

Seven Dial Warehouse Key Plan

New glazing and stall riser required to accommodate adjusted height of the glass in this location and fixed to new steel beam in accordance with structural engineers specification

Proposed flat roof to be constructed with Icopal Universal bitumen single layer membrane system or similar approved.

Single-ply membrane to be fitted with 150mm upstand lap above finished flat roof level, glued with Icopal Single-ply spray adhesive and mechanically fixed around the perimeter of the roof according to manufacturer's guidelines (by Icopal or similar approved)

120mm Celotex Crown Bond insulation board fully bonded on Vapour Control Layer (to BS6229:2003) on 18mm plywood decking on firing pieces laid to falls of 1:60 over timber joists. 150mm cavity between joists.

Joists to structural engineers specification. System to achieve U-value of 0.17 W/m²K

Existing beam as specified by structural engineer

Proposed stair nosings to be installed from second floor half-landing to fifth floor. Stair nosing to Gradus DDA4 PVC-U Channel with PVC Xtra-grip Insert. Channel colour Black (LRV 4.99). Insert Glacier Interior (LRV 42.09).

Proposed steel balustrade with mesh infill panels to form handrail. See balustrade details 527-AS.14

Existing window to be retained with restrictors added to limit opening tilt on window

Timber post as specified by structural engineer concealed with timber partition wall

All existing walls to be thoroughly cleaned and repaired where necessary before painting throughout with undercoat and painted with Dulux Trade Vinyl Silk, colour: Traffic White (RAL 9016)

Existing steel beam to be retained

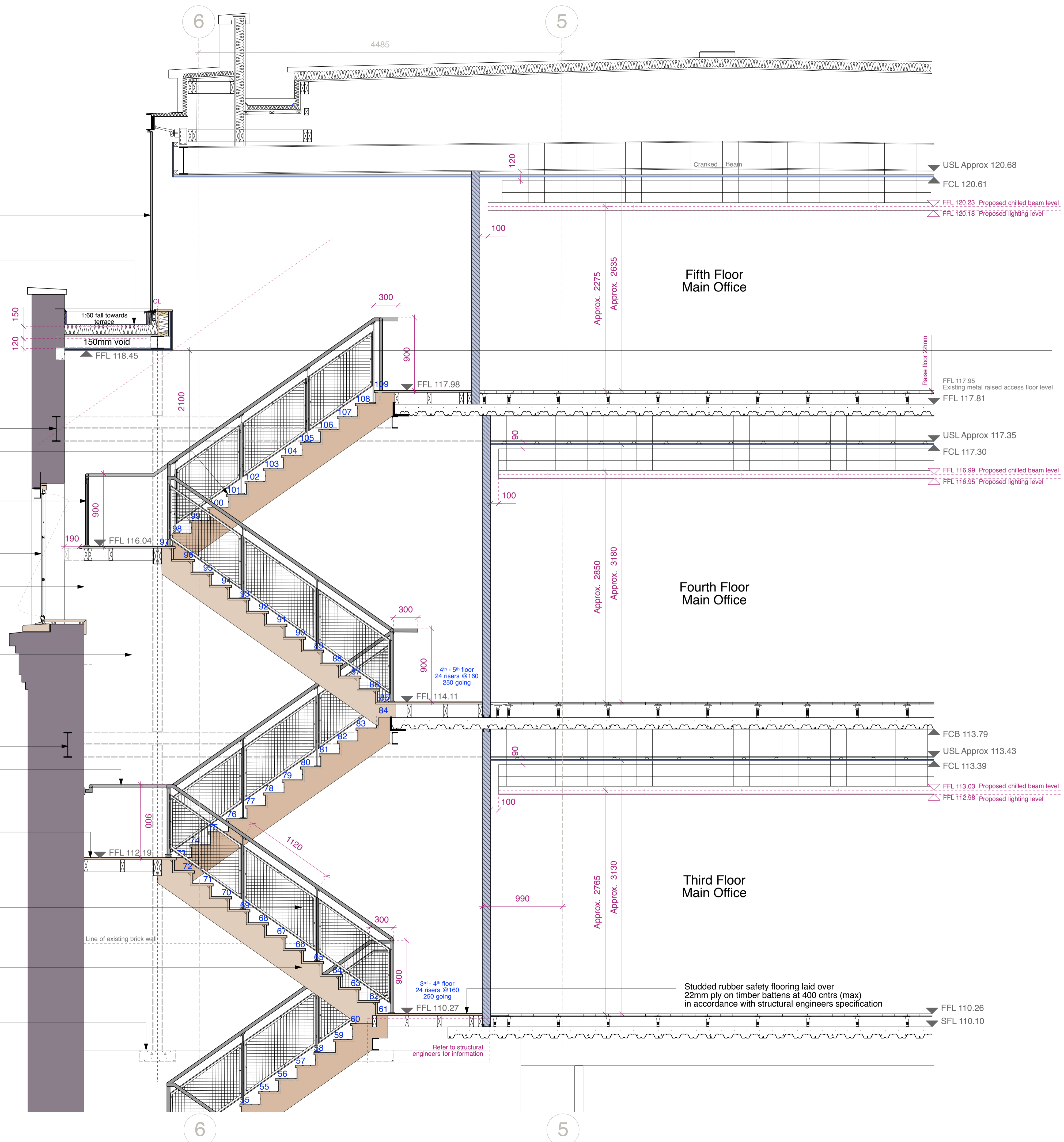
Steel handrail to be fixed to stair as part of Contractor Design Portion (CDP) from second floor half-landing to fifth floor and to be painted in colour: Ref: Dulux 50GY 07/036 (Dark Grey). See balustrade details 527-AS.14

SaarFloor Noppe stud rubber safety flooring in colour: Anthracite 102 to replace all existing stair covering from the ground to fifth floor from Polyflor or similar approved

Proposed steel balustrade with mesh infill panels to form handrails. See balustrade details 527-AS.14

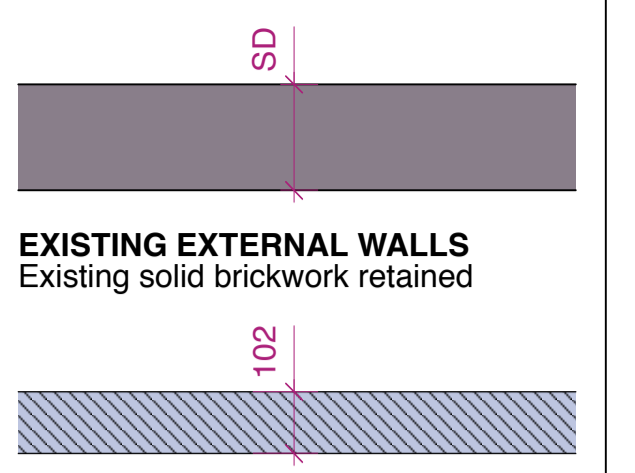
Proposed new timber stair stringers to match existing from second floor half-landing to fifth floor and to form part of the Contractors Design Portion (CDP)

New padstones to take structural steel work in accordance with structural engineers specification



PLANNING

PROPOSED SECONDARY STAIR SECTION CC



Where partition wall is enclosing supporting steel, set double stud either side of steel. Total build up to increase subject to steel size by structural engineer.

rev	date	notes



CLIENT **PEC NEAL LTD, C/O CBRE GI**

PROJECT **SEVEN DIALS WAREHOUSE LONDON WC2**

TITLE **PROPOSED STAIR SECONDARY SECTION CC**

DWG NO **527-AS.28** REV

DRAWN BY **SF** SCALE

CHECKED BY **DS** DATE **Oct 2016**

T: 020 7549 2133 Unit 1
F: 020 7549 2144 9a Dallington Street
E: info@gpadlondonltd.com Clerkenwell
W: www.gpadlondonltd.com London EC1V 0BQ

This drawing is the copyright of gpad london ltd. Not to be reproduced, altered or disclosed to any unauthorized person without the prior written permission of gpad london ltd. Do not scale the drawing. All indicated dimensions to be checked and verified on site by the contractor before commencement of any fabrication drawings or work whatsoever on site. Report any discrepancies to the Architect immediately. Drawings to be read in conjunction with relevant drawings and specifications.

FILE NAME PRINT SIZE **A1**