

KEY PLAN

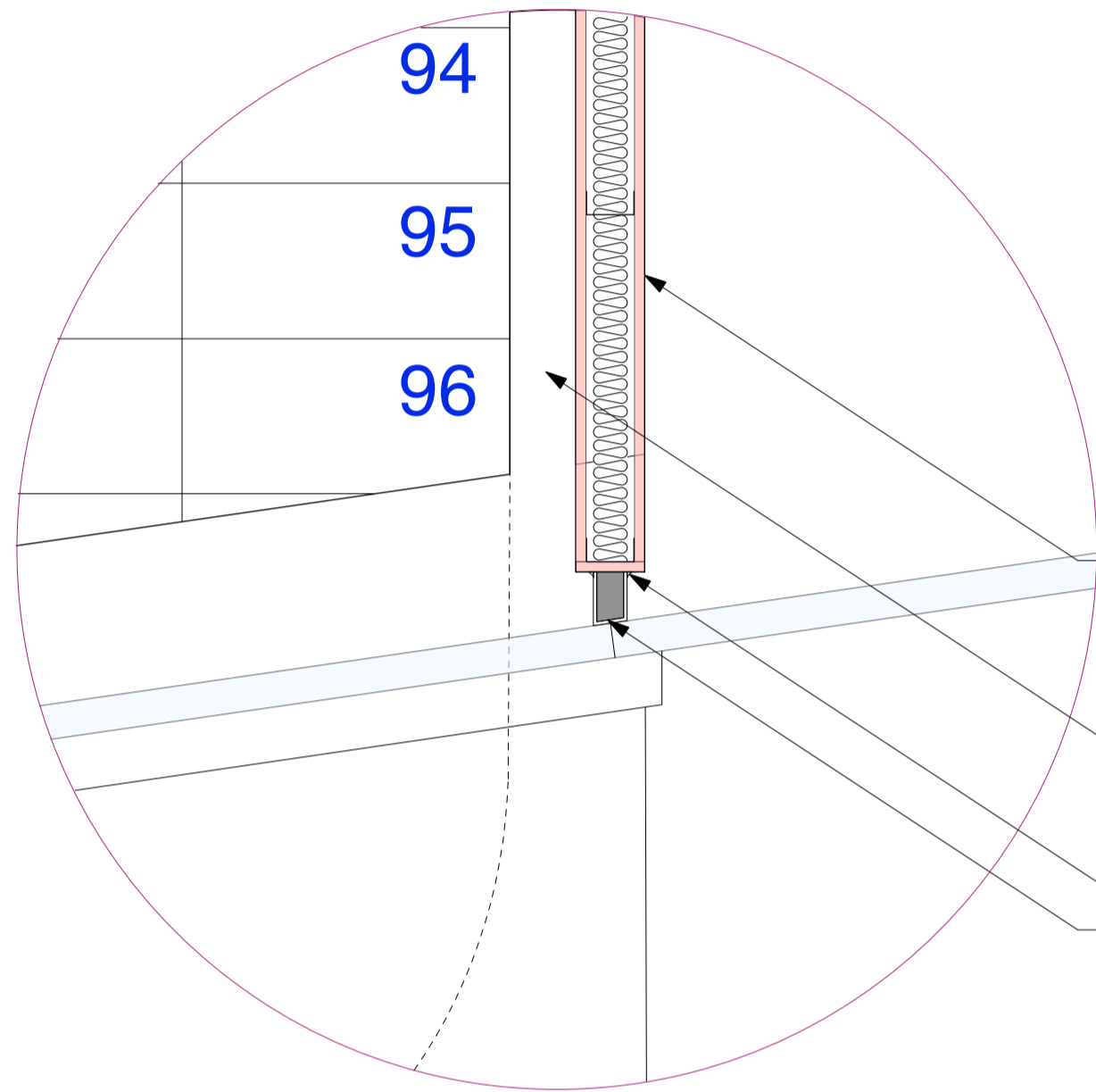
Proposed flat roof to be constructed with 'Icopal' or similar universal bitumen single layer membrane system to be approved by architect. 15 year Insurance backed warranty minimum requirement.

Single-ply membrane to be fitted with 150mm upstand lap above finished flat roof level, glued with Icopal single-ply spray adhesive and mechanically fixed around the perimeter of the roof according to manufacturer's guidelines (by Icopal or similar approved)

120mm Celotex Crown Bond insulation board fully bonded on Vapour Control Layer (to BS6229:2003) on 18mm plywood decking on furring pieces laid to falls of 1:60 over timber joists. 150mm cavity between joists.

16mm Gyprock RB2 16mm resilient bars fixed to u/s of joists at 450 c/c and at perimeter 2 x 15mm Fireline plasterboard.

Joists to structural engineers specification. System to achieve U-value of 0.17 W/m²K

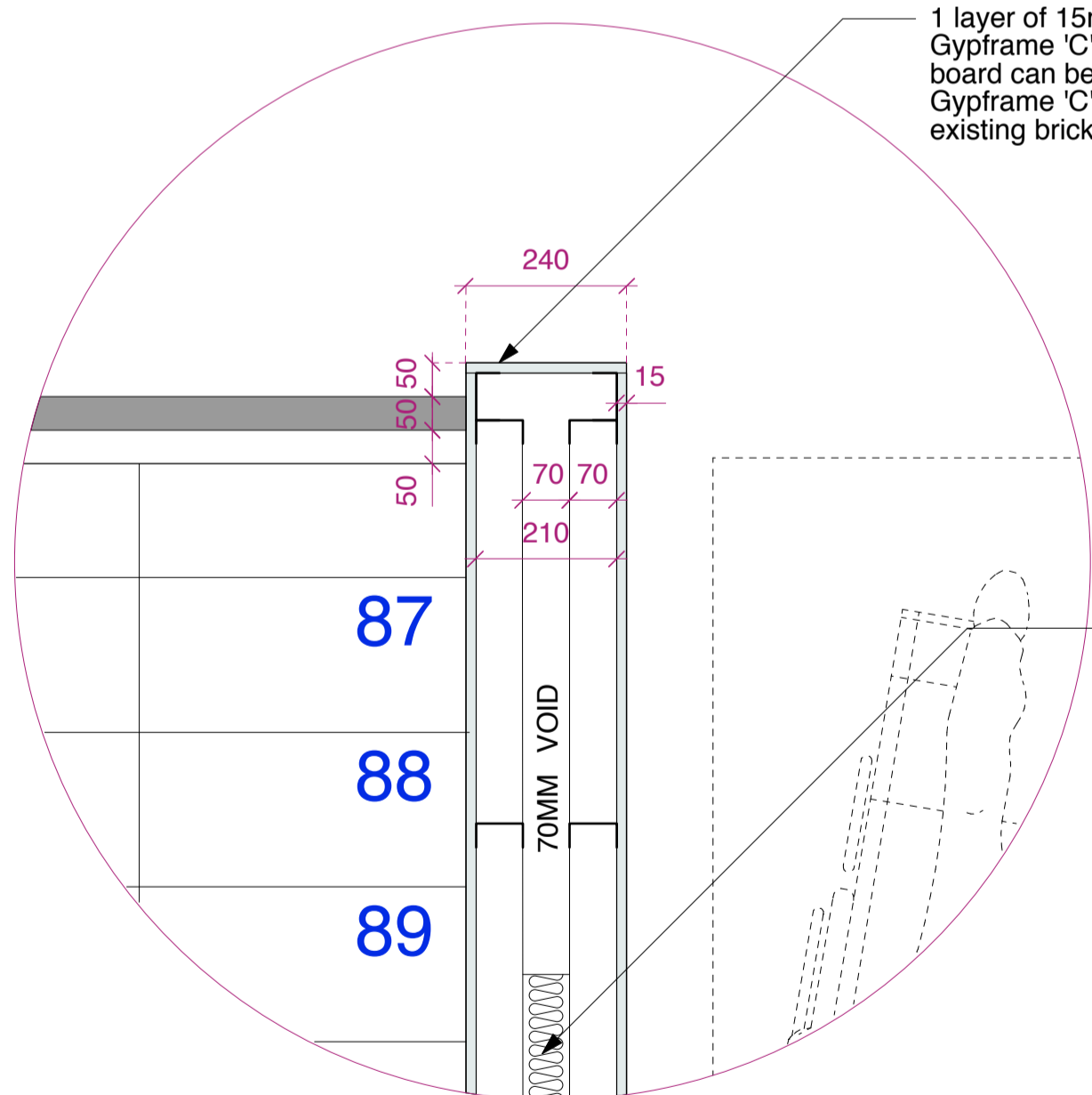


PARTITION WALL 1
1 Layer 15mm British Gypsum Fireline to either side of 70mm Gypframe 'C' Studs @ 600mm c/s 50mm Isowool APR 1200 in the cavity. Finish to aymes jointing system

Partition wall width visible below from ground up to Fifth floor FFL

Bead of white silicone sealant
Emseal QuietJoint partition closure. SHG three-sided silicone Mass-loaded acoustic seal (STC-53, OITC-38, ASTM E-90) with fire-resistant (Smoke and Flame Spread Class A, ASTM E-84-12).

DETAIL 1 Scale 1 : 10



1 layer of 15mm Fireline board fixed to either face of 70mm Gypframe 'C' studs @ 600mm c/s to form protected stair. (Knauf board can be used where stair partition does not form office wall). Gypframe 'C' studs separated with 70mm void and fixed to top of existing brick wall at the third floor and extended to the fifth floor.

50mm Isowool APR 1200 in the cavity for acoustic insulation to provide 44RwdB sound resistance.

New stair nosings to be installed from second floor half-landing to fifth floor. Stair nosing to Gradus DDA4 PVC-U Channel with PVC Xtra-grip Insert. Channel colour Black (LRV 4.99). Insert Glacier Interior (LRV 42.09).

New supporting steel columns to be installed within the partition wall in accordance with structural engineer's specification.

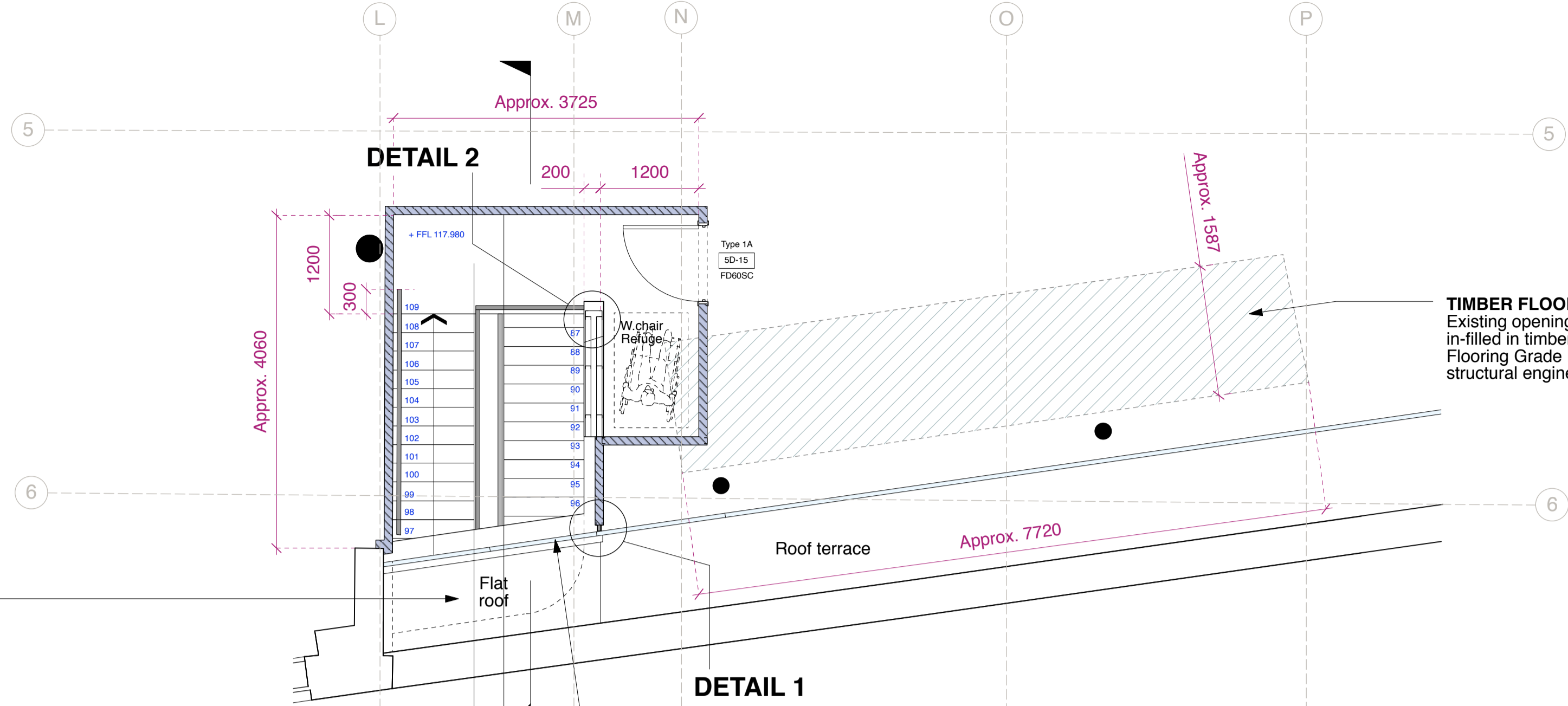
New timber stair to be installed from half-landing. Existing timber balustrade and handrails to be terminated at the half landing and replaced with new

DETAIL 2 Scale 1 : 10

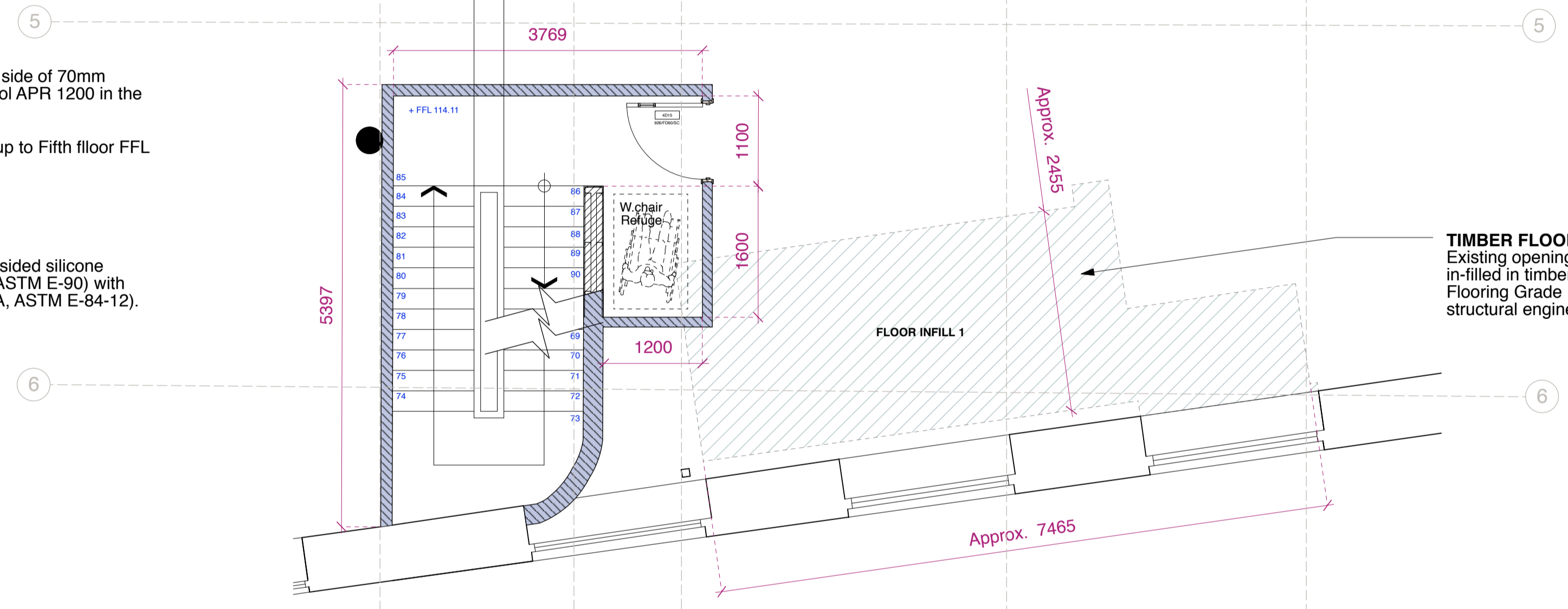
PLANNING

PROPOSED SECONDARY ESCAPE STAIR PLANS

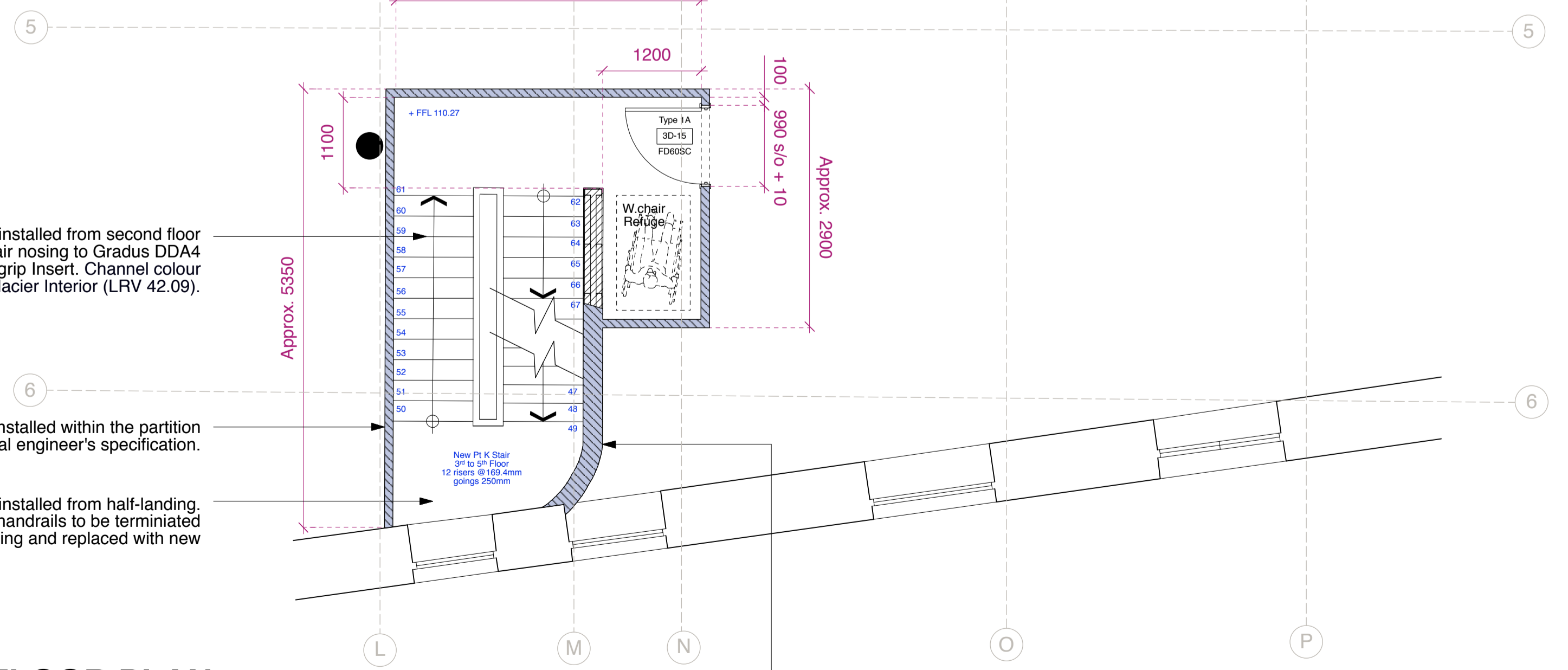
FIFTH FLOOR PLAN



FOURTH FLOOR PLAN



THIRD FLOOR PLAN



Existing brick wall to be retained. Remove timber top and prepare to take new stair enclosure in accordance with structural engineer's specifications. Stairwell to be enclosed with a lightweight 60min fire rated stud and plasterboard partition up to 5th floor

GENERAL NOTES

GRID SHOWN INDICATIVE. SCALED FROM ADAMS KARA TAYLOR AS BUILT DRAWINGS

DRAWING TO BE READ IN CONJUNCTION WITH STRUCTURAL ENGINEER'S DETAILS AND SPECIFICATIONS. FOR CONSTRUCTION INFORMATION TO BE BASED ON DRAWING NO. GA1863/31

ALL NEW STEEL TO BE FINISHED IN INTUMESCENT PAINT TO ACHIEVE 60MIN FIRE RATING

NEW TIMBER STAIR BY SPECIALIST. DESIGN TO FORM PART OF CDP AND IS SUBJECT TO INTRUSIVE INVESTIGATION FOLLOWING THE STRIP-OUT WORKS TO VERIFY CONSTRUCTION AND CONNECTION DETAILS.

LEGEND

TIMBER FLOOR INFILL
Existing opening in composite floor slab to be in-filled in timber joists and finished with 22mm Flooring Grade Plywood in accordance with structural engineer's specifications.

PARTITION WALL 1
1 layer of 15mm FireLine board fixed to either face of 70mm Gypframe 'C' studs @ 600mm c/s 50mm Isowool APR 1200 in the cavity. Finish to aymes jointing system
3600mm maximum partition height
60 minute fire resistance
44RwdB sound resistance
British Gypsum system ref: A206110

CURVED COMPARTMENT WALL
Gypframe 72 EDCL80 Curveliner fixed top and bottom at 300mm centres with 70mm Gypframe 'C' Studs fitted within channel sections.
Two layers of 12.5mm V-cut board fixed to each side of curved frame to form partition with 50mm Isowool APR 1200 insulation in the cavity.
60 minute fire resistance
43RwdB sound resistance

Where partition wall is enclosing supporting steel, set double stud either side of steel. Total build up to increase subject to steel size by structural engineer.

rev	date	notes

gpod architecture & interior design

CLIENT PEC NEAL LTD, C/O CBRE GI

PROJECT SEVEN DIALS WAREHOUSE LONDON WC2

TITLE PROPOSED ESCAPE STAIR FLOOR PLANS

DWG NO 527-AS.27 REV

DRAWN BY SF SCALE 1:50@A1
CHECKED BY DS DATE Oct 2016

T: 020 7549 2133 Unit 1
F: 020 7549 2144 9a Dallington Street
E: info@gpodlondonltd.com Clerkenwell
W: www.gpodlondonltd.com London EC1V 0BQ

This drawing is the copyright of gpod london ltd. Not to be reproduced, altered or disclosed to any unauthorised person either wholly or in part without written permission. Do not scale off this drawing. All indicated dimensions to be checked and verified on site by the contractor before commencement of any fabrication drawings or work whatsoever. On site report any discrepancies to the Architect immediately.
Drawings to be read in conjunction with relevant drawings and specifications.

FILE NAME PRINT SIZE A1