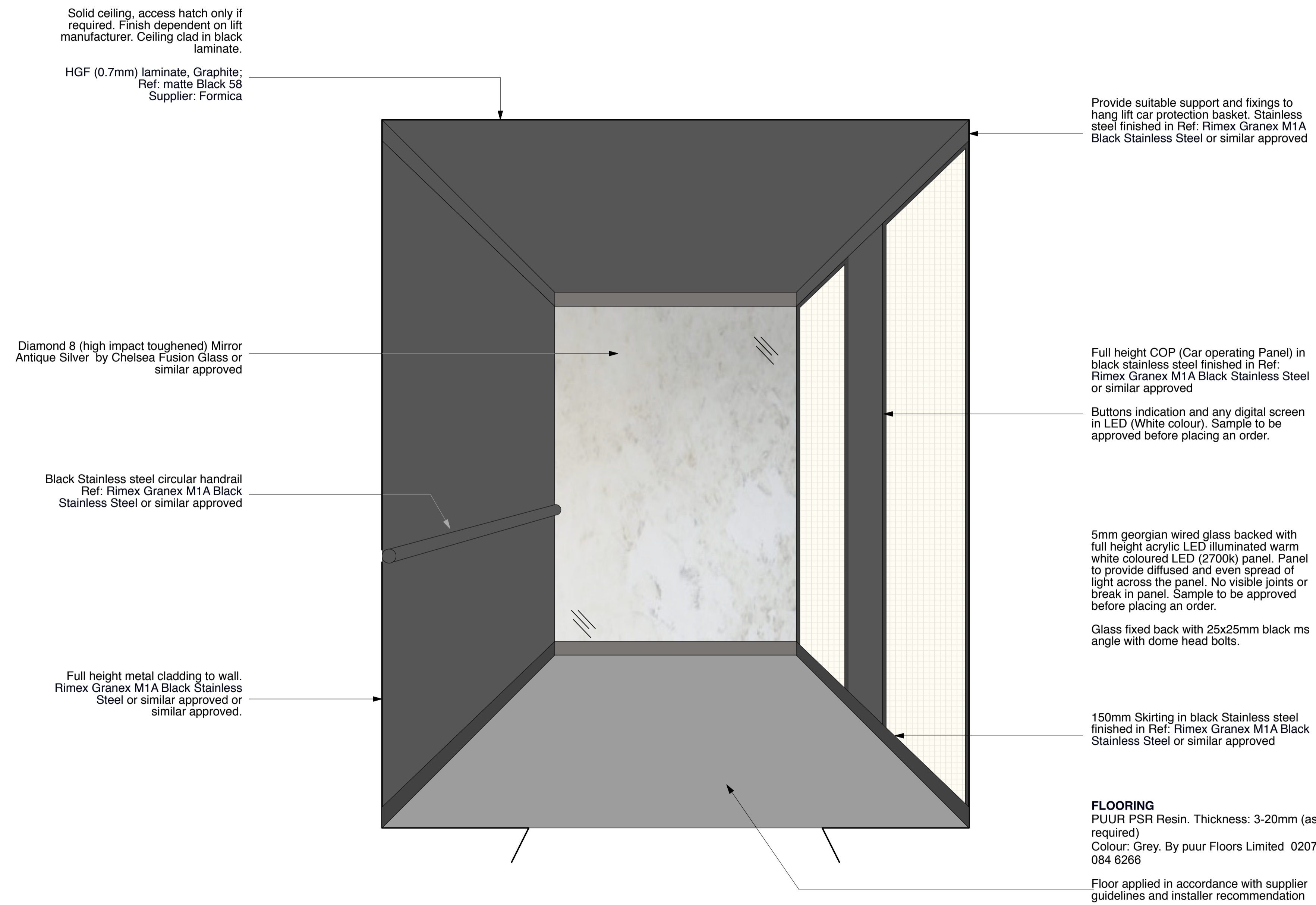
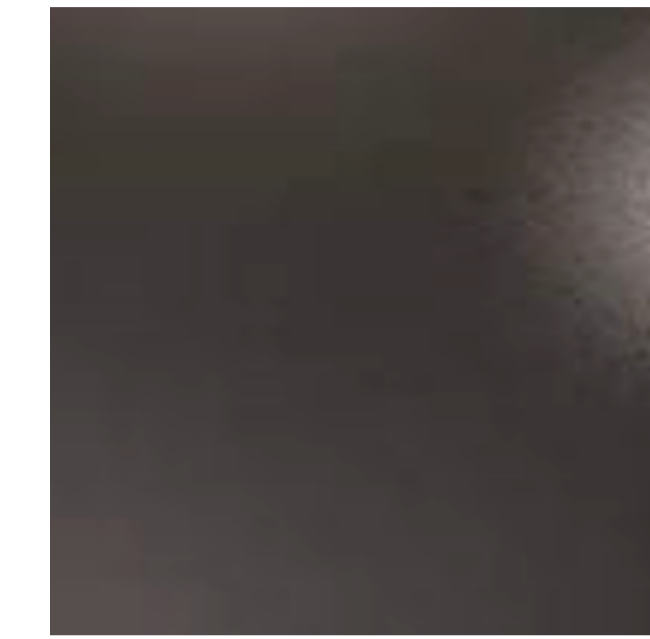


Dimensions of panels to suit internal car dims all by specialist contractor. Site survey, and fabrication drawings as part of CDP.



CAR INTERIOR SKETCH

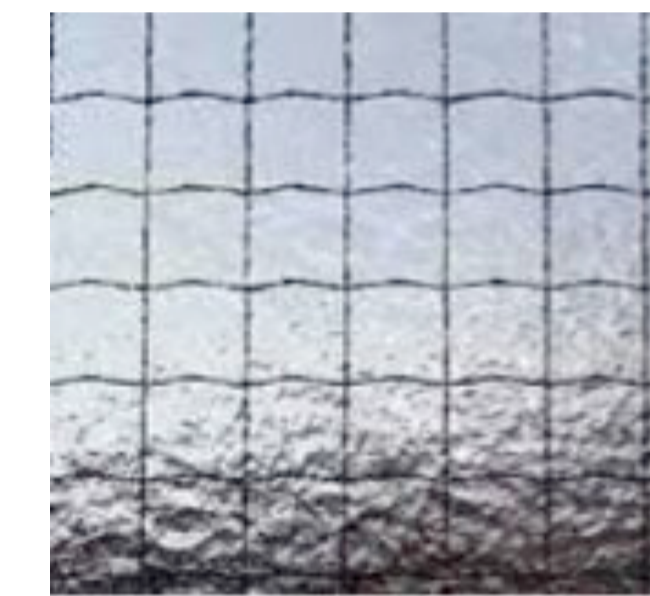
FINISHES



BLACK STAINLESS STEEL
Ref: Granex M1A Black Stainless Steel By Rimex



SILVER ANTIQUE MIRROR
Ref: Diamond 8 Mirror Antique Silver by Chelsea Fusion Glass



GEORGIAN WIRED GLASS
by Saint Gobain



RESIN FLOOR
PUUR PSR Resin. Thickness: 3-20mm (as required)
Colour: Grey. By Puur




FULL HEIGHT COP
COP (Car operating Panel) in black stainless steel finished in Ref: Rimex Granex M1A Black Stainless Steel By Kone or similar approved

LIFT CAR INTERIOR DETAIL



PLANNING

© gpad london ltd.

PROJECT		SEVEN DIALS WAREHOUSE LONDON WC2			DRAWING TITLE		LIFT CAR INTERIOR DETAIL	
CLIENT		PEC NEALE LTD			 architecture & interior design		T: 020 7549 2133 F: 020 7549 2144 E: info@gpadlondonltd.com W: www.gpadlondonltd.com	
SCALE	NTS	DATE	Oct 16	DWG BY	LM	REV.	Unit 1 9a Dallington Street Clerkenwell London EC1V 0BQ	
CHKD.		DWG NO.	527-AS.25					