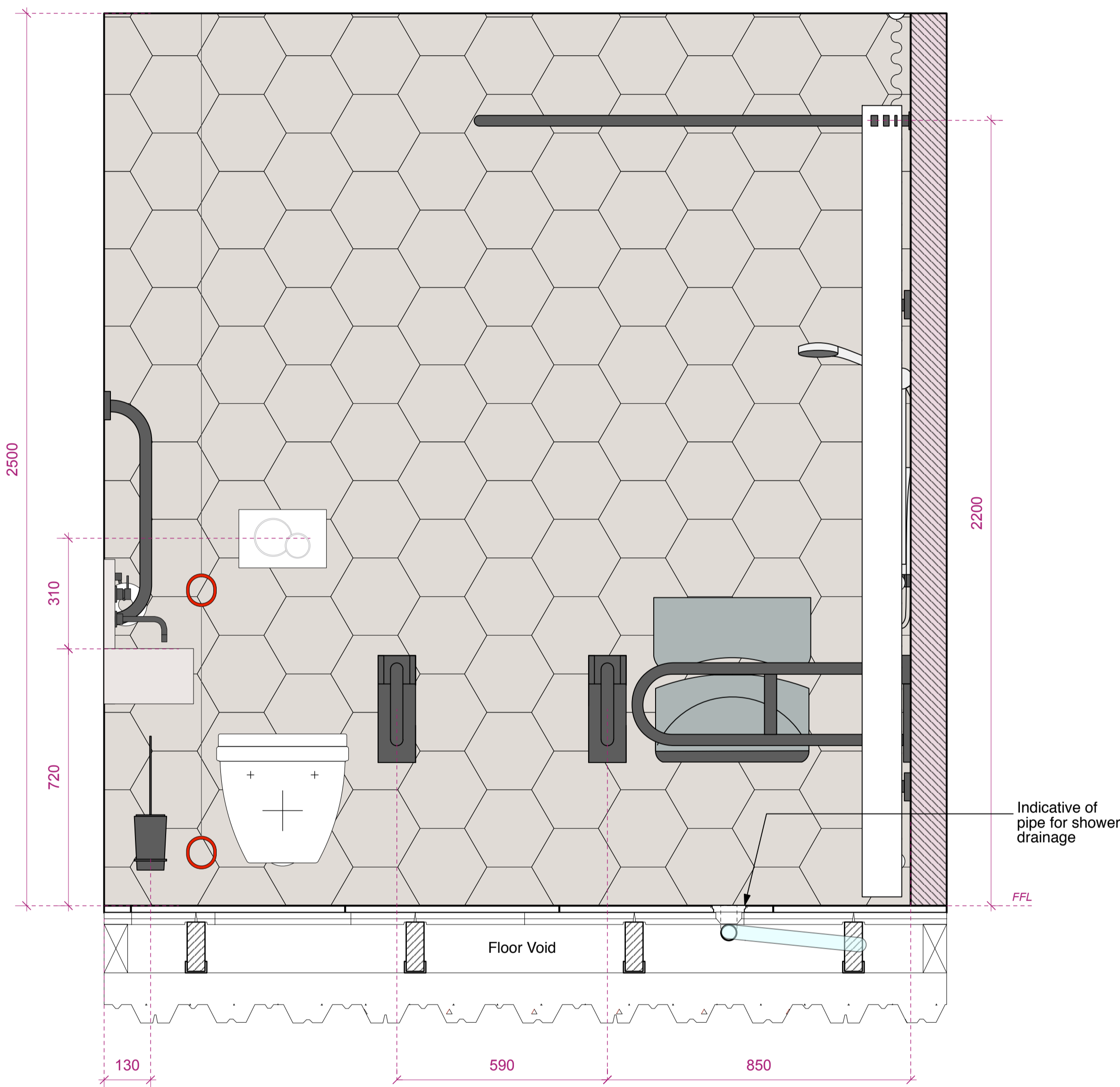


FLOOR PLAN

Wall construction:
18 mm marineply faced in
tile ref as indicated,
all on suitable framework.

Access hatch in wall in
accordance with M&E
engineer specifications.

Void and construction behind is unknown at this stage



SECTION AA

FIXTURES AND FITTINGS SPECIFICATIONS:

TOILET
-Toilet wall-mounted Ref: 2203090000, projection 700 mm, fixing ref: 006500.
Toilet seat and cover with lateral reinforcement and extended hinge shaft, hinges stainless steel, without automatic closure ref: 006241.
by Duravit +44 845 500 7787
-Mount toilet on concealed cistern system Ref: Geberit Duofix installation with Sigma01 Flush push plate, both by Geberit or similar to match.

WALL MOUNTED BASIN
Kern Mini concrete basin Ref: KM.A1
Dims: L350xW250xH405, wall thickness 30mm.
Kast S Wall mounting brackets Set of Two not included.
As supplied by Kast Concrete Basins +44 (0)56 0384 0595

WALL MOUNTED TAP
Ref: Elan Vital
Finish: Gun Metal
2 hole basin set with bespoke 150mm spout.
As supplied by Watermark 02077407340
-1" 1/4 Modern Basin Waste trap with 315mm wall extension & rosette
Ref: ANC05
-Soft touch basin waste & plated downpipe slotted
Ref: ANC03

WALL MOUNTED TAP MIRROR
Wall fixing recessed to wall, MDF back to tile

Type 1: Glued onto 18mm MDF board, cut away and concealed from the mirror edges. Fixed to wall using aluminium wall fixings Ref: GA WP2 by Gooding Aluminium.

ACCESSIBLE SHOWER PACK
Doc M Shower Room Pack
Supplier: Idealspec.co.uk
All finishes in Dark Matt Bronze (Lacquered) as supplied by Strada +44 (0)808 178 6007.
N.B. Shower Mixer not required, electric shower to be used. Spec below.

INDIVIDUAL ITEMS:
S6632(XK) - Shower seat, folding 650mm projection fixed height
S6635(XK) - Multi-System back support fixed height
S6750(01) - Multi-System shower curtain 1500x2000mm
S6751(AC) - Contour 21 angled shower curtain rail 1200 x 1200mm - Dark Matt Bronze finish by Strada.
S6454(AC) - Contour 21 grab rail straight 60cm long x 35mm diameter - Dark Matt Bronze finish by Strada.
S6452(AC) - Contour 21 grab rail straight 45cm long x 35mm diameter - Dark Matt Bronze finish by Strada.
S6360(AC) - Contour 21 hinged support rail 80 x 35mm diameter, Doc M Compliant - Dark Matt Bronze finish by Strada.

SAFEGUARD+ THERMOSTATIC SHOWER + GRAB + REMOTE
Thermostatic care shower, 8.5kW
Ref: CSGP08WGRBRSS Colour: Black
Supplier: Triton

STANDARD TOILET ACCESSORIES
1x Toilet paper holder, Ref: ELV80
3x Robe hook, Ref: ELV81
1x Wall mounted Toilet Brush, Ref: ANC63 By Watermark Dark Matt Bronze finish by Strada.
1x Dolphin S/S soap dispenser, wall mounted, Ref: BC 613 Dark Matt Bronze finish by Strada.
1x BC918 SSS Mini Paper Towel Dispenser by Dolphin, Dark Matt Bronze (Lacquered) finish as supplied by Strada +44 (0)808 178 6007.

All in Dark Matt Bronze (Lacquered) as supplied by Strada +44 (0)808 178 6007.

HARDWARE
Supply and install door stops behind door:
Door handle: Ref: SHOX051 Dark Matt Bronze by Strada.
Door kickplate: Ref: Granex M1A Black SS by Rimex dims 180mm H x 620mm Long
Towel rail:

HEATED TOWEL RAIL
Lineo Nero Black VH Electric Towel Rail (1100w x 350w), Black. Supplier: Geyser
In accordance with M&E specifications

SHOWER DRAIN
Drain Ref: KDBH50GV (97mm h)
Grate Ref: KDR10EOBD1S (Oil-rubbed bronze finish)
Supplier: Schluter / Danny Brant - 07712 300601

WALL FINISH

Wall to be tiled in 216x250x9-Hex mm Matt ceramic wall tiles.
Tile Range: Patchwork; Tile name: Mystica. Ref: 2TXT101
By Solus Ceramics +44 (0)121 753 0777. Waterproof grouts
Manhattan Ref: 110 by Mapei +44 121 508 6970.

FLOORING
Floor to be tiled in 216x250x9-Hex mm Matt ceramic tiles.
Tile Range: Patchwork; tile name: Arcane. Ref: 2TXT102.
By Solus Ceramics +44 (0)121 753 0777. Water proof
Grouts Anthracite Ref: 114 by Mapei +44 121 508 6970.

Apply Schlüter®-DITRA 25 to floor sub-strate using suitable bedding adhesive. (4-5mm). Supply and install formable edge trim in brushed stainless steel Ref: TTS 22 by CAT or similar approved.

NOTES:
Allow for timber battens where necessary inside the partition walls to support fixings.

TYPICAL ACCESSIBLE TOILET/SHOWER DETAILS

**TO BE READ IN CONJUNCTION
WITH MAIN CORE DRG: 527-AS.16**



PLANNING

PROJECT
**SEVEN DIALS WAREHOUSE
LONDON WC2**

CLIENT
PEC NEALE LTD

SCALE **1:10 @ A1** DATE **Oct 16** DWG BY **LM** REV.

CHKD. DWG NO. **527-AS.18**

© gpad london ltd.

DRAWING TITLE
**TYPICAL ACCESSIBLE TOILET/SHOWER
DETAILS**

gpad architecture & interior design

T: 020 7549 2133 Unit 1
F: 020 7549 2144 9a Dallington Street
E: info@gpadlondonltd.com Clerkenwell
W: www.gpadlondonltd.com London EC1V 0BQ