

FIXTURES AND FITTINGS SPECIFICATIONS:

TOILET
-Vero wall-mounted WC Ref: 221709 with soft-close seat and cover 006769 both colour 00, white. Vero fixing for wall mounted toilet Ref: 006500 by Duravit.
-Mount toilet on concealed cistern system Ref: Geberit Duofix installation with Sigma01 Flush push plate, both by Geberit or similar to match.

WALL MOUNTED BASIN:
-Custom Concrete Basin standard aggregate + steel fibres. 1 x offset internal basin, 1 x waste bin cut out (300 x 150mm)
Overall Dimensions - L1400 x W300 x H100mm
As supplied by Kast Concrete Basins.
-Wall mounting brackets
Laser cut on 10mm mild steel plates. Overall thickness of 20mm.
As supplied by Kast Concrete Basins

WALL MOUNTED TAP
Ref: Elan Vital
Finish: Gun Metal
3 hole basin set with bespoke 150mm spout.
As supplied by Watermark
-1" 1/4 Modern Basin Waste trap with 315mm wall extension&rosette
Ref: ANC05
-Soft touch basin waste&plated downpipe slotted
Ref: ANC03

PAPER DISPENSER:
BC918 Satin Stainless Steel Mini Paper Towel Dispenser by Dolphin, Dark Matt Bronze (Lacquered) finish as supplied by Strada +44 (0)808 178 6007.

MIRROR
Strap mirror wall mounted (700mmØ)
Strap colour: dusty rose
Ref: HAY-STRAP
By Hay Studio

STANDARD TOILET ACCESSORIES (1 SET PER CUBICLE)
1x Toilet paper holder, Ref: ELV80 By Watermark
1x Robe hook, Ref: ELV81 By Watermark
1x Wall mounted Toilet Brush, Ref: ANC63 By Watermark
1x Counter Mounted Soap Dispenser, 100 Spout
Ref: BC628SS-4 by Dolphin, Dark Matt Bronze (Lacquered) as supplied by Strada +44 (0)808 178 6007.

All in Dark Matt Bronze (Lacquered) as supplied by Strada +44 (0)808 178 6007.

HARDWARE
Supply and install Skirting/Floor door stops behind door;

Door handle: Ref: SHOX051 Dark Matt Bronze by Strada
Door kickplate: Ref: Granex M1A Black SS by Rimex
dims 180mm H x 620mm Long

SKIRTING
15x200mm Classic Ogee MDF skirting board
Ref: CLA15 Moisture resistant MDF As supplied by Skirtech

ACCESS HATCH
300x300 mm tiled access panel. TilePan by The Access Panel Company Ltd 01724853090

WALL FINISH
PF-P Dulux 50RB 66/066 (pink)
PF-G Dulux 30RR 72/008 (light grey)

Wall to be tiled in 216x250x9-Hex mm Matt ceramic wall tiles.
Tile Range: Patchwork; tile name: Arcane. Ref: 2TXT102.
By Solus Ceramics +44 (0)121 753 0777. Grouts Anthracite
Ref: 114 by Mapei +44 121 508 6970.

High pressured laminate 18mm MR MDF panels, lipped in 2mm laminate Ref: F7837 Graphite, matt finish, By Formica.

FLOORING
Floor to be tiled in 216x250x9-Hex mm Matt ceramic tiles.
Tile Range: Patchwork; Tile name: Mystica. Ref: 2TXT101
By Solus Ceramics +44 (0)121 753 0777. Grouts Manhattan
Ref: 110 by Mapei +44 121 508 6970.

NOTES:
Allow for timber battens where necessary inside the partition walls to support fixings.

RCP LEGEND:

PIR Wall flush mounted 360° movement sensor PIR light controls in White finish Ref: SLM360 by National Lighting. 'On' time adjusted to Max (18min)

EM 350mA IP65 Fixed 8.5W Dimmable LED Downlight, Ref: AU-DLED161 with white bezel. Connect to 3h maintained LED Emergency pack where indicated (EM) by Aurora Lighting

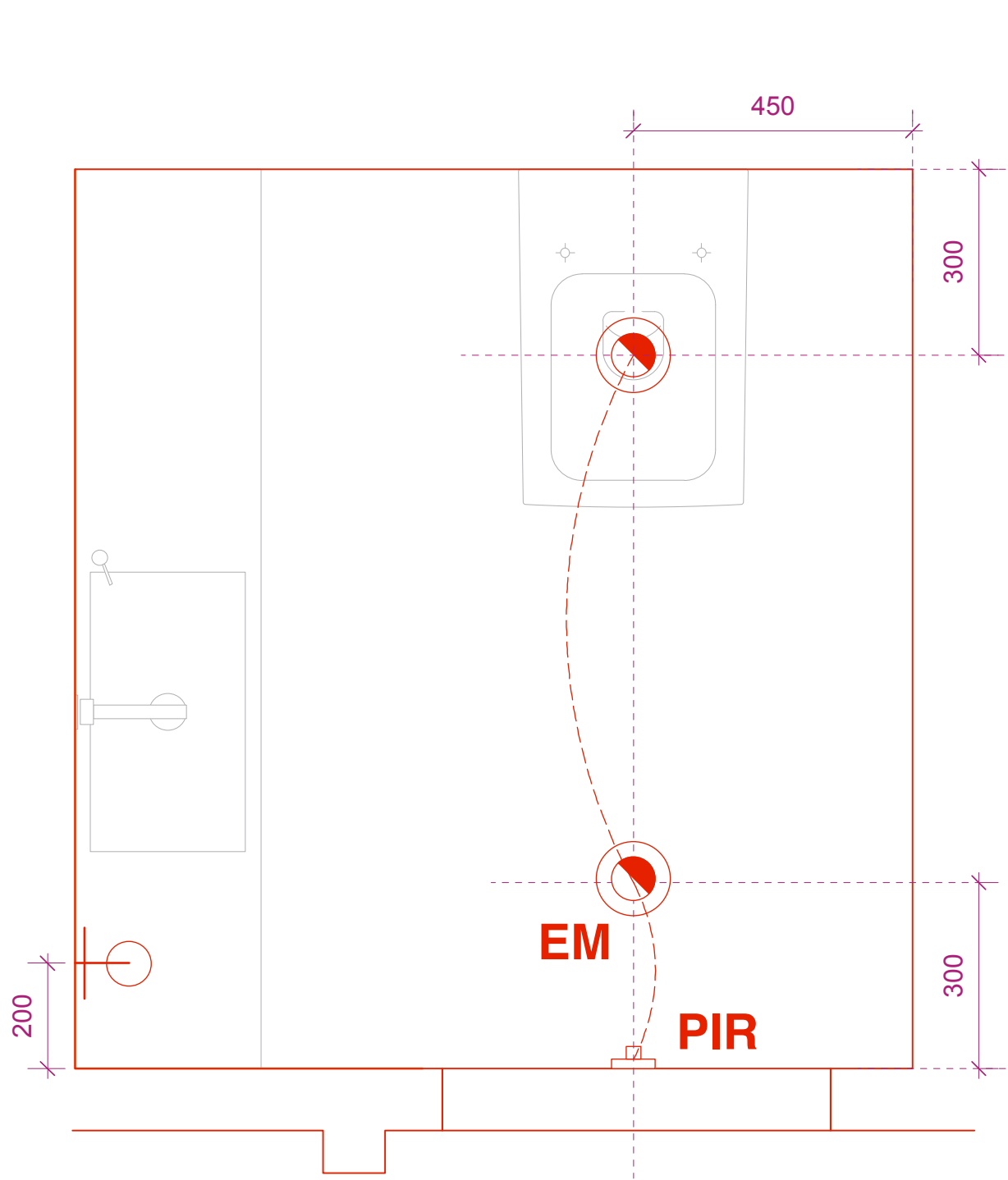
Sauna wall light
As supplied by SCP



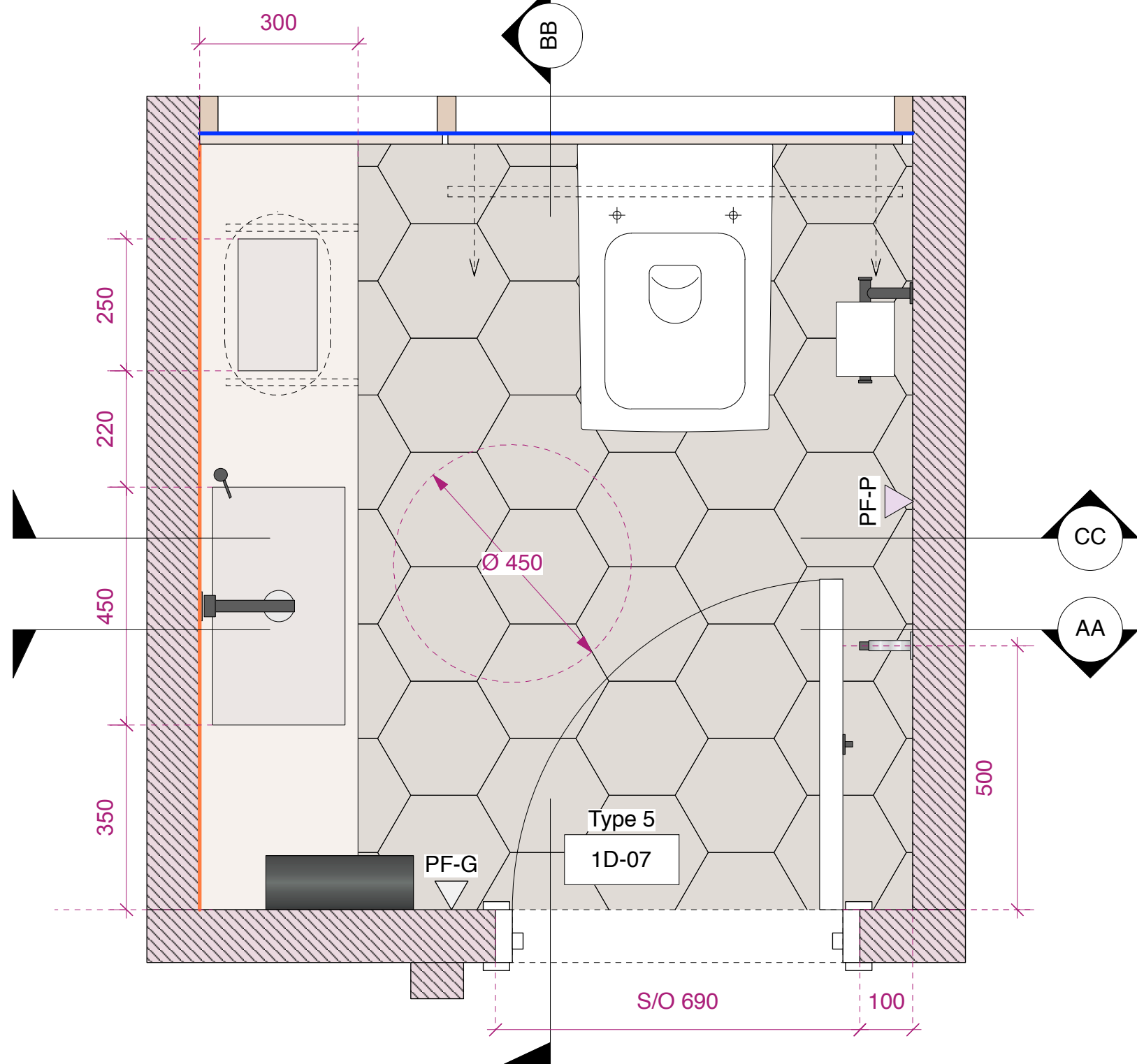
3D VISUAL



3D VISUAL



CEILING PLAN



FLOOR PLAN

TYPICAL TOILET CUBICLE DETAILS



TO BE READ IN CONJUNCTION WITH MAIN CORE DRG: 527-AS.16

PLANNING

			PROJECT SEVEN DIALS WAREHOUSE LONDON WC2				DRAWING TITLE TYPICAL TOILET CUBICLE FLOOR / REFLECTED CEILING PLANS DRAWINGS			
			CLIENT PEC NEALE LTD				<div>gpad</div> <div>architecture & interior design</div> <div>T: 020 7549 2133 F: 020 7549 2144 E: info@gpadlondonltd.com W: www.gpadlondonltd.com</div> <div>Unit 1 9a Dallington Street Clerkenwell London EC1V 0BQ</div>			
			SCALE 1:10 @ A1							
			DATE Oct 16							
			DWG BY LM				P1			
			REV.							
			CHKD.							
			DWG NO. 527-AS.17							
			© gpad london ltd.							

The drawing is the copyright of **gpad london ltd**. Not to be reproduced, retained or disclosed to any unauthorised person either wholly or in part without written permission. Do not scale off this drawing. All indicated dimensions to be checked and verified on site by the contractor before commencement of any fabrication drawings or work whatsoever on site. Report any discrepancies to the Architect immediately.

Drawings to be read in conjunction with relevant drawings and specification.