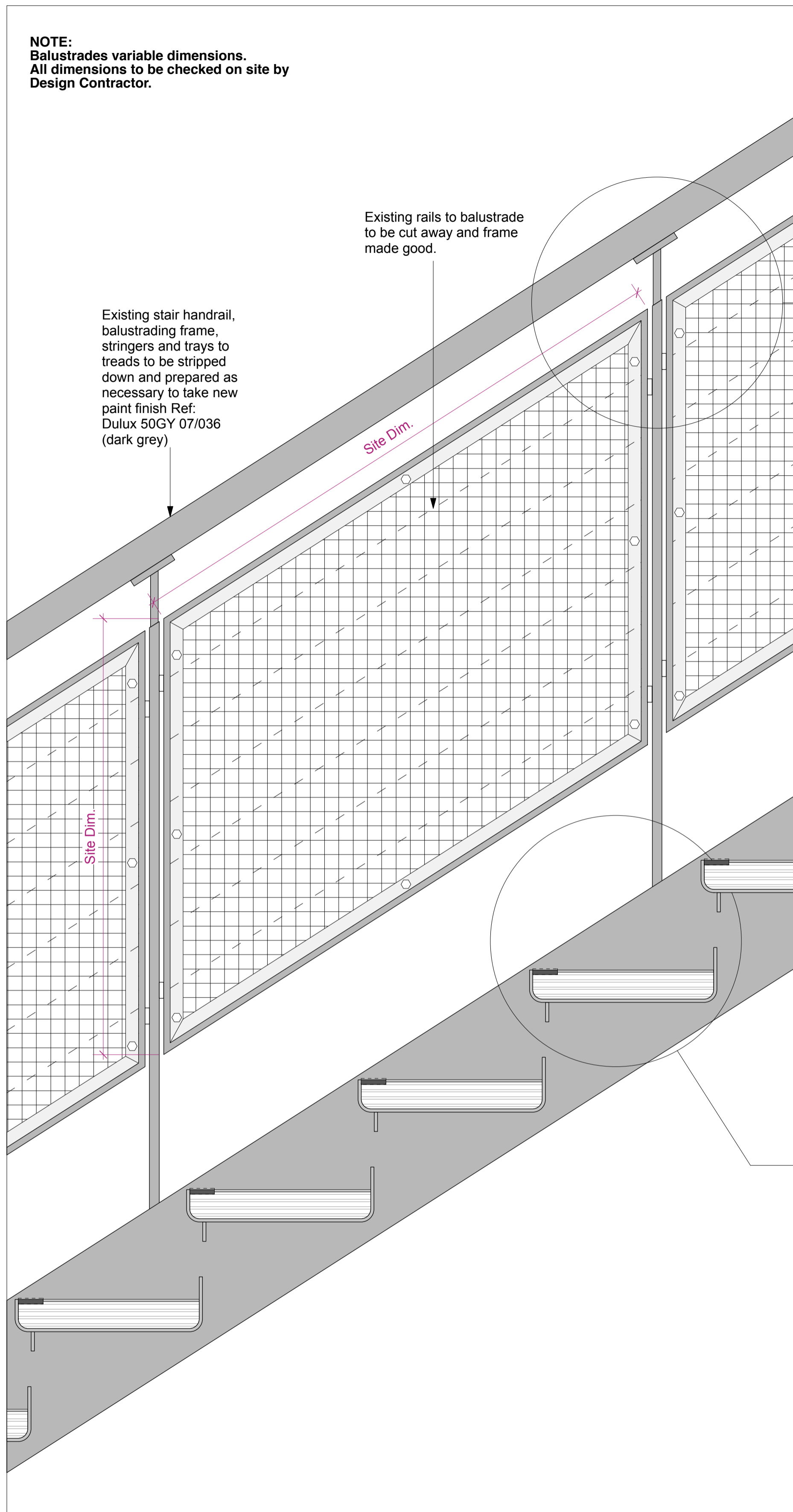
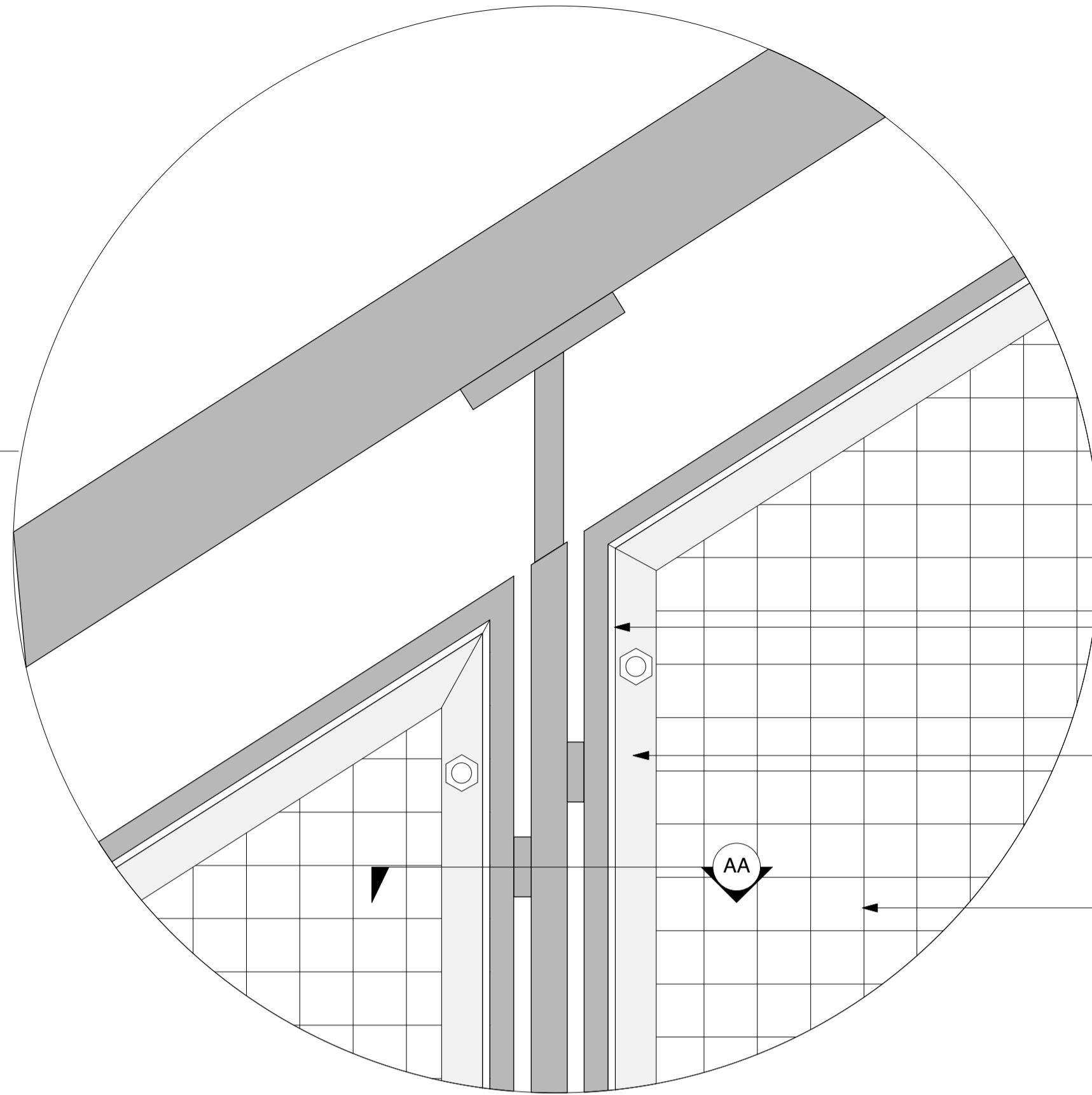


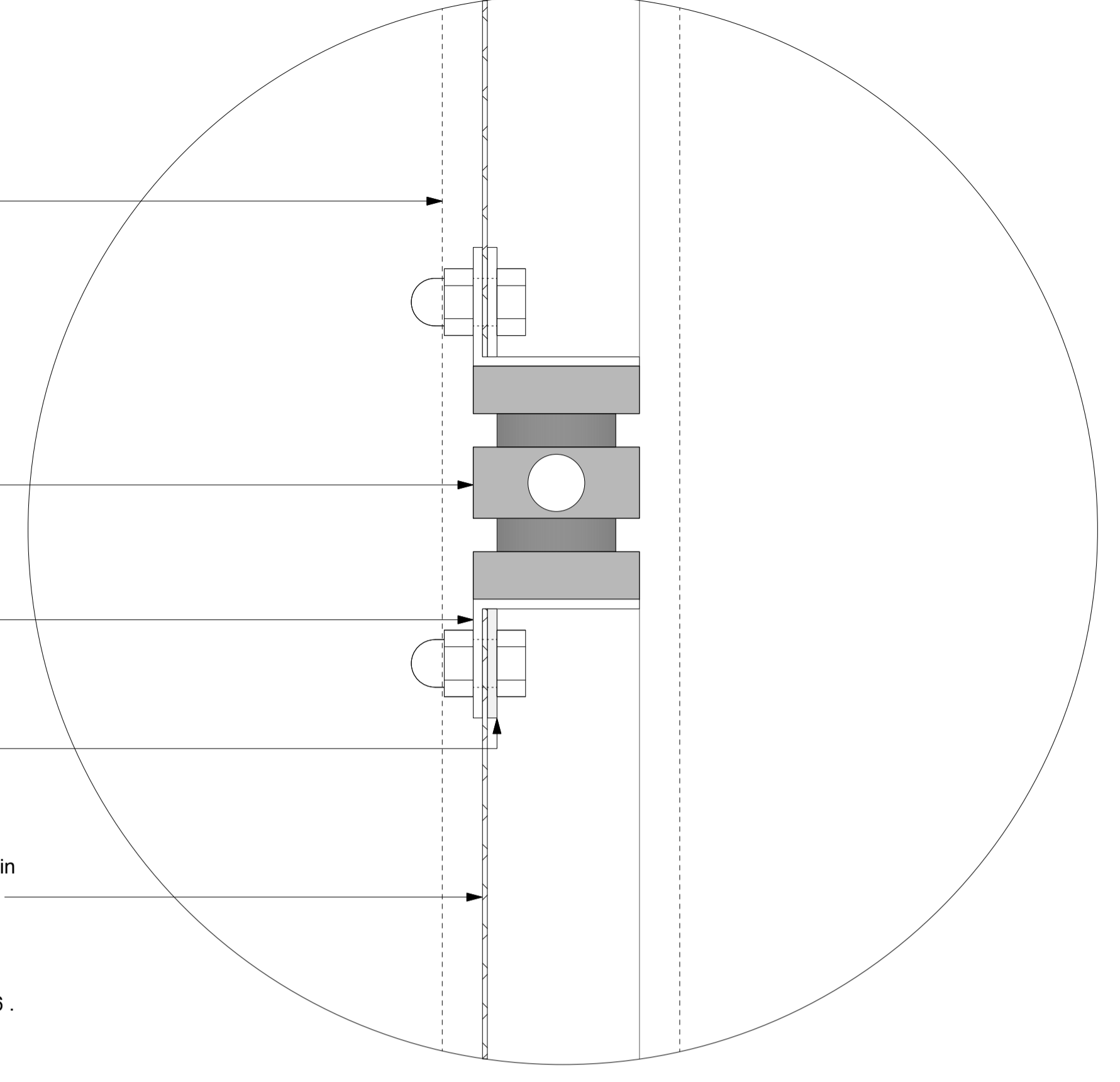
NOTE:
Balustrades variable dimensions.
All dimensions to be checked on site by
Design Contractor.



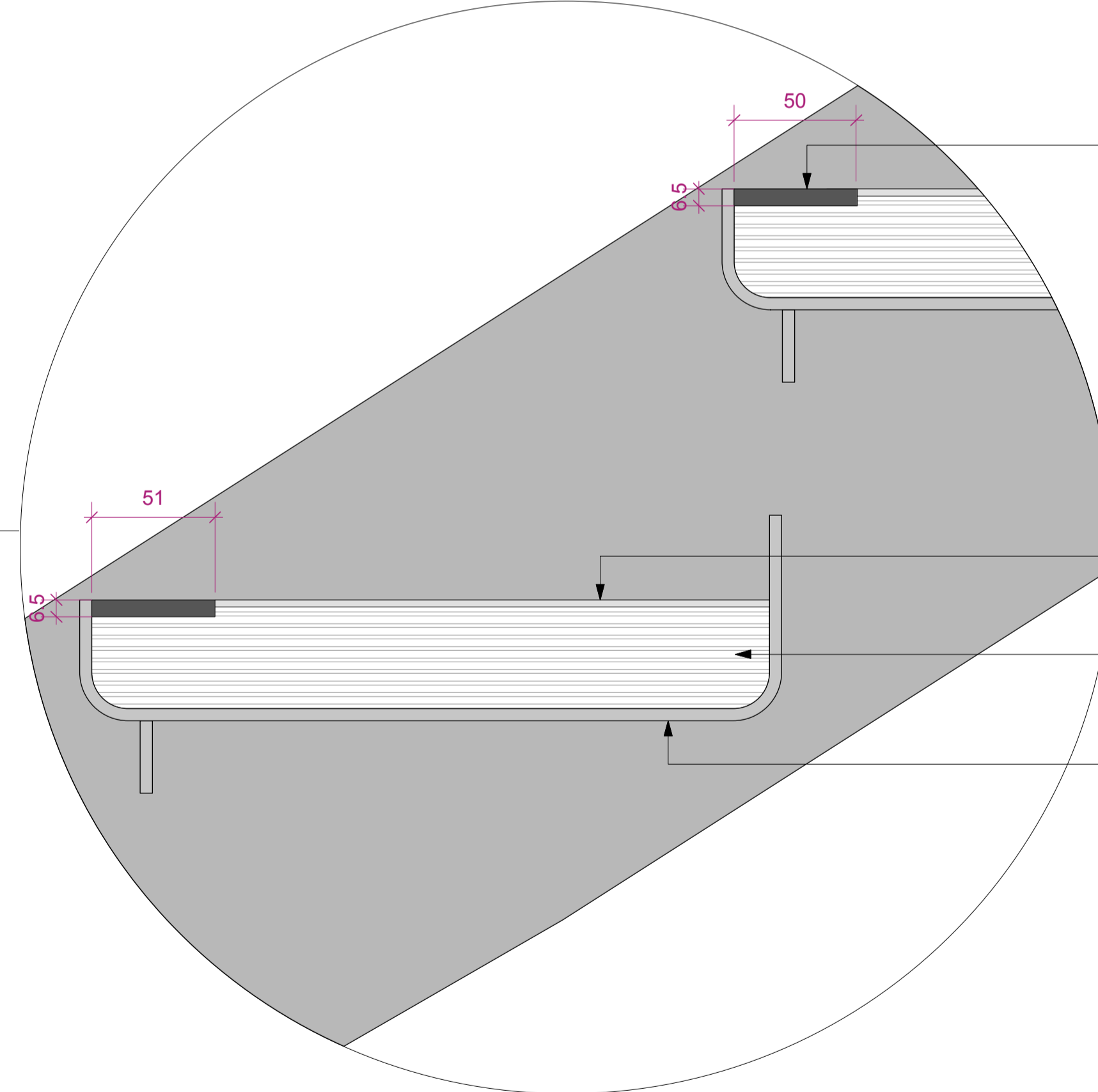
TYPICAL BALUSTRADE PANEL ELEVATION
1:5 @ A1



TYPICAL BALUSTRADE DETAIL
1:2 @ A1



TYPICAL MESH FIXING DETAIL AA
1:1 @ A1



TYPICAL TREAD DETAIL
1:2 A1



3D VIEW

- Line of handrail over.
- Existing balustrade frames retained and refinished.
- 35x25x3mm steel angle fixed to frame through existing bolts. Powder coated RAL 7016.
- 25x3mm steel strap. Powder coated RAL 7016.
- Balustrade panel formed in woven mesh secured between steel angle and flat strap with domehead nut and bolt. Ref: Hydra stainless, Powder coated RAL 7016. As supplied by Cadish MDA. (0)20 8492 7622 Or similar approved.

- Inlaid stair edging Stairtile - Slip - Resistant Flooring. To be fixed according to manufacturers recommendations typically with epoxy adhesive and screws. Ref: OT51F. As supplied by Gradus 01625 428922

- Tread to take resin floor Ref: PUUR PSR Resin, Colour: Grey. By puur Floors Limited 0207 084 6266
- Substrate to flooring contractor guidelines.
- Existing tray to be stripped down and prepared as necessary to take new paint finish Ref: Dulux 50GY 07/036 (dark grey)

TYPICAL STAIR AND BALUSTRADE DETAILS



TO BE READ IN CONJUNCTION WITH MAIN STAIRCASE DRG: 527-AS.13

PRELIMINARY

PROJECT SEVEN DIALS WAREHOUSE LONDON WC2			DRAWING TITLE TYPICAL STAIR AND BALUSTRADE DETAIL		
CLIENT PEC NEALE LTD					
SCALE 1:2 @ A1	DATE OCT 16	DWG BY LM	T: 020 7549 2133 F: 020 7549 2144 E: info@gpadlondonltd.com W: www.gpadlondonltd.com		
CHOD. DS	DWG NO. 527-AS.14	Unit 1 9a Dollington Street Clerkenwell London EC1V 0BQ			
This drawing is the copyright of gpod london ltd . Not to be reproduced, retained or disclosed to any unauthorised person either whole or in part without written permission. Do not scale off this drawing. All indicated dimensions to be checked and verified on site by the contractor before commencement of any fabrication drawings or work whatsoever on site. Report any discrepancies to the Architect immediately. Drawings to be read in conjunction with relevant drawings and specification. © gpod London Ltd.					