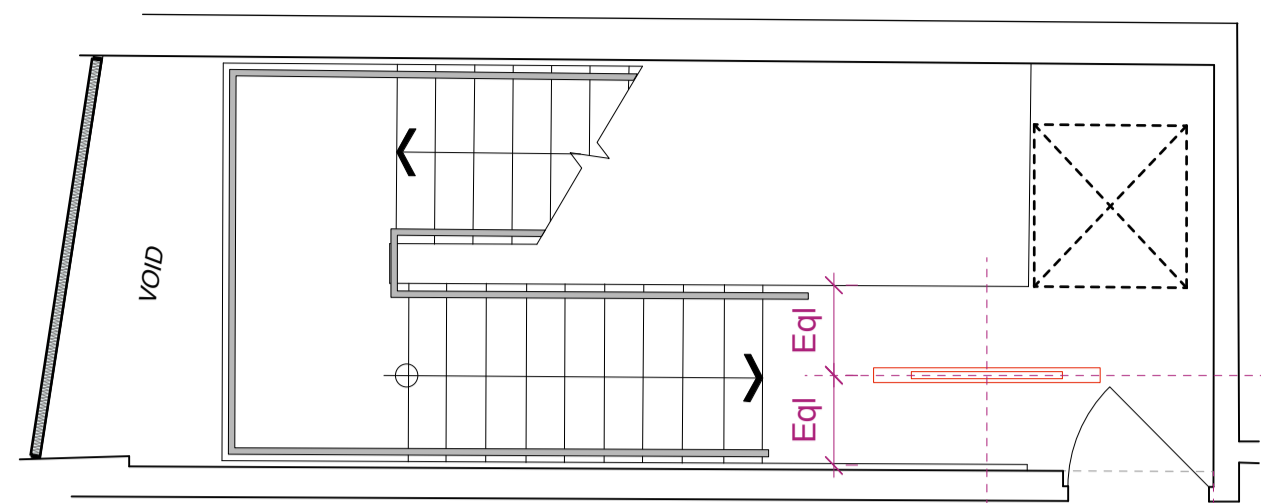
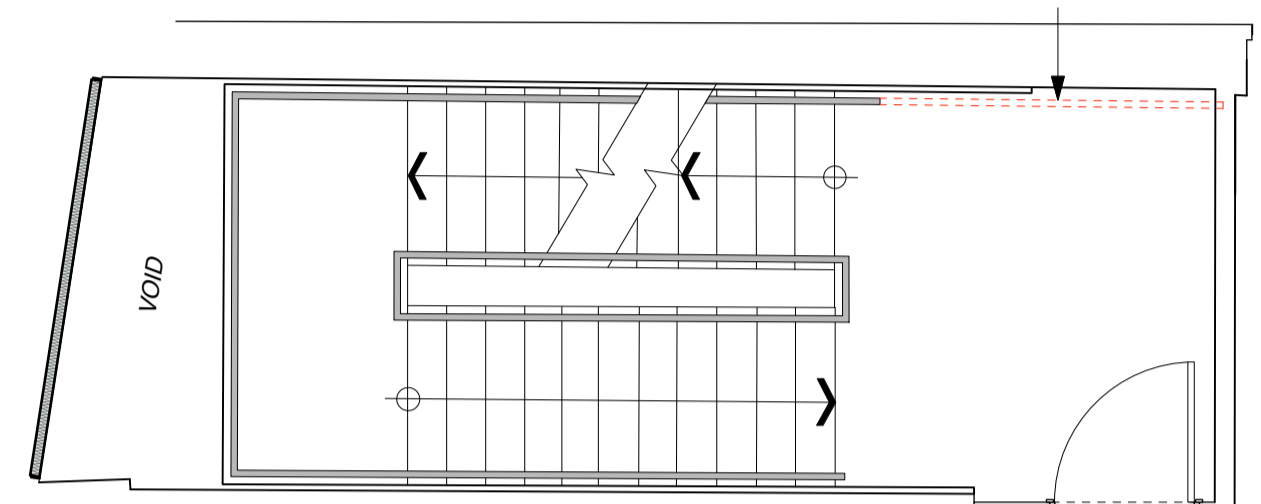


Main Staircase Lighting det.  
527-AS.15



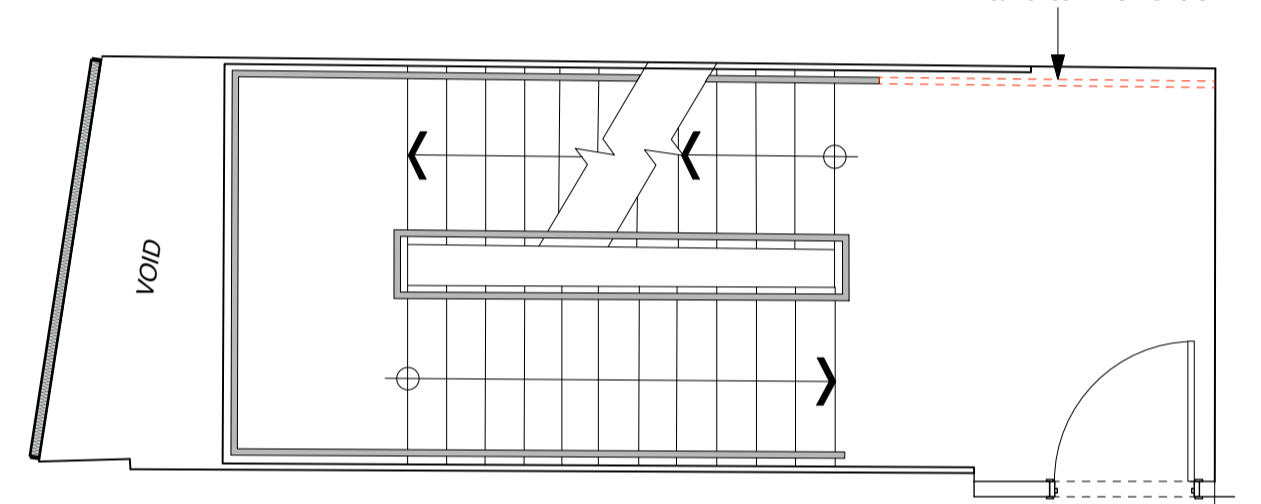
6TH FLOOR

1500  
Cut back existing balustrade. Brackets may have to be adjusted to suit and turn end down 90°



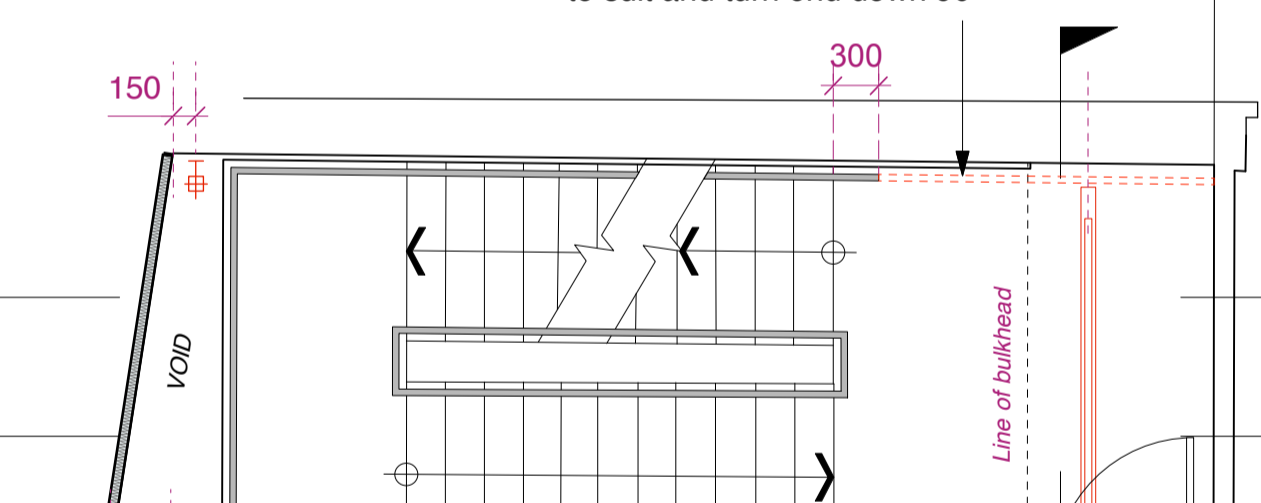
5TH FLOOR

5D-01  
Cut back existing balustrade. Brackets may have to be adjusted to suit and turn end down 90°

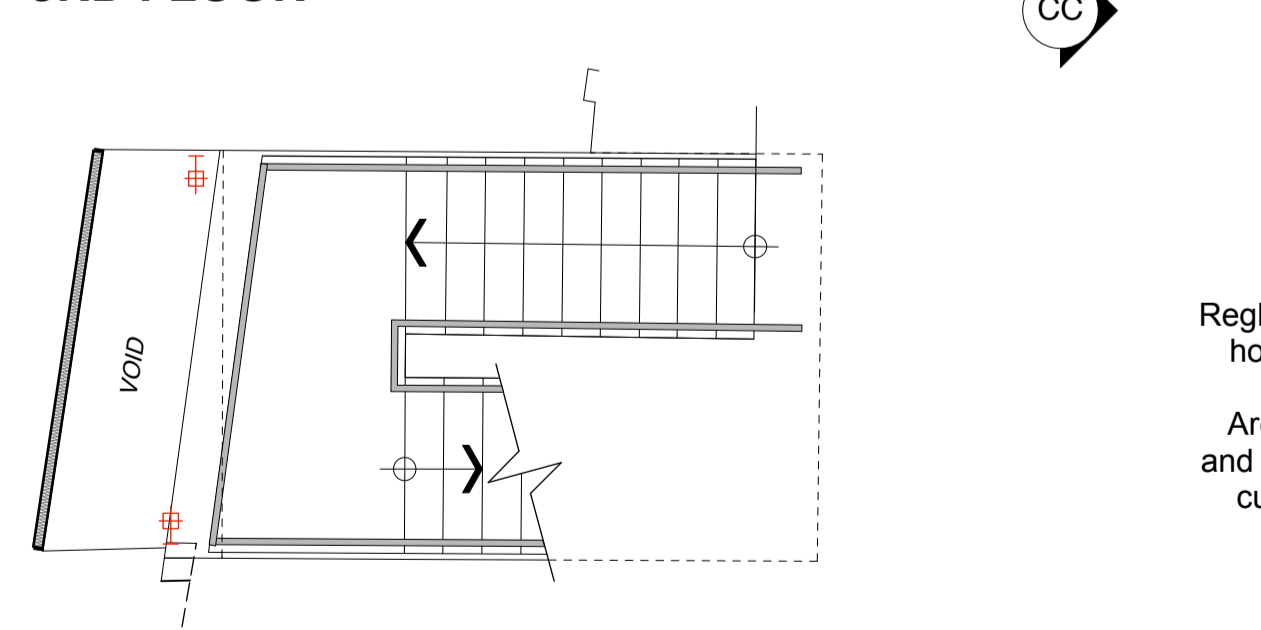


4TH FLOOR

4D-01  
Cut back existing balustrade. Brackets may have to be adjusted to suit and turn end down 90°



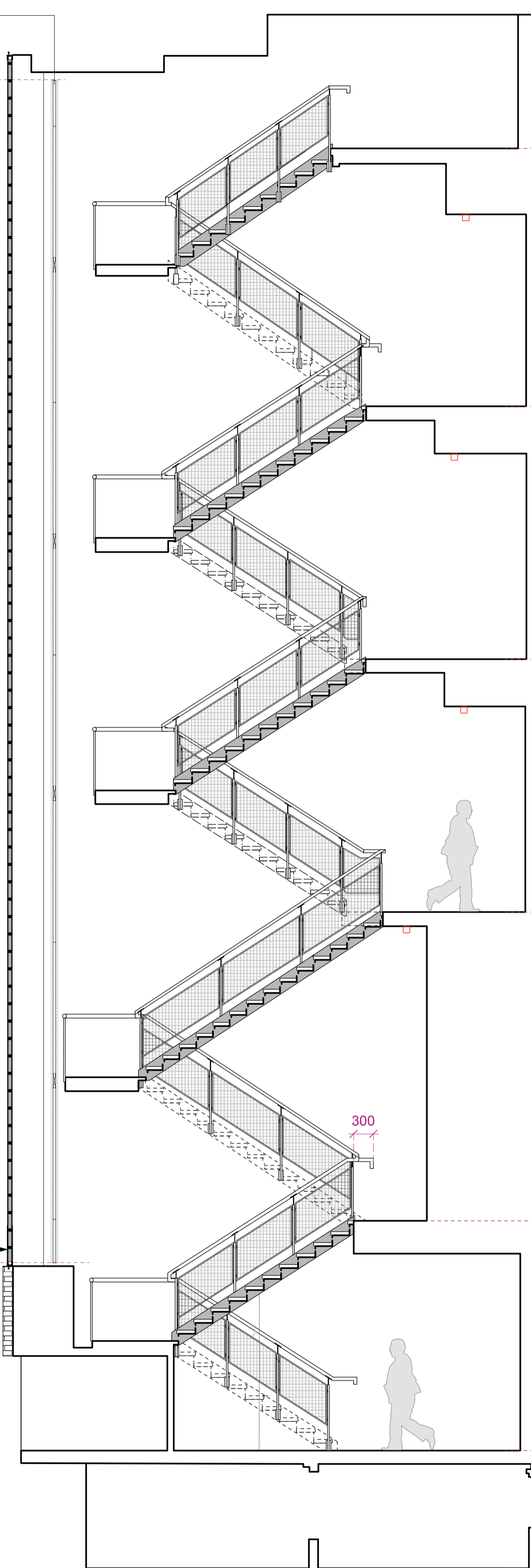
3RD FLOOR



GRD FLOOR

Reglit glass to be washed down with hot soap water inside and outside. (Not to use any chemicals) Architect to inspect once complete and advise if silicon sealant requires cutting out and replacing between horizontal sections of reglit with translucent silicone.

Approx. 18000



SECTION AA  
(Scale 1:50)

FFL +121.88  
6th Level

FFL +117.95  
5th Level

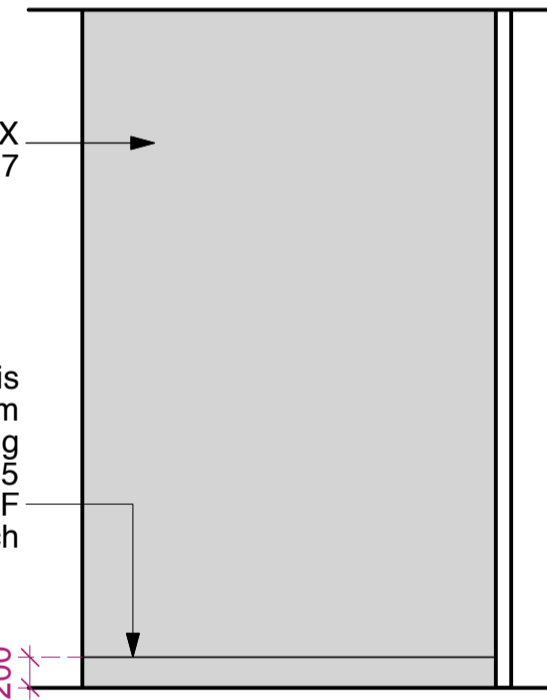
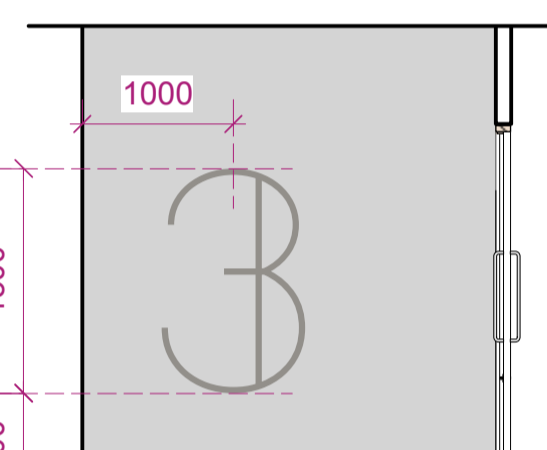
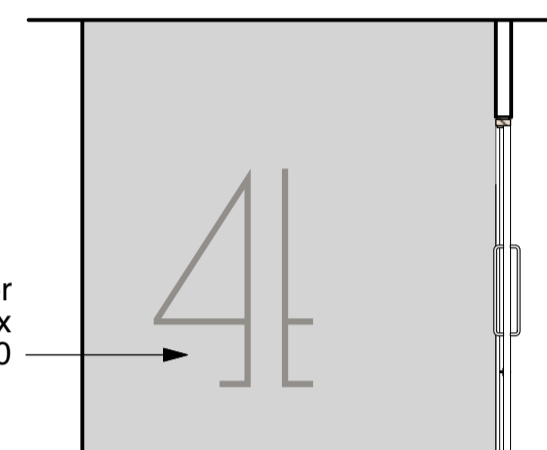
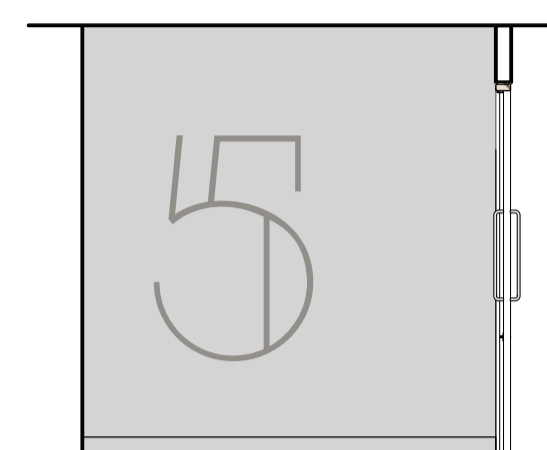
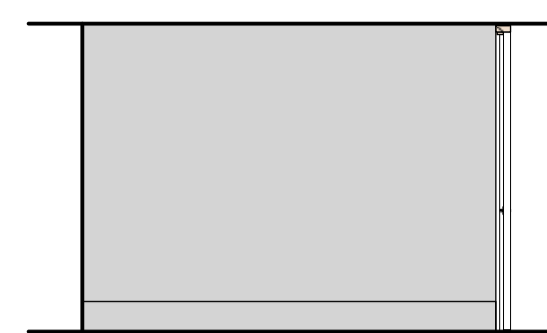
FFL +114.10  
4th Level

FFL +110.25  
3rd Level

FFL +105.56  
M Level

FFL +102.05  
Upper Grd Level

FFL +100.26  
Grd Level



SECTION CC  
(Scale 1:50)

Applied vinyl floor number Ref: Dulux 50GY 16/030

Wall painted DULUX 50GY 53/017

Install new skirting to this wall only. 15x200mm Classic Ogee MDF skirting board Ref: CLA15 Moisture resistant MDF As supplied by Skirtech

Door Joinery Schedule  
527-AS.22-24

Stair&Balustrade det.  
527-AS.14

FFL +121.88  
6th Level

FFL +117.95  
5th Level

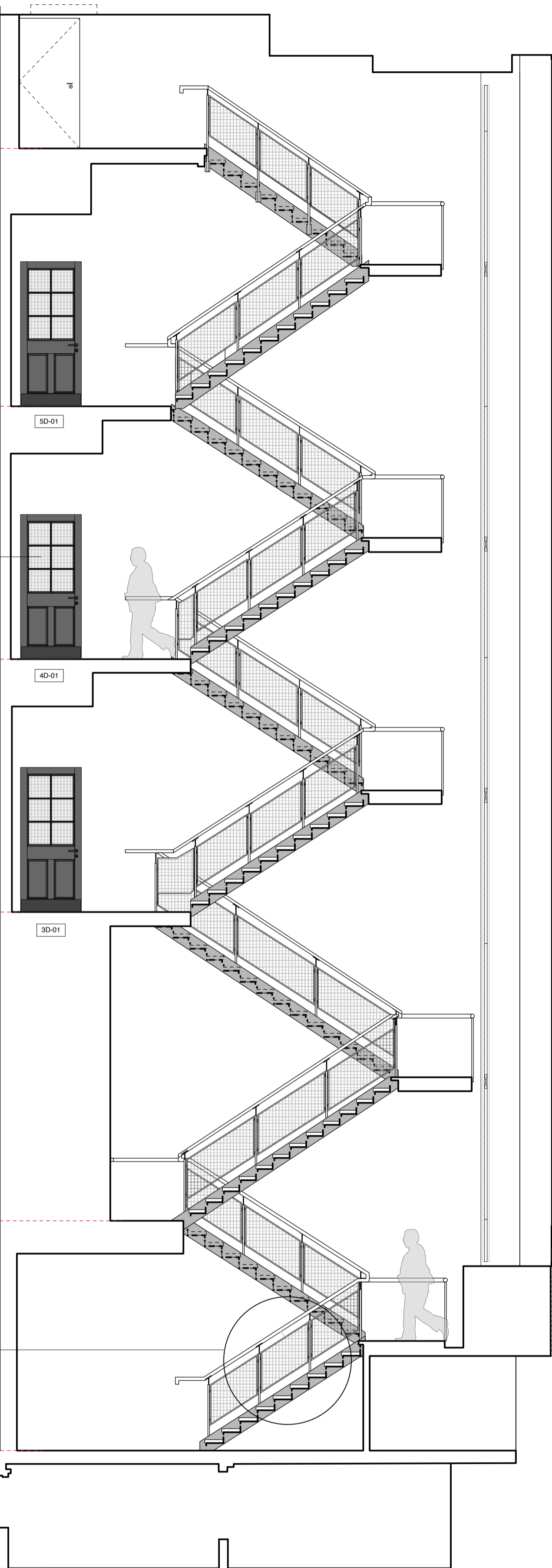
FFL +114.10  
4th Level

FFL +110.25  
3rd Level

FFL +105.56  
M Level

FFL +102.05  
Upper Grd Level

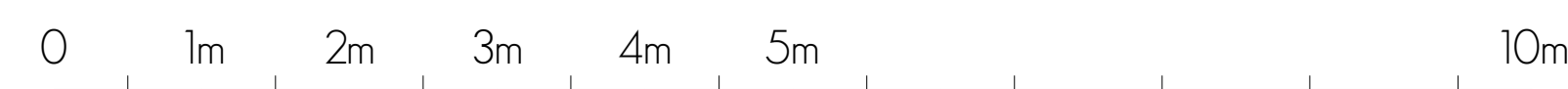
FFL +100.26  
Grd Level




SECTION BB  
(Scale 1:50)

MAIN STAIRCASE PLAN AND SECTIONS

TO BE READ IN CONJUNCTION WITH LIGHTING DETAIL DRG: 527-AS.14,15



PRELIMINARY

PROJECT SEVEN DIALS WAREHOUSE LONDON WC2			DRAWING TITLE PROPOSED MAIN STAIRCORE		
CLIENT PEC NEALE LTD			 architecture & interior design		
SCALE 1:50 @ A1		DATE OCT 16	DWG BY LM		REV.
CHOD. DS	DWG NO. 527-AS.13		T: 020 7549 2133 F: 020 7549 2144 E: info@gpadlondonltd.com W: www.gpadlondonltd.com		
This drawing is the copyright of good london ltd. Not to be reproduced, reprinted or disclosed to any unauthorised person either whole or in part without written permission. Do not scale off this drawing. All indicated dimensions to be checked and verified on site by the contractor before commencement of any fabrication, drawings or work whatsoever on site. Report any discrepancies to the Architect immediately. Drawings to be read in conjunction with relevant drawings and specification. © gpad London Ltd.			Unit 1 9a Dallington Street Clerkenwell London EC1V 0BQ		