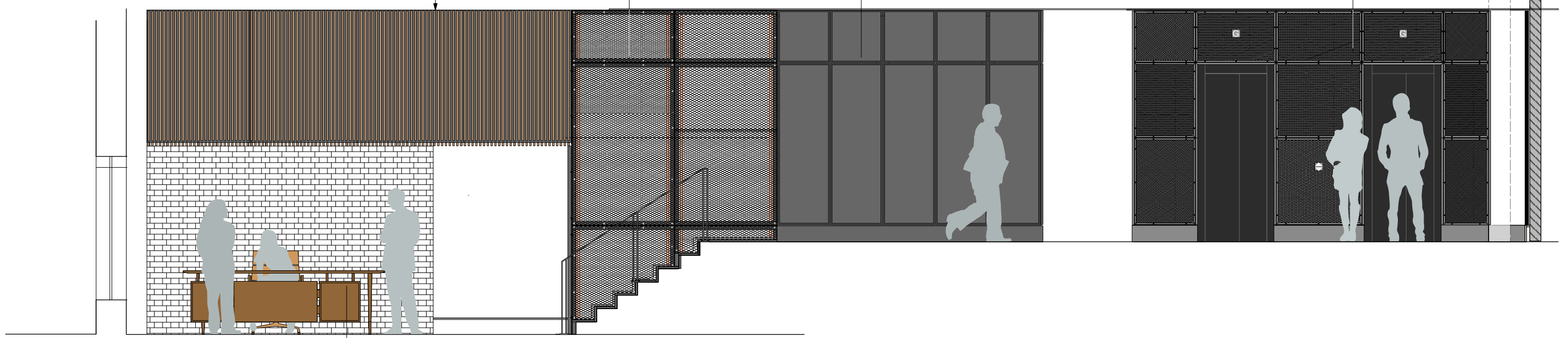


FINISH TO CEILING AND FACE OF BULKHEAD :
Slatted timber fixed to a black painted 18mm FR MDF board (Graphite Black, RAL 9011). Raft fixed to existing plasterboard duct boxing on timber battens screwed to existing frame.

Reception details Page 2
527-AS.11

Reception details Page 2
527-AS.10

Lift surround details
527-AS.07



SECTION AA

Reception Details Page 1
527-AS.10

Reception Details Page 2&3
527-AS.11 & 12

Proposed Ground Floor RCP
527-AS.02

Existing MF suspended ceiling above the reception area including all frame and support to be adjusted and raised up by 150mm. Line frame with 1 layer of 12.5mm Wallboard in accordance with manufacturer guidelines. Allow for suitable timber noggin and/or 18mm plywood to fix suspended light fittings.

Ceilings to be skimmed and decorated in Dulux Trade Diamond Matt, Colour Ref: RAL 9016 Traffic White.

All fixings, joints and junctions are to be installed to the manufacturer specifications in order to achieve recommended performance.

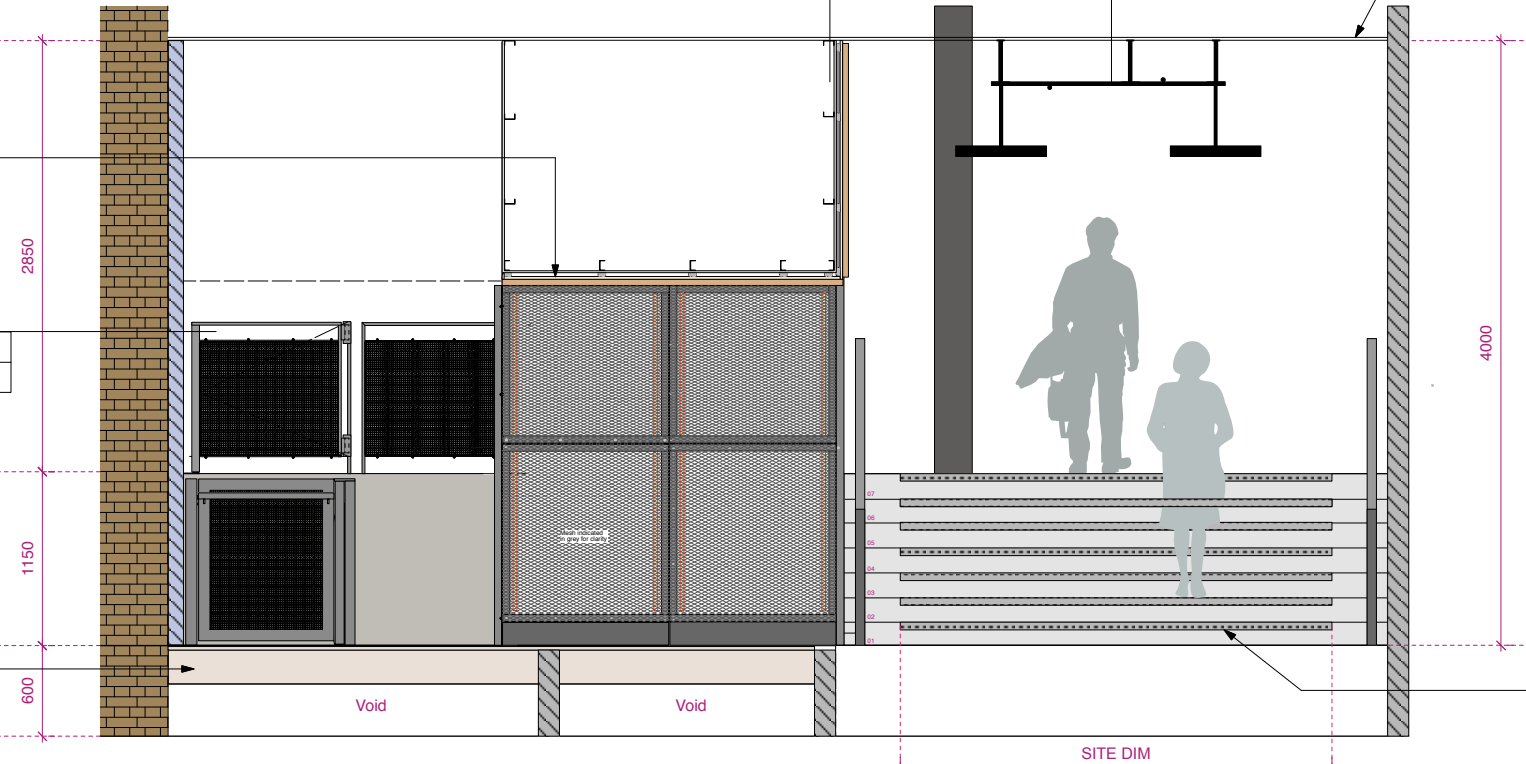
Timber slats 25mm x 40mm, unfinished solid oak wood strips. Entire raft ceiling to be finished with fire protection coatings: 2 x coats Envirograf Q/VFR/C @ 12-15 m2 per litre per coat. (The protective top coat is to be supplied in a matt finish. (1 x coat Q/VFR/Premier @ 12m2 per litre) to achieve Class '0' fire rating. N.B. Contractor to provide a sample for approval

Reception Desk Details
527-AS.09

Build up floor levels to suit new internal arrangement using block and beam (to match existing construction method). Allow for the new platform lift pit construction all in accordance with structural engineer's details and specifications.

Grd Floor (Reception) FFL 100,090

Grd Floor (Studio) FFL 100,090



Form new concrete steps in accordance with structural engineer's details and specifications. New steps setting out to take into account new floor finish and flush nosing. Details to be provided by Contractor/supplier as part of CDP as it will depend on depth of sub-floor following strip-out. FFL to be maintained as existing.

Install 55 x 55mm Cast metal antislip stair nosing Ref AATI type SN9/55-HDLT As supplied by Gradus 01625 428922

Supply and install floor mounted steel handrails to both sides. See drawing no. 527-AS.10 for details.

RECEPTION LOBBY INTERNAL SECTIONS P1

All finishes and surface materials to be applied and or laid in accordance with the manufacturer's specifications and appropriate BS standards.

0 1m 2m 3m 4m 5m

PLANNING

PROJECT SEVEN DIALS WAREHOUSE LONDON WC2			DRAWING TITLE RECEPTION LOBBY INTERNAL SECTIONS P1		
CLIENT PEC NEALE LTD					
rev.	date	notes	SCALE 1:25@A1 1:50@A3	DATE Oct 2016	DWG BY GG
<small>This drawing is the copyright of gpad london ltd. Not to be reproduced, retained or disclosed to any unauthorised person either wholly or in part without written permission. Do not scale. All indicated dimensions to be checked and verified on site by the contractor before commencement of any fabrication drawings or work whatsoever on site. Report any discrepancies to the Architect immediately. Drawings to be read in conjunction with relevant drawings and specification.</small>			CHKD. DS	DWG NO. 527-AS.05	T: 020 7549 2133 F: 020 7549 2144 E: info@gpadlondonltd.com W: www.gpadlondonltd.com
			Unit 1 9a Dallington Street Clerkenwell London EC1V 0BQ		