

NOTE:
GRIDLINES ARE SET OUT ON EXISTING BUILDING
STRUCTURE LINES

PROPOSED GROUND FLOOR
504 ft² TOTAL G/A
248 ft² STUDIO B1 OFFICE G/A
165 ft² RECEPTION B1 OFFICE G/A
60 ft² CYCLE STORE G/A

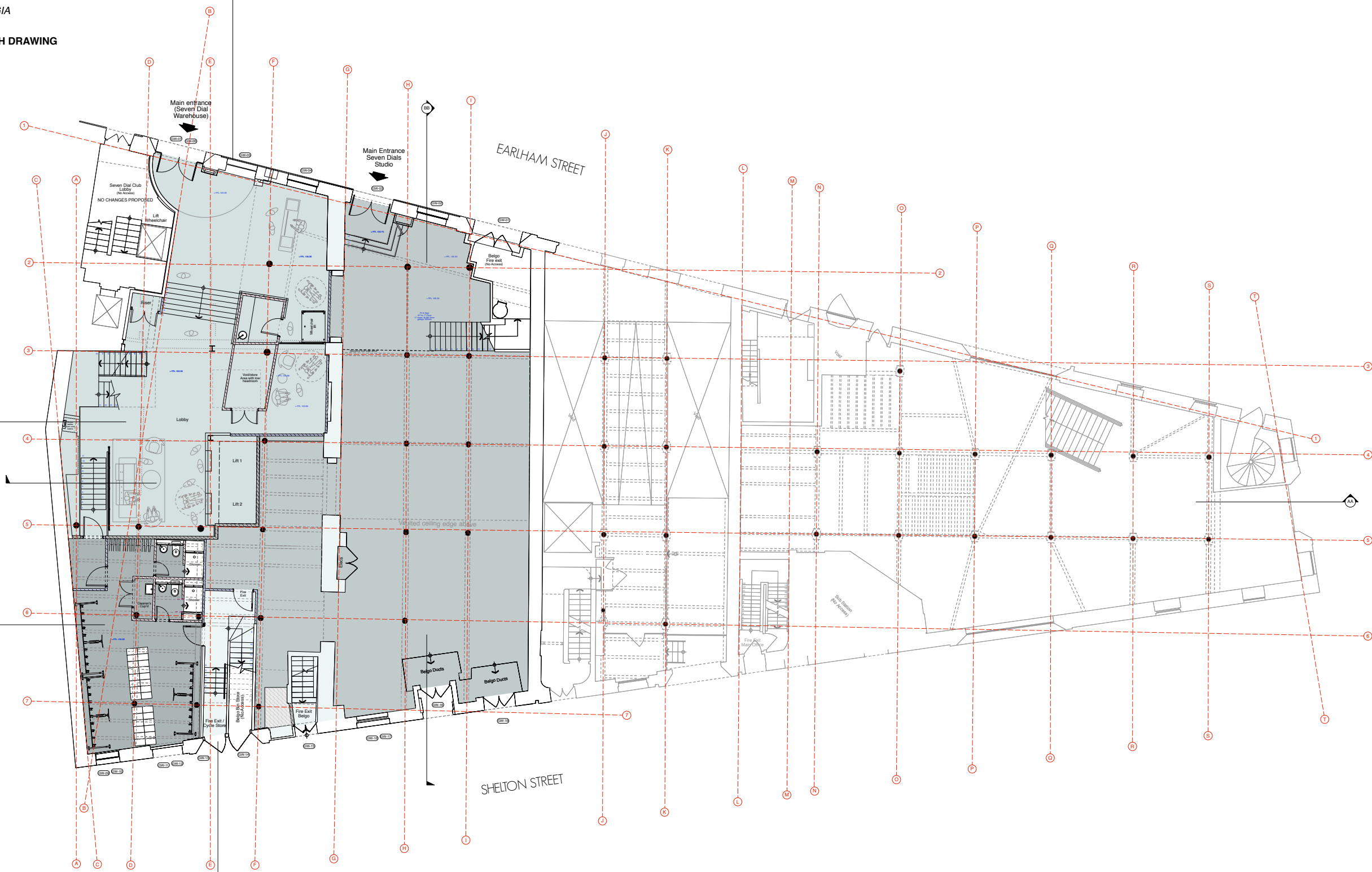
**TO BE READ IN CONJUNCTION WITH DRAWING
NO. 527-AS.01**

Alterations To Facade
527-AS.31

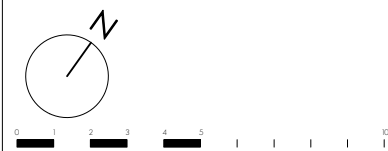
Ground Floor Reception
527-AS.01

Cycle Store Details
527-AS.20

Cycle Store Stair Details
527-AS.22



PROPOSED GROUND FLOOR PLAN



NOTE:
The proposed extension area is subject to;
- Statutory approval by local authorities;
- Assessment of impact on rights of light;
- Assessment of impact on daylight and sunlight;
- Assessment of impact on fire strategy;
- Assessment of existing structural loading capacity;
- Assessment of building services;

PLANNING

rev.	date	notes

PROJECT		SEVEN DIALS WAREHOUSE LONDON WC2	
CLIENT		PEC NEALE LTD	
SCALE	1:100 @ A1	DATE	Oct 16
CHKD.		DWG NO.	527-GA.01
DWG BY		SF / DS	
REV.			

DRAWING TITLE
PROPOSED GROUND FLOOR PLAN

gpad architecture & interior design

T: 020 7549 2133
F: 020 7549 2144
E: info@gpadlondonltd.com
W: www.gpadlondonltd.com

Unit 1
9a Dollington Street
Clerkenwell
London EC1V 0BQ