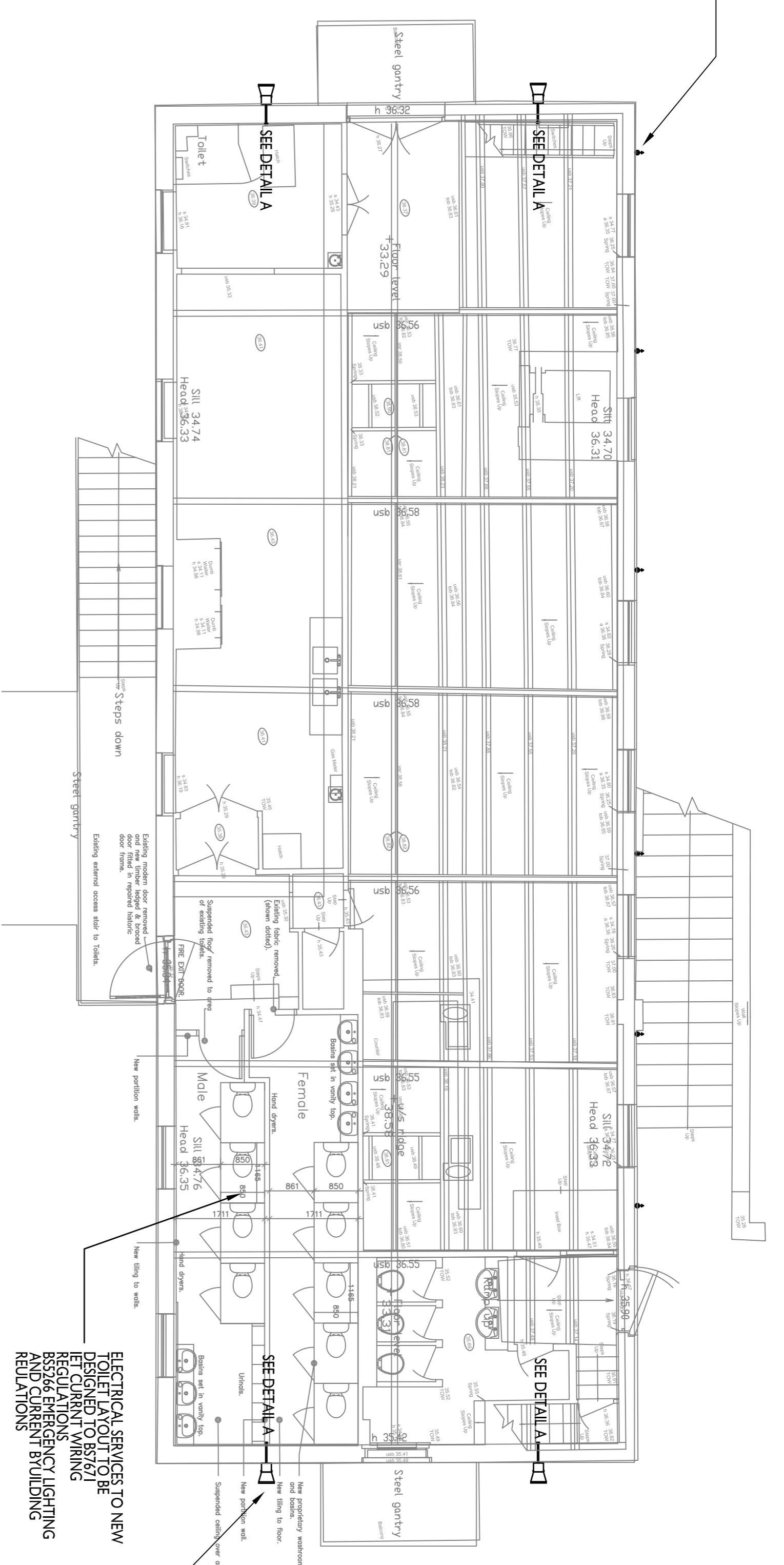
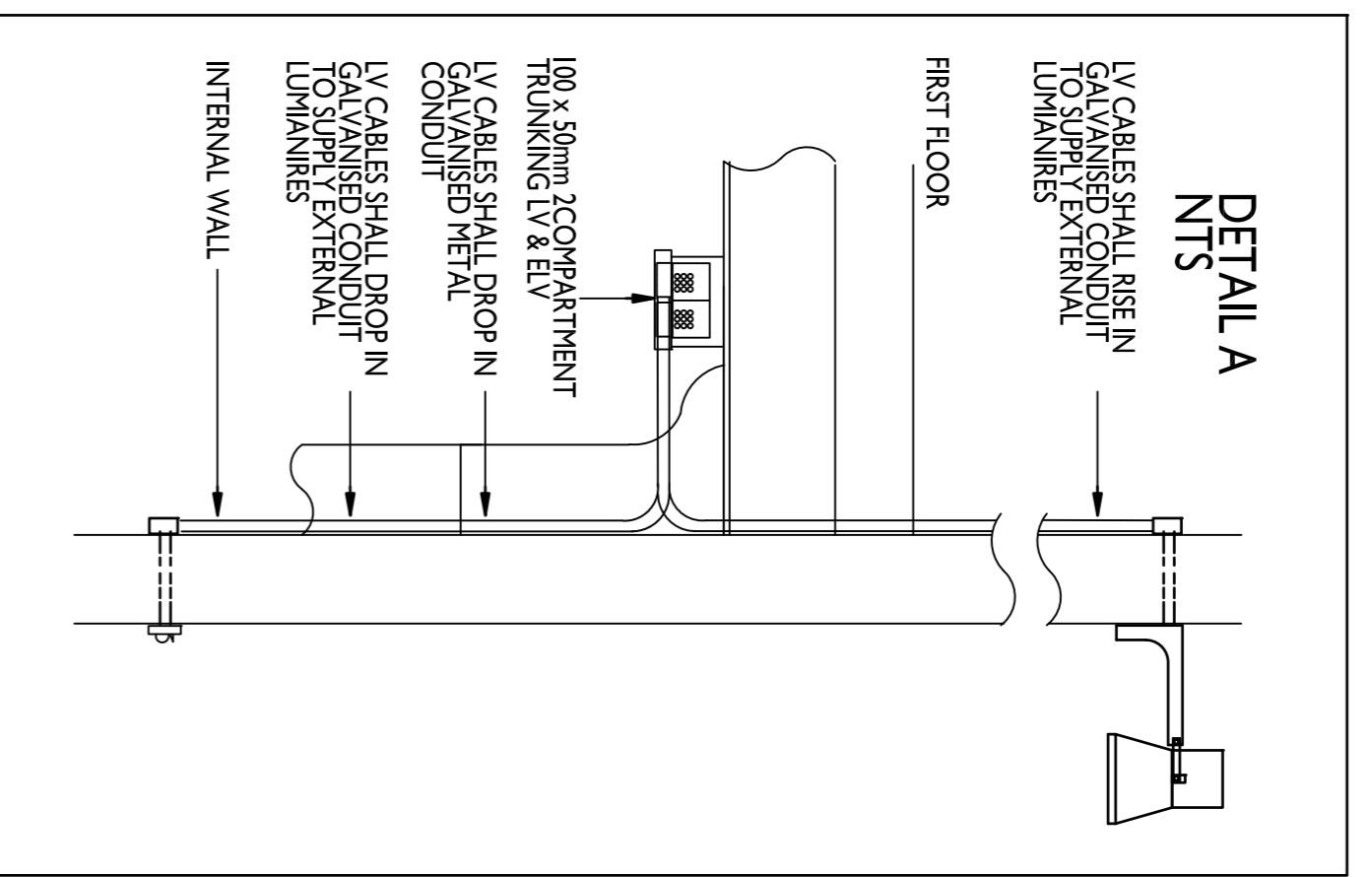


GENERAL TRUNKING TO BE MOUNTED TO FIRST FLOOR PHOTOCELL LIGHTING AS PER DETAIL A FOR LOCATIONS ON FIRST FLOOR



FIRST FLOOR

EXISTING INCOMING SUPPLY FROM THE "FIT" DISTRIBUTION BOARD WITHIN BLOCK D TO REMAIN AND THE EXISTING MAIN DISTRIBUTION BOARD WITHIN THE EXISTING CURBOARD.
ALL EXISTING CABLES FROM THAT RUN EXTERNAL FROM THIS CURBOARD SHALL BE REMOVED.
ALL EXISTING EXTERNAL ACCESSORIES LIGHTING, POWER & ELV CABLES SHALL BE REMOVED.
ALL REDUNDANT ELECTRICAL EQUIPMENT SHALL BE REMOVED FROM THIS CURBOARD.
A NEW 6WAY TRN DISTRIBUTION BOARD (DB) SHALL BE SUPPLIED FROM THE EXISTING MAIN DISTRIBUTION BOARD WITHIN THIS CURBOARD SHALL SUPPLY THE PROPOSED EXTERNAL LIGHTING POWER AND FUTURE TOILETS.
THIS CURBOARD SHALL ALSO BE THE CONNECTION POINT FOR ANY ELV SERVICES THAT REQUIRE RELOCATION AS PER THE MAINS ELECTRICAL DRAWING.
CABLES SHALL BE IDENTIFIED BY RED AND GREEN TAGS.

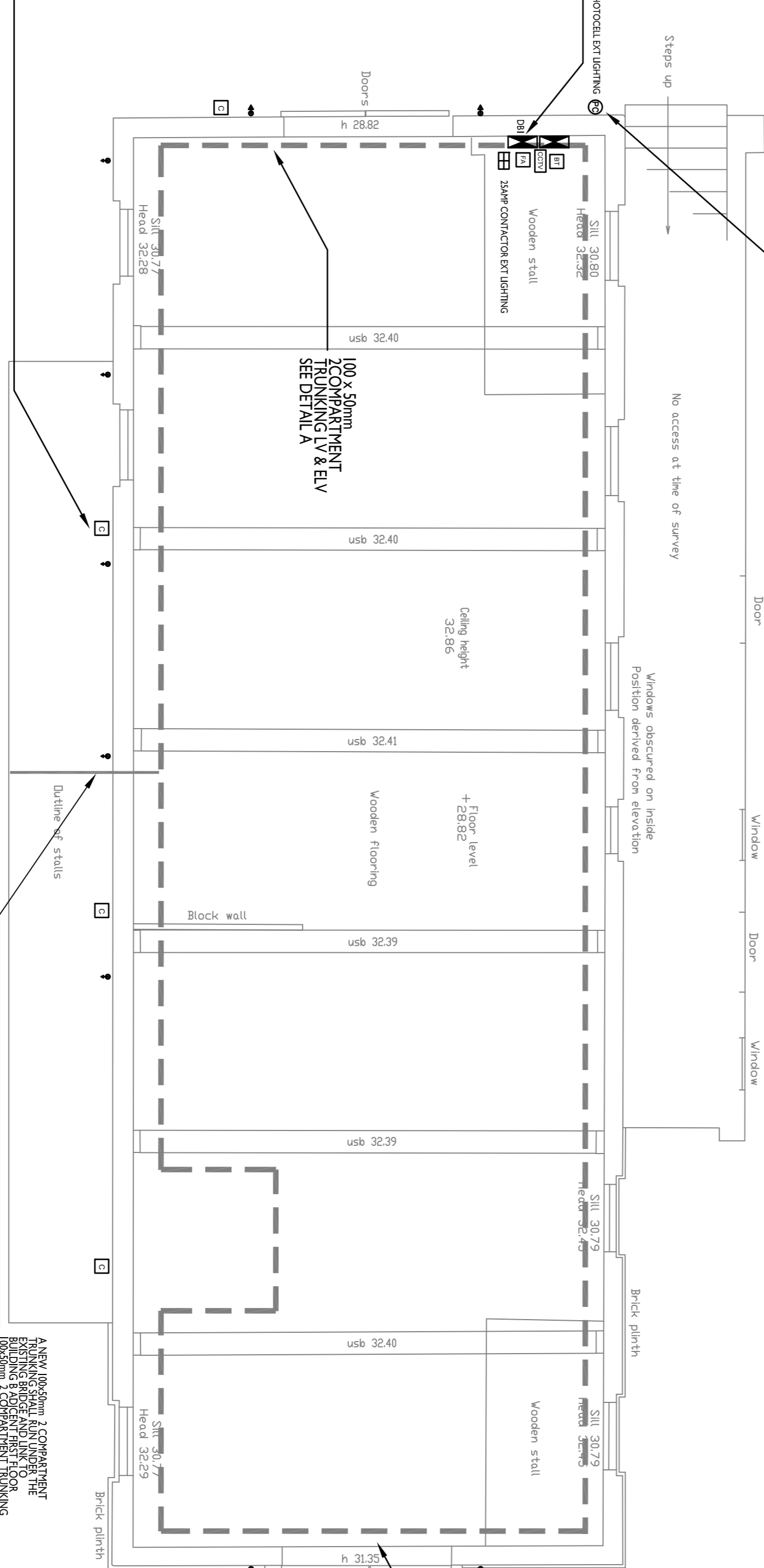
FLOOR BOX DETAIL AS BLOCK D - SEE DETAIL B



GENERAL NOTES
1) Drawing and design Copyright.
2) Figured dimensions only are to be used.
3) All dimensions to be checked on site, differences between drawings and specification or bills of quantities to be referred to OPTIMA B.E.S. Ltd.

ELECTRICAL SERVICES NOTES
E1) The objective is to achieve a distribution solution to remove the Mechanical & Electrical services from the facade of Building C the Long Aables. The contractors shall sequence the works to limit the disruption to the retail units & the Cuban Bar.

GROUND FLOOR



E2) The contractor shall employ specialist contractors to relocate the existing services from the facade as indicated on OPTIMA B.E.S. Ltd drawing E100 to ensure the transfer of existing services from the facade to the new internal containment system ducting and cattery links between buildings.

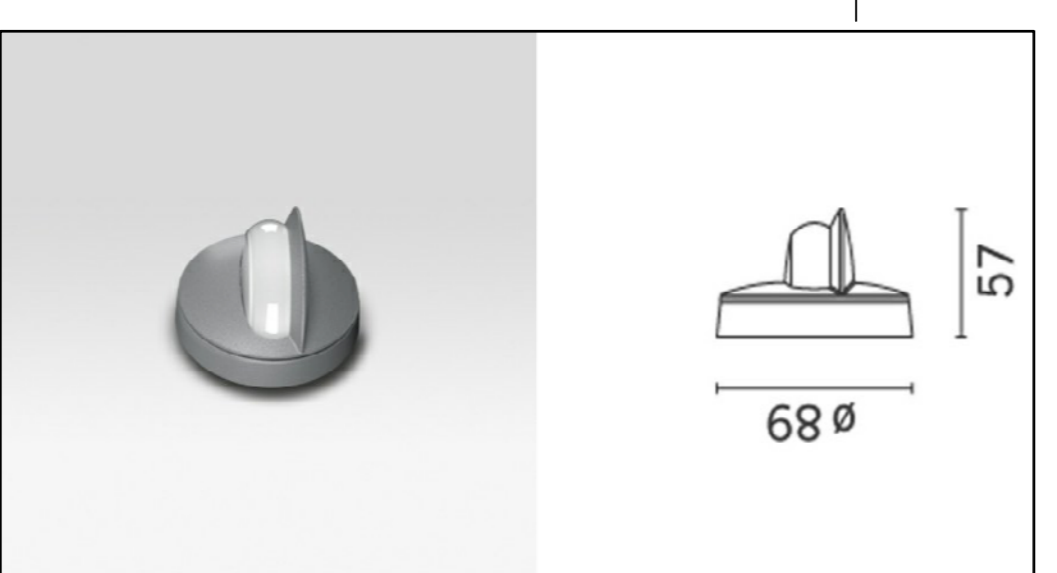
The systems are as follows:
Data
CCTV
Intruder
Intercom (if applicable)
Extra low voltage cables
Low voltage cabling
Water services
Again to minimise disruption all cabling and connection box shall be installed before the existing services.

E3) For indicative mains and sub circuit schematics see DB1 above
E4) Components and during details are indicative only. It is the responsibility of the contractor to liaise with the specialist contractors & architect on final locations to ensure the OPTIMA B.E.S. Ltd specification requirements are achieved.

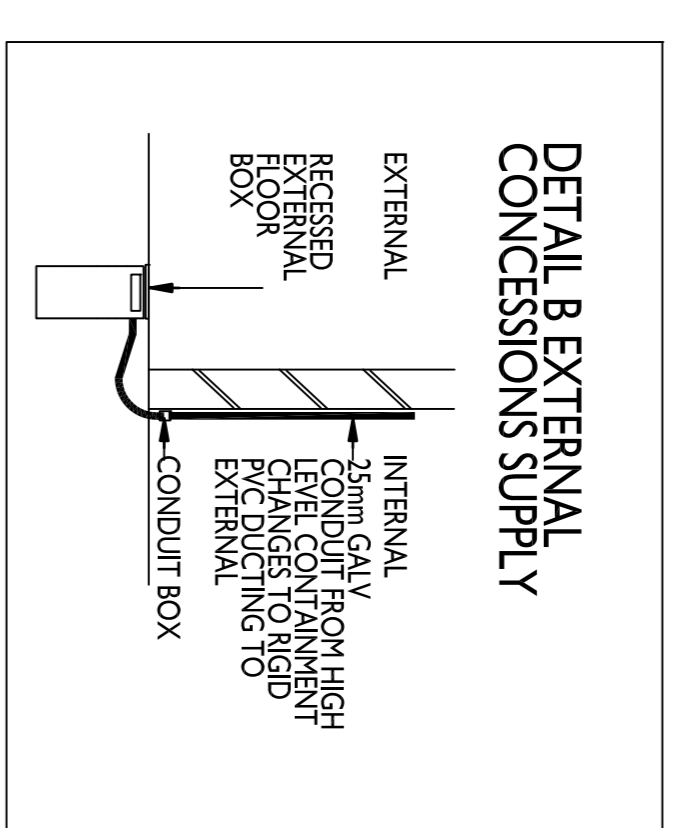
E5) All electrical shall be installed as per the requirements of BS 7671 IET Wiring Regulation and current amendments.
E6) Any electrical services passing through fire compartments shall be sealed in accordance with current building regulations.
All cable joints must be accessible.

E7) All cable sizes are indicative only. It is the responsibility of the electrical contractor to ensure the cabling is sized to the requirements of BS 7671 IET Wiring Regulations and current amendments.
E8) CCTV - Locations to be confirmed by the CCTV specialist company.
E9) Fire Alarm - Locations to be confirmed by the Fire Alarm specialist company.
E10) External lighting shall be wired in galvanised metal conduit and 6491b singles cable run internally within the building route etc on site

100 x 50mm 2COMPARTMENT TRUNKING LV & ELV SEE DETAIL A
100 x 50mm TRUNKING LV & ELV SEE DETAIL A
GENERAL CONTRACTOR TO BE RESPONSIBLE FOR THE LOCATION OF THE PHOTOCELL LIGHTING ON THE FACADE OF BUILDING C TO BE MOUNTED TO FIRST FLOOR PHOTOCELL LIGHTING AS PER DETAIL A FOR LOCATIONS ON FIRST FLOOR



NO.	DESCRIPTION	DATE	BY	CHECKED
1	ISSUED FOR PERMIT TO WORK	14/08/15	TA	DB
2	ISSUED FOR TENDER	14/08/15	TA	DB
3	ISSUED FOR CONSTRUCTION	14/08/15	TA	DB
4	ISSUED FOR AS-BUILT DRAWING	14/08/15	TA	DB
5	ISSUED FOR ARCHIVE	14/08/15	TA	DB



TYPE OF HIGH LEVEL EXTERNAL LUMINAIRE AS BLOCK D (EXCEPT 25W LED VERSION)
LED
35W, 3200lm (with power of 107)
Luminaire Neutral 4000K CRI70
Optic ST1.0 - road optics l = 4h / d = 1
Adjustability: directional
Material: grey, stainless steel
Size (mm): 380x352, Weight (kg): 10.50

CityWoody > CityWoody wall mounted

Client	STANLEY SIDINGS
Project	CAMDEN STABLES MARKET LONDON
Drawing	BUILDING C PROPOSED ELECTRICAL SERVICES
Scale	1:75 @ A1
Date	11/03/15
Drawn	TA
Checked	DB
Job No.	AP297
Drawing No.	E200
Revision	T2

OPTIMA B.E.S. LTD
Building Environmental Solutions
HIGHCLERE, 31 ABBOTS ROAD
ABBOTS LANE, ABBOTS ROAD
TEL: +44 (0)20 8732 2923
E-mail: optima@bes.com