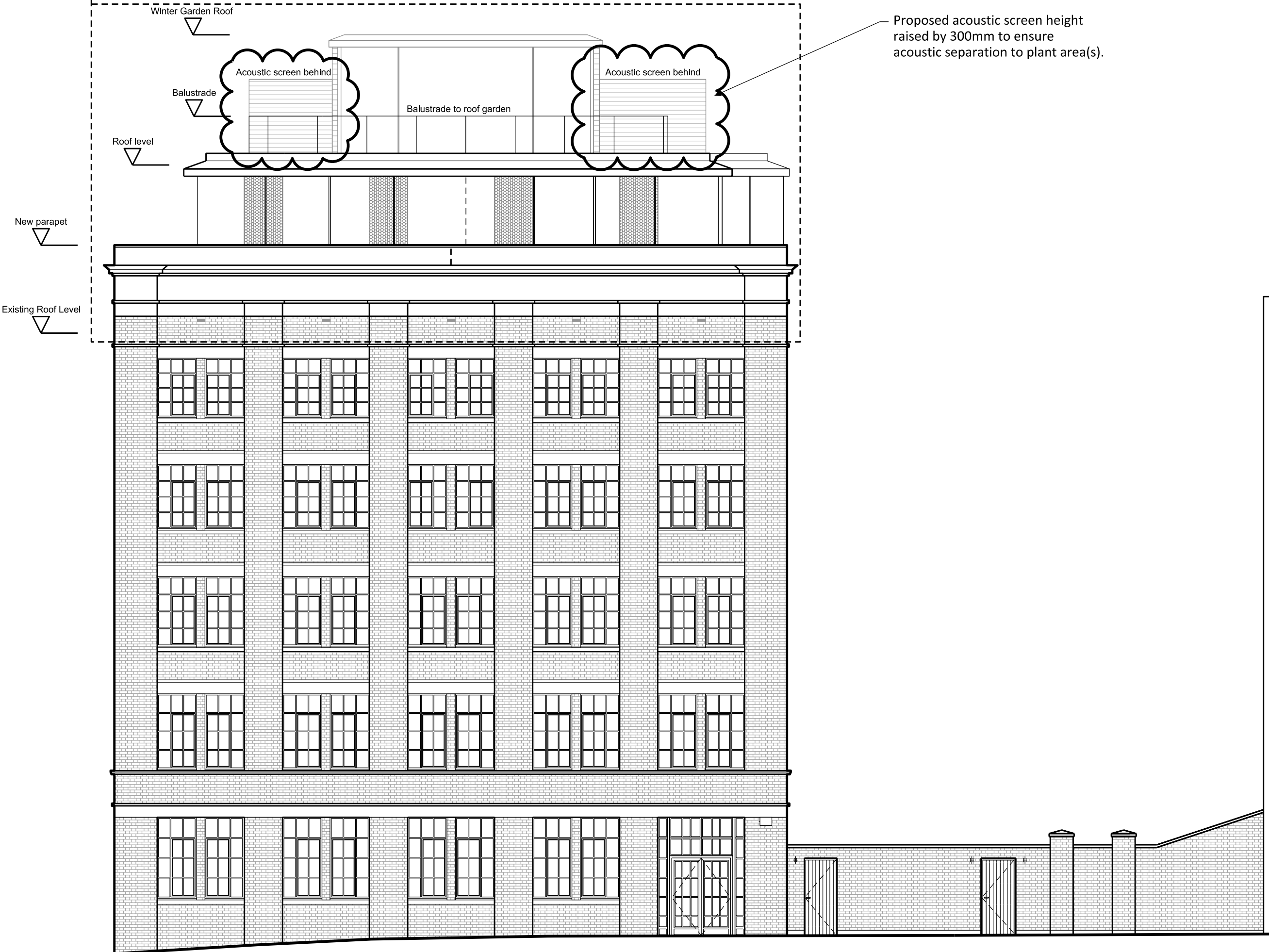
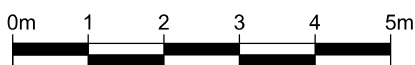


PLANNING

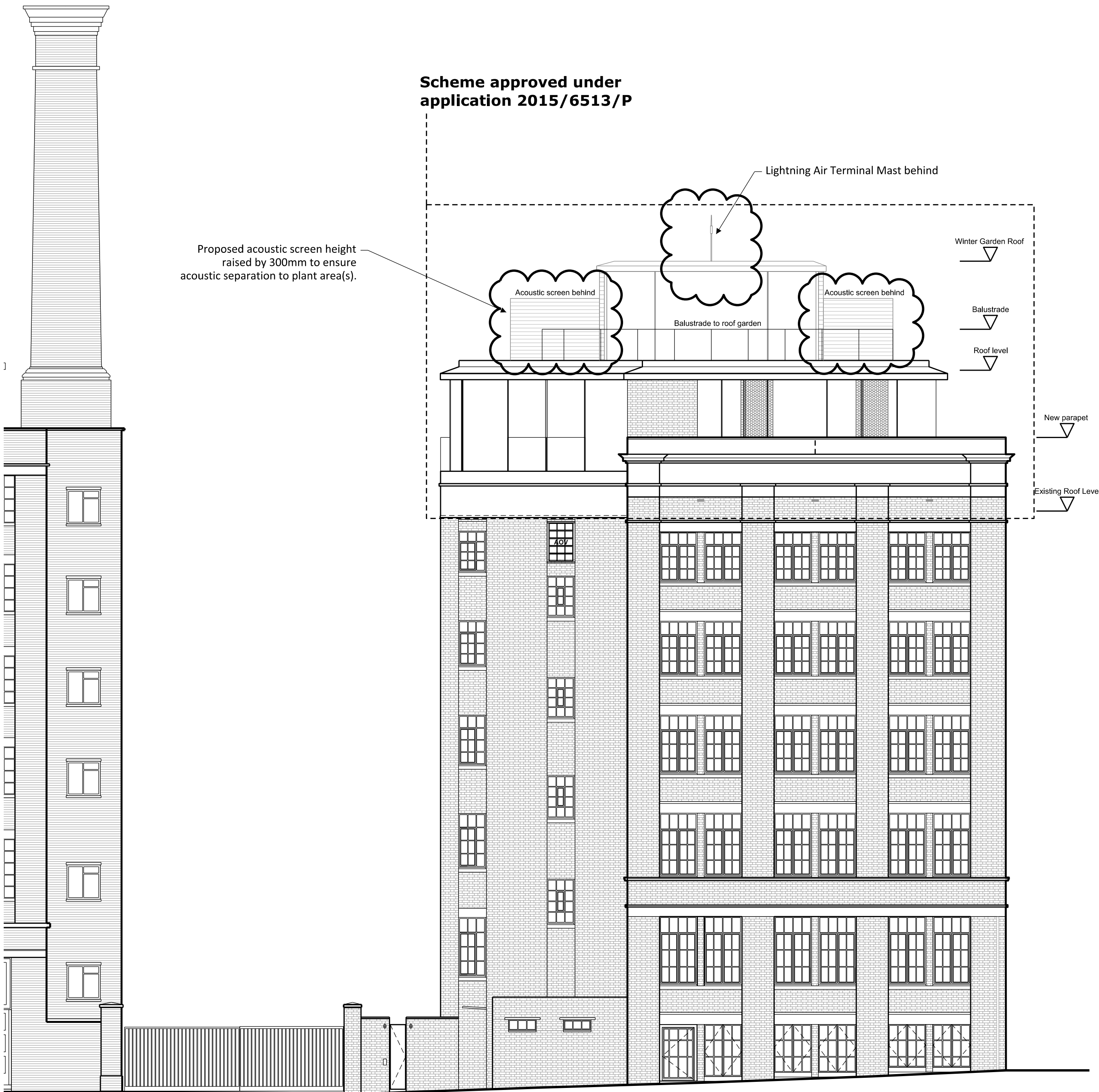
Scheme approved under application 2015/6513/P



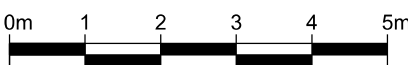
1 North elevation as proposed
152_303 Scale 1:100 @ A1



Scheme approved under application 2015/6513/P



2 South elevation as proposed
152_303 Scale 1:100 @ A1



P8	13.10.16	Construction amendments
P6	12.01.16	External finishes
P5	17.12.15	Revised SW corner
P4	17.11.15	Winter Garden proposal
P3	30.09.15	Revised corner parapet
P2	03.07.15	Revised glazed balustrade positions
P1	03.03.15	Planning Issue
Rev	Date	Note

Acoustic Engineer

Gillieron Scott Acoustic Design

Interior Design

Gordon-Duff + Linton

Project Management / Quantity Surveyor

Stace LLP

Services

Synergy Consulting

Structures

Fluid Structures

Client

Linton Property Developments Ltd

The Linton Group,
14 Basil Street, Knightsbridge, London, SW3 1AJ

Project title

LINTON HOUSE

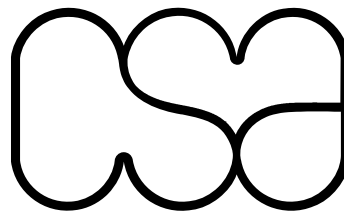
Drawing Title

**NORTH & SOUTH
ELEVATIONS AS
PROPOSED**

Scale @ A1 **1:100/1:200@A3**

Project No.	Drawing no.	Revision
152	303	P8

Status	Date of Issue
PLANNING	OCT 2016



Clive Sall Architecture Ltd.

2 Providence Yard
Ezra Street
London E2 7RJ

Copyright CLIVE SALL ARCHITECTURE LTD