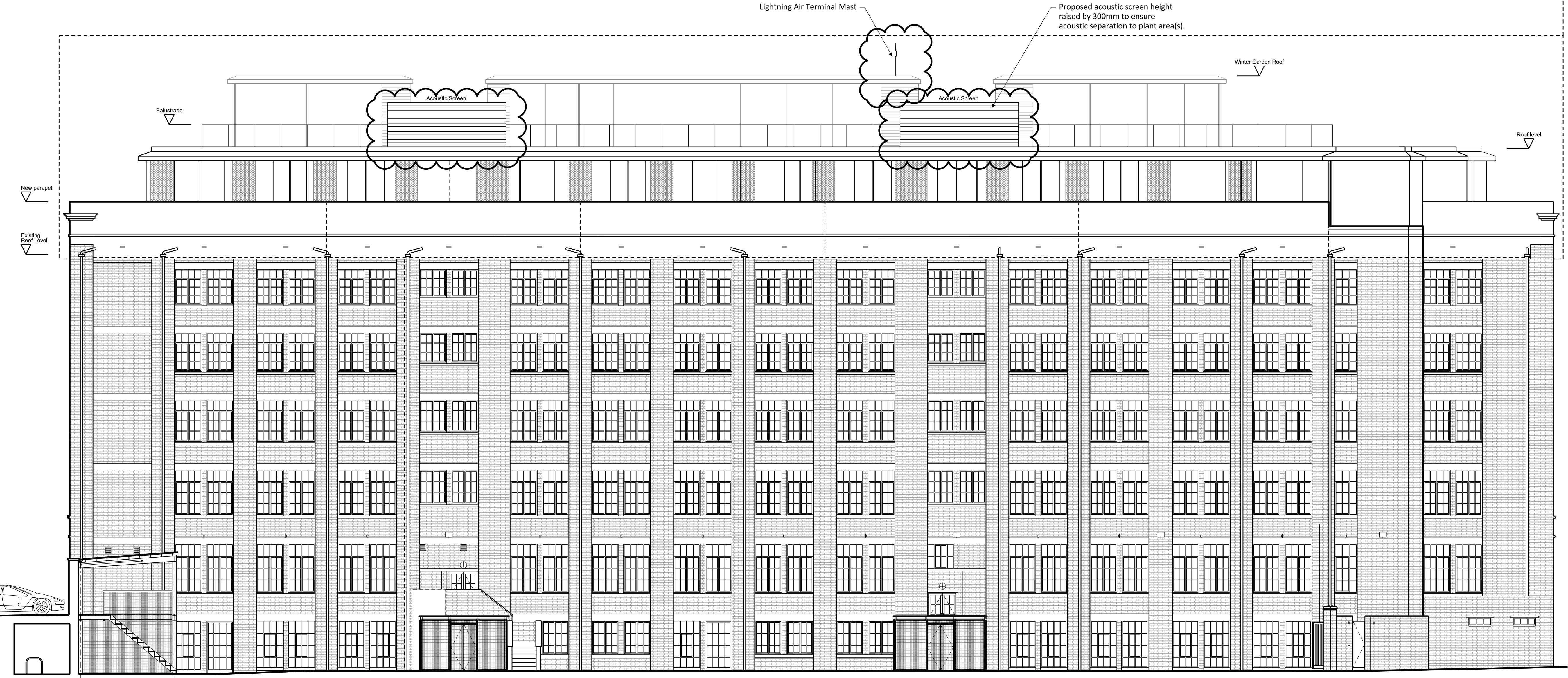


PLANNING

Scheme approved under application 2015/6513/P



P9	13.10.16	Construction amendments
P6	12.01.16	External finishes
P5	17.12.15	Revised SW corner
P4	17.11.15	Winter Gardens proposal
P3	06.10.15	Revised corner parapet
P2	03.07.15	Revised glazed balustrade positions
P1	03.03.15	Planning Issue
Rev	Date	Note

Acoustic Engineer

**Gillieron Scott Acoustic Design**

Interior Design

**Gordon-Duff + Linton**

Project Management / Quantity Surveyor

**Stace LLP**

Services

**Synergy Consulting**

Structures

**Fluid Structures**

Client

**Linton Property Developments Ltd**

The Linton Group,  
14 Basil Street, Knightsbridge, London, SW3 1AJ

Project title

**LINTON HOUSE**

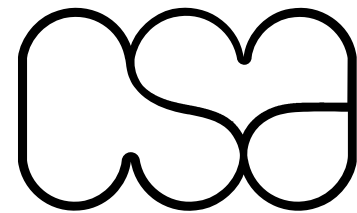
Drawing Title

**WEST ELEVATION  
AS PROPOSED**

Scale @ A1 **1:100/1:200@A3**

Project No.	Drawing no.	Revision
<b>152</b>	<b>302</b>	<b>P9</b>

Status	Date of Issue
<b>PLANNING</b>	<b>OCT 2016</b>



Clive Sall Architecture Ltd.

2 Providence Yard  
Ezra Street  
London E2 7RJ

Copyright CLIVE SALL ARCHITECTURE LTD

1 West elevation as proposed  
152\_302 Scale 1:100 @ A1

0m 1 2 3 4 5m