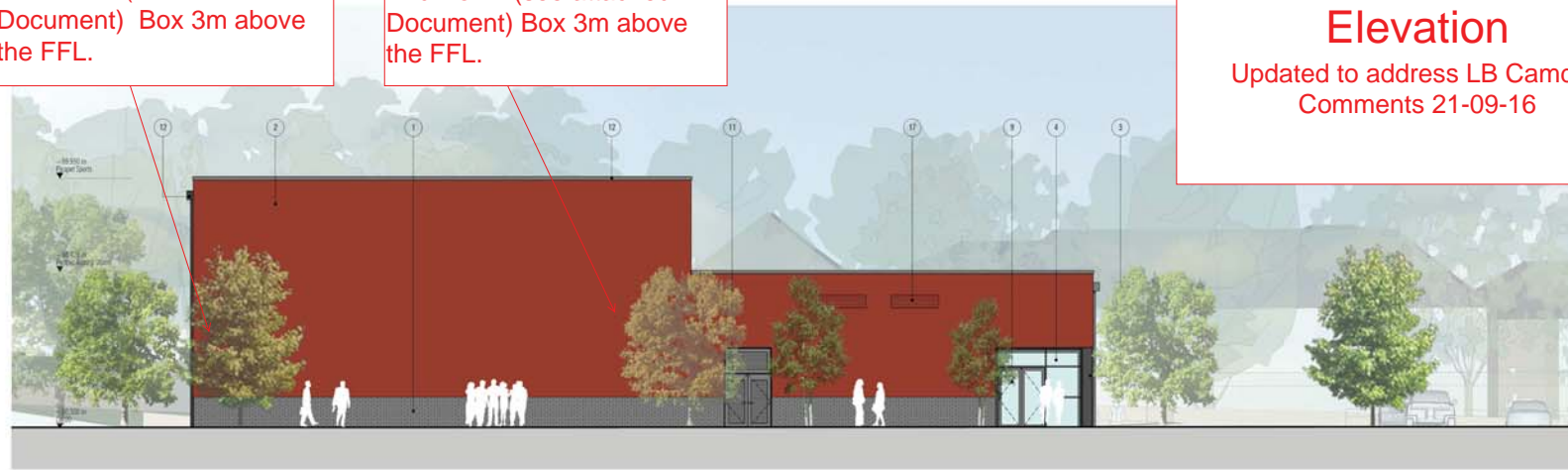


Bird Boxes-North Elevation

Updated to address LB Camden Comments 21-09-16

Bird Box 2 (see attached Document) Box 3m above the FFL.

Bird Box 1 (see attached Document) Box 3m above the FFL.



3 NORTH ELEVATION
WB-21 1:200

Bird Boxes are now being shown on the North Elevation so that they are not exposed to the heat of the sun following concerns about their previous location on the South.



4 EAST ELEVATION
WB-21 1:200



DO NOT SCALE THIS DRAWING. ALL DIMENSIONS MUST BE CHECKED ON SITE WITHIN THE ARCHITECT'S OFFICE PRIOR TO CONSTRUCTION.



- KEY**
- ① DARK GREY BLUE BRICKWORK
 - ② RED COLOURED RENDER
 - ③ CLADDING PANEL
 - ④ PPC GREY CURTAIN WALL GLAZING
 - ⑤ ACCENT RENDER PANEL
 - ⑥ PPC GREY ALUMINUM FRAMED WINDOW
 - ⑦ PPC GREY INTEGRAL VENTILATION UNIT
 - ⑧ PPC GREY INTEGRAL SPANDREL PANEL
 - ⑨ PPC GREY ALUMINUM GLAZED DOOR
 - ⑩ PPC GREY STEEL DOOR
 - ⑪ PPC GREY ALUMINUM LOUVER DOOR
 - ⑫ PPC GREY EXTERNAL DOWNPIPE, HOPPER AND COPINGS
 - ⑬ FLAME CLIPBOARD FLUE
 - ⑭ ROOF VENTILATION COWL
 - ⑮ ROOFTOP PLANT
 - ⑯ COUNTERBALANCED BALUSTRADE
 - ⑰ PPC RED INTEGRAL VENTILATION UNIT

REV	DATE	DESCRIPTION	DRN	CHK
01	12.03.15	ISSUED FOR PLANNING SUBMISSION	PP	WJ
02	12.03.15	ISSUED FOR PLANNING	PP	WJ
03	12.03.15	ISSUED FOR PLANNING	PP	WJ

DRAWING TITLE
NEW TEACHING BUILDING
EXTERNAL ELEVATIONS
SHEET 2 OF 2

SCALE 1:100

STATUS
PLANNING SUBMISSION

DRAWING NO
2657-JW-211

jestico + whites

17 Church Street, London, E16 1EJ
+44 (0) 20 7350 8500 F +44 (0) 20 7350 8502 W www.jestico.com

architecture interior design london pragae

CLIENT
WATES

PROJECT
HAMPSTEAD SECONDARY SCHOOL

AL SHEET
P03

©2014 jestico + whites. All rights reserved.