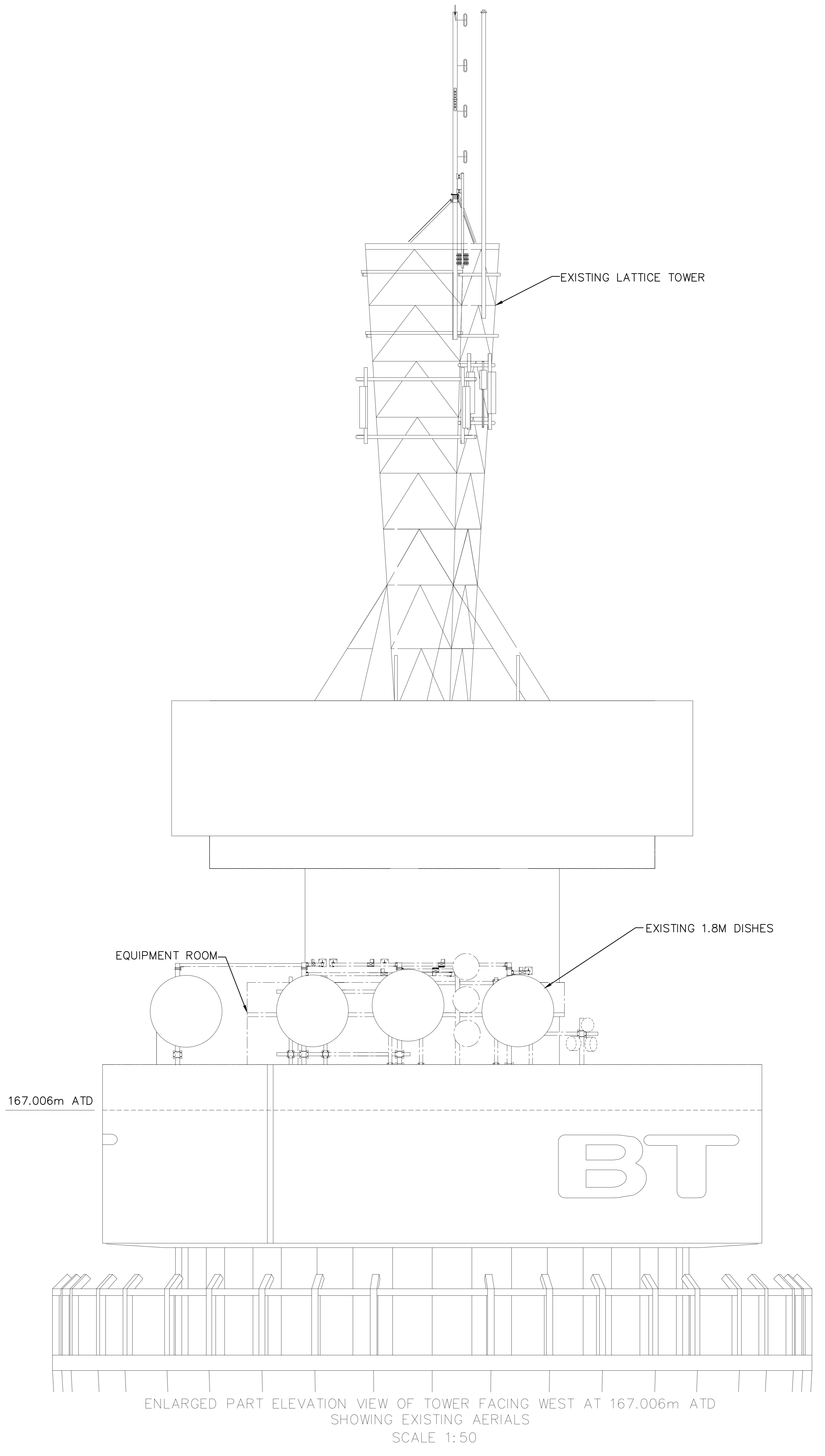
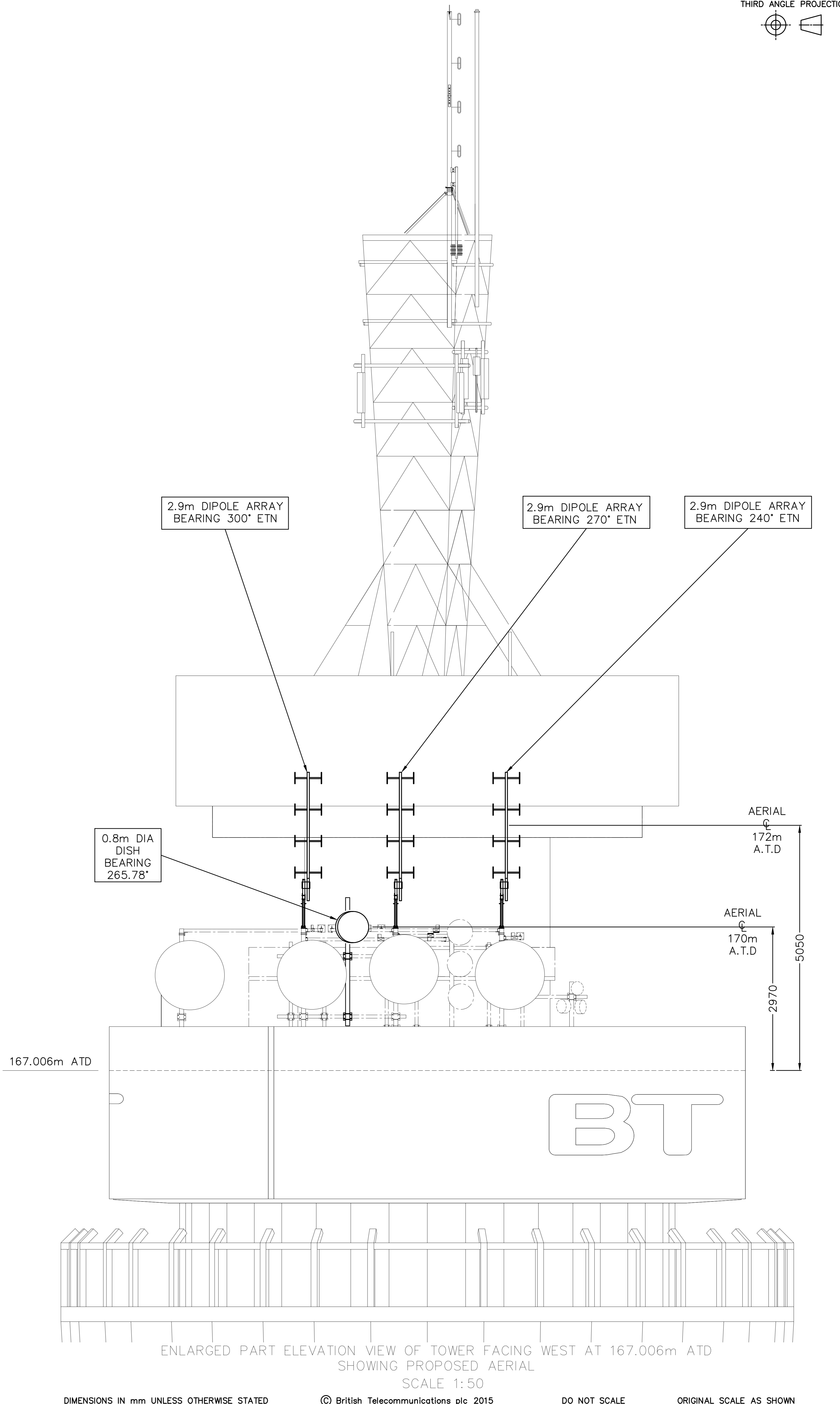


ELEVATION VIEW OF TOWER FACING WEST  
SCALE 1:300



ENLARGED PART ELEVATION VIEW OF TOWER FACING WEST AT 167.006m ATD  
SHOWING EXISTING AERIALS  
SCALE 1:50



ENLARGED PART ELEVATION VIEW OF TOWER FACING WEST AT 167.006m ATD  
SHOWING PROPOSED AERIAL  
SCALE 1:50

DIMENSIONS IN mm UNLESS OTHERWISE STATED © British Telecommunications plc 2015 DO NOT SCALE ORIGINAL SCALE AS SHOWN

AO  
A1  
DRN S.A.D  
CKD  
CERTIFICATION  
DESIGNER  
CLIENT  
A.MILLER  
DATE 27 09 2016

ANY MODIFICATION TO THE DRAWING OR THE USE OF ALTERNATIVE ITEMS TO THOSE SPECIFIED MUST BE AGREED WITH THE DESIGNER.

MATERIAL		A	LONDON TELECOM TOWER PROPOSAL FOR 1X 0.8M, DIAMETER DISH AND 3x 2.9M DIPOLE ARRAY AERIALS ON WEST FACE AT 167M LEVEL	REFERENCES
FINISH				
	AMENDMENT	ISSUE	BT TSO	UK RSDO   WL 4005107   SHT 03 OF 03