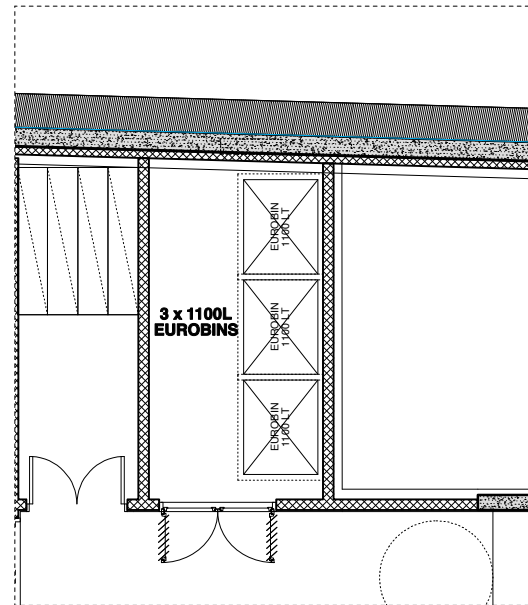


CPG1: CAMDEN PLANNING GUIDANCE DESIGN
LONDON BOROUGH OF CAMDEN

Figure 14. Amount of internal storage space required by the number of rooms in dwelling

Number of habitable rooms in dwelling	Capacity of external storage space required for that dwelling (for weekly collection)
1	0.15 m ³
2	0.20 m ³
3	0.25 m ³
4	0.30 m ³
5	0.35 m ³
6	0.40 m ³

NB: The figures include both recyclable and non-recyclable waste



REFUSE AND RECYCLING STORAGE CALCULATION (COMMERCIAL)

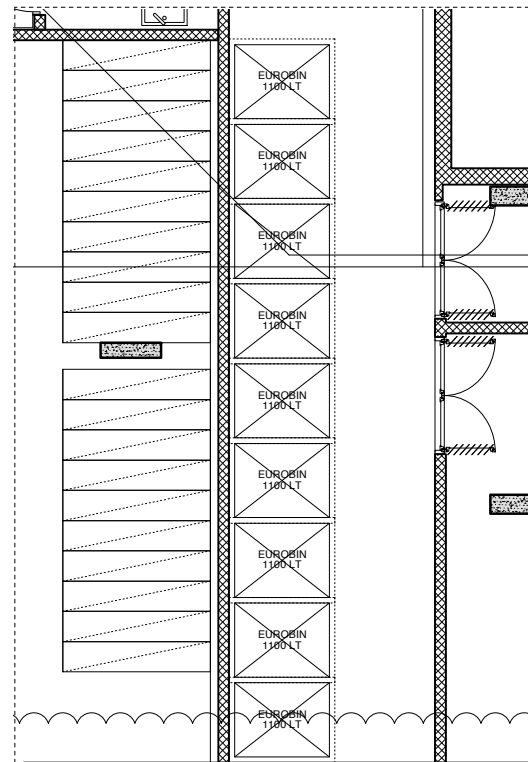
Capacity of refuse storage space required for Non-residential and Commercial Area
1m³ per 300-500m³ (As per CPG1 : Chapter 10.18)

Proposed Commercial Area = 596.8 sqm

We have shown **3 x 1100L Eurobins** (Dimensions H: 1075mm W: 580 D: 715)
Capacity per bin = 1.7m³

Total Capacity of refuse storage provided
= 1.7m³ x 3 bins
= **5.1m³ provided**

dE.01 Part Basement Floor Plan - Commercial Refuse/Recycling Storage
1:100@A3_1:50@A1



8 x 1100L EUROBINS

REFUSE AND RECYCLING CALCULATIONS (PRIVATE RESIDENTIAL)

Capacity of Refuse storage space required for Private Units
(Calculations as per CPG1 Fig. 14)

10 x 0.20 = 2.00m³

21 x 0.25 = 5.25 m³

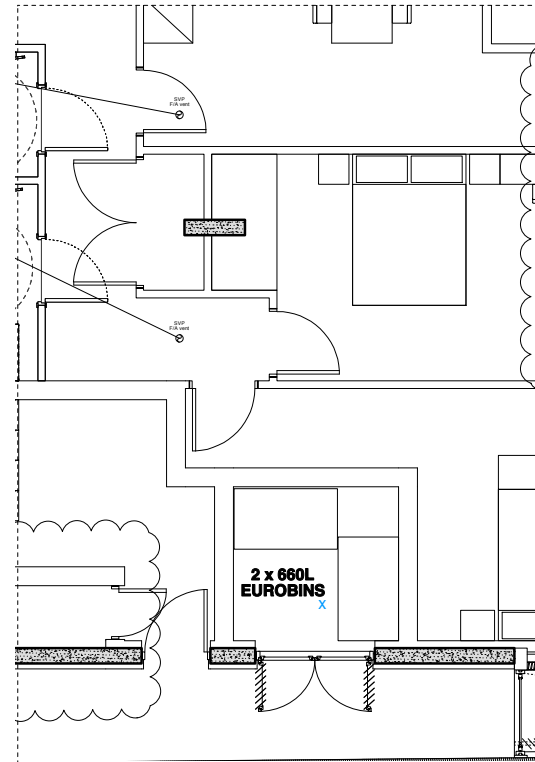
5 x 0.3 = 1.50 m³

Total = 8.75 m³

Have shown **8 x 1100L Eurobins**
(Dimensions- H: 1075mm W: 580 D: 715)
Capacity per bin = 1.7m³

Total Capacity of refuse storage provided
= 1.7m³ x 8 bins
= **13.6m³ provided**

dE.02 Part Basement Floor Plan - Residential Refuse/Recycling Storage (Private)
1:100@A3_1:50@A1



2 x 660L EUROBINS

REFUSE AND RECYCLING CALCULATIONS (AFFORDABLE RESIDENTIAL)

Capacity of external storage space required for Affordable Units
(Calculations as per CPG1 Fig. 14)

3 x 0.25 = 0.75 m³

1 x 0.3 = 0.30 m³

Total = 1.05 m³

Have shown **2 x 660L Eurobins** (Dimensions H: 1310mm W: 1260 D: 730)
Capacity per bin = 1.20m³

Total Capacity of refuse storage provided
= 1.20m³ (x 2 bins)
= **2.40m³ provided**

dE.03 Part Basement Floor Plan - Residential Refuse/Recycling Storage (Affordable)
1:100@A3_1:50@A1



Setting out and all G.A. drawings prepared from survey information provided by others.
All setting out must be checked on site.
All levels must be checked on site and refer to Ordnance Datum Newlyn unless alternative Datum given.
All fixings and weatherings must be checked on site.
All dimensions must be checked on site.
This drawing must not be scaled.
This drawing must be read in conjunction with the relevant specification clauses.
This drawing must not be used for land transfer purposes.
This drawing must not be used on site unless issued for construction.

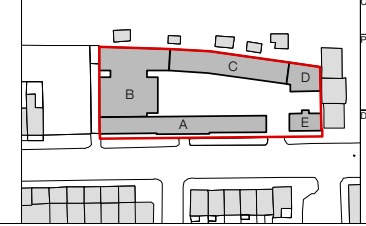
WARNING TO HOME BUYERS
Property Misdescriptions Act 1991
Buyers are warned that this is a working drawing and not intended to be treated as descriptive material describing in relation to any particular property or development, any of the specified matters prescribed by any order and under the above act. The contents of this drawing may be subject to change at any time and alterations and variations can occur, during the progress of the works without revision of the drawing. Consequently the layout, form, content and dimensions of the finished construction may differ materially from those shown. Nor do the contents of this drawing constitute a contract, part of any contract or warranty.

LEGEND:
S - Sheffield Stands
DS - Double Stacker Cycle Rack
Total S - 3 external bikes (commercial)

Information contained within this drawing is the sole copyright of 21st Architecture Ltd. and is not to be reproduced without express permission. No implied licence exists. This drawing not to be used for land transfer or valuation purposes. Do not scale from this drawing. All dimensions & levels are to be checked on site by the contractor. Issued for purposes indicated only. Drawing errors and omissions to be reported to the architect.

THIS IS A DESIGN INTENT DRAWING. SUB-CONTRACTOR / SUPPLIERS DETAILED DRAWINGS AND SPECIFICATIONS TO BE SUBMITTED FOR DESIGN TEAM INFORMATION AND/OR COMMENT

* Revised Planning Issue - Compliance Condition No. 04 31.08.16



Client
Victoria Square Property Company Limited
Project
44 Gloucester Avenue
London NW1 8JD
Drawing Title
Planning Condition 04
Commercial & Residential Refuse/Cycle Storage

<p>21st Architecture Ltd. 314 Goswell Road, London, EC1V 7AF Tel: +44(0)20 7982 0282 www.21starchitecture.com</p>		
Status Tender	Drawn TJS	Checked TJS
Scale 1:100 @ A1, 1:200 @ A3	Date April 2016	Revision
Drwg. No. 173_PL_COND_04_03		