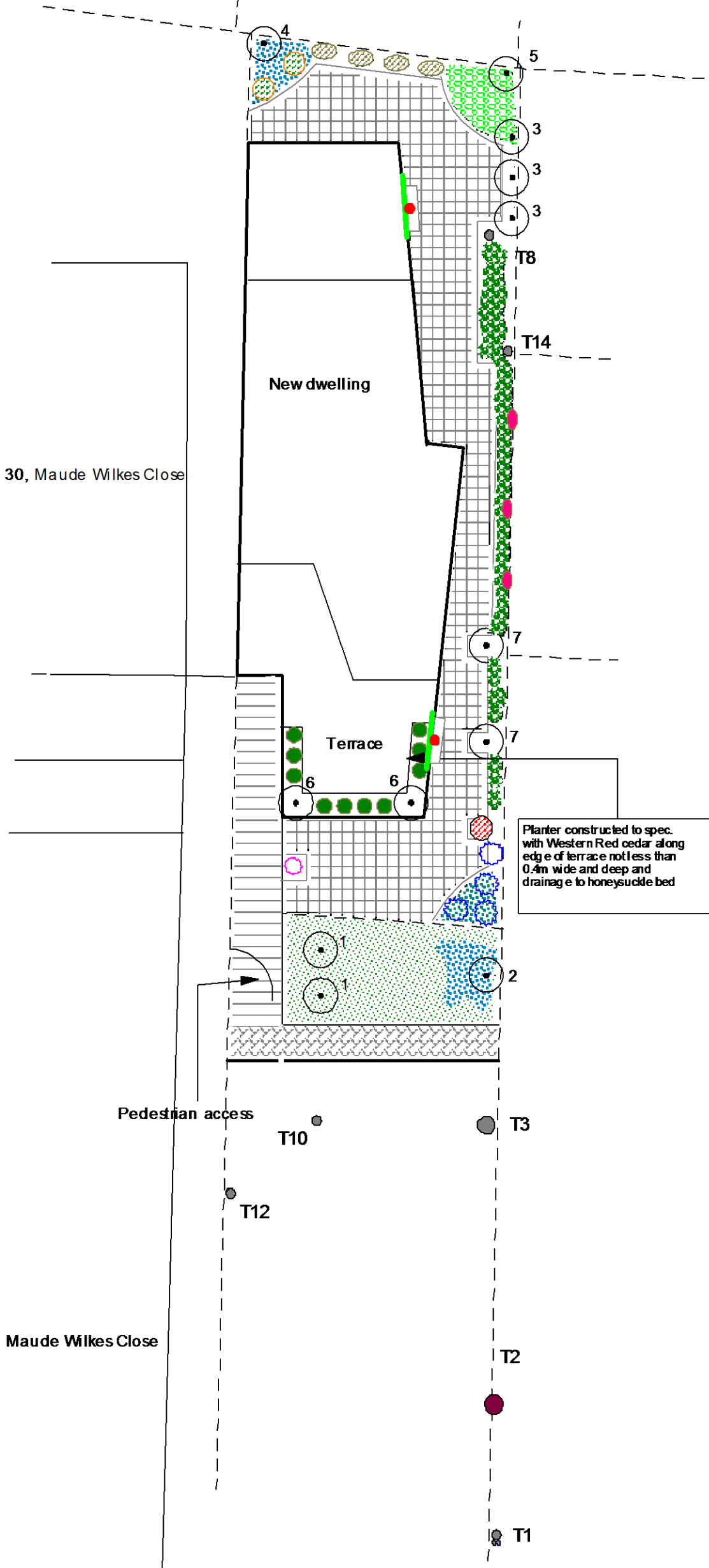


- 1) Plants to comply with BS 3936 (1992)
- 2) Landscape operations to comply with BS 4426 (1989) & BS 8545 (2014)
- 3) Soils to comply with BS 3882 (2015)



Trees 12-14 cm Standard

- 1 Prunus x subhirtella "Autumnalis"
- 2 Sorbus torminalis
- 3 Ilex aquifolium
- 4 Betula pendula
- 5 Gleditsia triacanthos
- 6 Olea europaea
- 7 Pyrus communis

Shrubs/Herbaceous

- Choisya ternata
- Mahonia x media "Charity"
- Buddleja x weyeriana
- Daphne odora Aureo-marginata
- Sarcococca hookeriana @ 3/m².
- Ceanothus "Autumnal Blue."
- Lavendula angustifolia "Hidcote" @ 5/m
- Hydrangea petiolaris
- Lonicera periclymenum

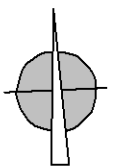
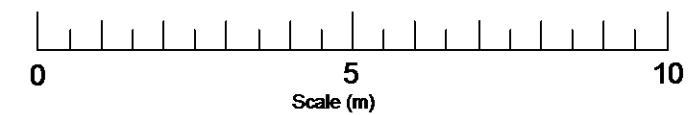
**Shrubs 5L
Herbaceous 1L**

Area planting

- Helleborus orientalis @4/m², Bergenia cordifolia @ 5/m², Anemone blanda @ 50/m²
- Bulb mix at 40/m to include Galanthus nivalis, Crocus, Scilla sp., Chinodoxa sp., Puschkina sp., Narcissus sp. & Hyacinthoides non-scripta

Natural sandstone flags with drainage into side bed

Trellis



OMC ASSOCIATES		
T: 01223842253 www.omc-associates.co.uk		
SITE:	R/O 27 Leighton Road, London, NW5	
OUR REF:	01073SL	
CLIENT REF:		
SCALE:	1:200 on (on A3 -Subject to pdf distortion)	
DATE:	20 September 2016	
Soft Landscape Plan		