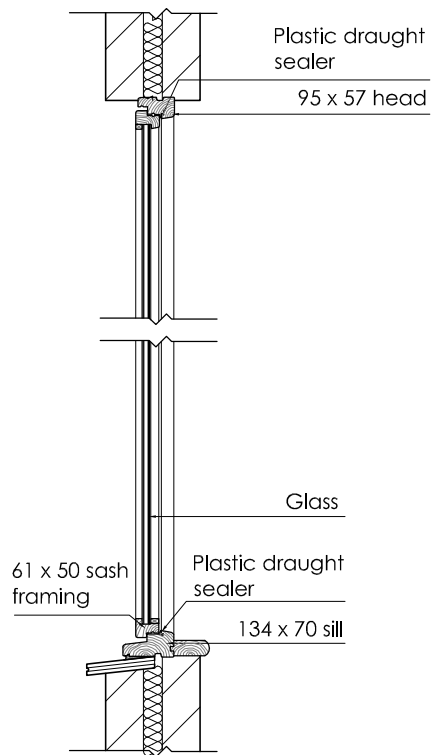
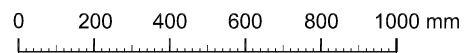


**Existing Typical  
Window Section**



**Proposed Typical  
Window Section**



SCALE BAR 1:20

**judd.** architecture ltd.

architecture - services - interior design

10 Tonbridge Road, Barming, Maidstone, Kent.  
ME16 9NH

simon@jas-ltd.com  
tel: 01622 726 729

project:  
drawing title:  
scale:  
size:  
date:

**The Lodge, 10 Ladywell Court**  
**Existing & Proposed Typical Window Sections**  
**1:20**  
**A4**  
**October 2016**

drawn: **MS**  
job ref: **147**  
dwg no.: **115**  
rev.: **-**