

1 No. Projecting Sign
Scale 1:10

50 x 50 x 3mm brushed stainless steel bracket

2 No. Ecolux trough lights at a 200mm projection, to match PMS 186c.

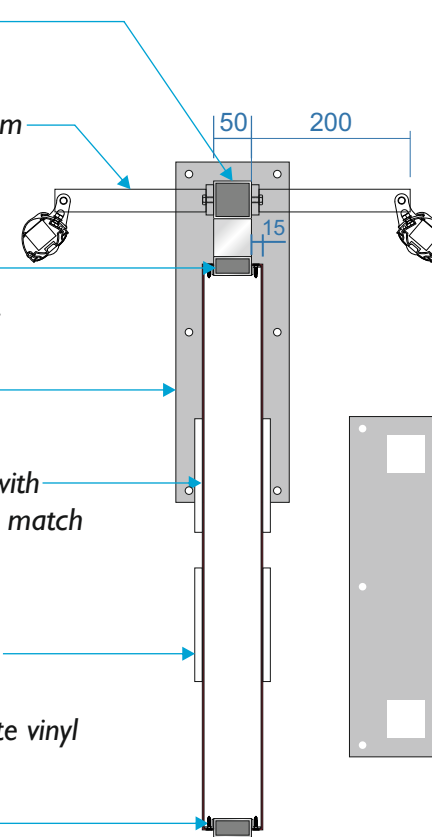
50 x 25 x 3mm brushed stainless steel internal support frame.

Brushed stainless steel bracket

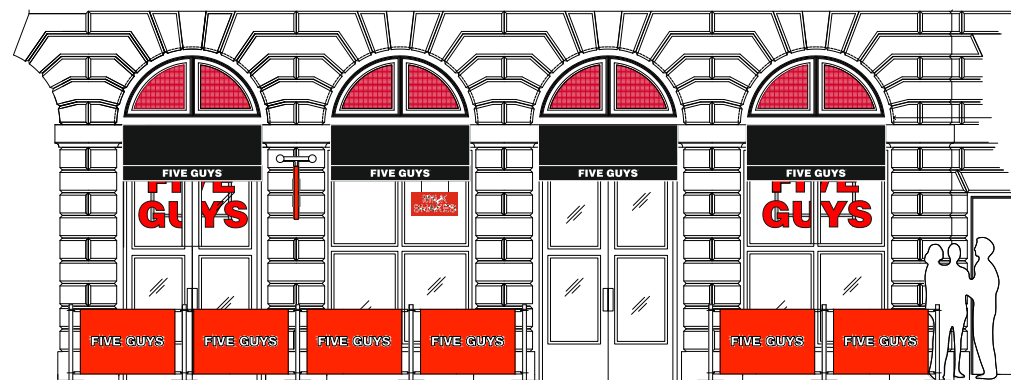
2 No. 2mm aluminium lids complete with 15mm returns all around, finished to match PMS 186c.

Text to be cut from 10mm Opal 069 acrylic and bonded to tin lids.
Registration mark to be cut from white vinyl

Tin lids to be fixed to framework using 12 x 12mm aluminium angles.



Projecting Sign
Scale 1:10



Proposed Elevations
Scale 1:100



Proposed Elevation without café barriers or shop blinds
Scale 1:100

Client: Five Guys - Tottenham Court Road		
Description: Externally Illuminated Projecting Signs		
Drawn By: M. Mannix	Checked By: J.McBride	Date: 05.08.2016
Drawing No: MM-0816-50	Status: For Approval	Scale: A/S @A3
Revisions:		
A	31.08.16	Revised projecting sign position
B	20.10.16	Removal of arched sign
C	00.00.14	
D	00.00.14	
E	00.00.14	
		PREFERRED FORMATS: OTHER FORMATS: CorelDRAW X5 .cdr Adobe Acrobat .pdf Adobe Illustrator CS3 .ai Adobe Photoshop CS3 .psd Encapsulated Post Script .eps AutoCAD 2007 .dwg/.dxf
Bestwood Road Bulwell Nottingham NG6 8SS Tel: 0115 976 1188 Fax: 0115 976 1213		
<small>WE REQUIRE VECTOR GRAPHICS (LINES AND CURVES WITH FONTS BROKEN APART) FOR CUTTING / MANUFACTURE OR HIGH RES IMAGES FOR DIGITAL PRINTING. PLEASE SUPPLY ANY COLOUR REFERENCES, FONTS AND ARTWORK GUIDELINES. ARTWORK DEVELOPMENT, RE-GENERATION OR CONVERSION MAY INCUR ADDITIONAL COST.</small>		