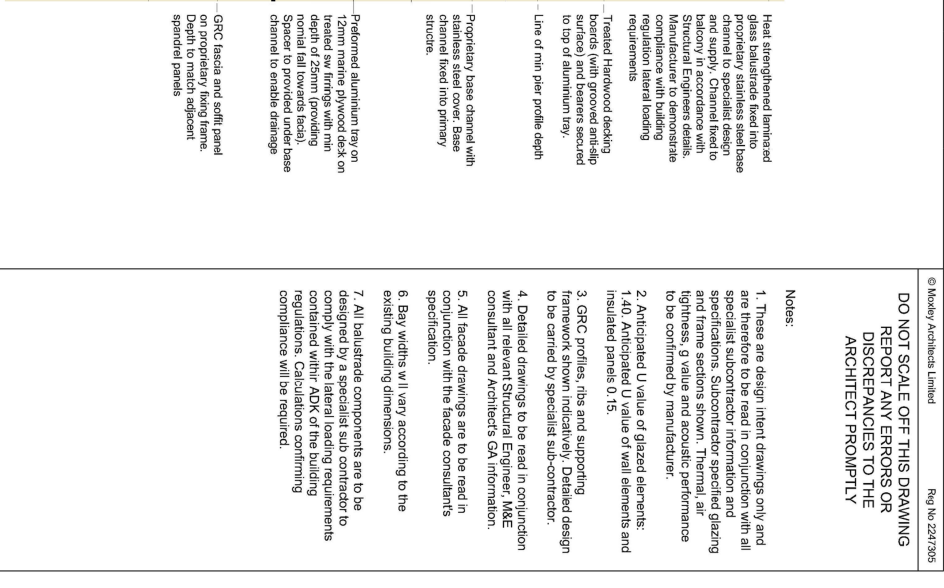
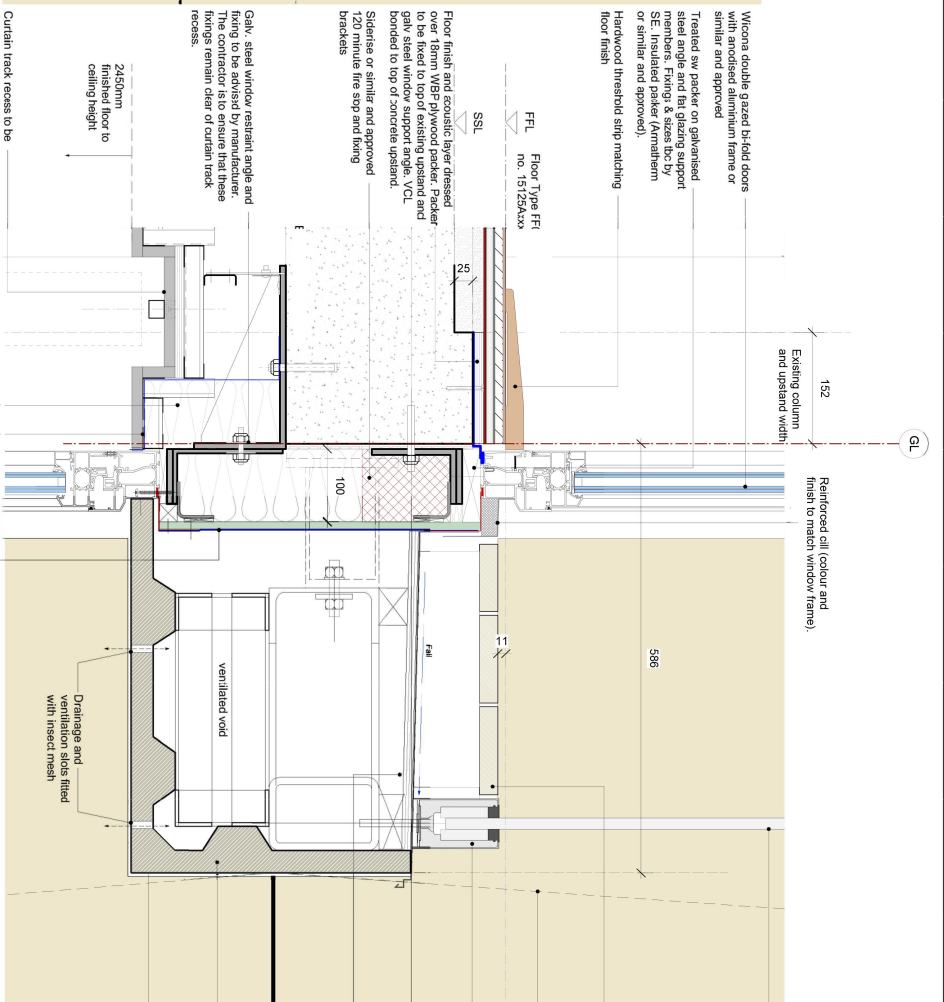
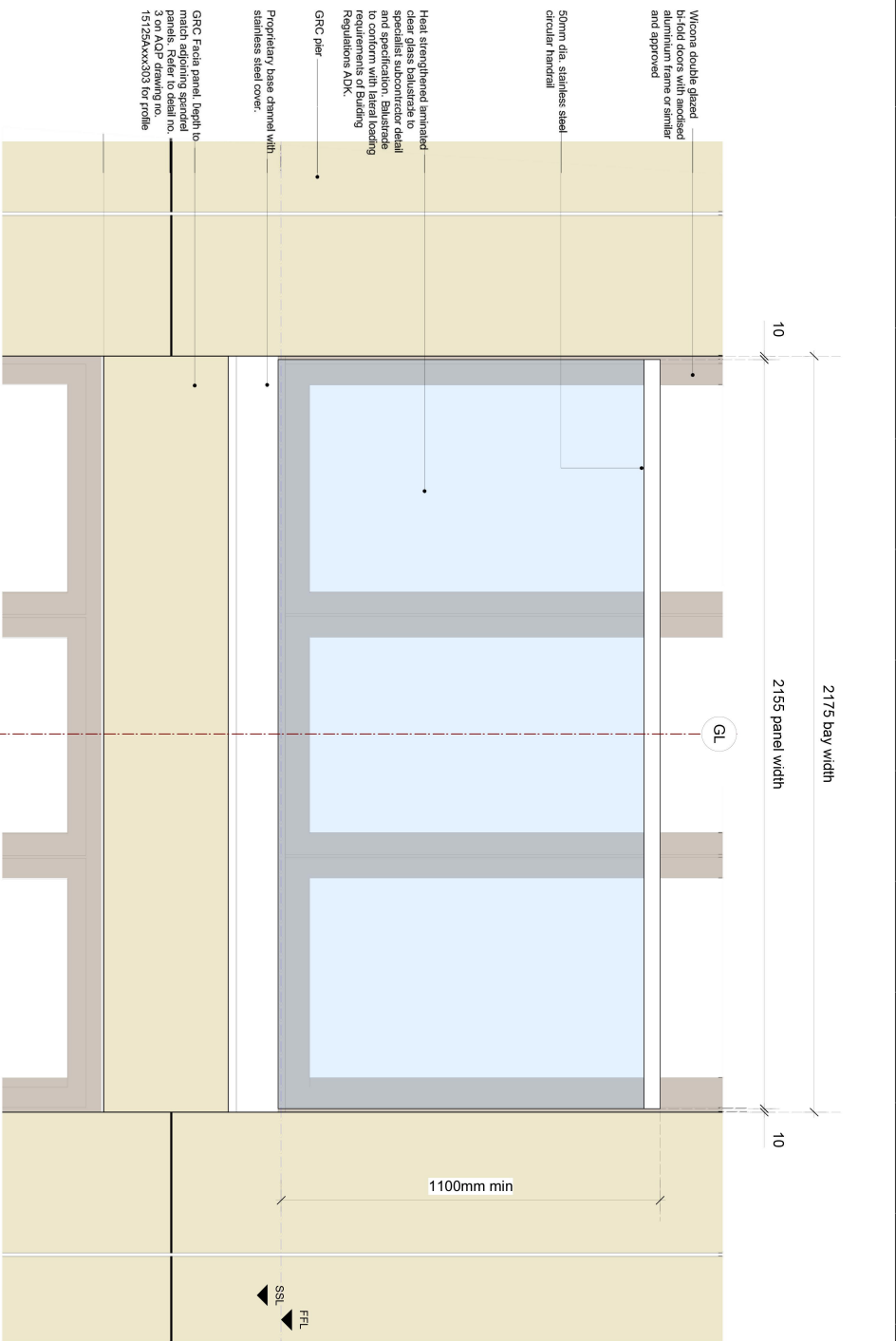


**DO NOT SCALE OFF THIS DRAWING**  
**REPORT ANY ERRORS OR**  
**DISCREPANCIES TO THE**  
**ARCHITECT PROMPTLY**

**Notes:**

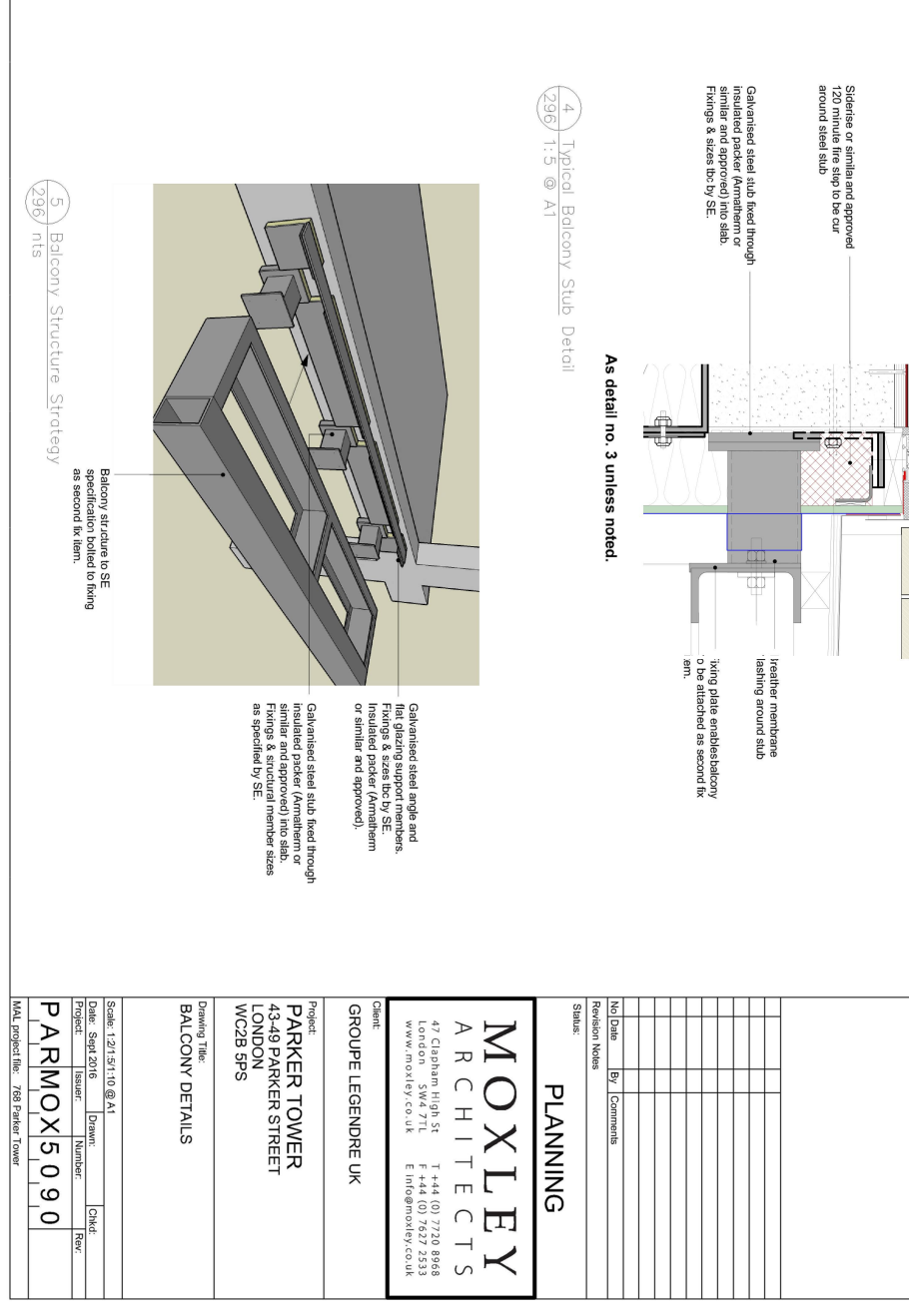
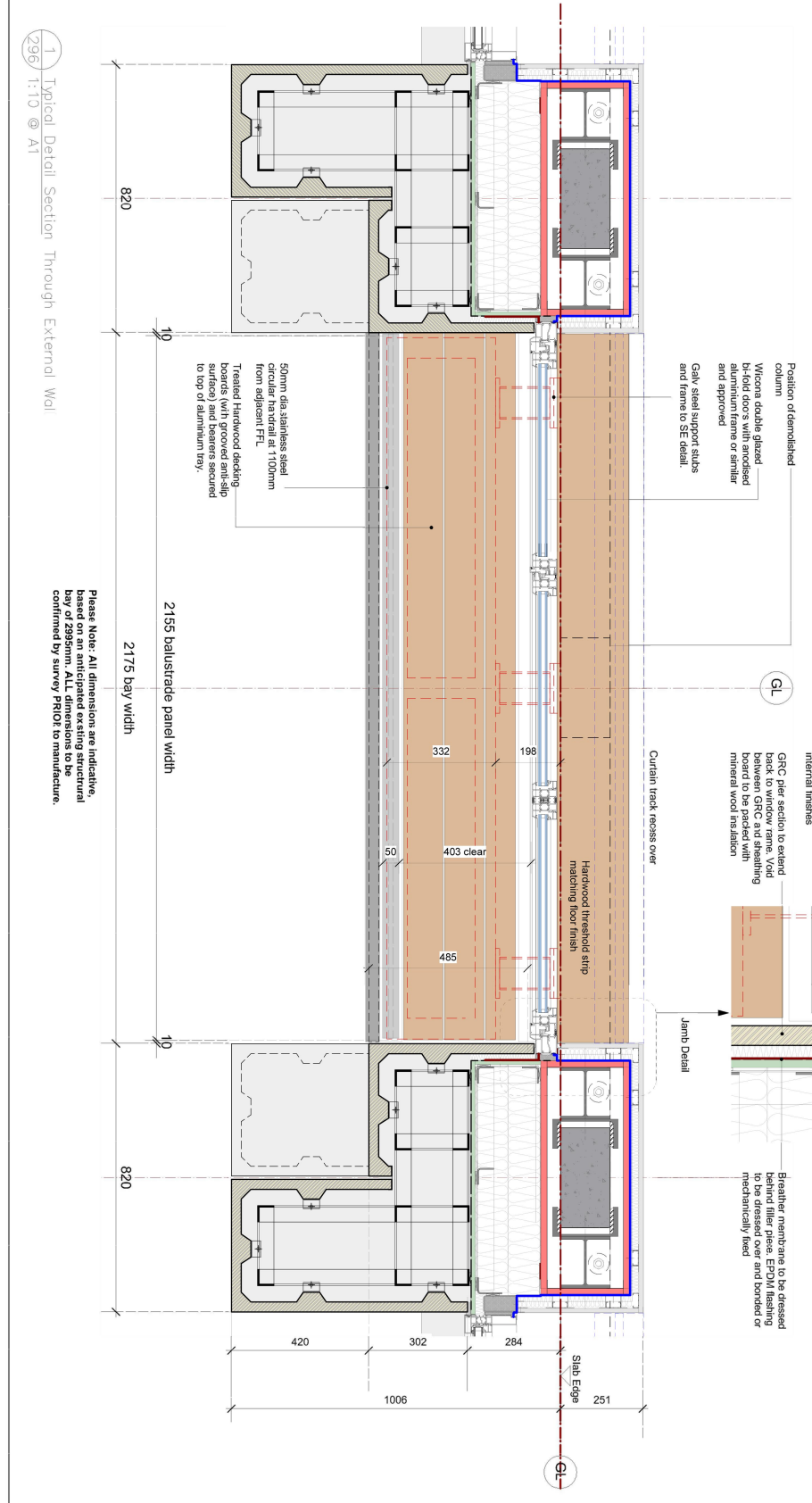
1. These are design intent drawings only and are therefore to be read in conjunction with all specialist subcontractor information and specifications. Subcontractor specified glazing heights, g value and acoustic performance to be confirmed by manufacturer.
2. Anticipated U value of glazed elements and insulated panels 0.15.
3. GRC profiles, ribs and supporting framework shown indicatively. Detailed design to be carried by specialist sub-contractor.
4. Detailed drawings to be read in conjunction with all relevant Structural Engineer, M&E consultant and Architects CA information.
5. All facade drawings are to be read in conjunction with the facade consultants specification.
6. Bay widths will vary according to the existing building dimensions.
7. All balustrade components are to be detailed in accordance with the relevant regulations, conformed with the lateral loading requirements contained within ADK of the building regulations. Calculations confirming compliance will be required.



1 Typical Balcony Elevation  
1:10 @ A1

2 Typical Handrail Detail  
1:2 @ A1

3 Typical Balcony Slab Detail  
1:5 @ A1



**PLANNING**

**MOXLEY ARCHITECTS**  
 47 Clapham High St London SW4 7TL  
 T +44 (0) 7720 8968 F +44 (0) 7627 2533  
 www.moxley.co.uk E info@moxley.co.uk

**GROUPE LEGENDRE UK**

**PARKER TOWER**  
 43-49 PARKER STREET  
 LONDON WC2B 6PS

**BALCONY DETAILS**

No.	Date	By	Comments

Scale: 1:21.5:11.0 @ A1  
 Date: Sept 2016  
 Project: PARKMOX5090  
 Issued: Number: 090  
 Drawn: Number: 090  
 Checked: Number: 090  
 Rev: 090

Full project file: 788 Parker Tower

Please Note: All dimensions are indicative, based on an anticipated existing structural bay of 2095mm. ALL dimensions to be confirmed by survey PRIOR to manufacture.