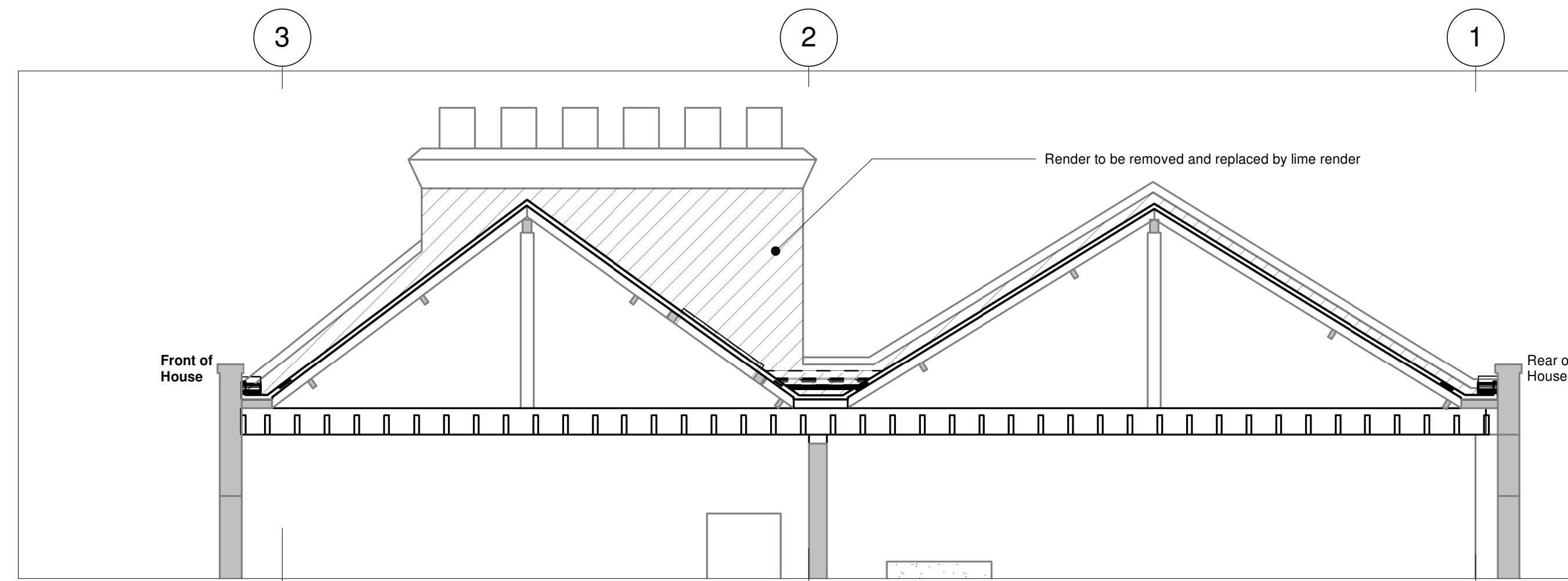
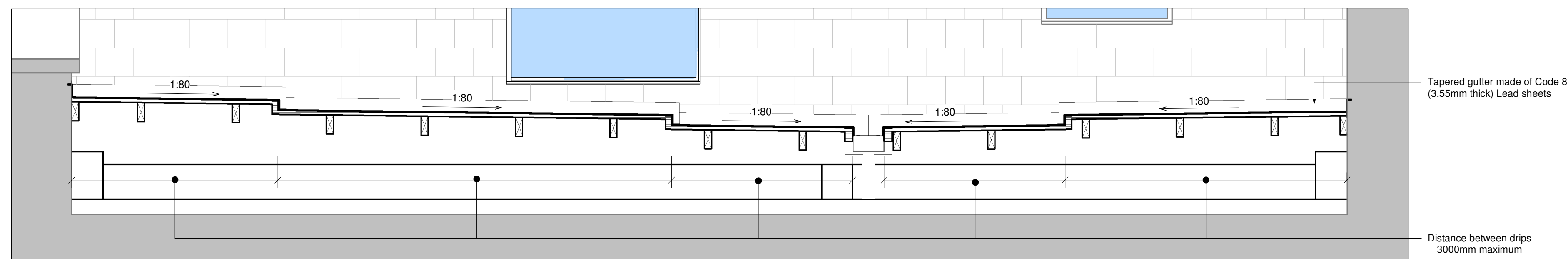


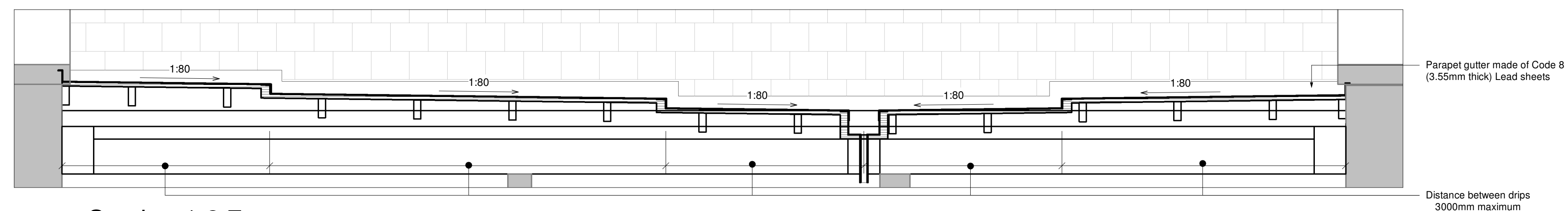
1 Section Looking North
1 : 50



2 Section Looking South
1 : 50



6 Section 1.2.6
1 : 20



7 Section 1.2.7
1 : 20

All areas of new render shall be as the following specification:

1. Mortar for replacement render to comprise 3No. layers; an initial "Render Coat" applied to brickwork, a "Floating Coat", and a "Finish Coat". All Coats to comprise:
 - 1 part mature non-hydraulic lime (NHL2 grade).
 - 2 parts well graded sand.
 - 5 Kgs of hair per cubic metre, 3 Kgs per cubic metre in second coat, and no hair in finish coat.
3. Existing brickwork to be damp before application of bottom coat, and first coat to be applied diagonally across brick courses with a steel trowel, and with enough pressure to push mortar into gaps between bricks, and with a uniform thickness. Once the first coat has become firm, keying scratches need to be applied to assist bonding of second coat.
4. Each layer of render should be protected with damp Hessian or similar, and be kept damp throughout curing. When the preceding layer is firm to touch, but can be marked with a fingernail, then the next coat can be applied. The final coat will need to be protected for up to 3 weeks.
5. No more than 20 mm thickness of render should be applied in a single layer/coat, and the overall thickness should be 30 mm on face of lath. The second coat should be applied with a wood or polyurethane float to achieve an "open texture".
6. Render thickness should be finished with a 20 mm thick gradual flare at base of wall over flashings, and bottom edge finished with half round recessed drip profile.

Notes
 G.1 This drawing is to be read in conjunction with all relevant Architect's and Engineer's drawings and specifications.
 G.2 Do not scale from a paper or digital version of this drawing. Use written or stated dimension only.
 G.3 For general notes refer to drawing 15/137/1.2
 This drawing is the copyright of Barton Engineers & may not be copied, altered or reproduced in any way or passed to a third party without their written authority.
 Status

Preliminary

Not for Construction or Tenders

Issues / Revisions		
P1	Issued for Coordination	140916 WK
P2	Issued for Coordination	111016 WK

Barton Engineers

Unit 303 Westbourne Studios, 242 Acklam Road, London W10 5JJ
 telephone +44(0)20 7631 0348
 mail@bartonengineers.co.uk
 http://www.bartonengineers.co.uk

Project
27 Russell Square

Title
Roof Sections And Details

Scales
 1:50 1:20 1:10

Designed by
Bob Barton
 Drawn by
Waldemar Kurpias
 Drawing number
15/137/1.2

Checked by
Bob Barton
 Rev
P2