

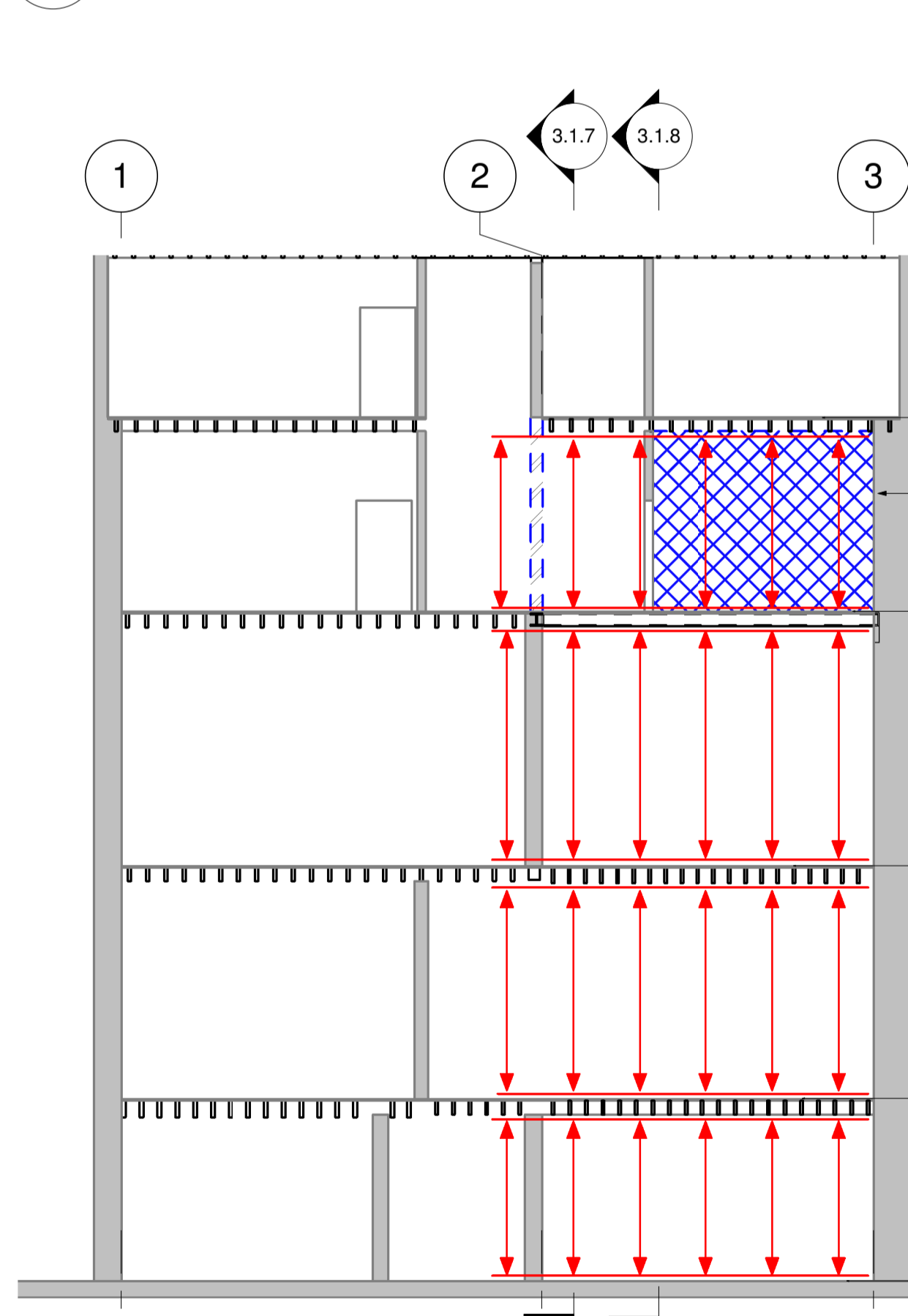
1 Basement Level Plan  
1 : 100

2 Ground Floor Level Plan  
1 : 100

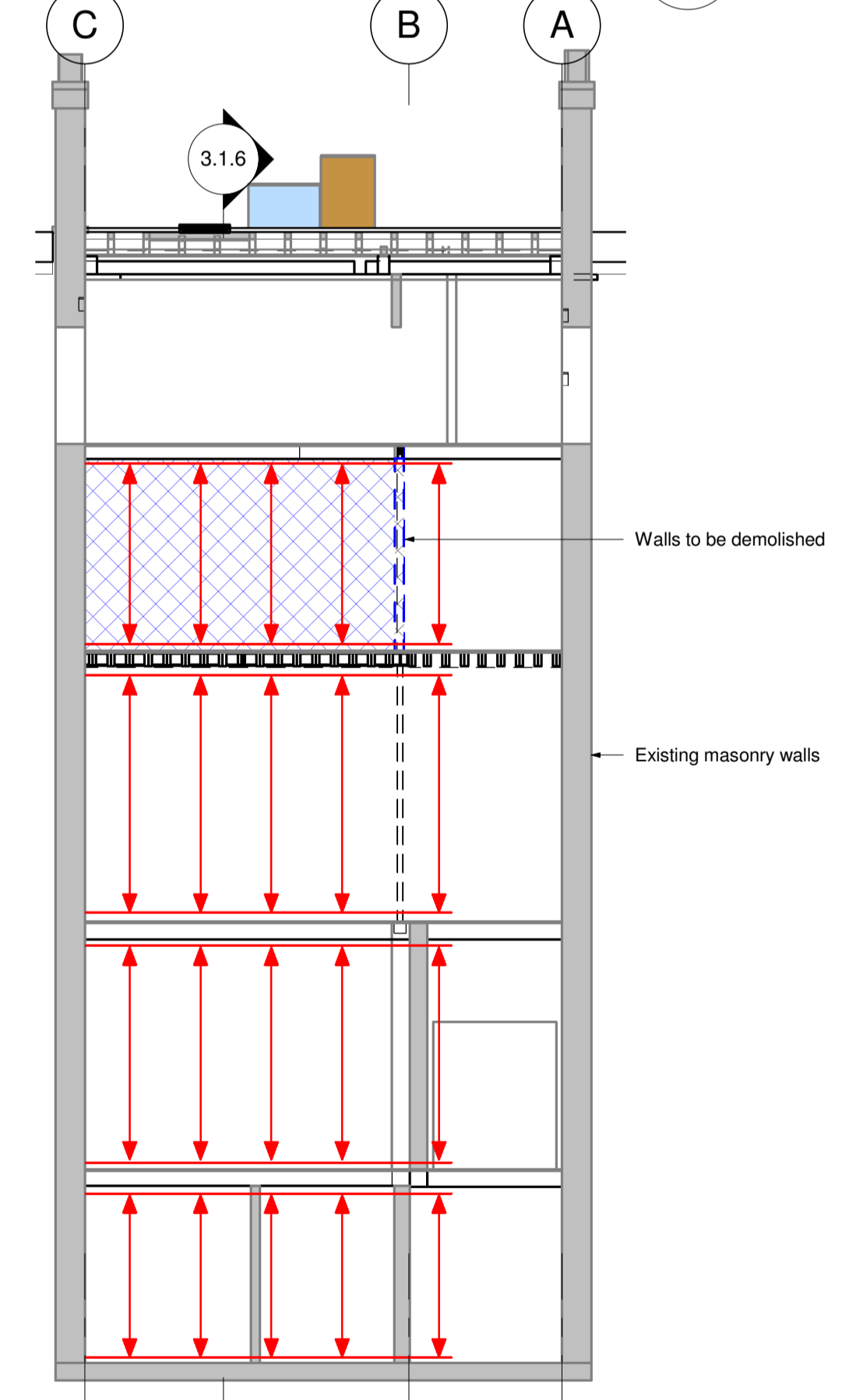
3 First Floor Level Plan  
1 : 100

4 Second Floor Level Plan  
1 : 100

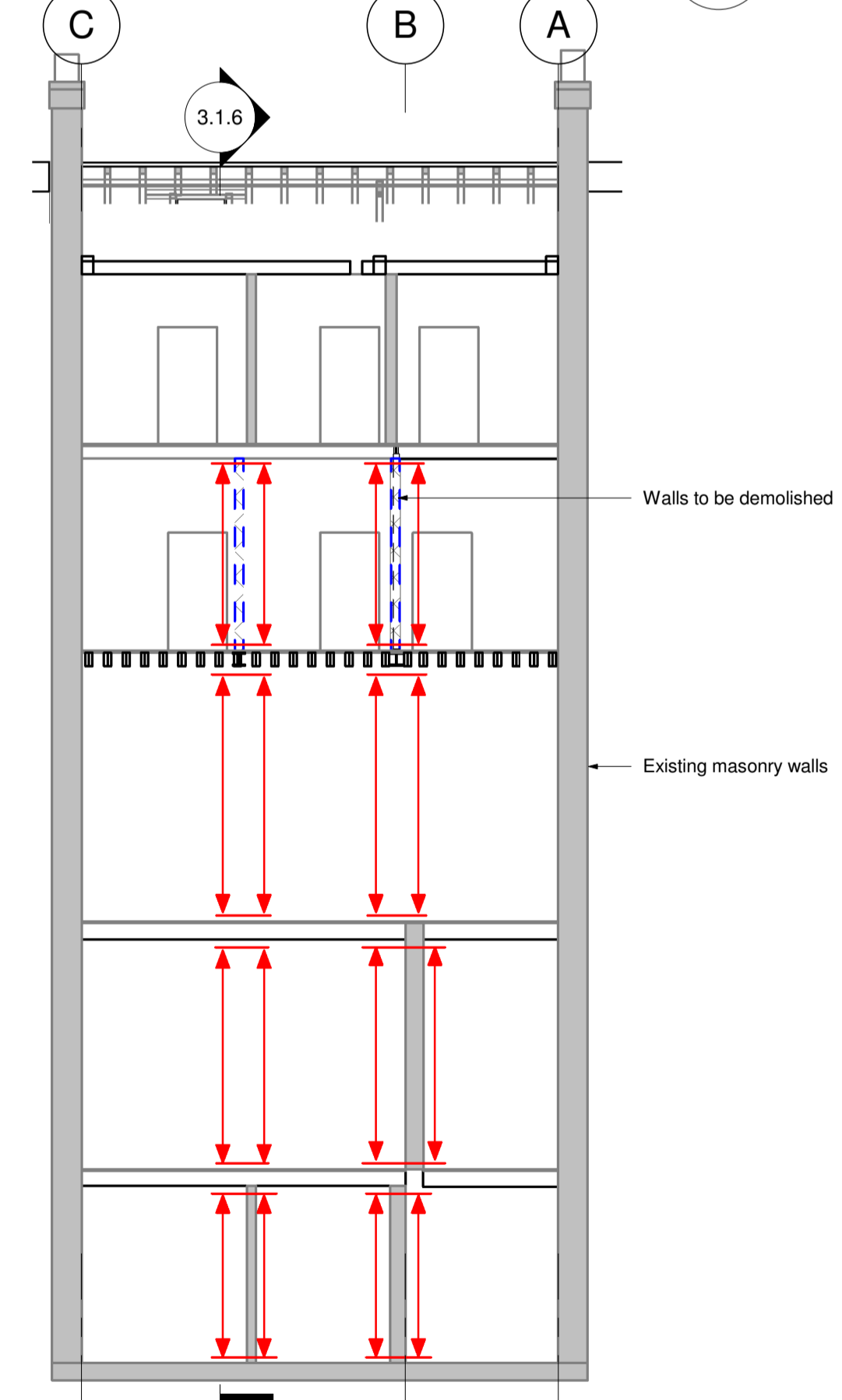
5 Third Floor Level Plan  
1 : 100



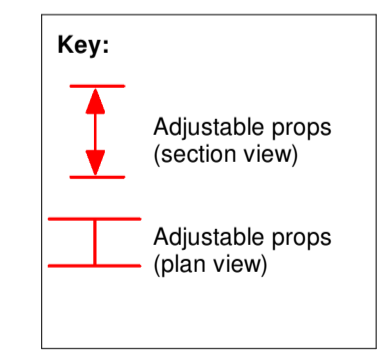
6 Section 3.1.6  
1 : 100



7 Section 3.1.7  
1 : 100



8 Section 3.1.8  
1 : 100



- Sequence of Temporary Works:**
1. Prop the partition walls and floor at third floor level from basement level. Props are to be positioned either side of the walls with timber needles to carry the load so that the partition walls at the second floor level can be removed.
  2. Remove the partition walls at second floor level.
  3. Install the new beams and columns, and resupport the existing joists onto the new beams.
  4. Reinstall the partition walls at second floor level.
  5. Remove the temporary works.

**Notes**  
 G.1 This drawing is to be read in conjunction with all relevant Architect's and Engineer's drawings and specifications.  
 G.2 Do not scale from a paper or digital version of this drawing. Use written or stated dimension only.  
 G.3 For general notes refer to drawing 15/137/1.2  
 This drawing is the copyright of Barton Engineers & may not be copied, altered or reproduced in any way or passed to a third party without their written authority.  
 Status

**Preliminary**  
 Not for Construction or Tenders  
 Issues / Revisions  
 P1 Issued for Coordination 140916 WK

**Barton Engineers**  
 Unit 303 Westbourne Studios, 242 Aclam Road, London W10 5JJ  
 telephone +44(0)20 7631 0348  
 mail@bartonengineers.co.uk  
 http://www.bartonengineers.co.uk

Project  
**27 Russell Square**

Title  
**Temporary Works Drawings**

Scales  
 1:100

Designed by  
 Rosie Stevenson  
 Drawn by  
 Waldemar Kurpias  
 Drawing number  
**15/137/3.1**  
 Checked by  
 Bob Barton  
 Rev  
**P1**