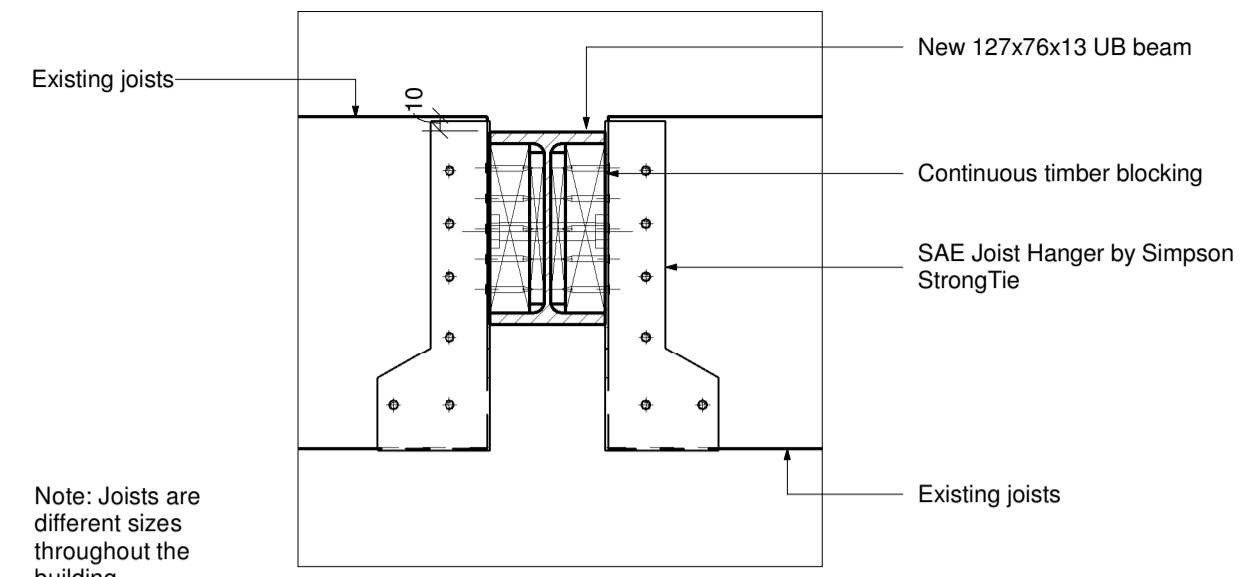
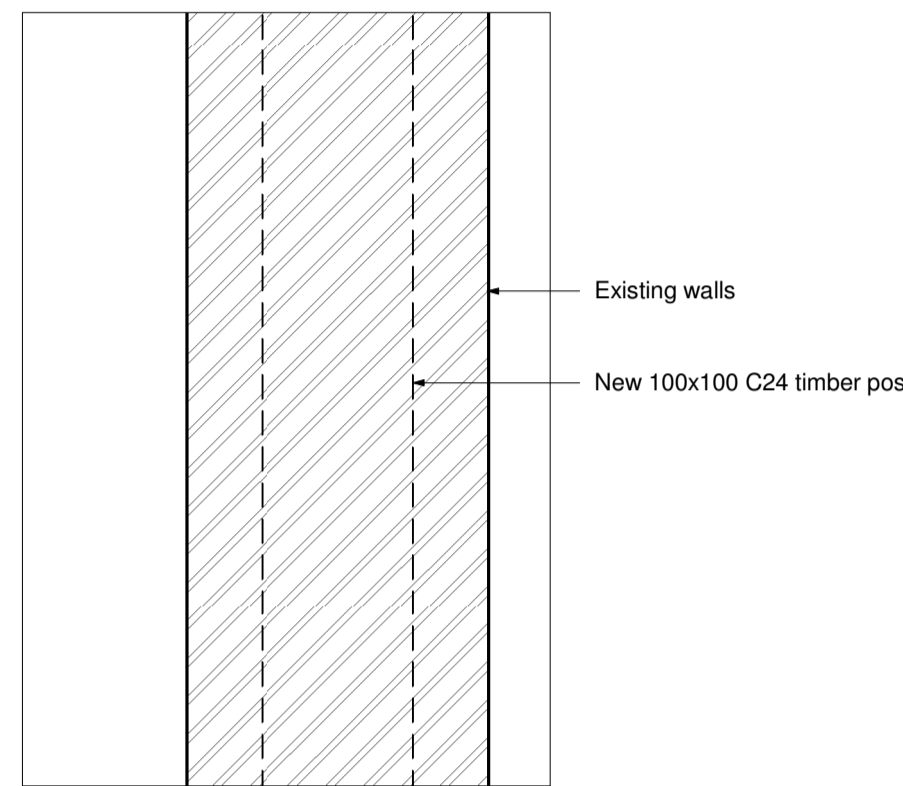
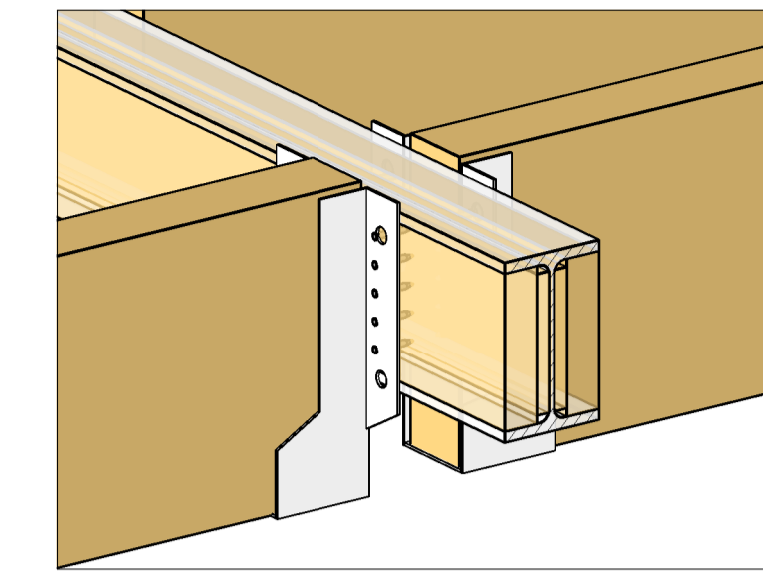


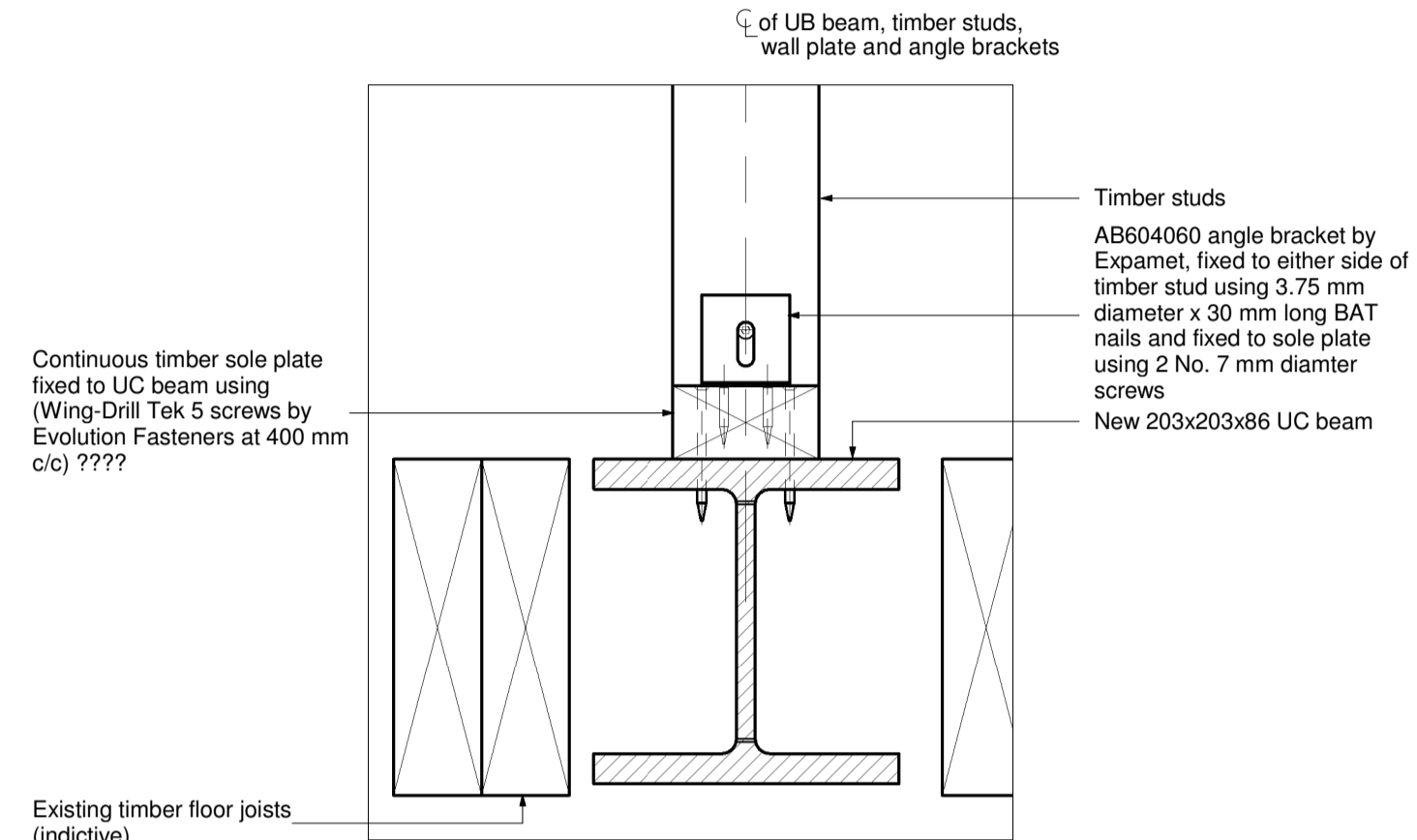
**1 Steel Beam to Timber Post**  
1 : 5



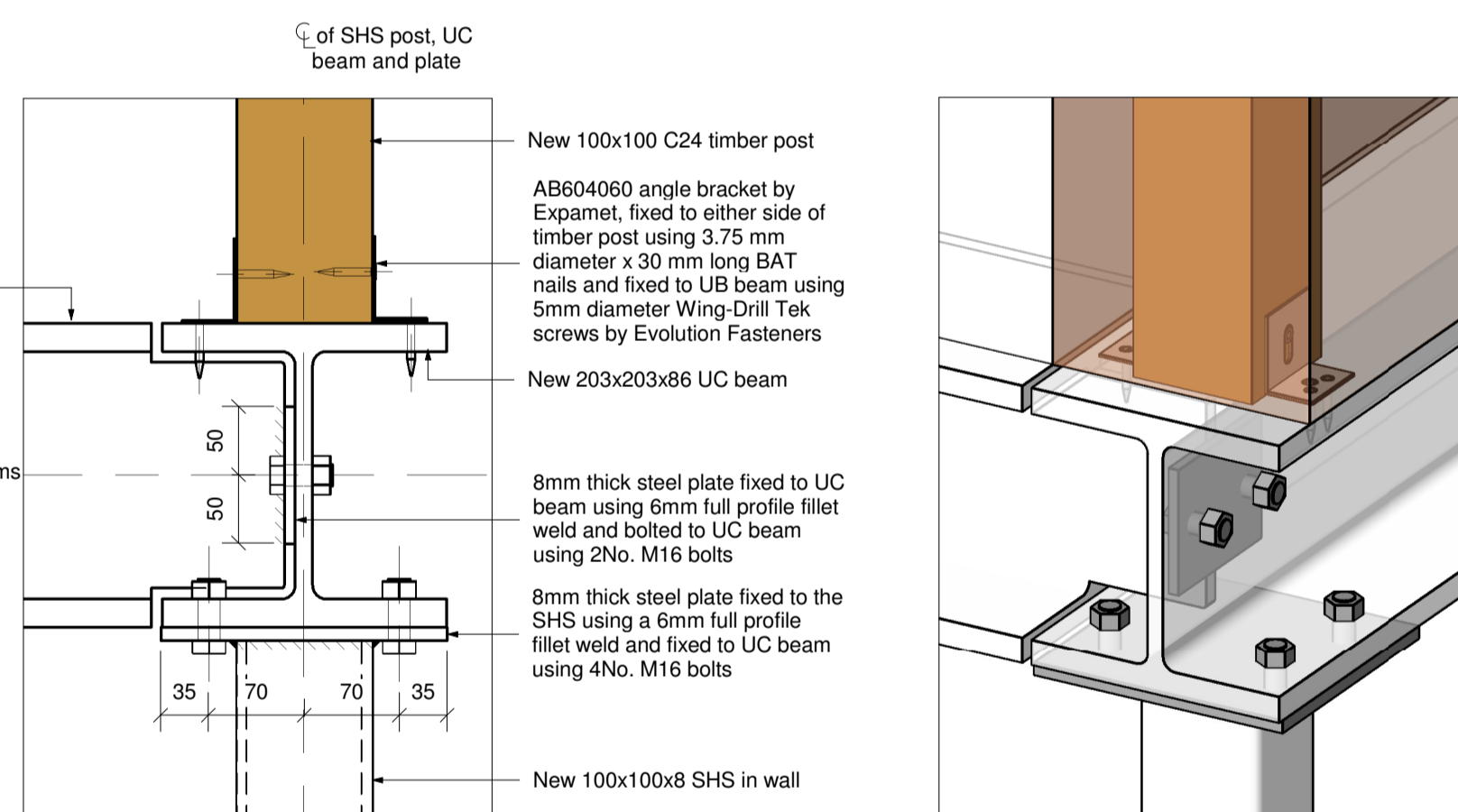
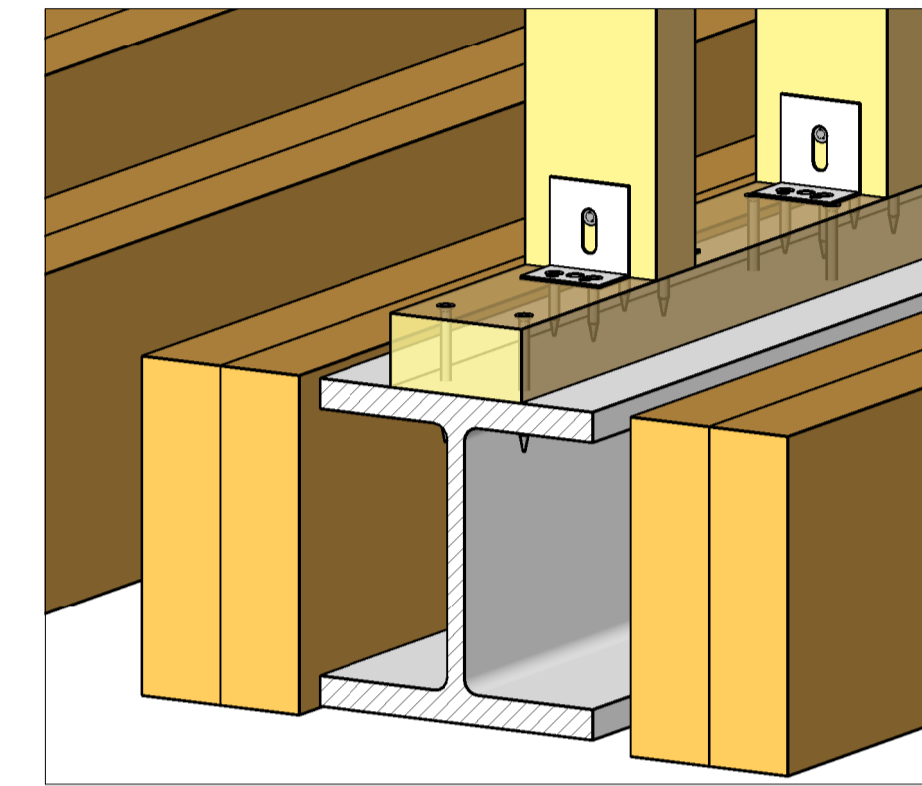
**2 Steel Beam to Existing Joist Detail**  
1 : 5



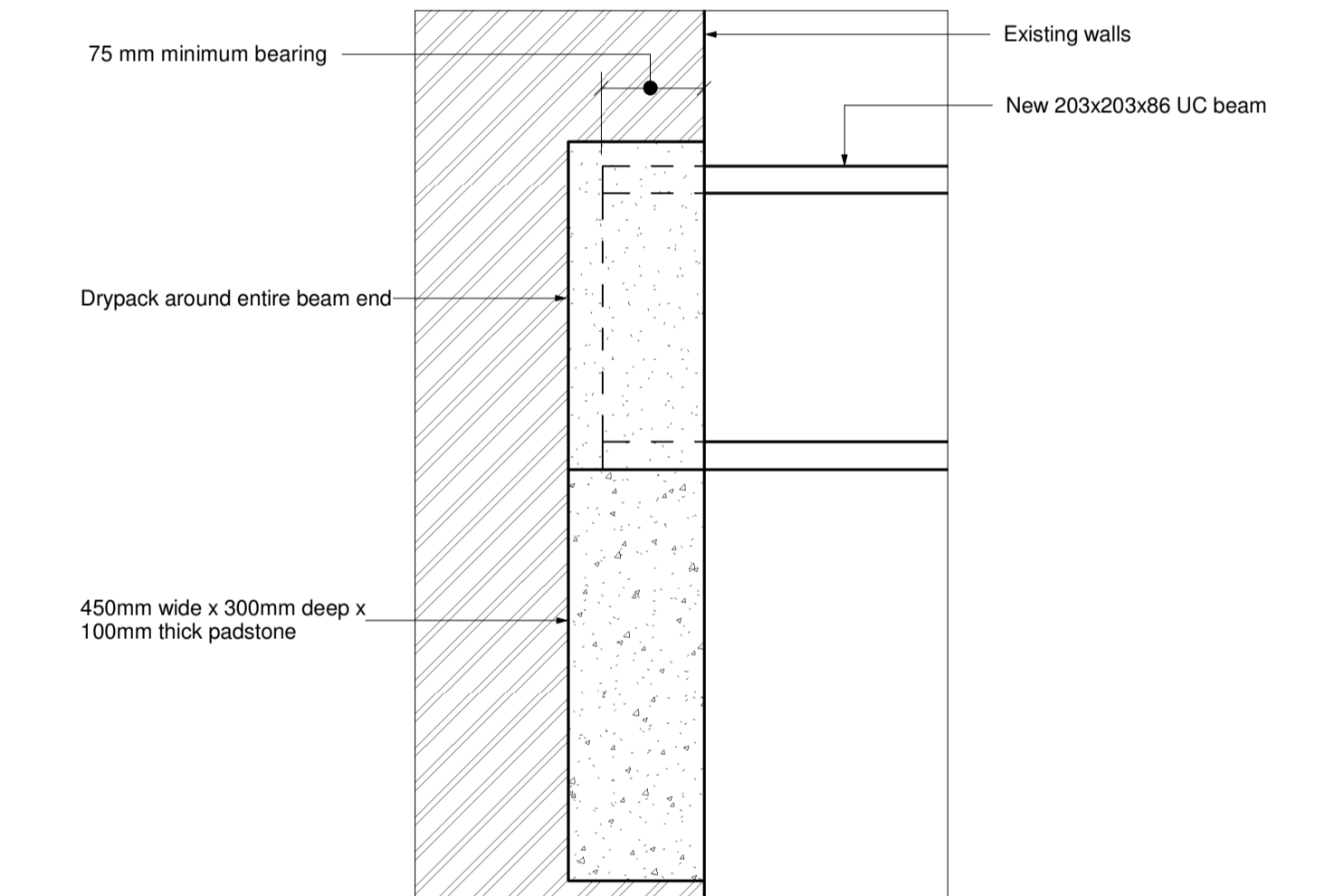
**3 Timber Post to Masonry Connection**  
1 : 5



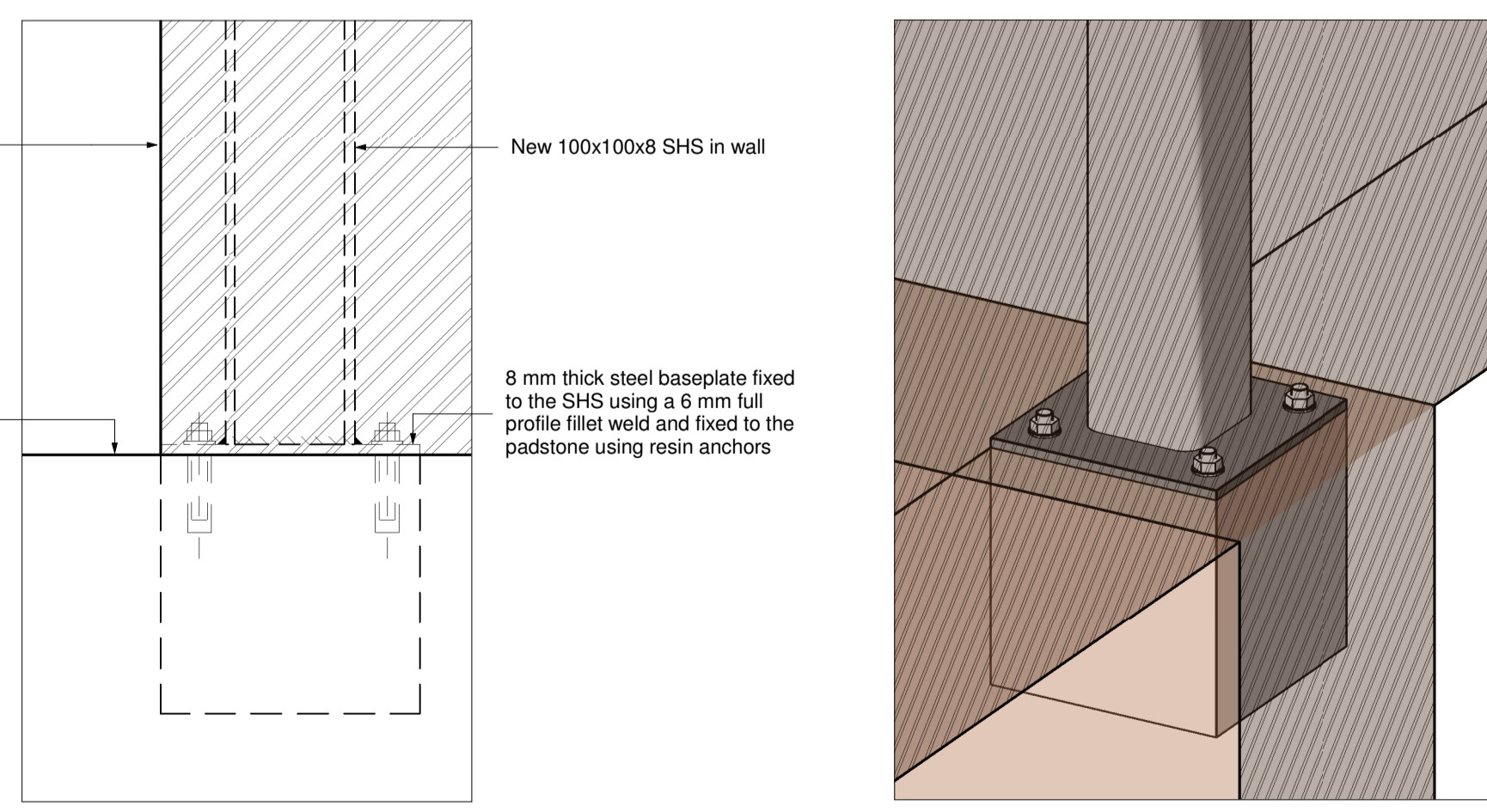
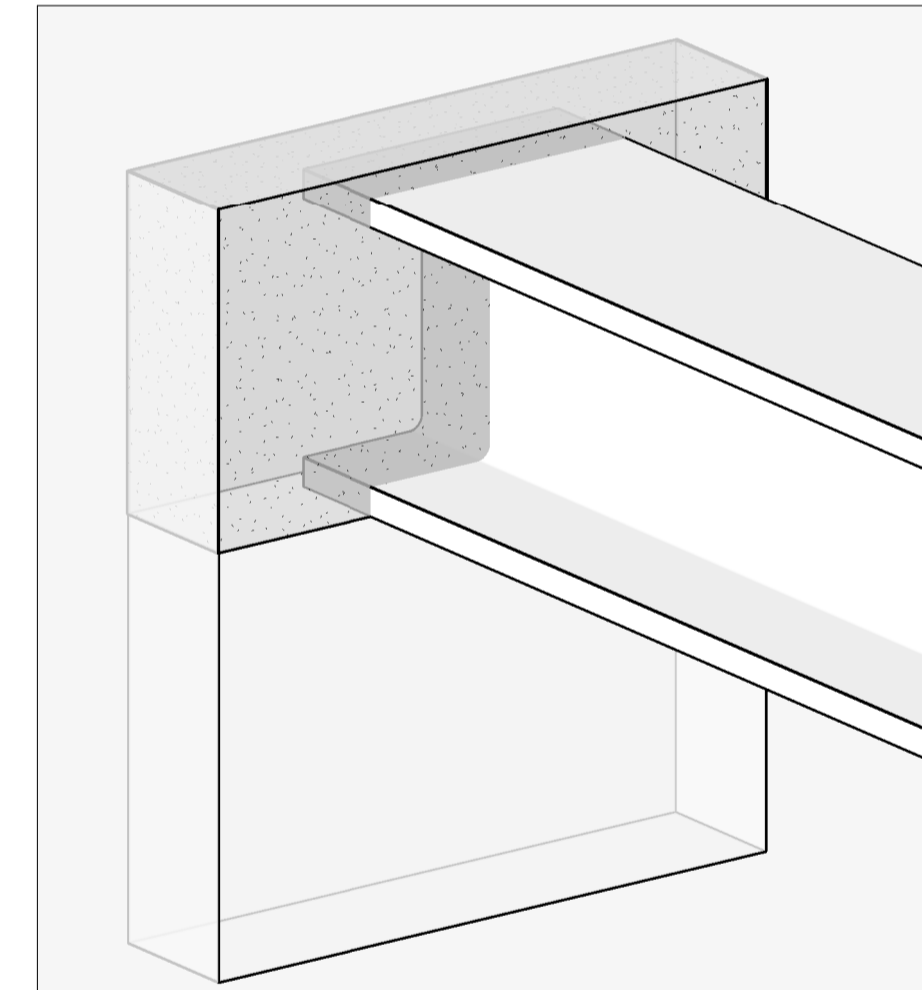
**4 Steel Beam to Studwork Wall**  
1 : 5



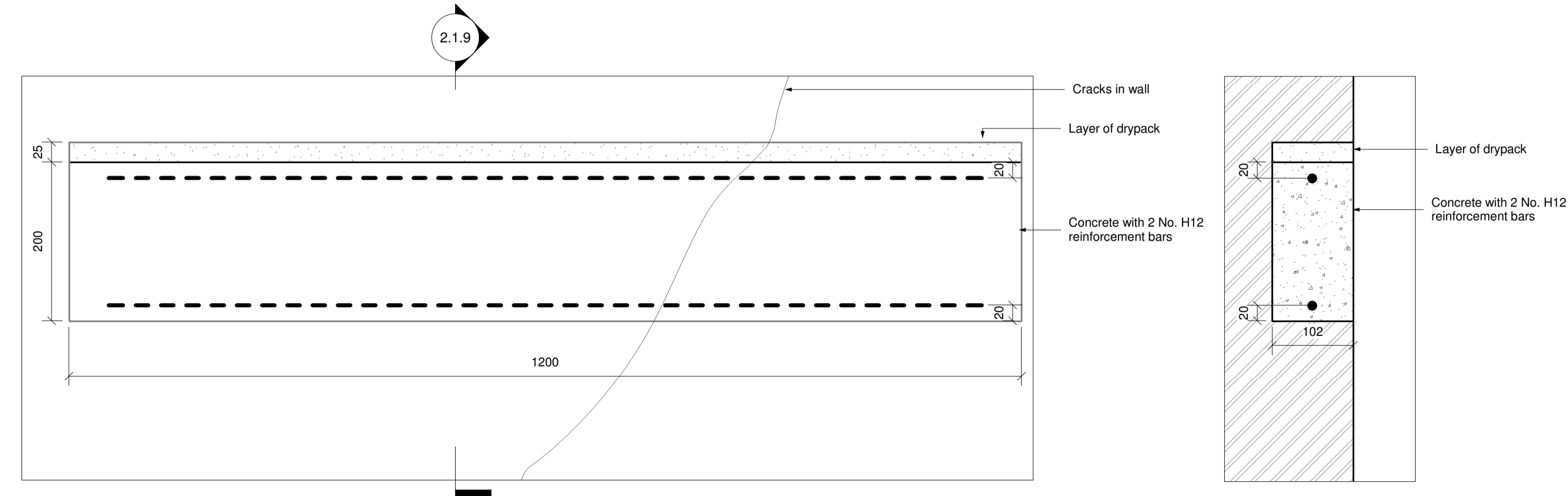
**5 UC Beam to SHS Detail**  
1 : 5



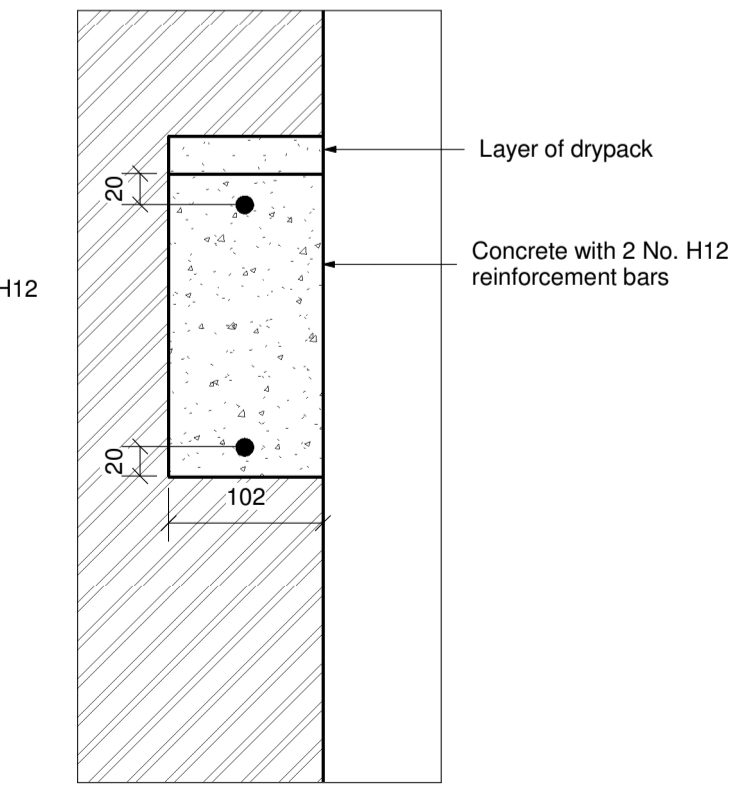
**6 Padstone Detail**  
1 : 5



**7 Steel Post to Masonry Connection**  
1 : 5



**8 Brick Stitch Detail**  
1 : 5



**9 Section 2.1.7**  
1 : 5

**Notes**  
G.1 This drawing is to be read in conjunction with all relevant Architect's and Engineer's drawings and specifications.  
G.2 Do not scale from a paper or digital version of this drawing.  
G.3 For general notes refer to drawing 15/137/1.2  
This drawing is the copyright of Barton Engineers & may not be copied, altered or reproduced in any way or passed to a third party without their written authority.  
Status

**Preliminary**  
**Not for Construction or Tendering**  
Issues / Revisions  
P1 Issued for Coordination 290116 DO  
P2 Issued for Coordination 140916 WK

**Barton Engineers**  
Unit 303 Westbourne Studios, 242 Acklam Road, London W10 5JJ  
telephone +44(0)20 7631 0348  
mail@bartonengineers.co.uk  
http://www.bartonengineers.co.uk

Project  
**27 Russell Square**  
Title  
**Structural Details**

Scales  
1:5  
Designed by  
**Rosie Stevenson**  
Drawn by  
**Daniel Ohuruogu**  
Drawing number  
**15/137/2.1**  
Checked by  
**Rosie Stevenson**  
Rev  
**P2**