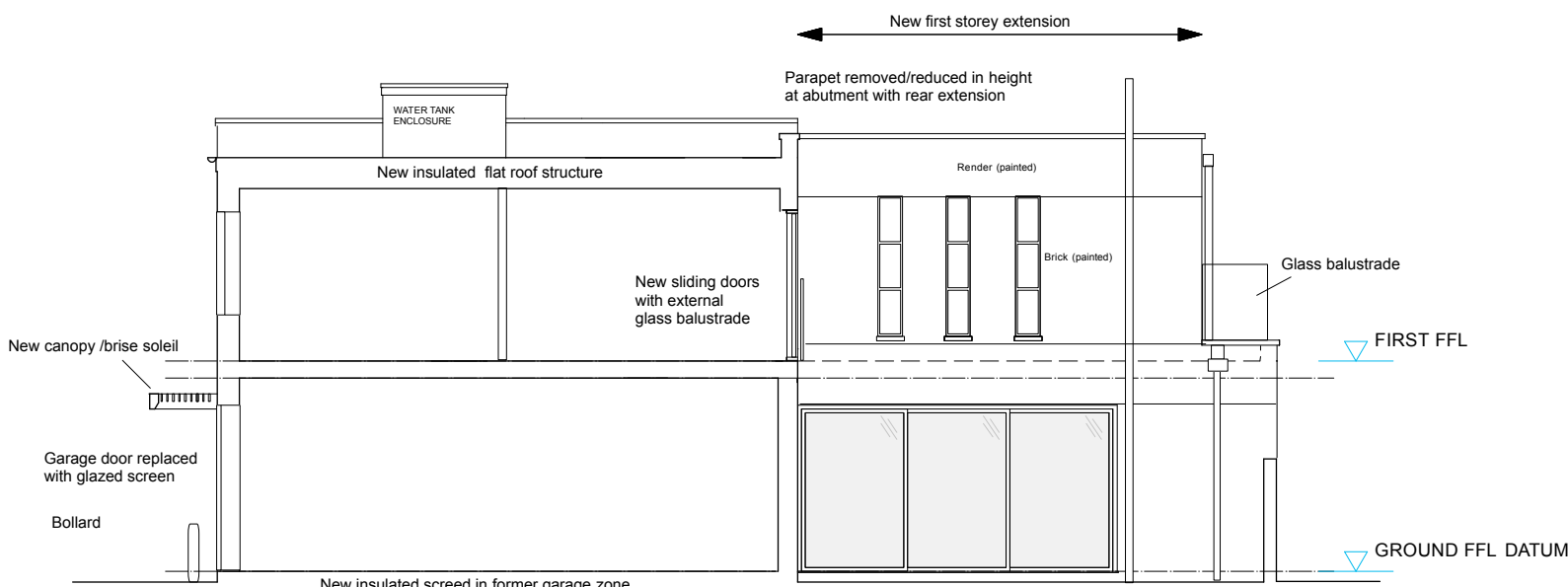
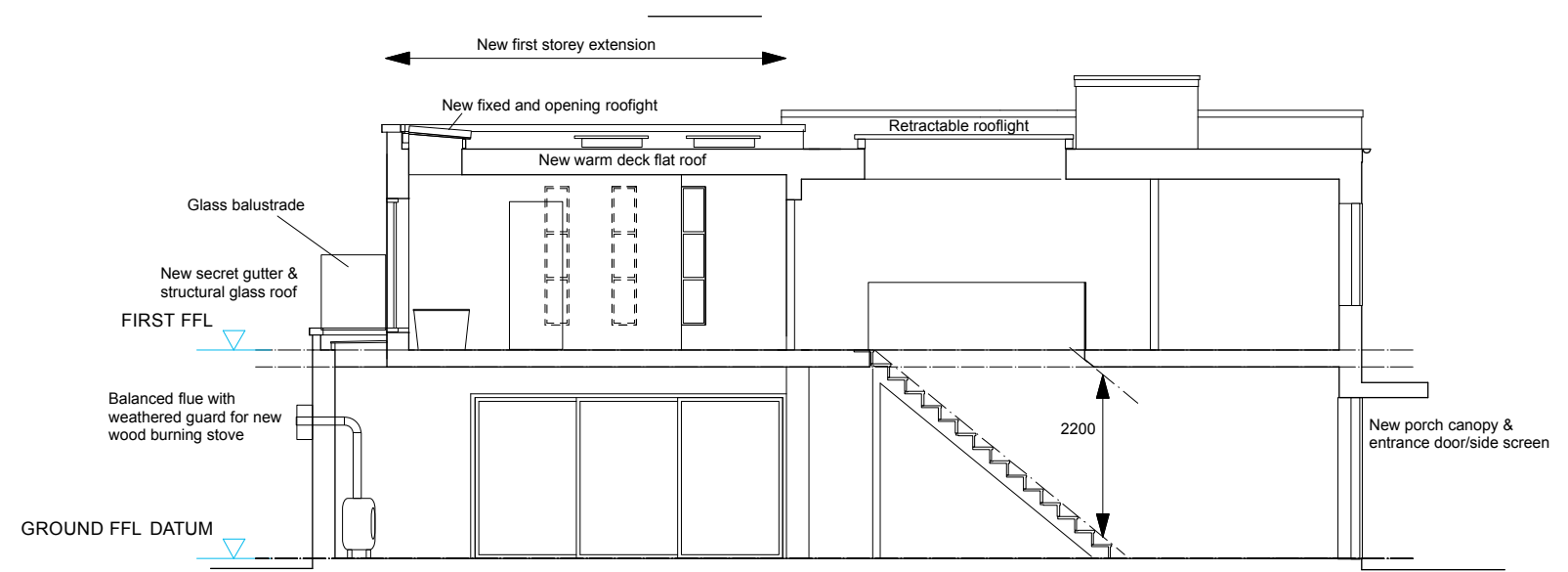
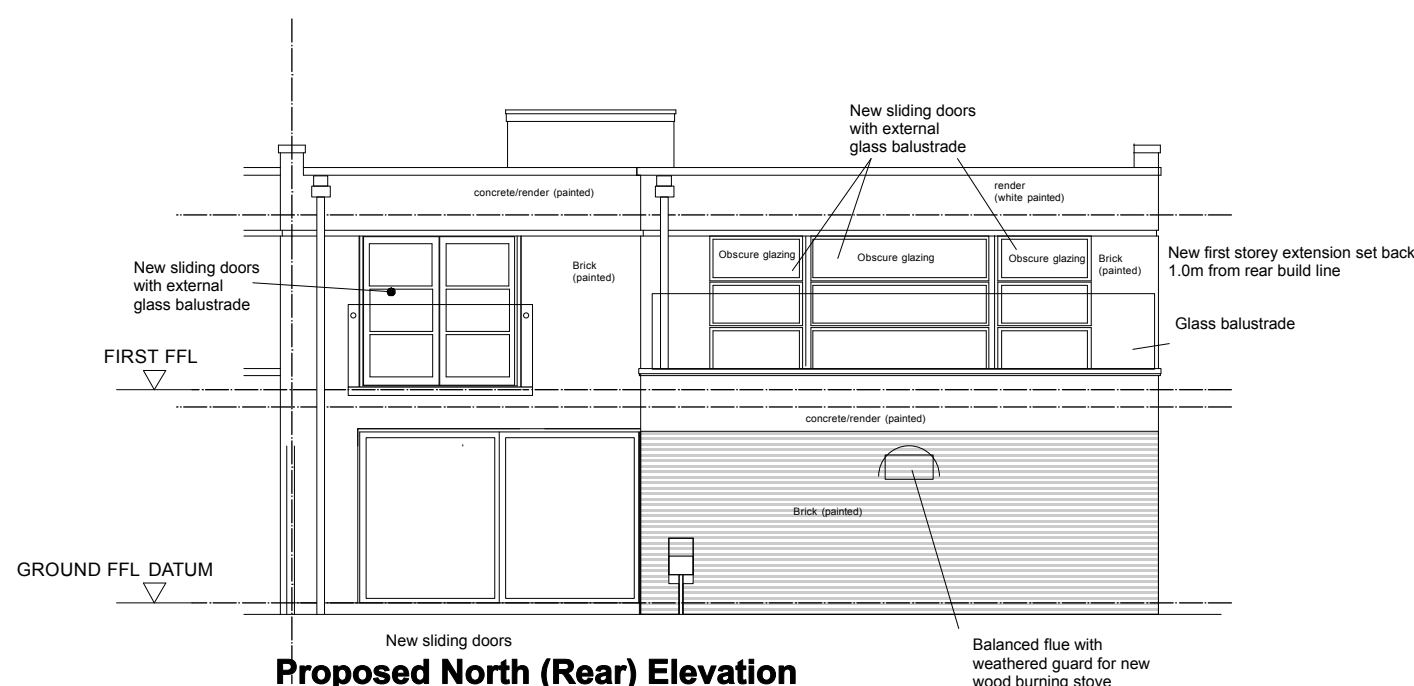
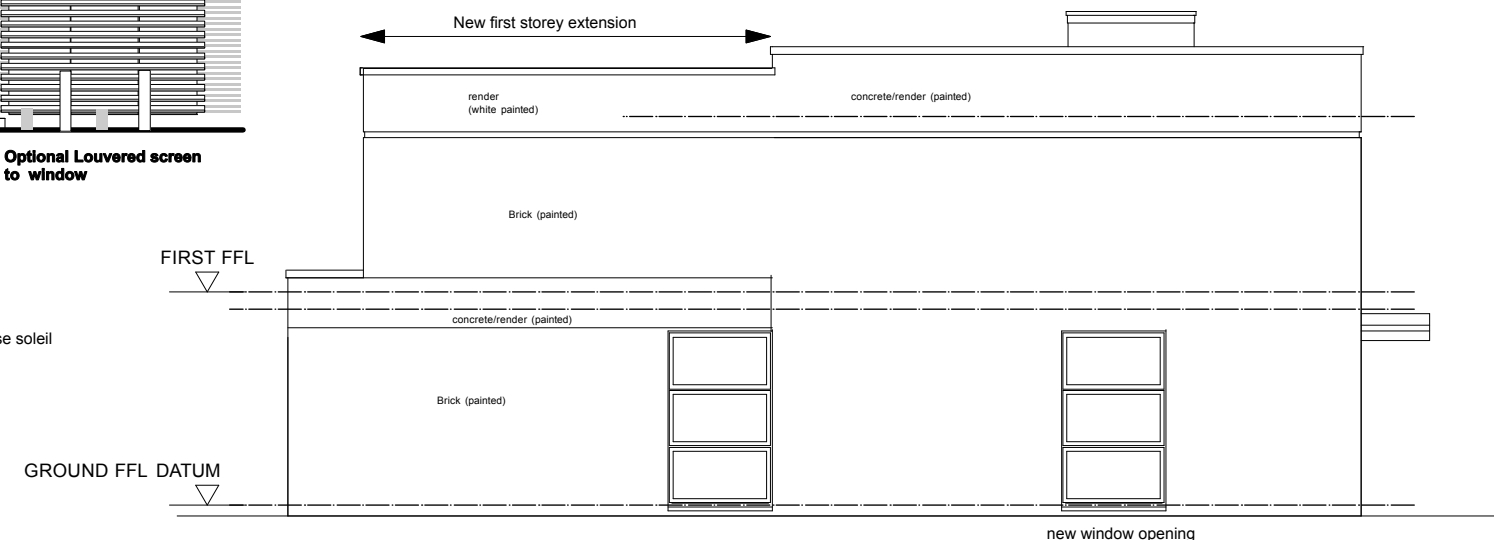
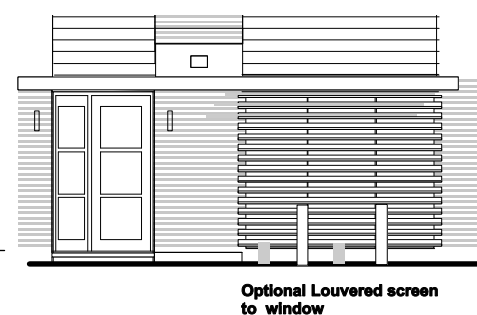


ALL AREAS QUOTED ARE APPROXIMATE AND SHOULD BE USED FOR GUIDANCE ONLY.
 ALL SETTING OUT LEVELS AND DIMENSIONS TO BE CHECKED ON SITE.
 THIS DRAWING MUST NOT BE USED FOR LAND TRANSFER PURPOSES.
 DO NOT SCALE FROM THIS DRAWING.
 © ANDREW JONES ASSOCIATES LTD



All new windows and doors to be aluminium framed with polyester powder coated finish RAL Colour)

REV B: UPDATED FOR SUBMISSION TO PLANNING AUTHORITY 03/10/16
 REV A: UPDATED & ISSUED FOR ESTATE APPROVAL 14/09/16

PROJECT TITLE:
116, KING HENRY'S ROAD, LONDON NW3 3SN
 DRWG TITLE:
PROPOSED ELEVATIONS/SECTIONS X-X; Y-Y
 SCALE: 1/100 @ A3 PRINT SIZE
 DATE: AUGUST 2016 DRWG N°: REV: **B**
 DRWG STATUS: **PLANNING**
1037/P/005

ANDREW JONES ASSOCIATES
 CHARTERED ARCHITECTS
 PYRAMID STUDIO : 12 BARROW HEDGES WAY
 CARSHALTON, SUTTON, SURREY SM5 3LL
 TEL: 020-8643 0601 FAX: 020-8770 1753 MOBILE: 07850-257 855
 E-MAIL: architects@andrewjonesassociates.com
www.andrewjonesassociates.com