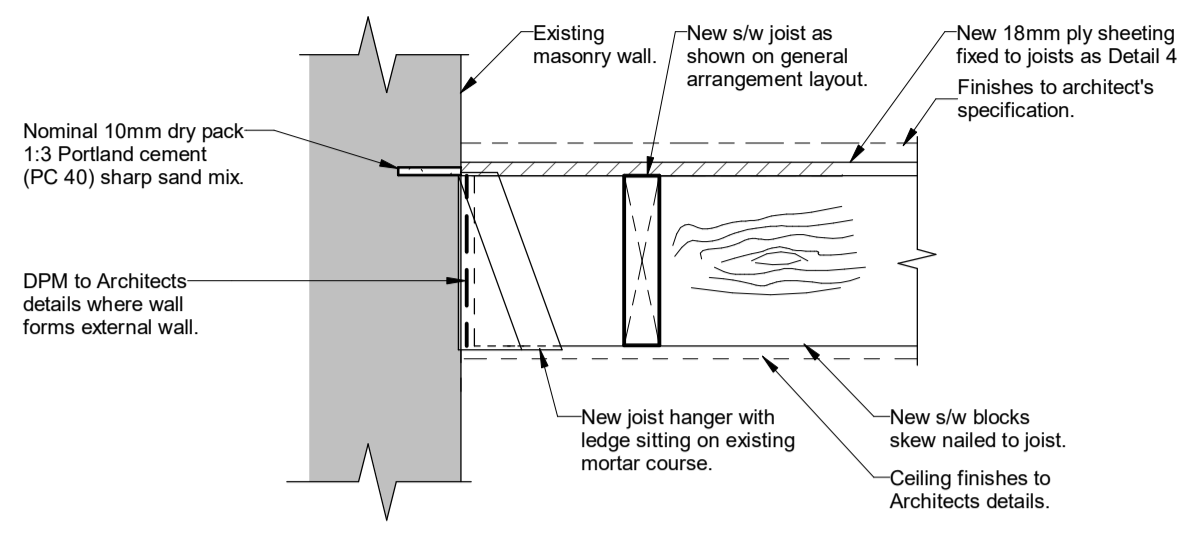
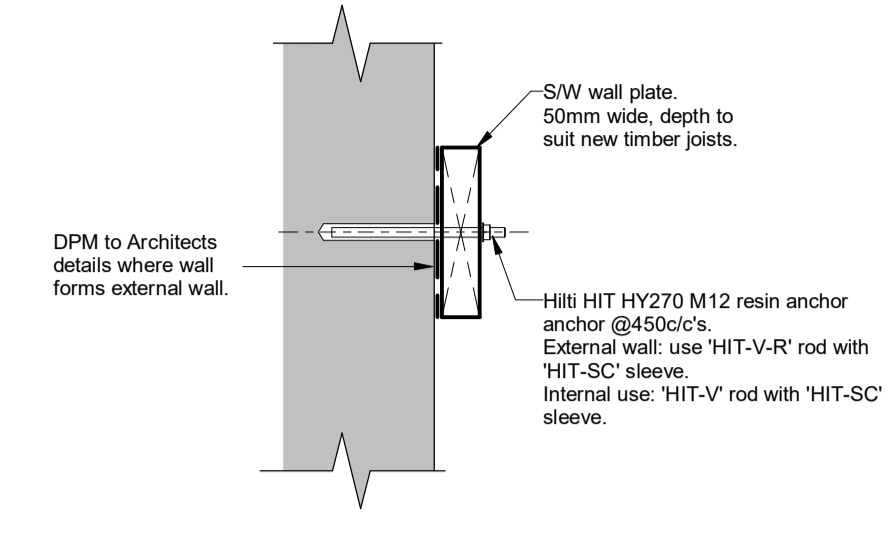


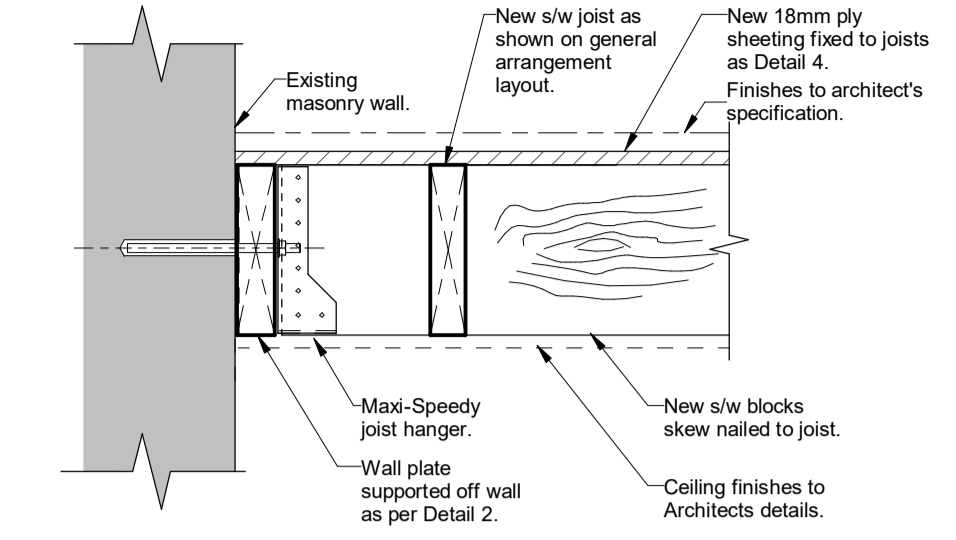
- General Notes**
1. Drawings shall be referred to for structural work only unless otherwise stated and read in conjunction with Architect's, Service Engineer's and Sub-Contractor's drawings.
 2. The Contractor shall check all levels and dimensions, any errors or omissions are to be reported at once to the Engineer.
 3. For General Notes refer to no. 9100-DRG-99YY-GN002.



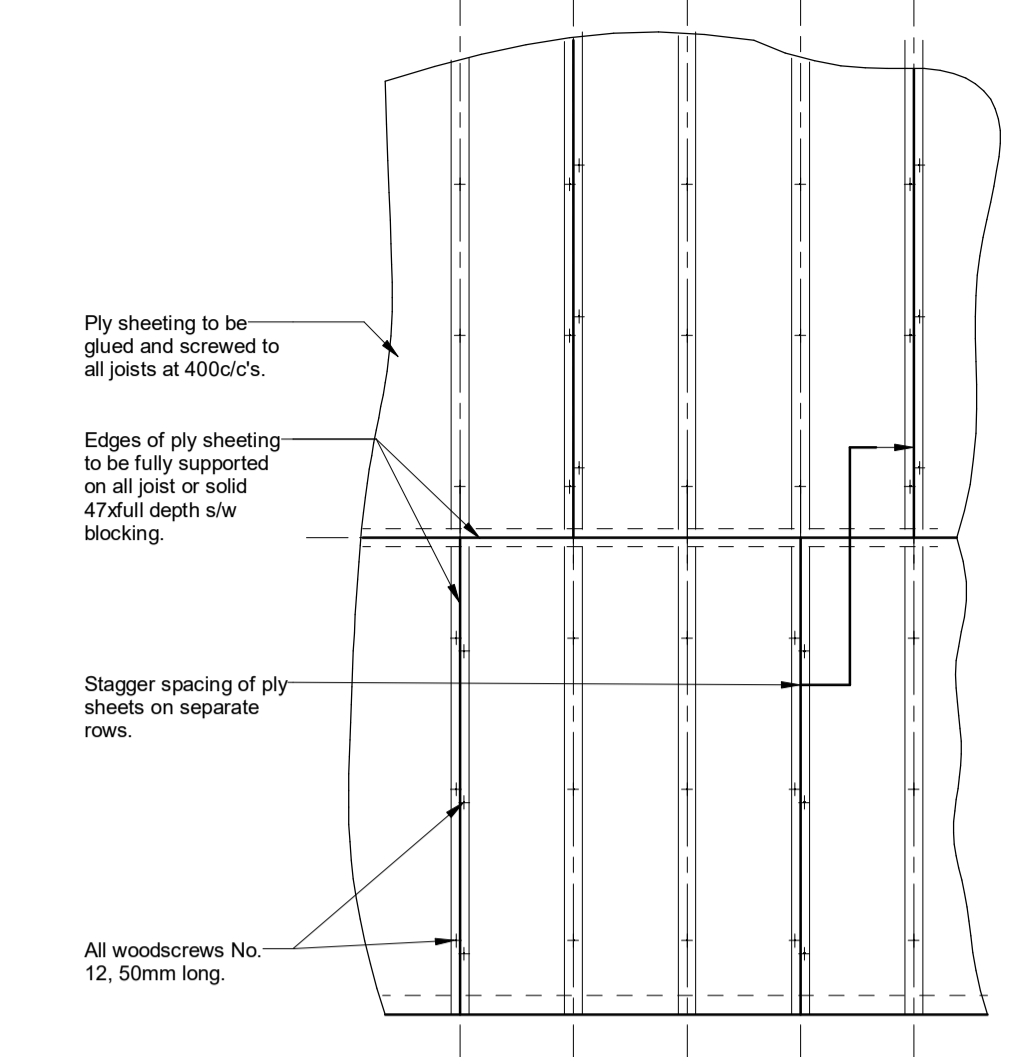
Detail 1: Support Of New Timber Floor Off Existing Masonry Wall-Option 1.
scale 1 : 10



Detail 2: New Timber Wall Plate Connection To Existing Masonry Wall
scale 1 : 10

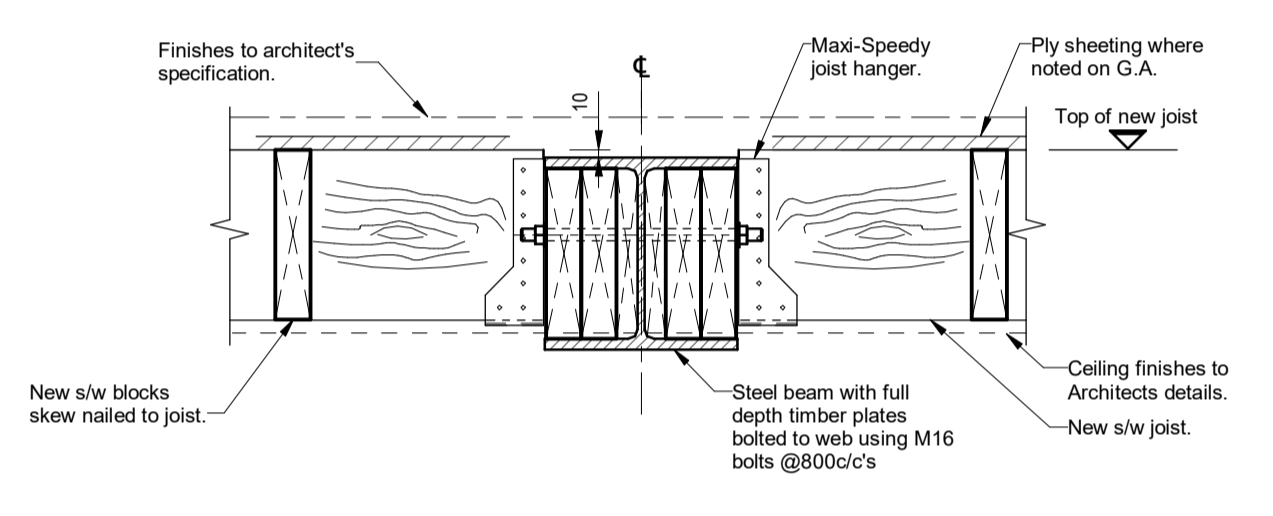


Detail 3: Support Of New Timber Floor off Existing Wall-Option 2
scale 1 : 10

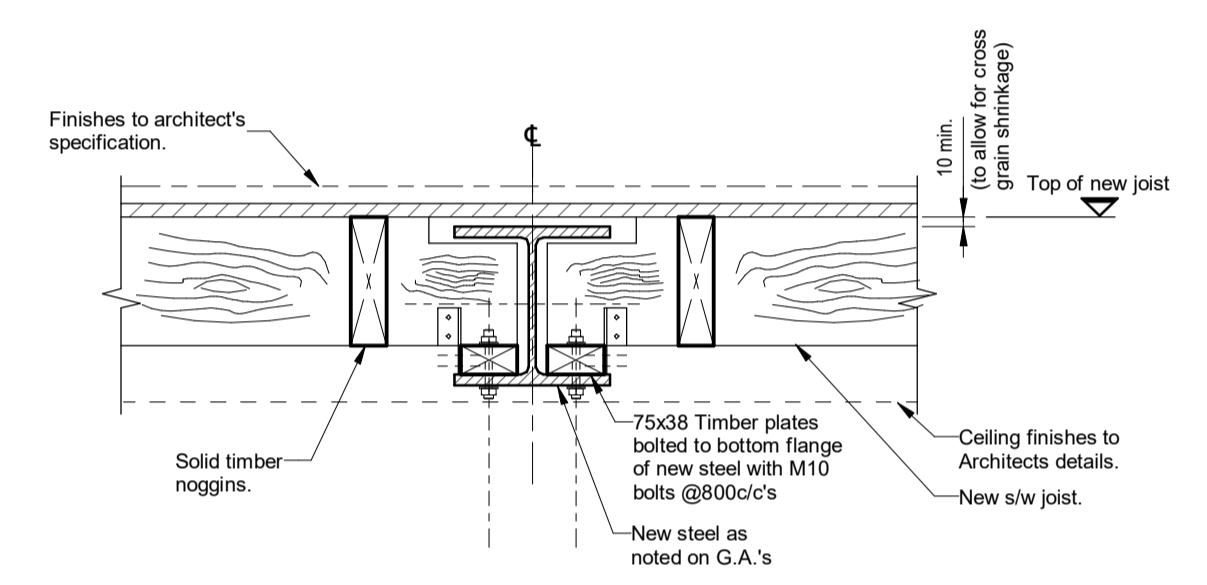


NOTE
TO BE PROVIDED WHERE NEW TIMBER FLOOR DENOTED WITH * ON G.A.'s.

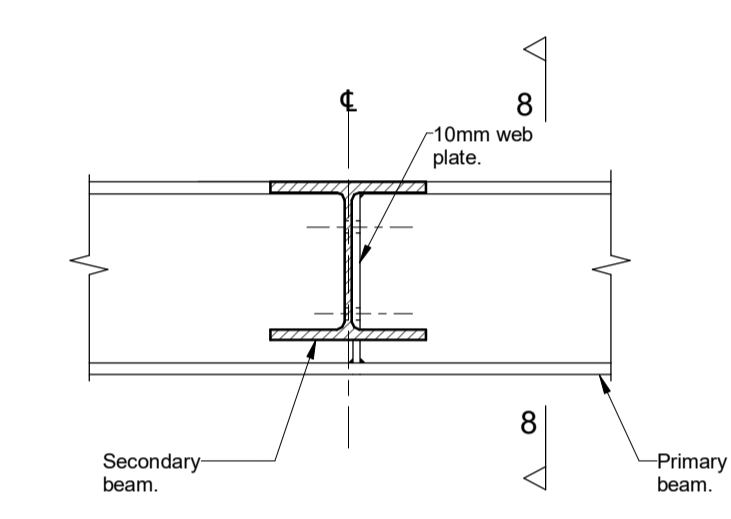
Detail 4: Ply sheeting fixing for diaphragm action
scale 1 : 20



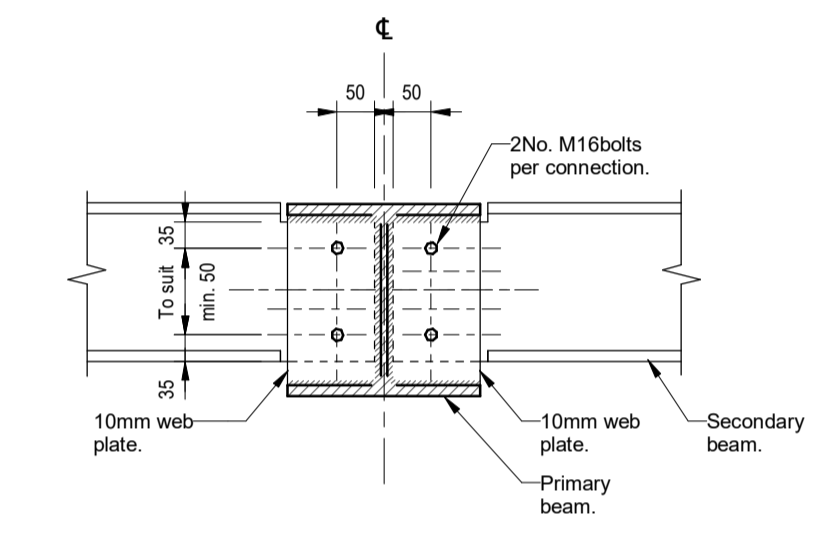
Detail 5: New Timber Floor Supported Off Steel Beam-Option 1
scale 1 : 10



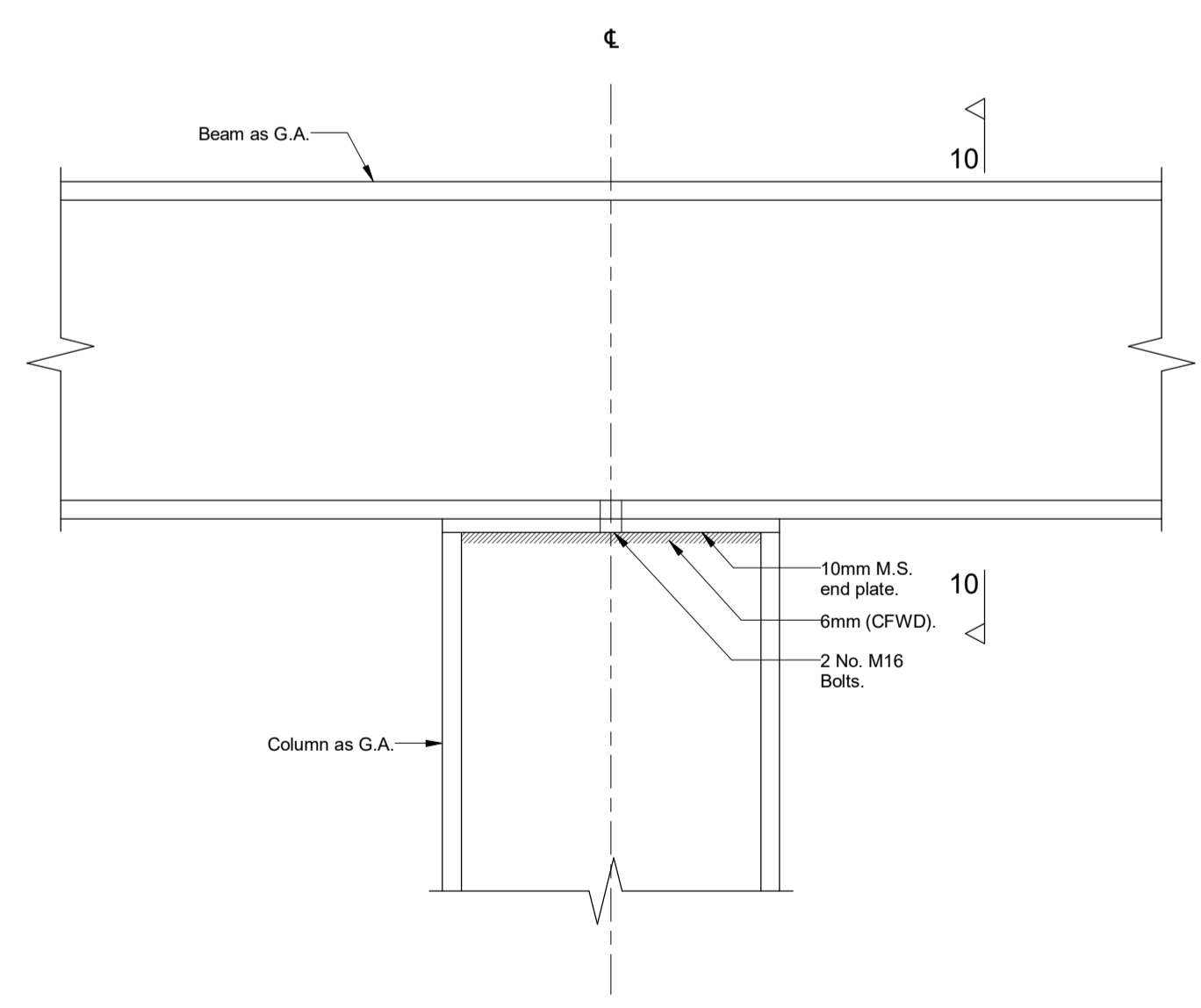
Detail 6: New Timber Floor Supported Off Steel Beam-Option 2
scale 1 : 10



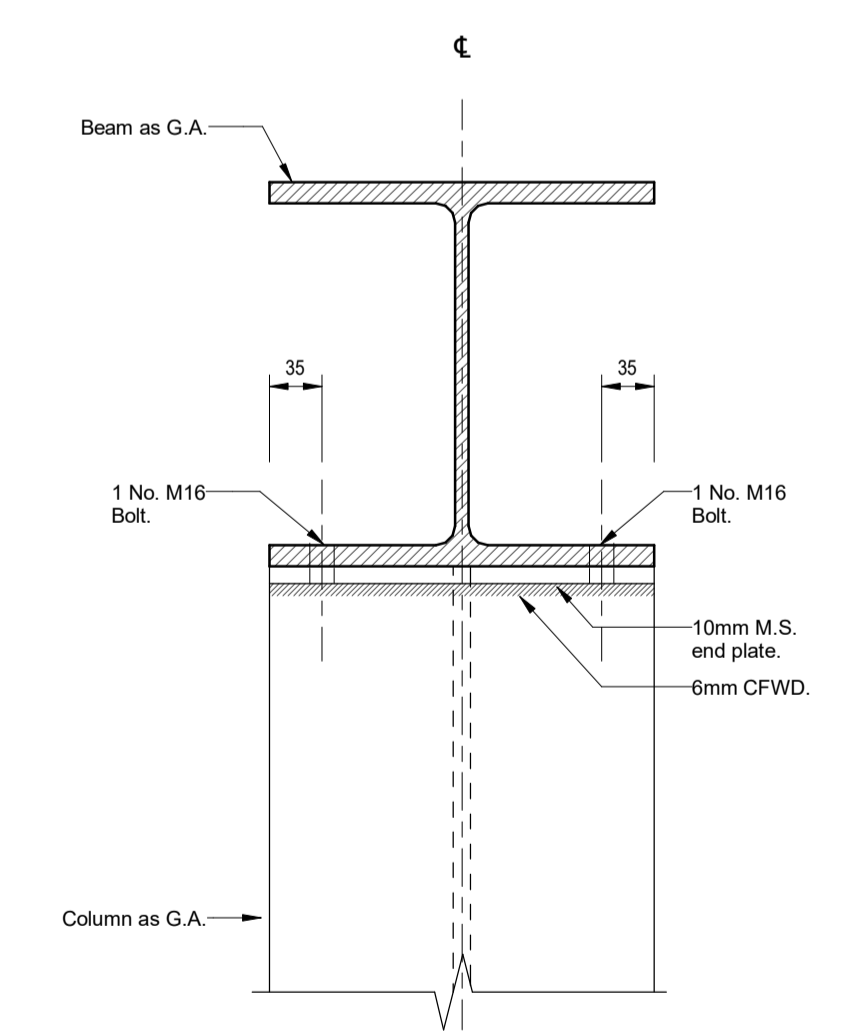
Detail 7: Typical Primary and Secondary Beam Connection.
scale 1 : 10



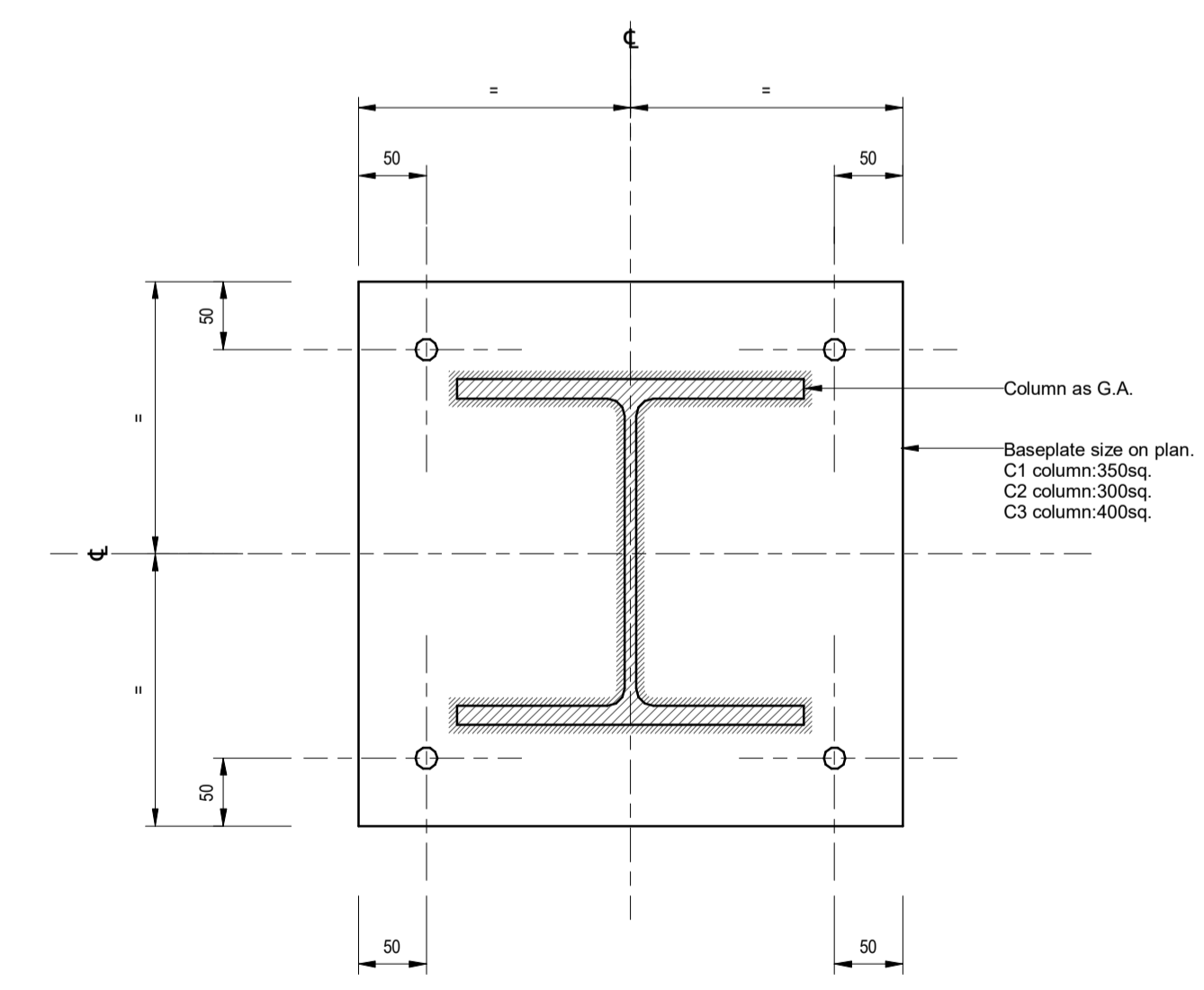
Section 8-8
scale 1 : 10



Detail 9: Column to beam connection
scale 1 : 5



Section 10-10
scale 1 : 5



Section 12-12
scale 1 : 5

REV	DATE	DESCRIPTION	BY	CHKD
A	12.09.16	Issued for Construction.	DA	TP
-	28.07.16	First Issue	DA	TP

CONSTRUCTION



TITLE:
Generic Details for New Timber Floors and Steelwork

PROJECT:
**Project No: 11581
Kidderpore Avenue**

SCALE: A1@ As Shown DATE: July 16 DRAWN: DA CHKD: TP

DRG NO. 9100-DRG-00YY-DE009 REV. A

Tully De'Ath consultants
Engineering at its Best

T: 01342 828 000
E: info@tullydeath.com
W: www.tullydeath.com