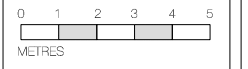
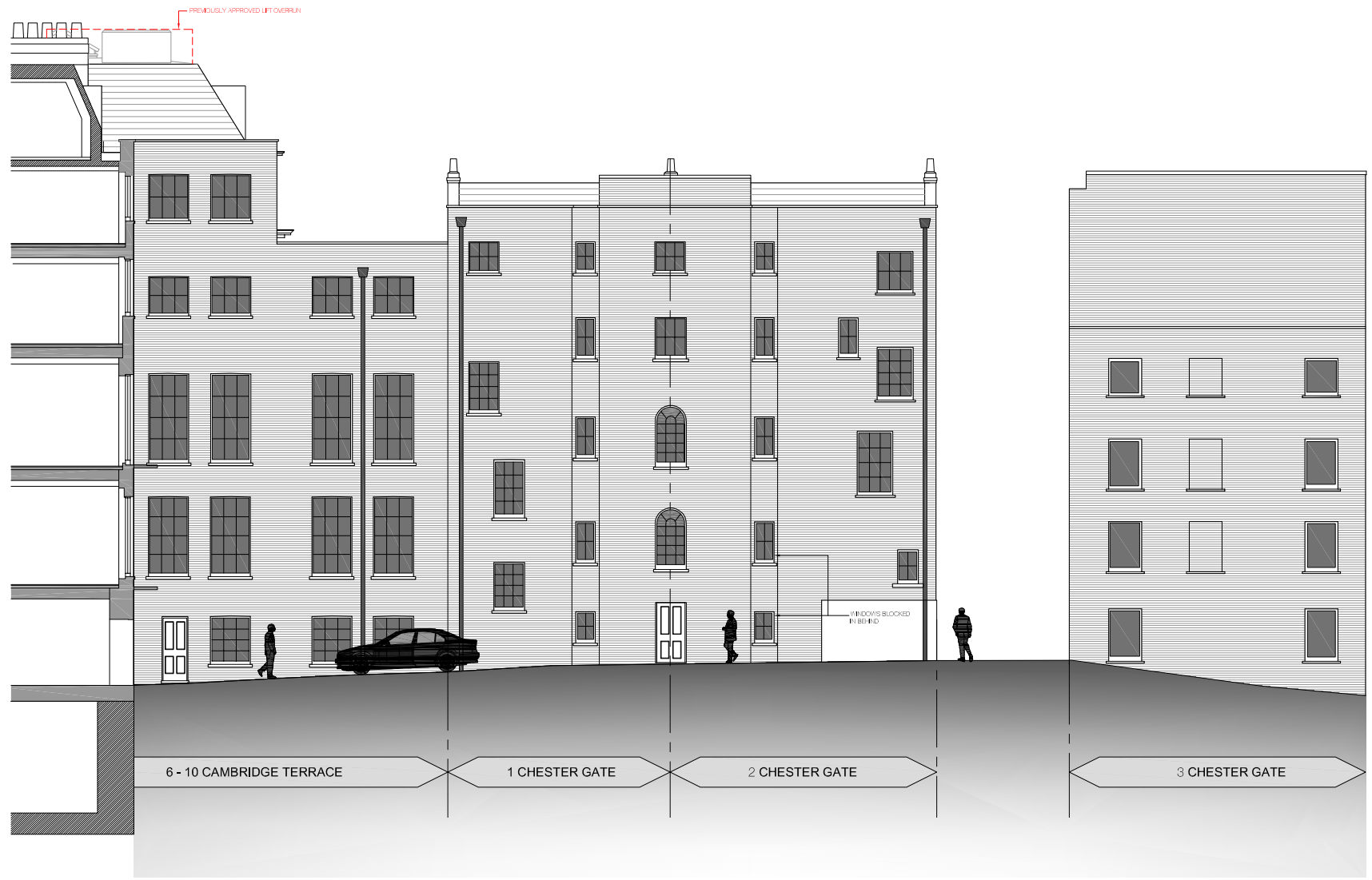


DISCLAIMER
In accordance with our duties under the Misrepresentation Act 1997 and the Information Act 1991, these details have been prepared in good faith but are not intended to constitute part of an offer of contract or create any contractual relationship. No disclosure or information of any kind provided by CPC London or its Agents, whether written or verbal, contained in these Particulars or otherwise, (Information) may be relied upon as a statement of representation, warranty or fact. Neither CPC London nor its Agents have any authority to make any representation or warranty and accordingly any Information is given orally without responsibility on the part of CPC London, its Agents or the seller. Any plans, photos, and computer-generated images shown are indicative and cannot be guaranteed to represent the complete finished position of a scheme. Any Areas, measurements or distances given are approximate only. Any products and materials shown or indicated are indicative only and may be subject to variations of change. It is not possible to scale from these drawings. Any reference to specifications or to use of any part of the property is not a statement that any necessary planning, building regulations or other consent has been obtained. These matters must be verified by any buyer/lessee. Any buyer/lessee must satisfy himself by inspection or other means as to the correctness of any Information given.
© All rights reserved to CPC London.

NOTES



REV	BY	DATE	DESCRIPTION

PROJECT CODE:
Project Quad
PROJECT TITLE:
6 - 10 Cambridge Terrace
and 1 - 2 Chester Gate
Regents Park
London NW1

DRAWING TITLE:
PROPOSED ELEVATION
CHESTER GATE
REAR

DRAWN BY: NC	CHECKED BY: NC
ISSUED FOR: PLANNING	
SCALE: 1:200 @ A3	DATE: JUNE 16
DESIGN NO: 639-4.004	REVISION: B