

icon can be tailored to suit the requirements of any interior design concept with options ranging from sophisticated corporate steel finishes through to inviting natural hardwoods for retail or even residential environments. Whatever the nature of the scheme **icon** has a finish, design and specification capable of making a tangible contribution towards the successful execution of the project. As tactile elements of buildings directly influence the occupiers' perception of their surroundings, it is essential to attain a quality finish for high profile fixtures such as handrails.

PROPOSED HANDRAIL FINISH - SPECIAL METALLIC BRONZE FINISH TO MATCH EXISTING

NyMet® Coating

The aluminium version of **icon** is factory finished in a unique NyMet® nylon coating. NyMet® comprises a three coat system of electrostatically applied Polymer offering a 150 micron finish which has twice the thickness and 10 times the resistance to abrasion of a typical polyester powder coating. NyMet® possess flexible properties which prevent the coating from chipping and flaking, weathering resistance is excellent and the finish satisfies all relevant Fire Officer requirements. NyMet® is resistant to solvents and therefore most forms of graffiti remain on the surface and can be easily removed without affecting the coating.

NyMet® Range

NyMet® is generally applied as a semi gloss finish and is available in an exclusive range of metallics together with black and white as the primary range of options. Standard BS or RAL colours are also offered and even special solid colours or metallics can be formulated upon request.

Natural Hardwoods

icon offers a contemporary selection of factory polished and lacquered Hardwood handrails. Other species can be considered upon request and all Hardwoods used for **icon** handrails are supplied from sustainably managed sources.

Stainless Steel

The Stainless Steel **icon** system is produced in 304 grade for internal use and 316 grade for external applications. A refined, brushed satin finish is directionally applied to most components whereas tubes are radially polished and certain castings are glass bead blasted.

| | |
|----------------|----------------------------|
| N White | H Oak |
| N Platinum | H Ash |
| N Cadmium | H Cherry |
| N Tungsten | H Maple |
| N Gun Metal | H Beech |
| N Black | |
| N Vanadium | S Satin Stainless Steel |
| N Titanium | |
| N Osmium | |
| N BS or RAL | |



SN.4G.5G.6E.ST4
Satin Polished Stainless Steel top rail connected with Stainless Steel offset stems to Platinum NyMet® coated side fixed uprights at maximum 1200mm centres with offset Stainless Steel wire rope infill and fittings.



Winner of countless Industry accolades including the prestigious Civic Trust Award, Chiswick Park is the masterplan of developer Stanhope, comprising 12 office buildings laid out around an urban park at the western end of Chiswick High Road, west London. Designed by Richard Rogers Partnership, the scheme addresses the desire of companies to attract and retain key employees with the logic that if people enjoy work, they produce better work, which in turn creates a better business.

The immaculately detailed buildings surround a central lake and an impressive range of communal facilities are provided including a health club, swimming pool, café and open-air performance area. Unlike most office developments the park is open to the public and the gardens play regular host to a wide array of outdoor social events. The average build period for the six completed offices was achieved with remarkable speed and efficiency, taking only 36 weeks including category "A" finishes.



SS.1C
Satin Polished Stainless Steel handrail connected at maximum 1200mm centres to Stainless Steel stem brackets with concealed fixings.

410 STEEL LADDERS TO PLANT ROOM

- Manufacturer: Steelway.
 - Product reference: Ship Type Ladder - Stainless Steel.
- Standard: To BS 4211.
 - Structural design: To BS 5950-1.
- Safety hoops: Not required.
- Platforms: As shown on drawings.
- Finish as delivered: Galvanized to BS EN ISO 1461.
- Fixing: To manufacturer's recommendation.

560A PROPRIETARY BALUSTRADES TO PERIMETER OF ACCESSIBLE ROOF AREAS

- Handrails/ Balustrade
 - Manufacturer: Handrail Design Limited
 - Handrail Product Reference: Icon Tube NN
Platinum NyMet® coated handrail connected at maximum 1200mm centres
 - Balustrade Product Reference: Icon Tube NN.4E.5A.6B.CG
Platinum NyMet® coated toprail connected with In Line stems to Platinum NyMet® upright bolt fixed to
Steel 'C' Channel at maximum 1200mm centres with In Line Panel Holders supporting 10mm toughened clear glass
infill panel with nominal reduced corners and edges polished all round.
- Other requirements: None.
- Fixing: to manufacturer's recommendation.

INSTALLATION

610 MOISTURE CONTENT

- Temperature and humidity: Monitor and control internal conditions to achieve specified moisture content in wood components at time of installation.

620 PRIMING/SEALING/PAINTING

- Surfaces inaccessible after assembly/installation: Before fixing components, apply full protective/decorative treatment/coating system.

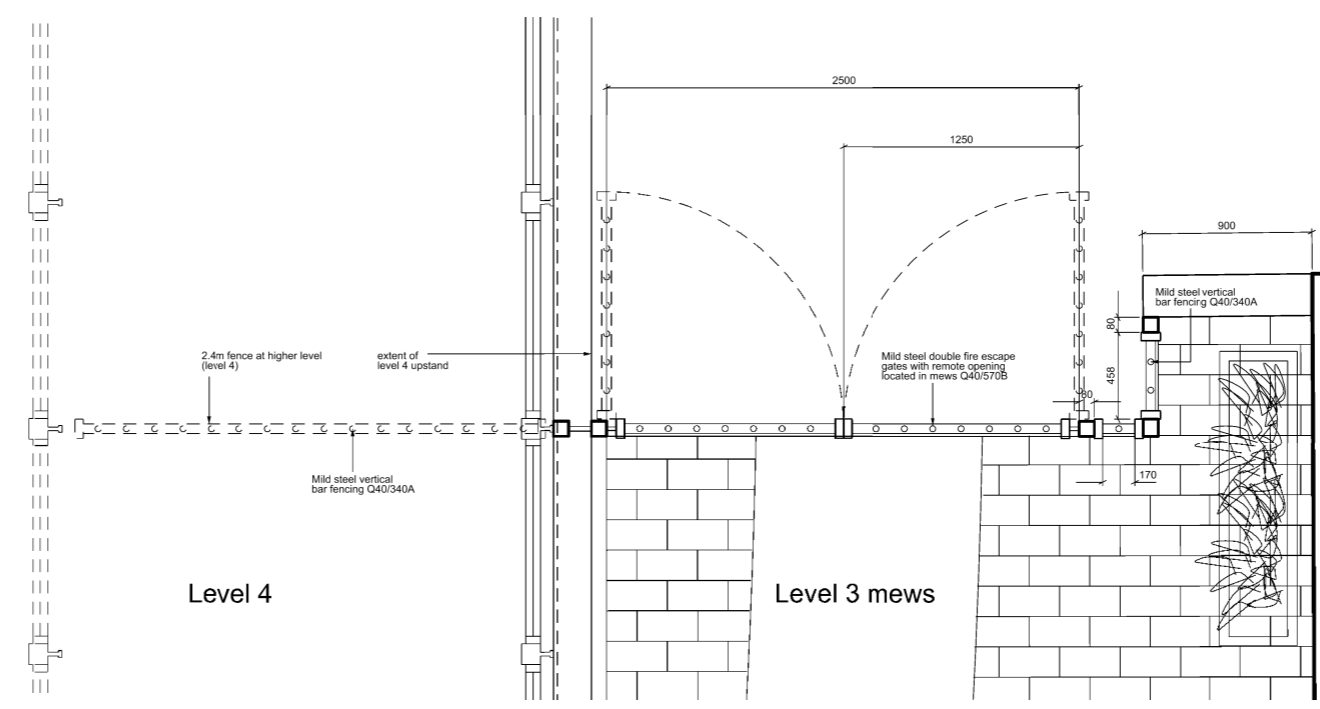
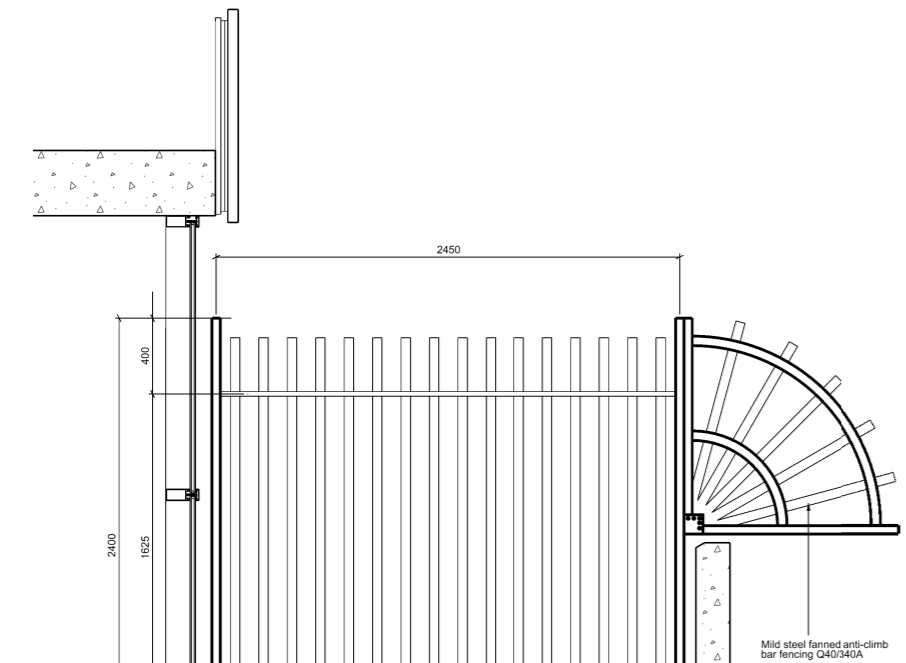
630 CORROSION PROTECTION OF DISSIMILAR MATERIALS

- Components/ substrates/ fasteners of dissimilar materials: Isolate using washers/ sleeves or other suitable means to separate materials to avoid corrosion and/ or staining.

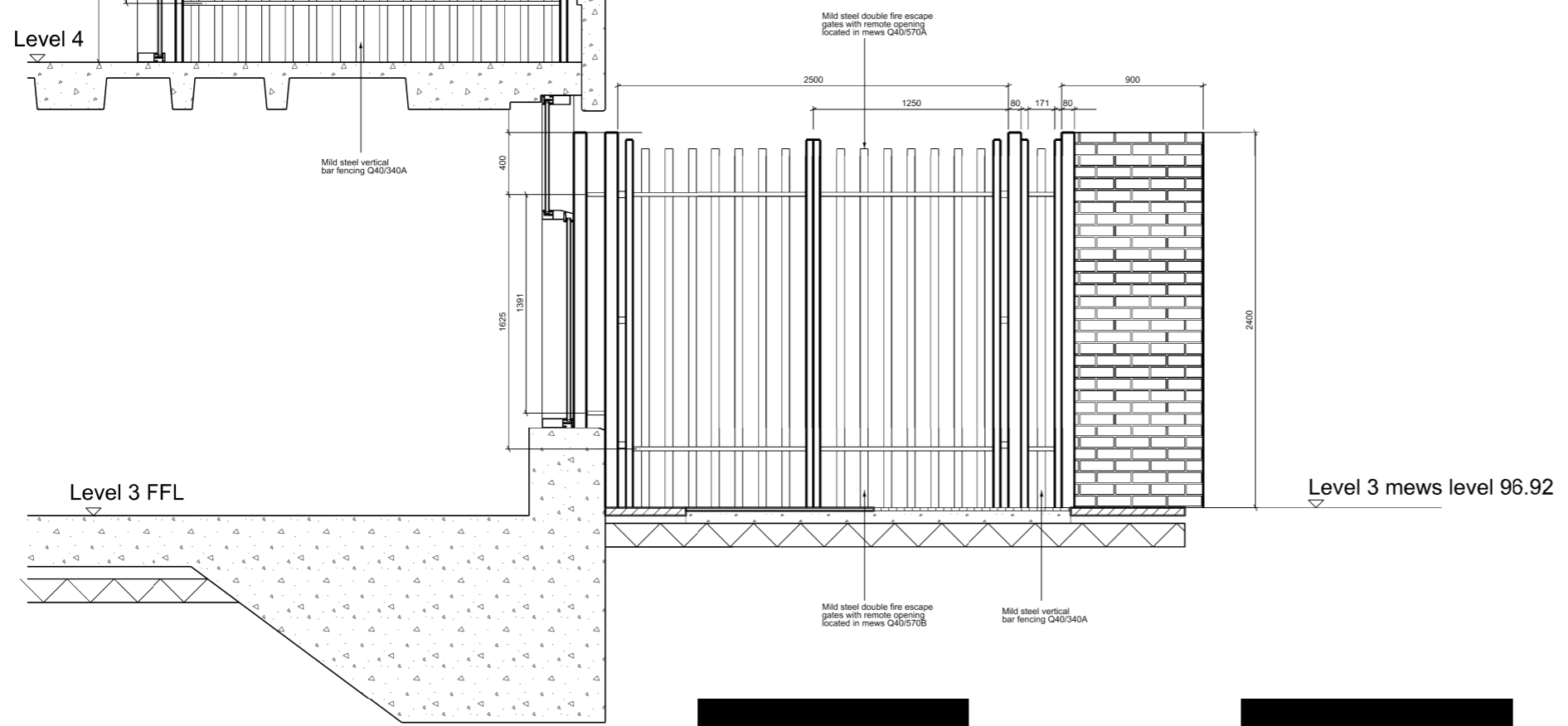
640 INSTALLATION GENERALLY

- Fasteners and methods of fixing: To section Z20.
- Structural members: Do not modify, cut, notch or make holes in structural members, except as indicated on drawings.
- Temporary support: Do not use stairs, walkways or balustrades as temporary support or strutting for other work.

- notes
1. Do not scale from this drawing
 2. Work to figured dimensions where shown
 3. Confirm dimensions on site before fabrication or construction - report any discrepancies to CA



1. Plan of gate and fence at level 3 (level 4 shown dotted)



2. Elevation of gate and fence at levels 3 & 4

| rev | date | description | by |
|-----|----------|---|----|
| T2 | 23/09/08 | For tender - fence changed to tubular steel | ER |
| T1 | 17/09/08 | fanned anti-climb fence added to level 4 walkway, notes updated | DM |
| | | initial issue for measurement | |

Shepherd Epstein Hunter
Architecture Planning Landscape

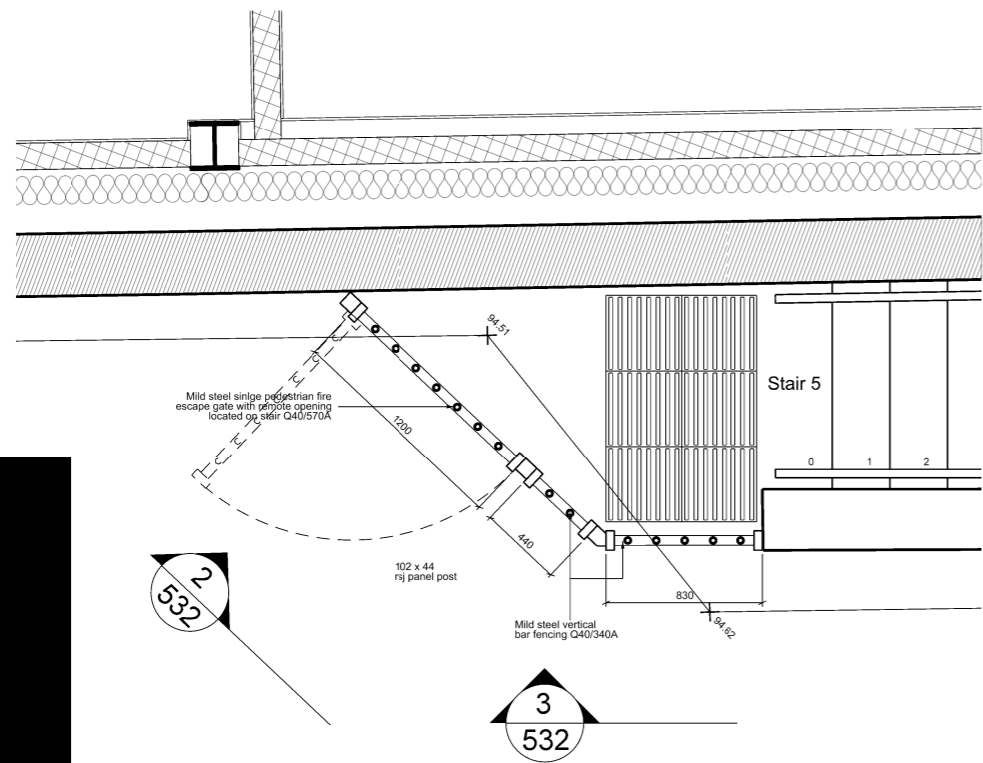
Phoenix Yard, 65 Kings Cross Road, London WC1X 9LW
tel: 020 7841 7500 fax: 020 7841 7575
email: architecture@seh.co.uk web: www.seh.co.uk

Project
Thornhaugh Mews Project

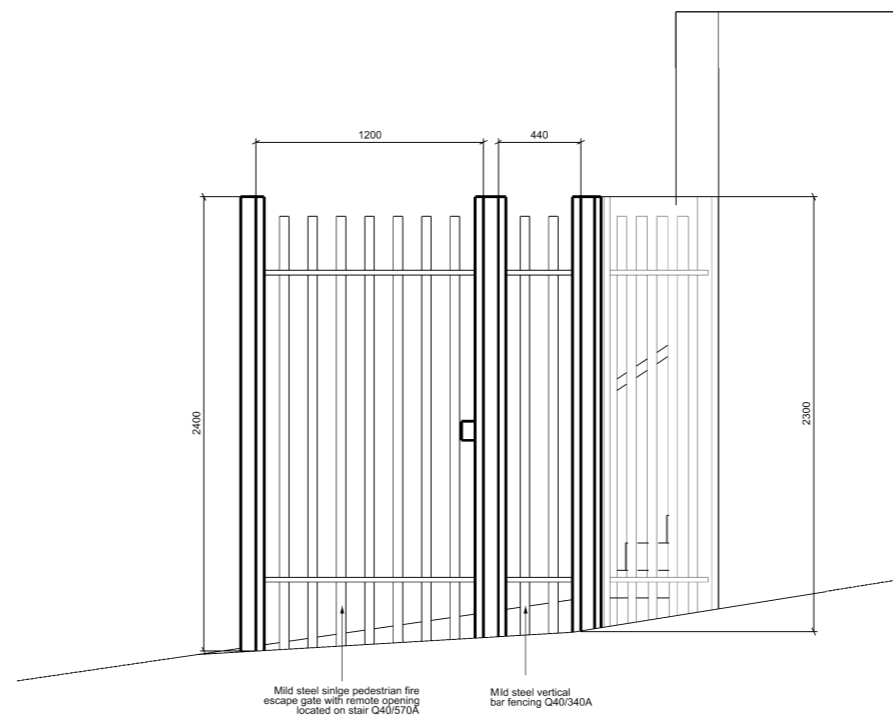
client
Institute of Education

| drawing status | scale | size |
|---|--------------|-----------|
| Tender | 1:20 | A1 |
| drawing | job no | |
| Fence and Gate at Mews and level 4 walkway | 06050 | |
| drawing no. | rev | |
| 531 | T2 | |

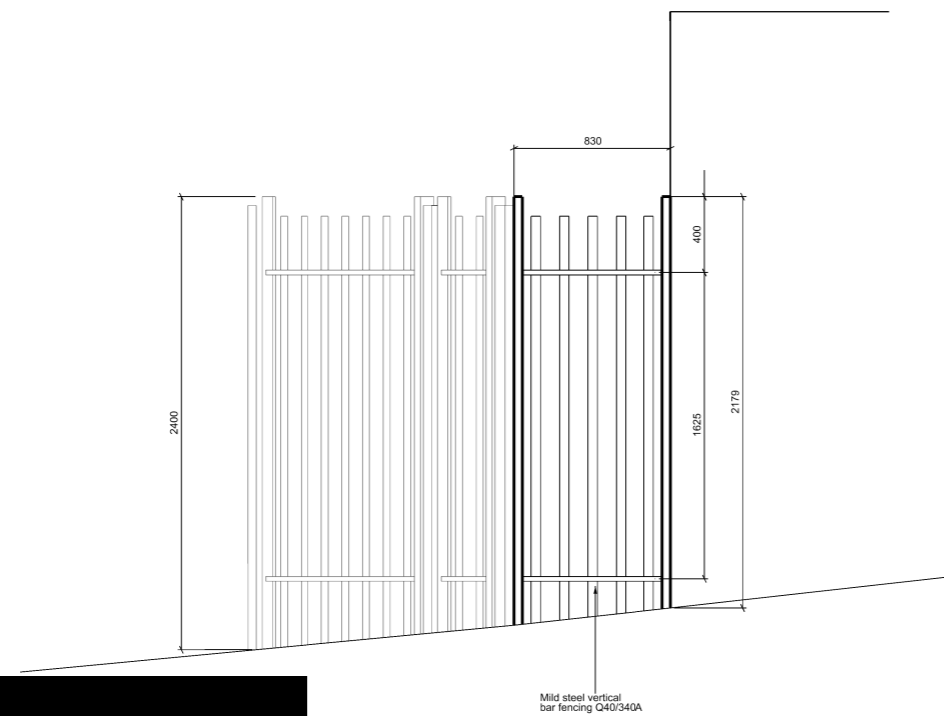
- Notes
1. Do not scale from this drawing
 2. Work to figured dimensions where shown
 3. Confirm dimensions on site before fabrication or construction - report any discrepancies to CA



1. Plan of gate and fence at service road (by stair 5 bottom landing)



2. Front elevation of gate



3. Elevation of side fence

| rev | date | description | by |
|-----|----------|--|----|
| T2 | 21/09/08 | Tender issue - Type of gate and fence revised, notes updated | DM |
| T1 | 17/09/08 | initial issue for measurement | DM |

drawing amendments

Shepherd Epstein Hunter
Architecture Planning Landscape

Phoenix Yard, 65 Kings Cross Road, London WC1X 9LW
tel: 020 7841 7500 fax: 020 7841 7575
email: architecture@seh.co.uk web: www.seh.co.uk

Project
Thornhaugh Mews Project
client
Institute of Education

| drawing status | scale | size |
|--|-------------|-------|
| Tender | 1:20 | A1 |
| drawing | job no | 06050 |
| Fence and Gate at service road & stair 5 | drawing no. | 532 |
| | rev. | T2 |