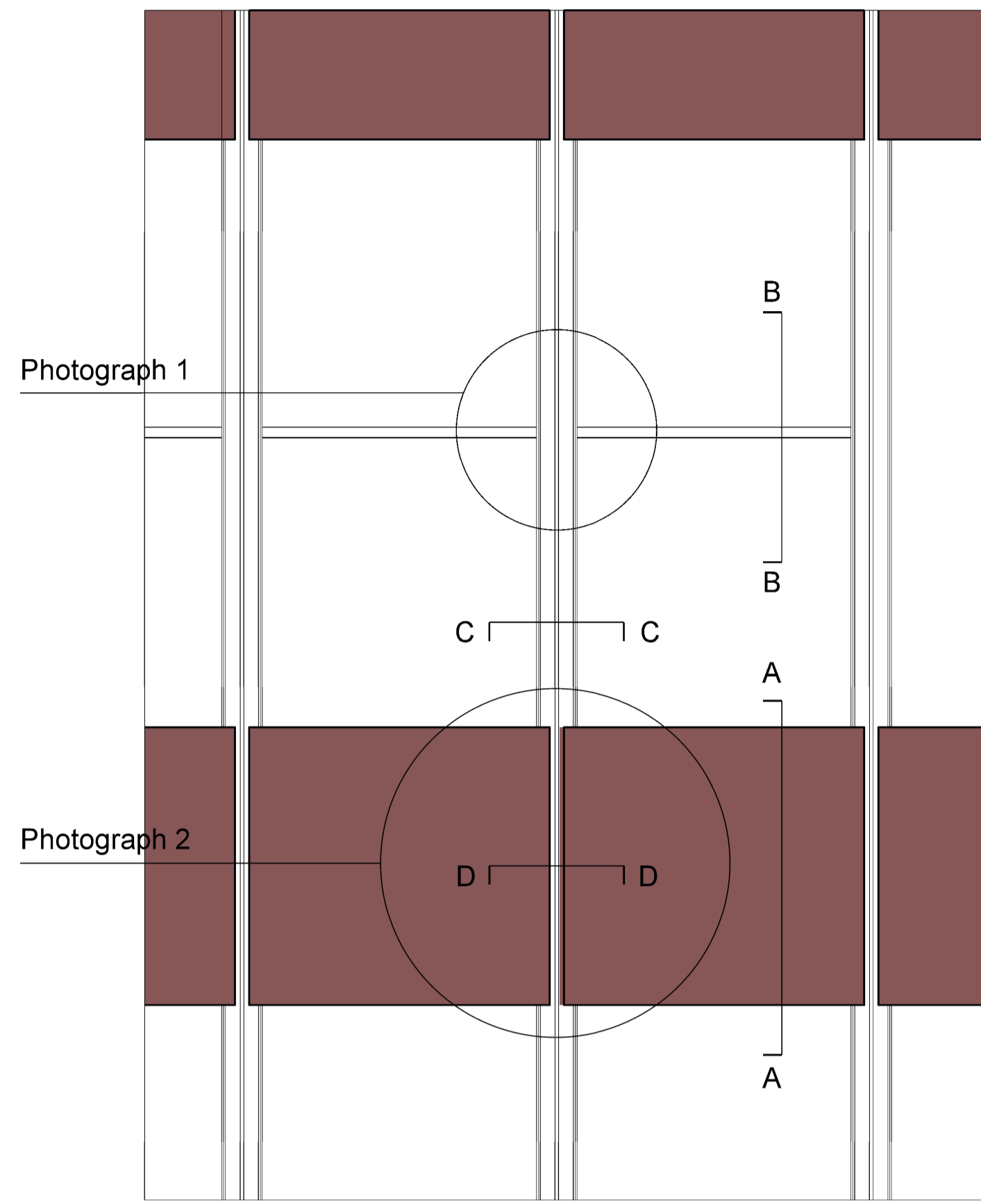


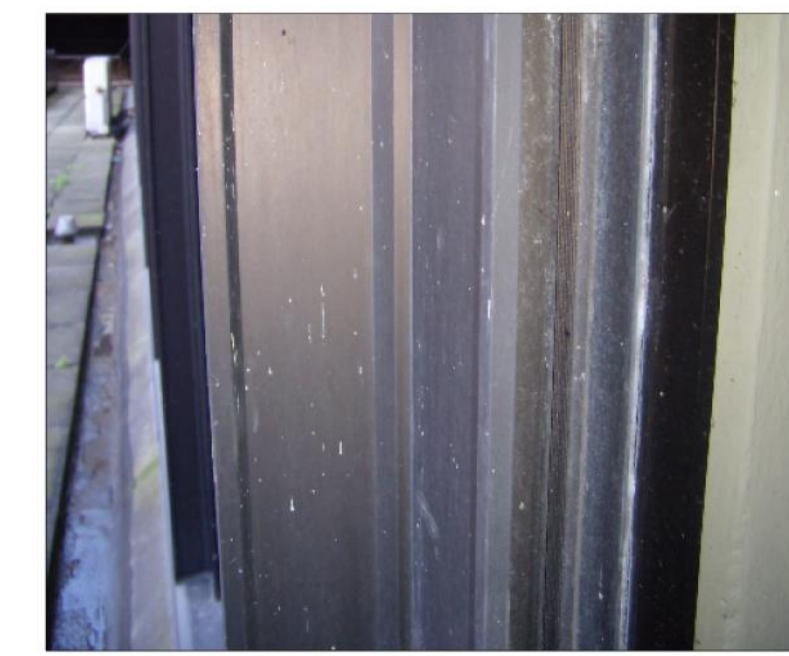
- Notes*
1. Do not scale from this drawing
 2. Work to figured dimensions where shown
 3. Confirm dimensions on site before fabrication or construction - report any discrepancies to CA



Photograph 1

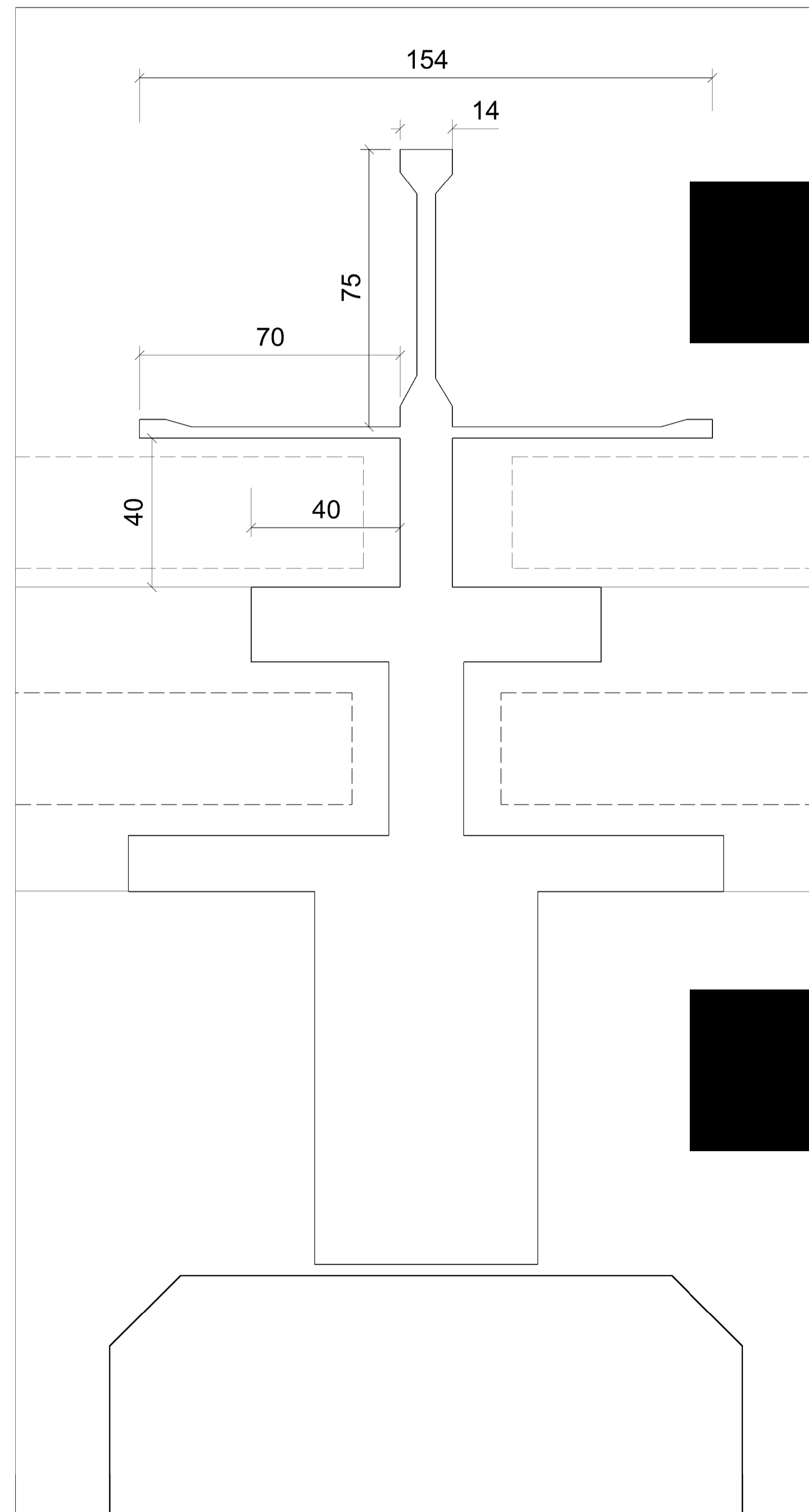


Photograph 2

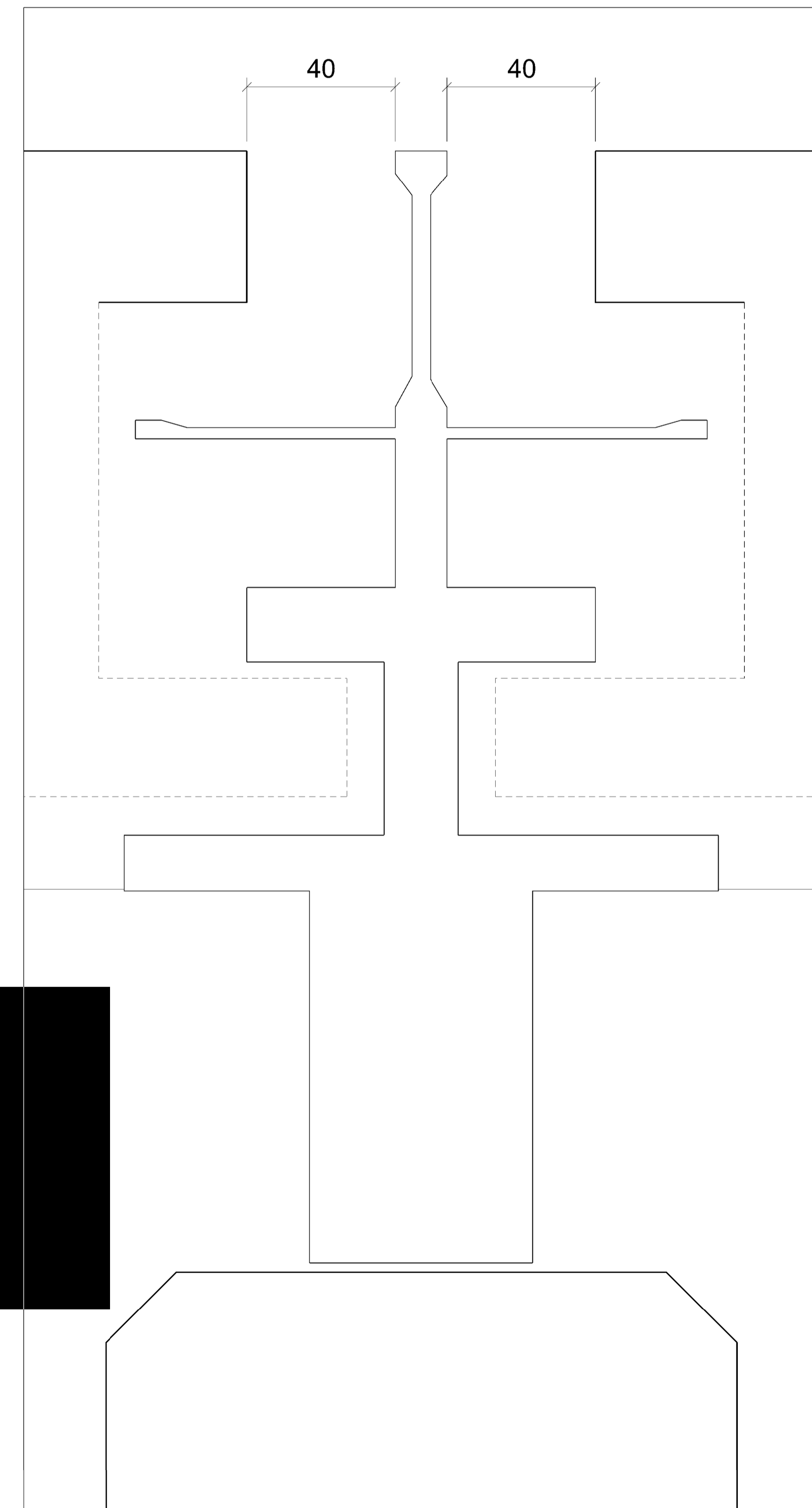


Photograph 3

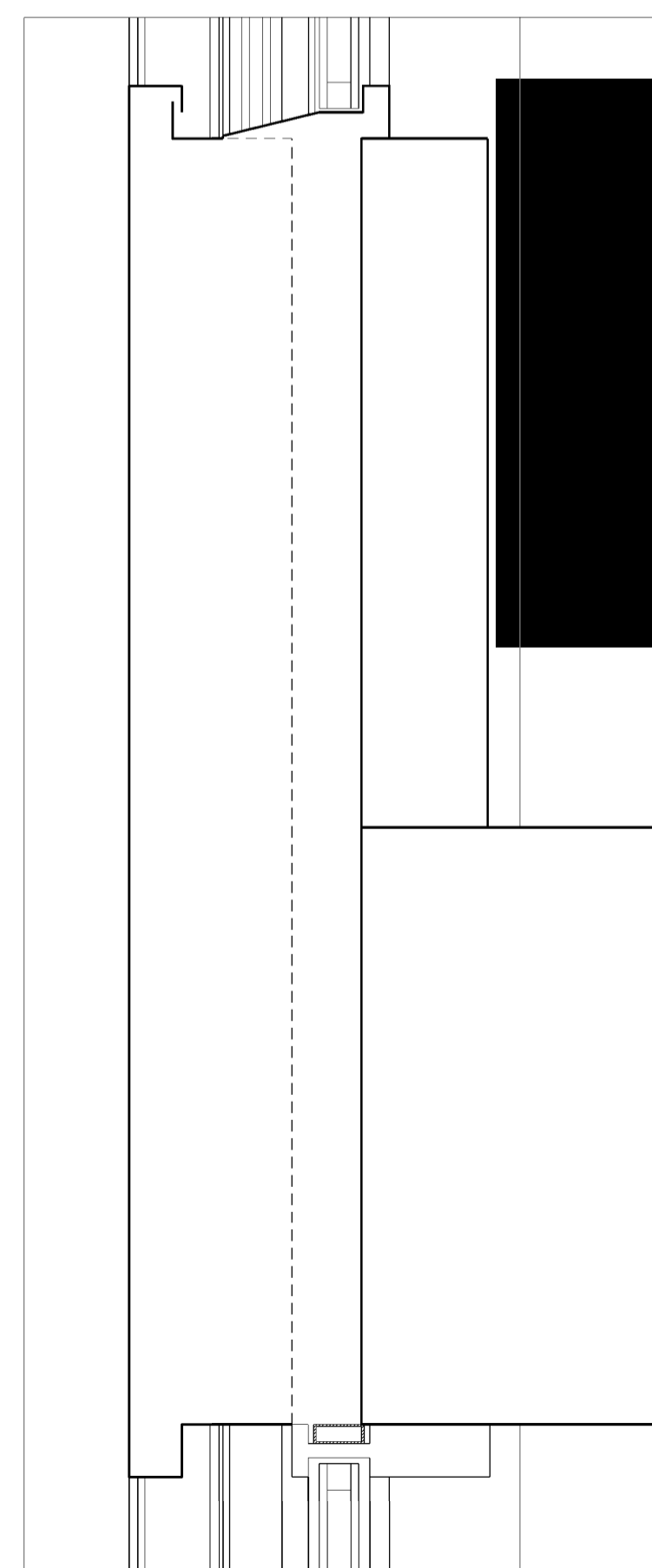
Section C-C 1:1



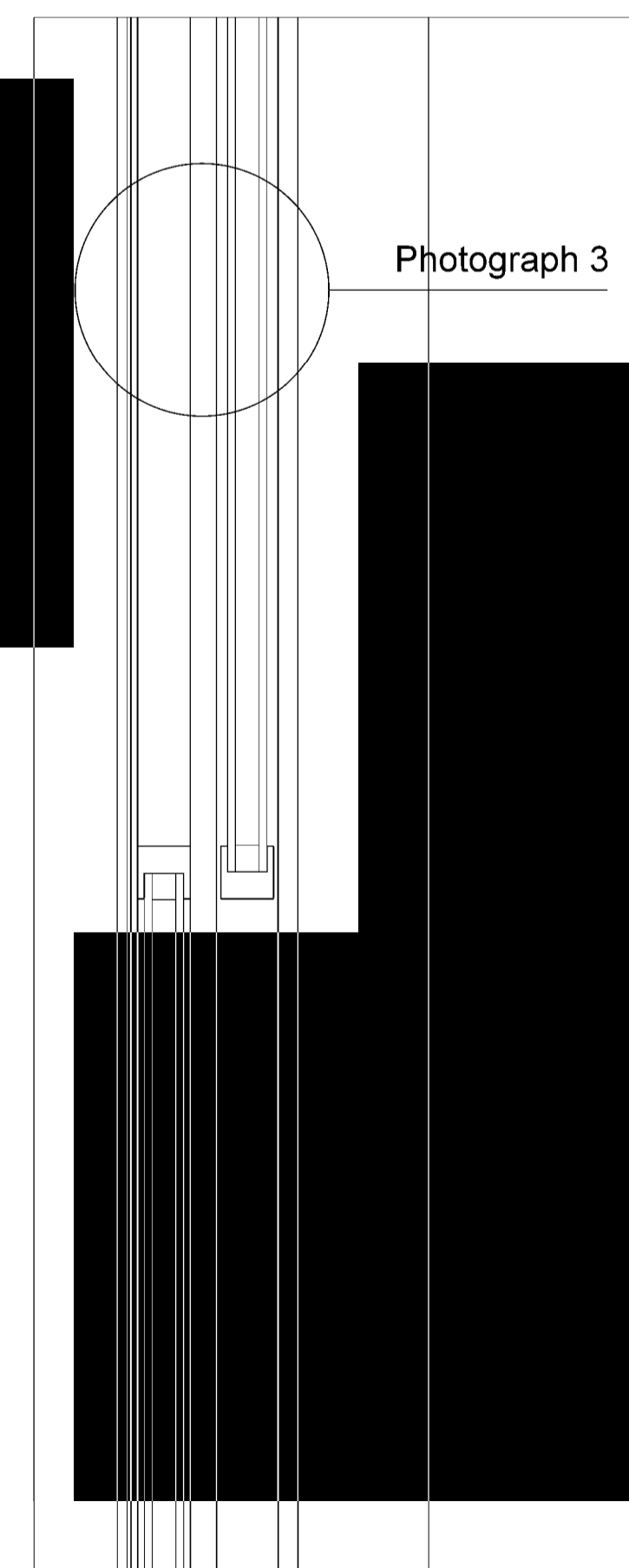
Section D-D 1:1



Section A-A 1:5



Section B-B 1:5



PL0: 30/09/16	First issue, amended proposals for s73 application. - Cantilever over service road reintroduced. - Spur SVI facing facade amended from sloped to stepped with operable windows & planted terraces. - Proposed escape staircase width increased by 400mm as required for fire escape.	SS
rev	date	description
		by
drawing amendments		

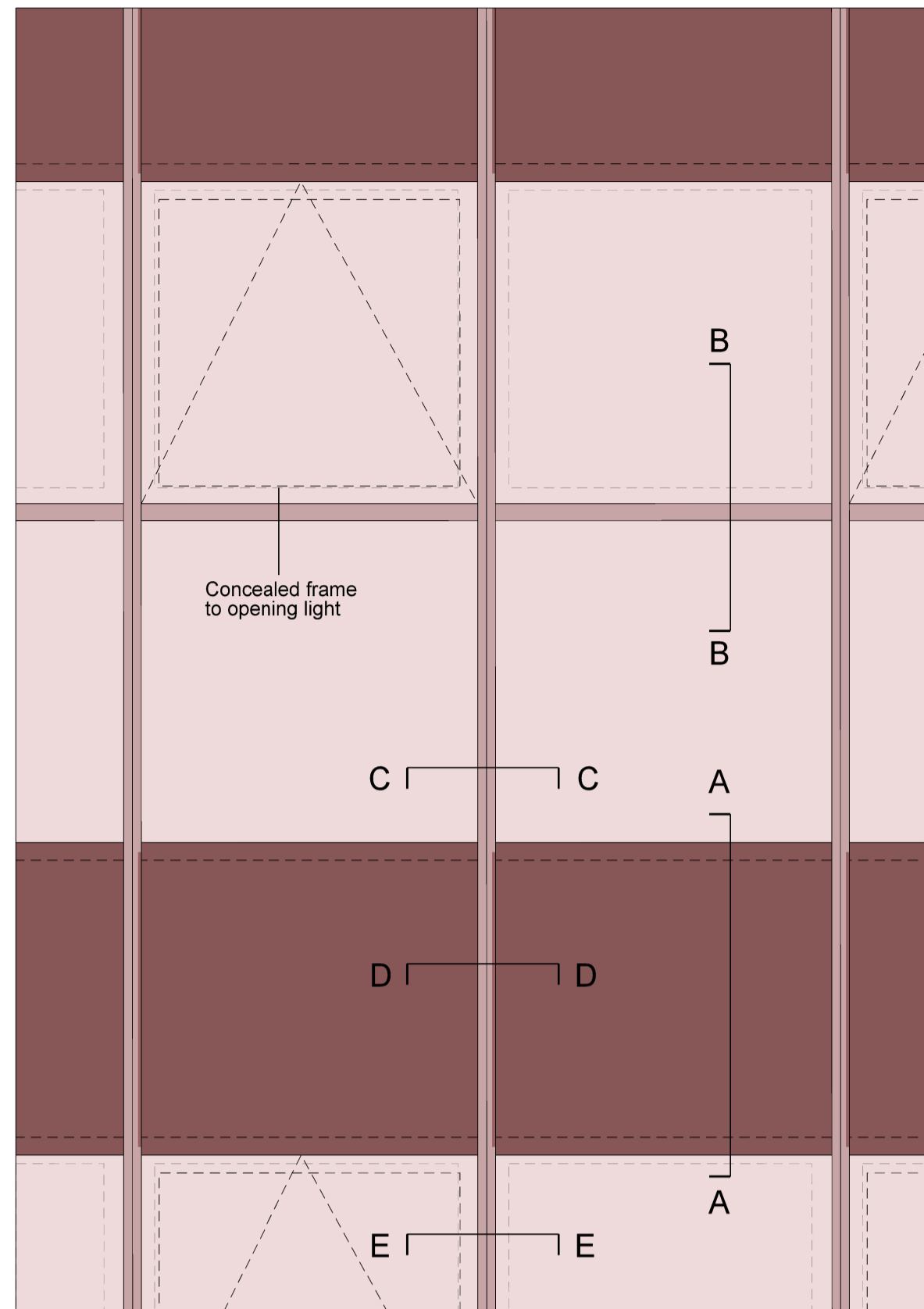
Shepherd Epstein Hunter
Architecture Planning Landscape

Phoenix Yard, 65 Kings Cross Road, London WC1X 9LW
tel: 020 7841 7500 fax: 020 7841 7575
email: architecture@seh.co.uk web: www.seh.co.uk

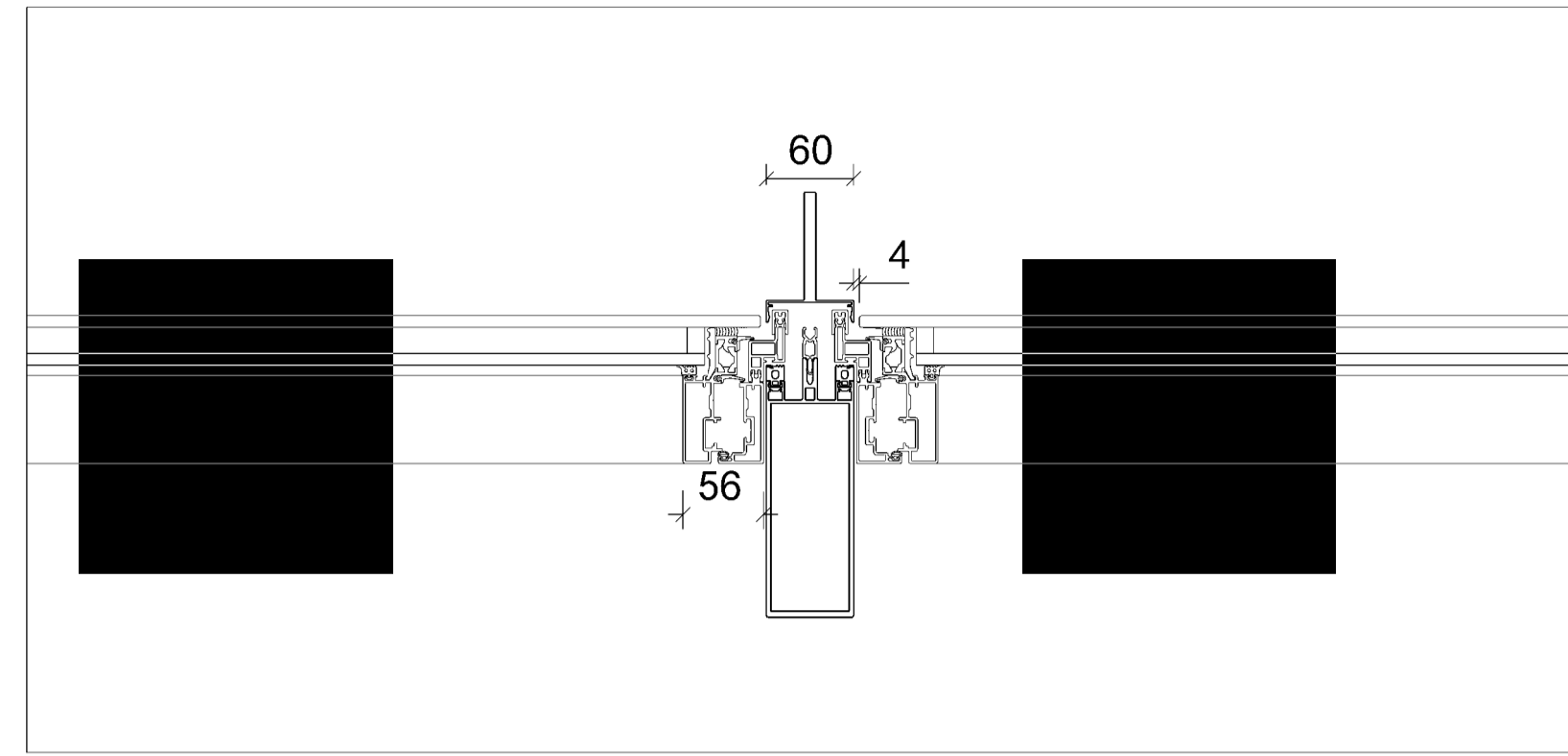
project	Thornhaugh Mews Project	
client	University College London	

drawing status	scale	size
Planning	as shown	A1
drawing	job no.	
Existing facade details	15166	
	drawing no.	rev.
	0161	PL0

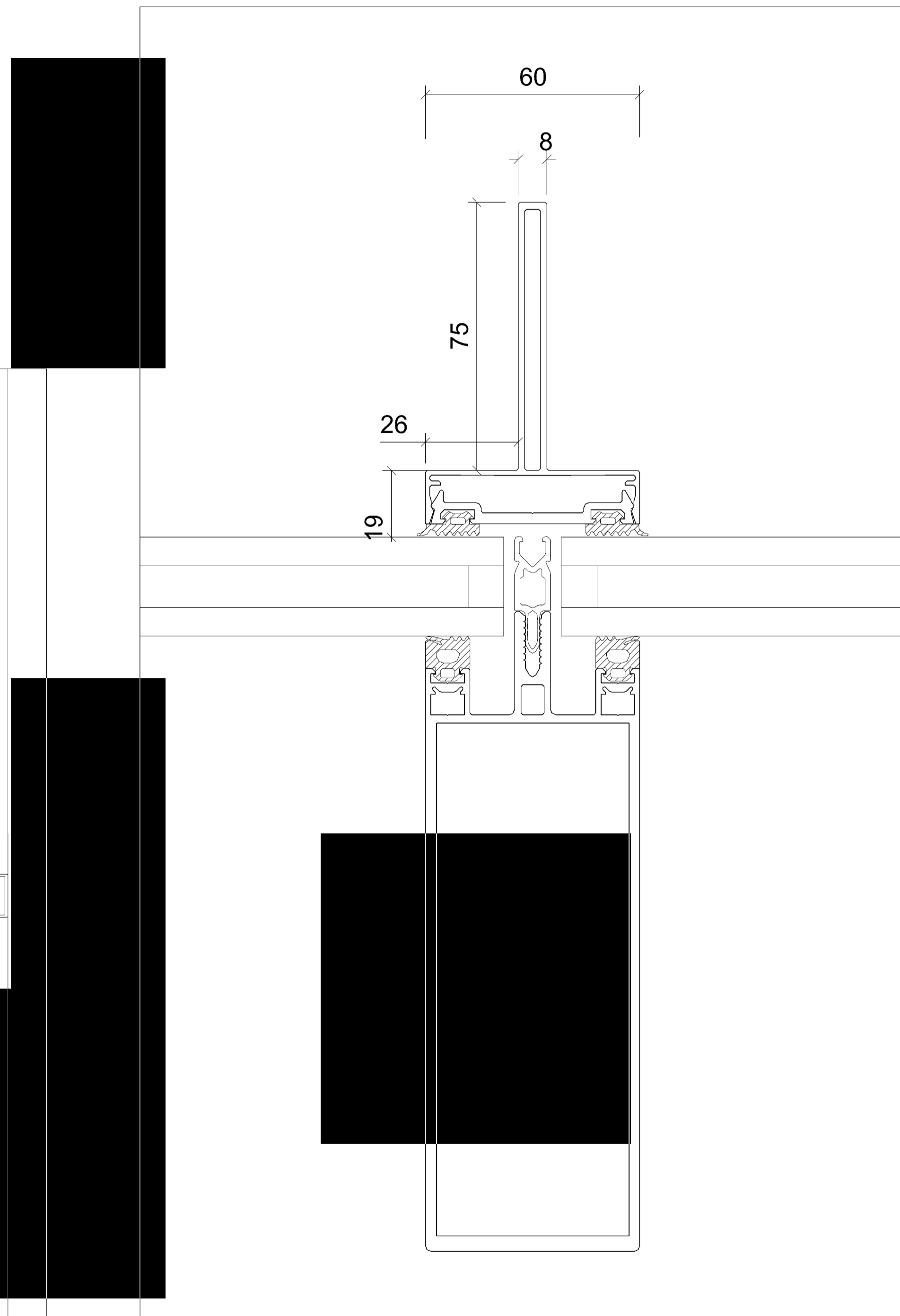
Proposed Elevation 1:20



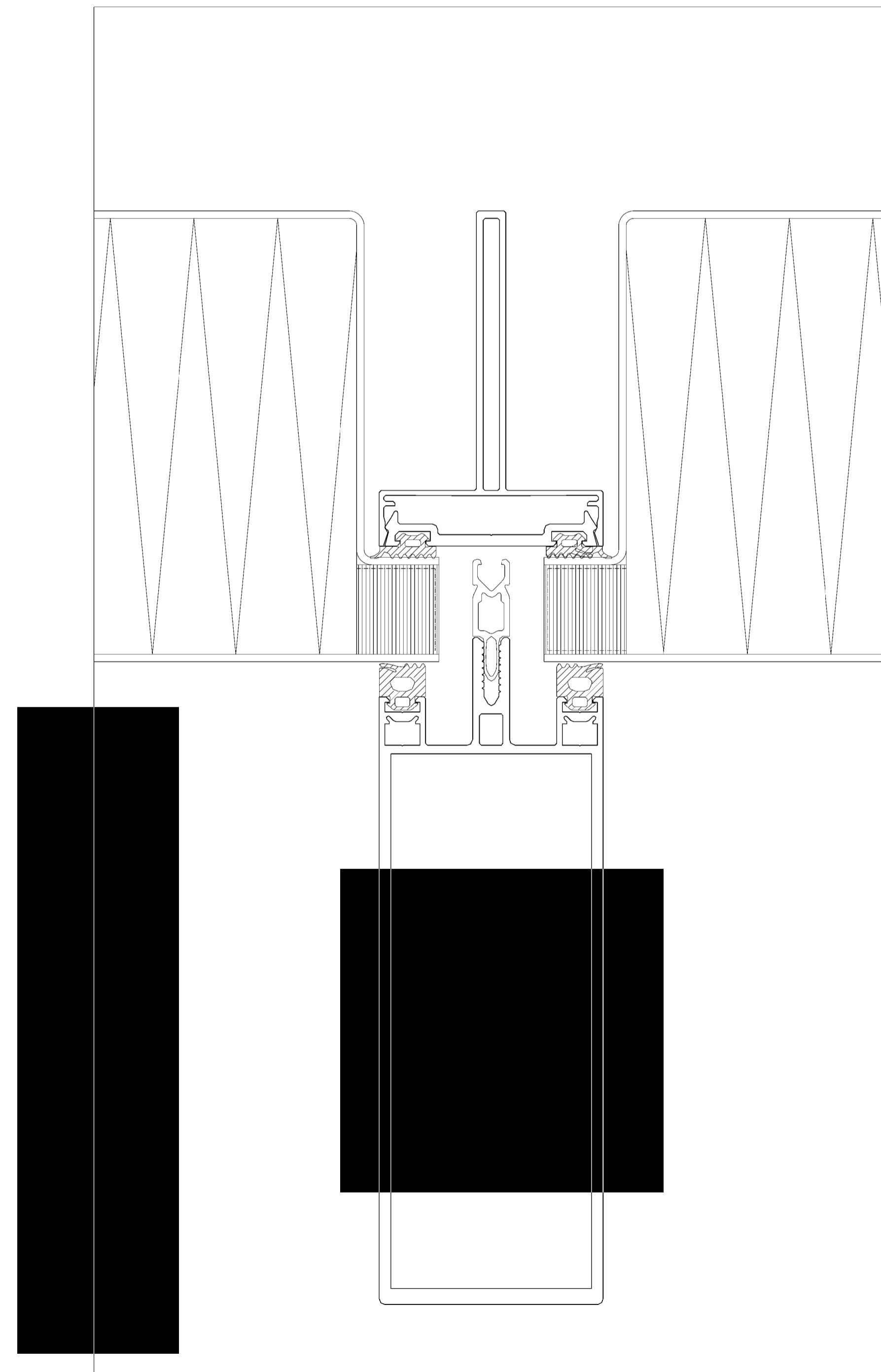
Section E-E 1:5



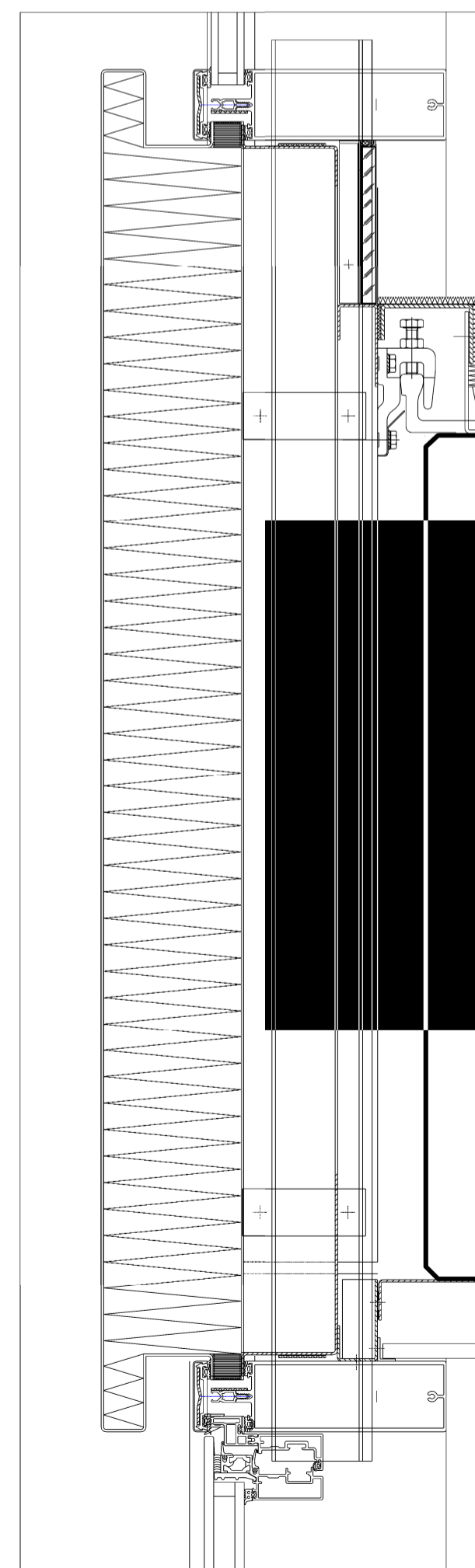
Section C-C 1:1



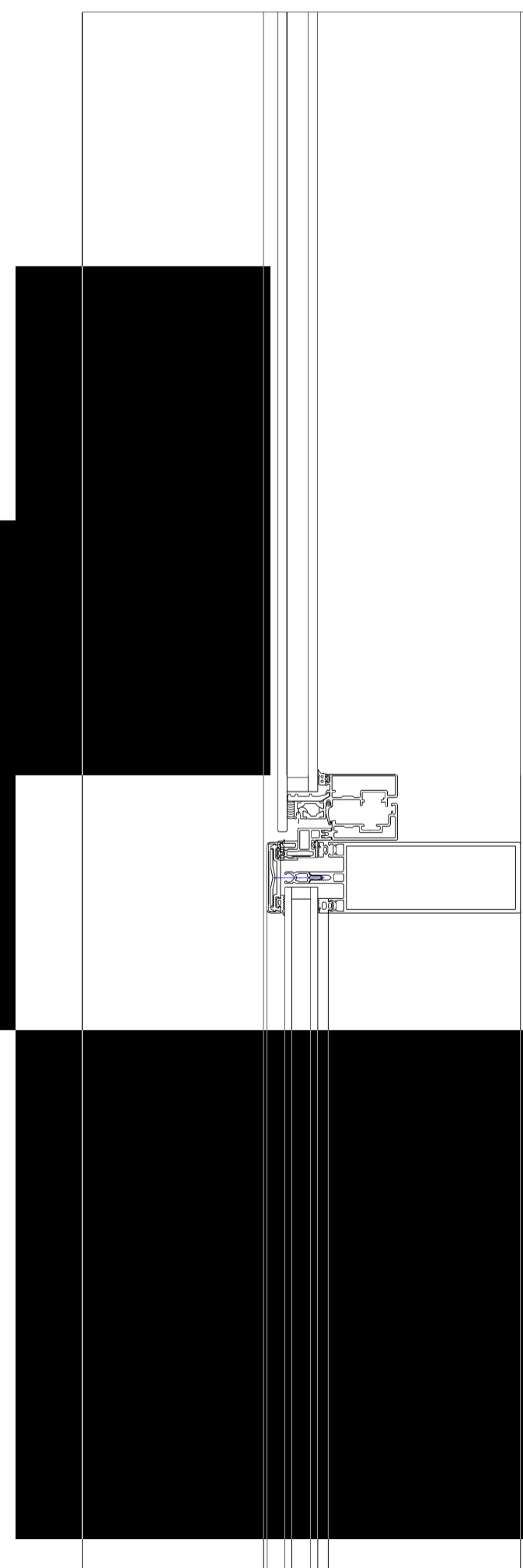
Section D-D 1:1



Section A-A 1:5



Section B-B 1:5



- Notes
1. Do not scale from this drawing
 2. Work to figured dimensions where shown
 3. Confirm dimensions on site before fabrication or construction - report any discrepancies to CA

PL0 30/09/16	First issue, amended proposals for s73 application. - Cantilever over service road reintroduced. - Spur SW facing facade amended from sloped to stepped with operable windows & planted terraces. - Proposed escape staircase width increased by 400mm as required for fire escape.	SS
rev	date	description
		by

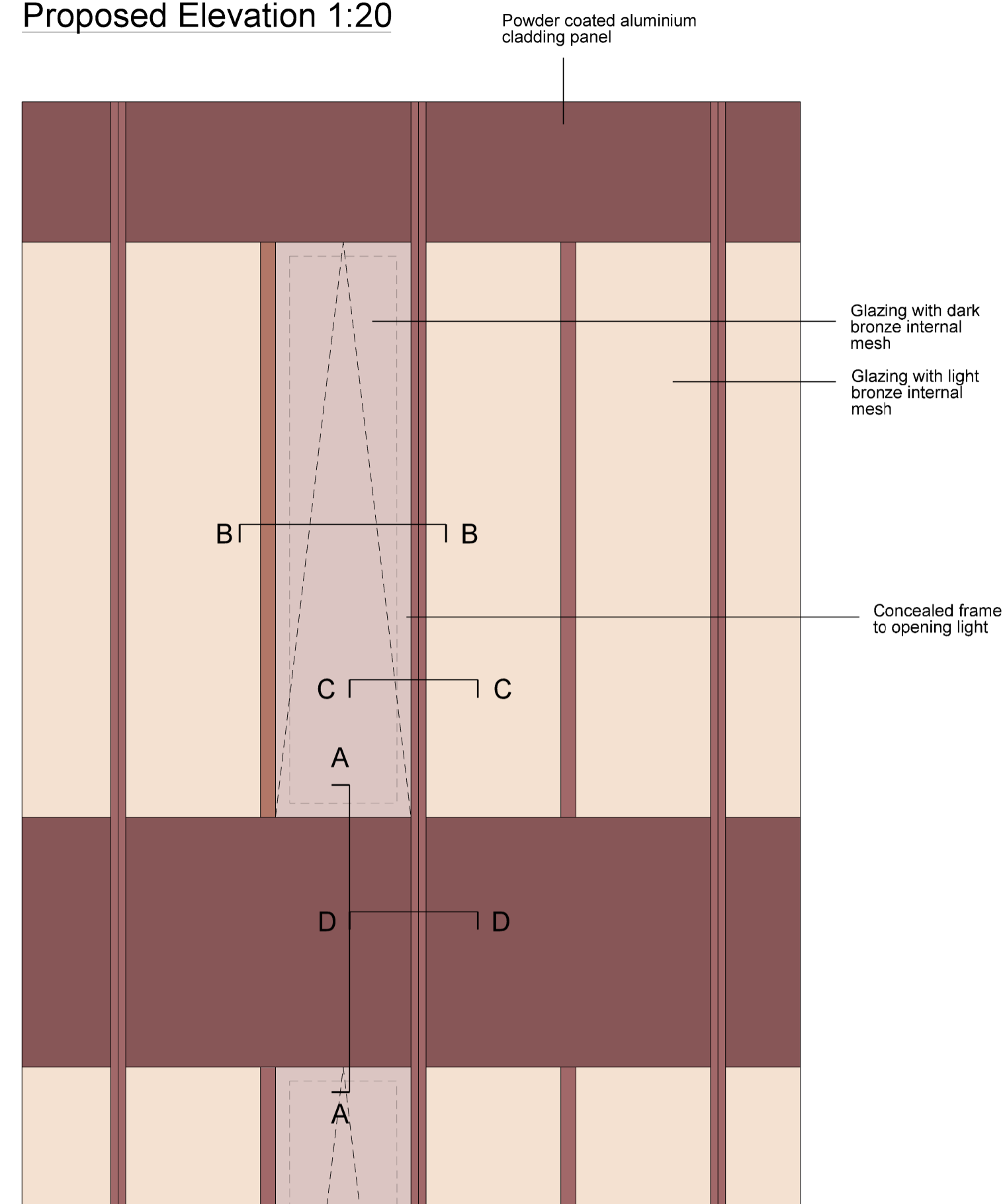
Shepherd Epstein Hunter
Architecture Planning Landscape

Phoenix Yard, 65 Kings Cross Road, London WC1X 9LW
tel: 020 7841 7500 fax: 020 7841 7575
email: architecture@seh.co.uk web: www.seh.co.uk

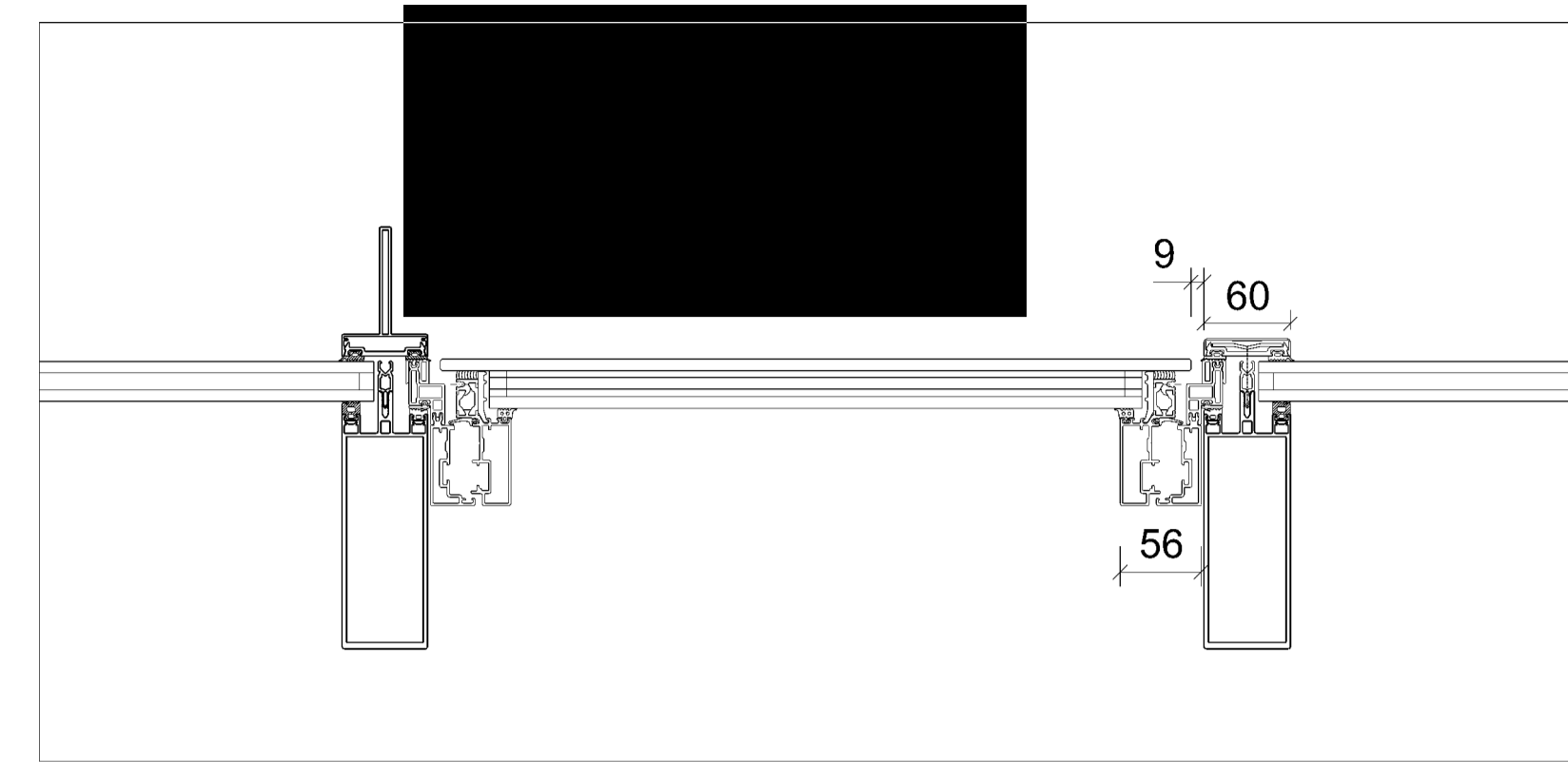
project	Thornhaugh mews Project
client	University College London

drawing status	scale	size
Planning	as shown	A1
drawing	job no.	
Proposed facade details	15166	
Type 1	drawing no.	rev.
	0165	PL0

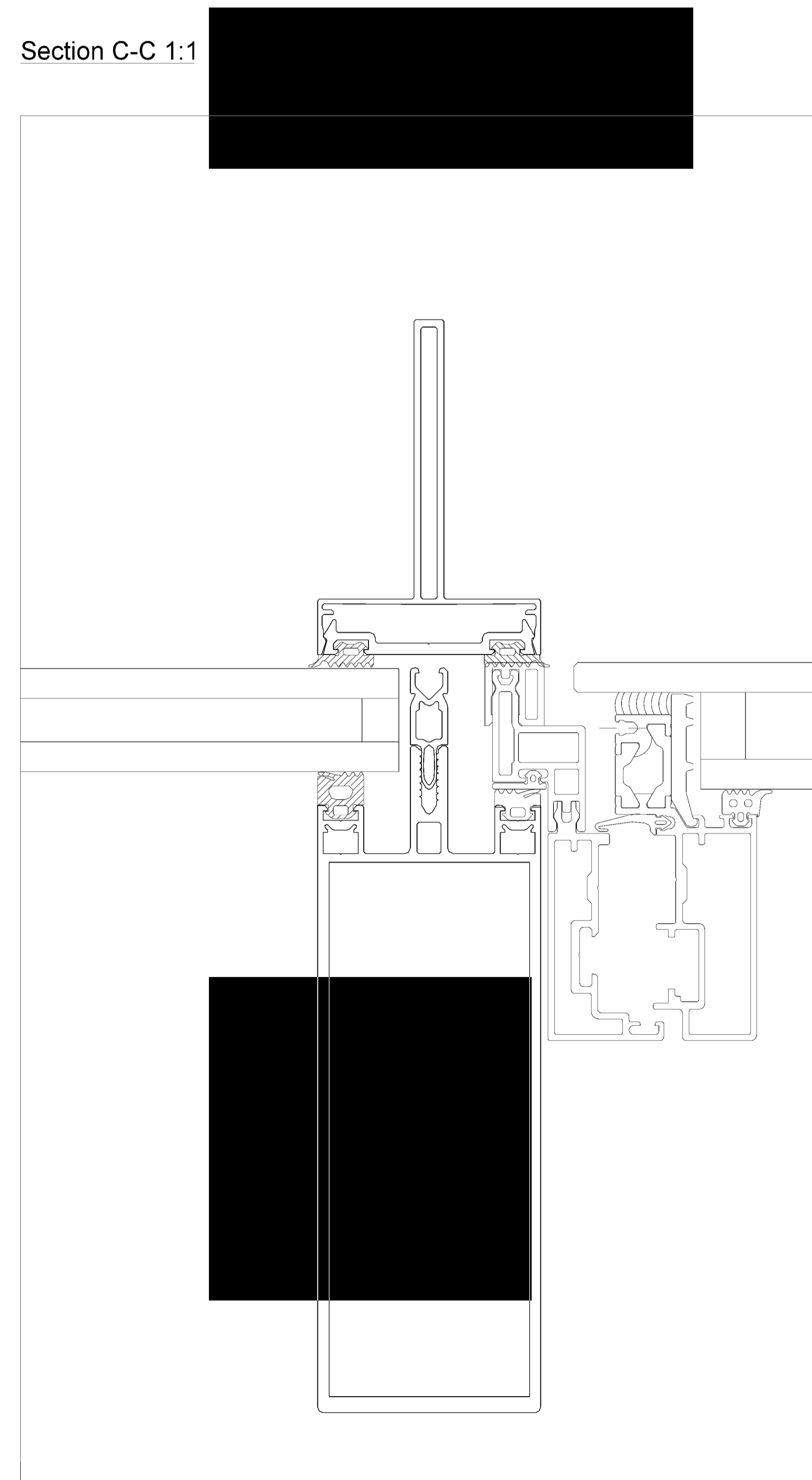
Proposed Elevation 1:20



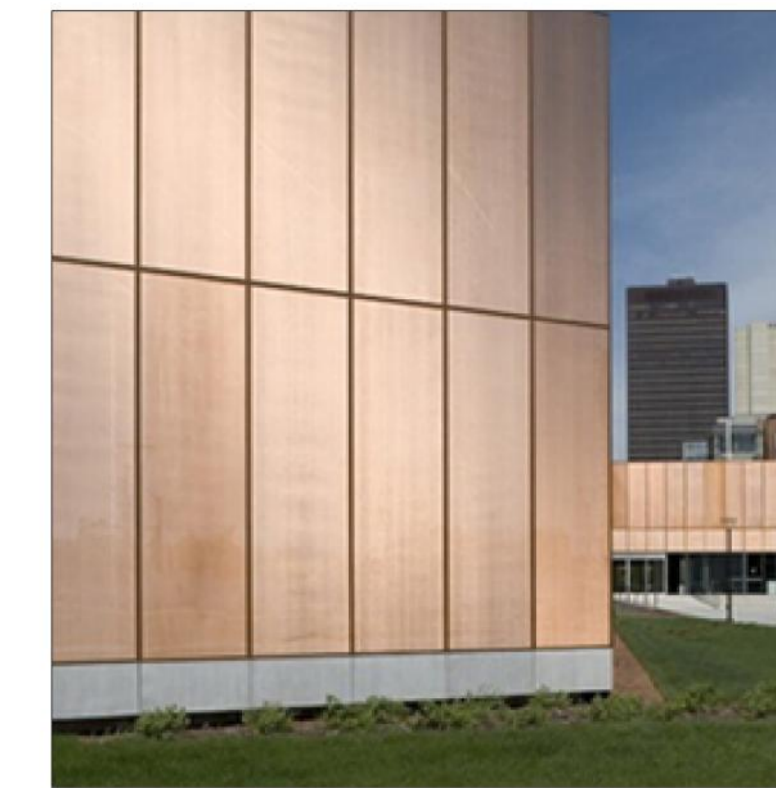
Section B-B 1:5



Section C-C 1:1



Photograph 1 - Okatech example
Des Moines Public Library, David Chipperfield Architects

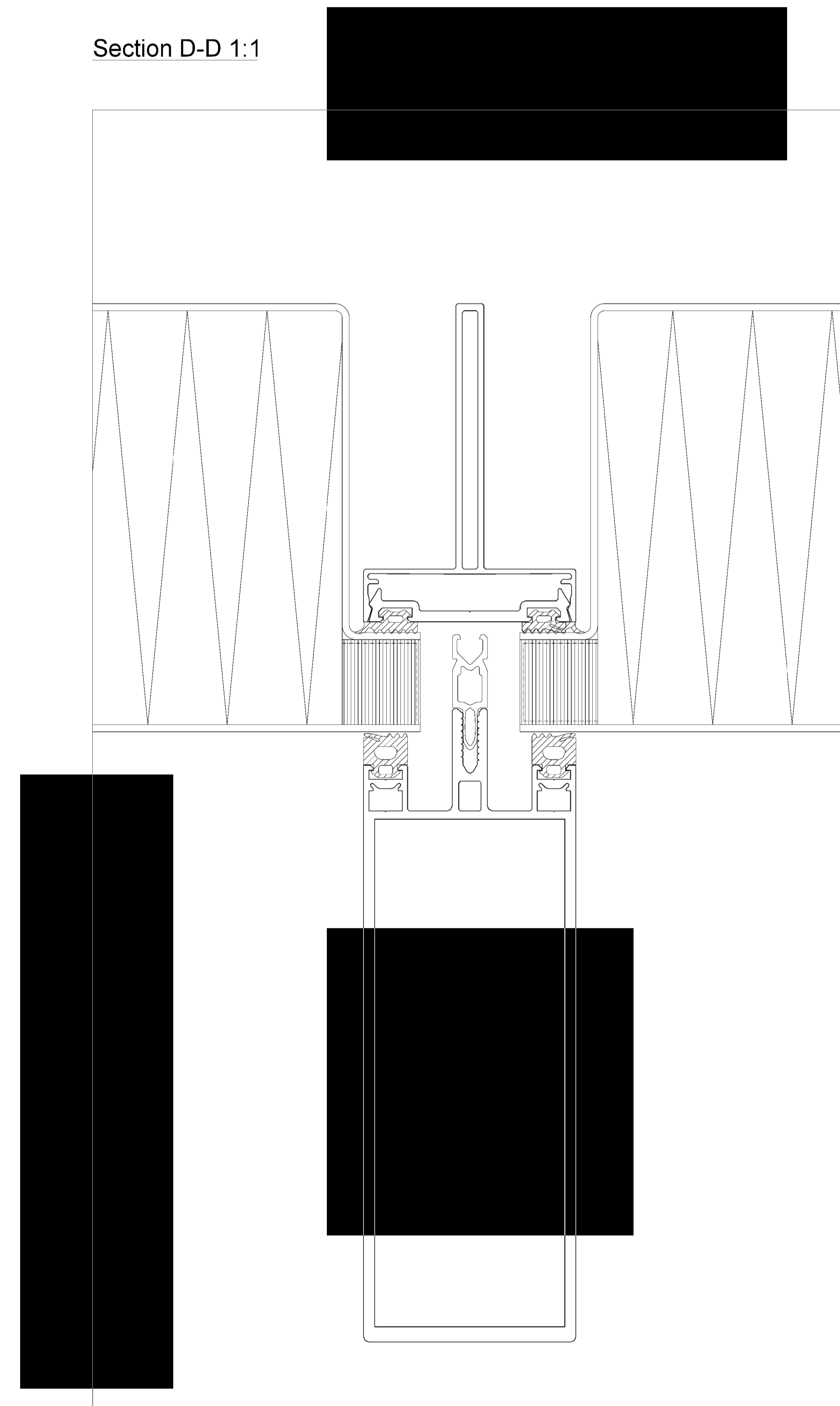


Day

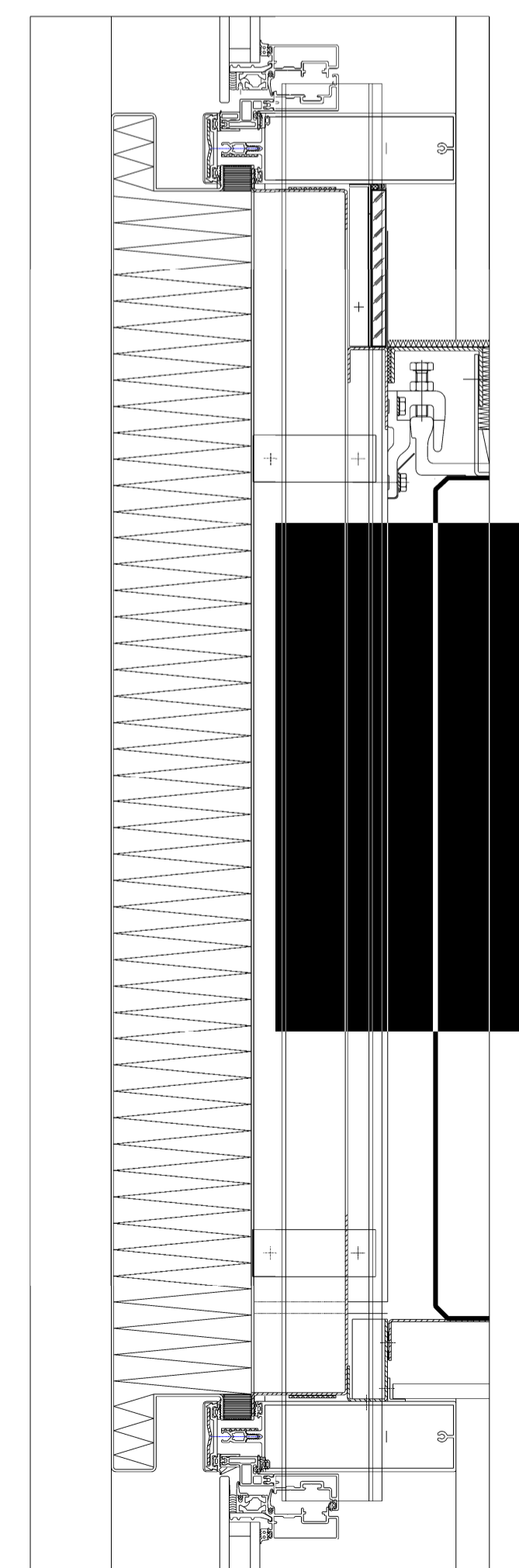


Night

Section D-D 1:1



Section A-A 1:5



- Notes
1. Do not scale from this drawing
 2. Work to figured dimensions where shown
 3. Confirm dimensions on site before fabrication or construction - report any discrepancies to CA

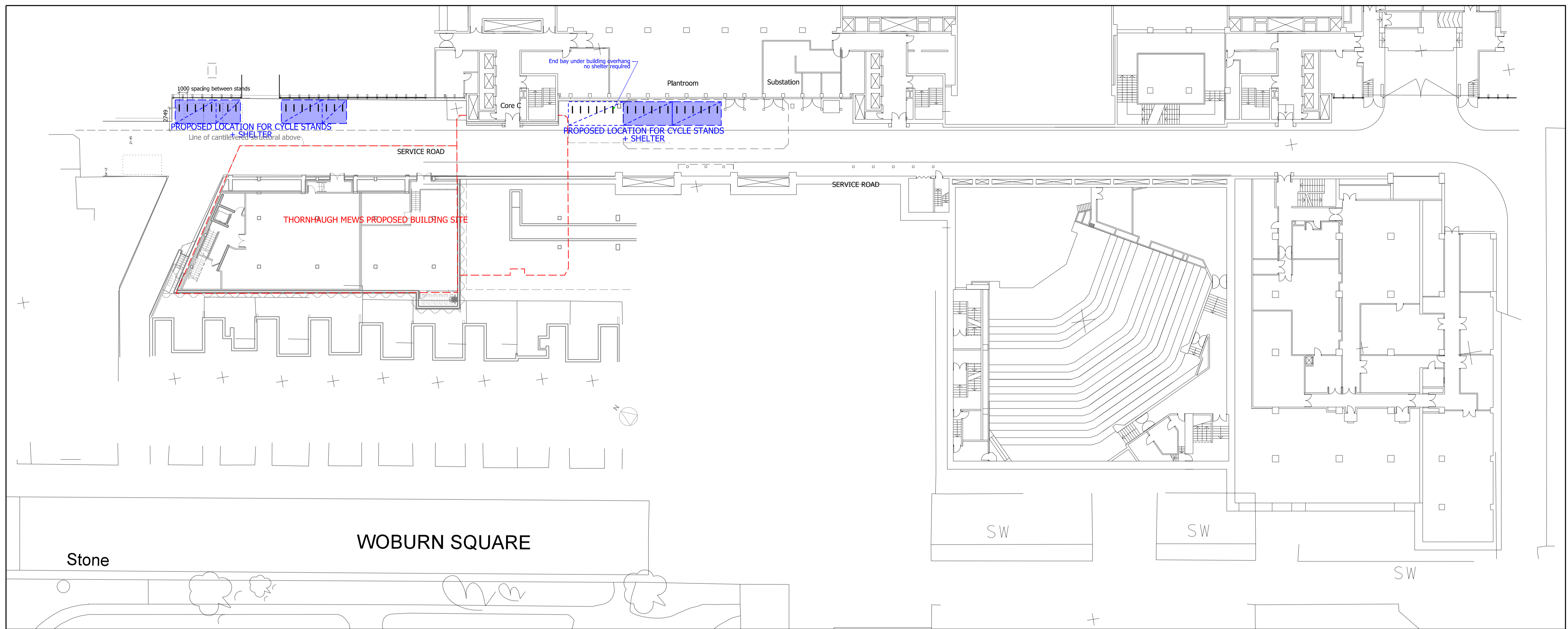
PL0: 30/09/16	First issue, amended proposals for s73 application	SS
-	- Cantilever over service road reintroduced	
-	- Spur SVI facing facade amended from sloped to stepped with operable windows & planted terraces	
-	- Proposed escape staircase width increased by 400mm as required for fire escape	
rev	date	description
drawing amendments		

Shepherd Epstein Hunter
Architecture Planning Landscape

Phoenix Yard, 65 Kings Cross Road, London WC1X 9LW
tel: 020 7841 7500 fax: 020 7841 7575
email: architecture@seh.co.uk web: www.seh.co.uk

project	Thornhaugh mews Project	
client	University College London	

drawing status	scale	size
Planning	as shown	A1
drawing	job no.	
Proposed facade details	15166	
Type 2	drawing no.	rev.
	0166	PL0

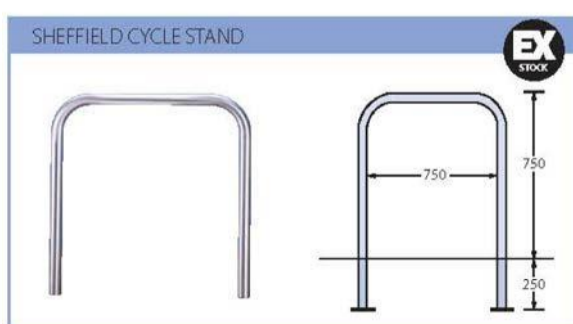


ABOVE: SITE PLAN OF SERVICE ROAD SHOWING PROPOSED LOCATIONS FOR 68 BICYCLE PARKING SPACES

PROPOSED SHEFFIELD STAND STYLE

Steel and Stainless Steel Cycle Parking

OLLERTON



- Sheffield Cycle Stands are available galvanised, galvanised and powder coated and in grade 316L stainless steel.
- Colour Options: A full standard range of RAL colours is available please see page 425.
- Fixing Options: Sheffield Cycle Stands can be supplied with either ground (foot) fixing or base plate fixing.
- Bespoke Options: Sheffield Cycle Stands can be adapted to client requirements.



354

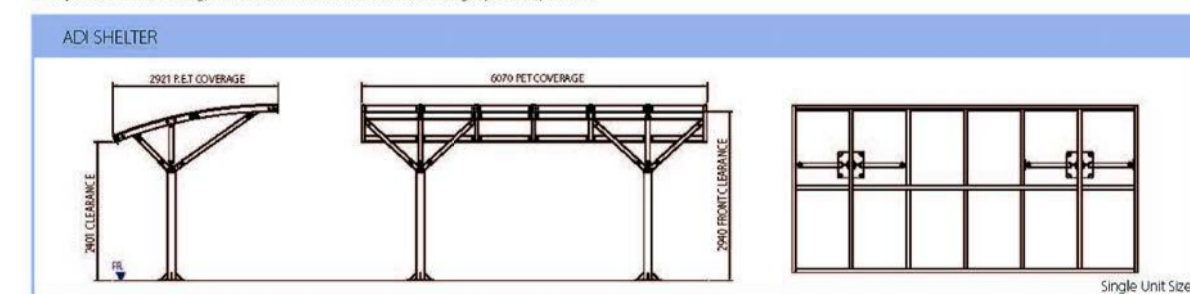
PROPOSED SHEFFIELD SHELTER STYLE

Steel Cycle Storage

OLLERTON



- The versatile design of the ADI can be combined with cycle stands or racks to create a versatile cycle shelter. Common arrangements include back to back and facing, allowing coverage for larger areas.
- The standard design features two single support columns which are 4m apart allowing cycle racks or stands to be placed in between. The support columns branch out into four smaller arms which connected to the roof framework of a flat, pitched or curved roof.
- Cycle Storage: Single unit or compound for up to 20 to 100+ cycles. For Cycle stands we recommend Sheffield cycle stands or motor scooters stands to expand the capabilities of the shelter.
- Options: PE To add 3 m² fire retardant odour/roofings to shelter, pitched or mono curve.
- Size: 6m x 3m standard.
- Material: Supporting columns, arms and roofing frame are manufactured from structural grade mild steel.
- Finishes: Options include: 1. Galvanised, 2. Galvanised and powder coated, 3. Zinc-rich primer and top powder coated using the Akzo Nobel Cromax Extra Life System.
- Warranty: 10 year paint warranty.
- Installation: Sub-surface or base plate fixed.



Product	Height (mm)	Length (mm)	Width (mm)	Fixing	Material	Finish	Options	Weight (kg)	Lead Time (wks)
ADI	3000	6000/6000	2901	Sub-surface or base plate	Structural grade mild steel	Galvanised, Galvanised and powder coated, Zinc-rich primer and top powder coated	PE To add 3 m ² fire retardant odour/roofings to shelter, pitched or mono curve	1000	4-6

371

- Do not scale from this drawing
- Work to figured dimensions where shown
- Confirm dimensions on site before fabrication or construction - report any discrepancies to CA

PL0	13/10/16	First issue, amended proposals for s73 application.	SS
rev	date	description	by

Shepherd Epstein Hunter
Architecture Planning Landscape

Phoenix Yard, 65 Kings Cross Road, London WC1X 9LW
tel: 020 7841 7500 fax: 020 7841 7575
email: architecture@seh.co.uk web: www.seh.co.uk

Project: Thornhaugh Mews Project
Client: University College London

drawing status	scale	size
Planning	1:100	A1
drawing	job no.	15166
Proposed Cycle Parking	drawing no.	0195
	rev.	PL0