

- Materials Key**
1. Aluminium curtain walling
 2. Aluminium panel, bronzed finish to match existing
 3. Concrete cladding panels
 4. Aluminium framed windows
 5. Triple glazing with integral shading mesh - type 1, light bronze
 6. Triple glazing with integral shading mesh - type 2, dark bronze
 7. Clear double glazing
 8. Aluminium grille
 9. Clear glass balustrade
 10. Powder coated, galvanised steel handrail bronzed to match existing
 11. Glass faced insulated opaque panel - type 2, dark bronze

PL0	30/08/16	First issue, amended proposals for s73 application. - Cantilever over service road reintroduced - Spur SVV facing facade amended from sloped to stepped with openable windows & planted terraces. - Proposed escape staircore width increased by 400mm as required for fire escape.	SS
rev	date	description	by
-	-	-	-
drawing amendments			

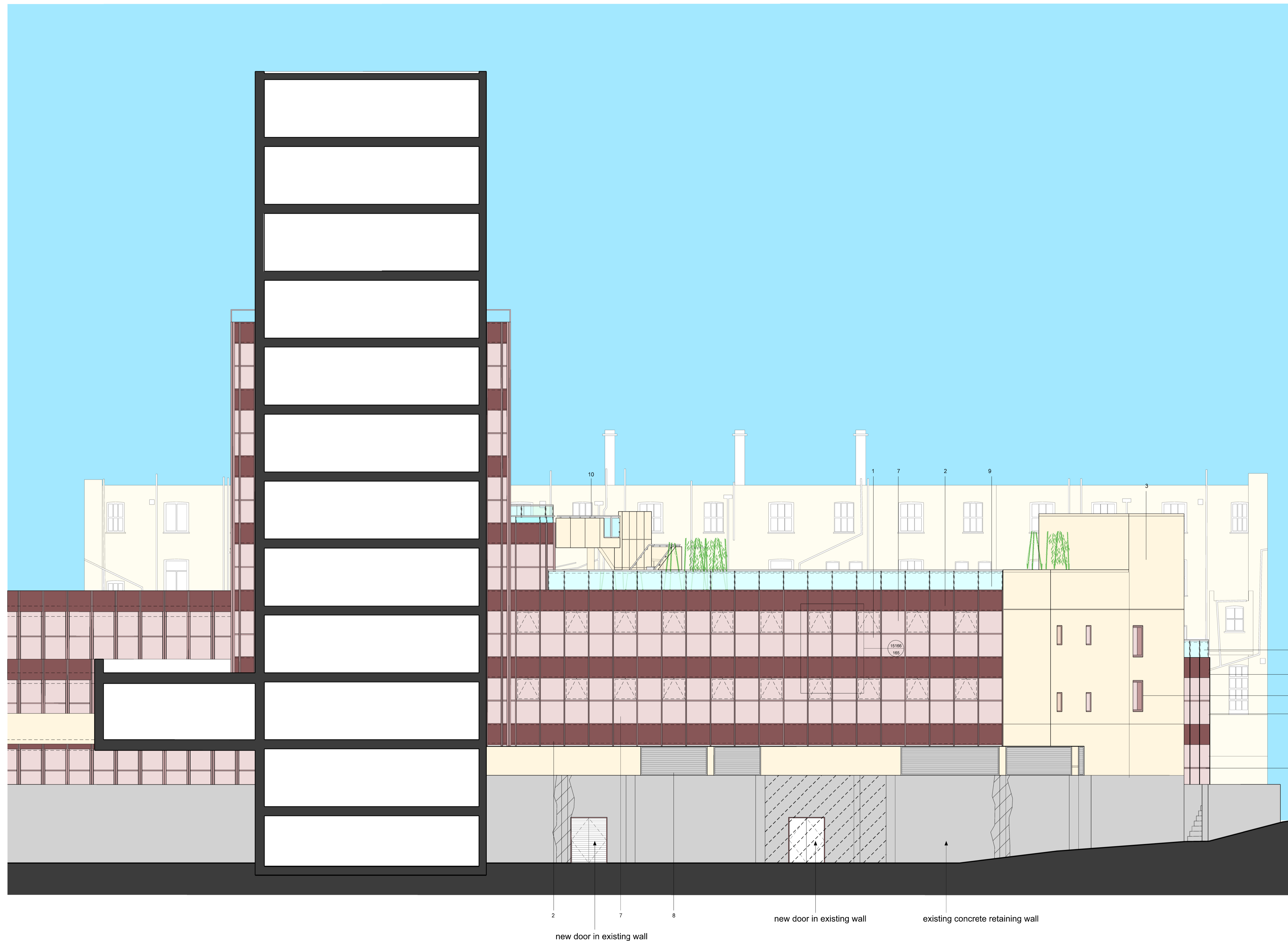
Shepherd Epstein Hunter
Architecture Planning Landscape

Phoenix Yard, 65 Kings Cross Road, London WC1X 9LW
tel: 020 7841 7500 fax: 020 7841 7575
email: architecture@seh.co.uk web: www.seh.co.uk

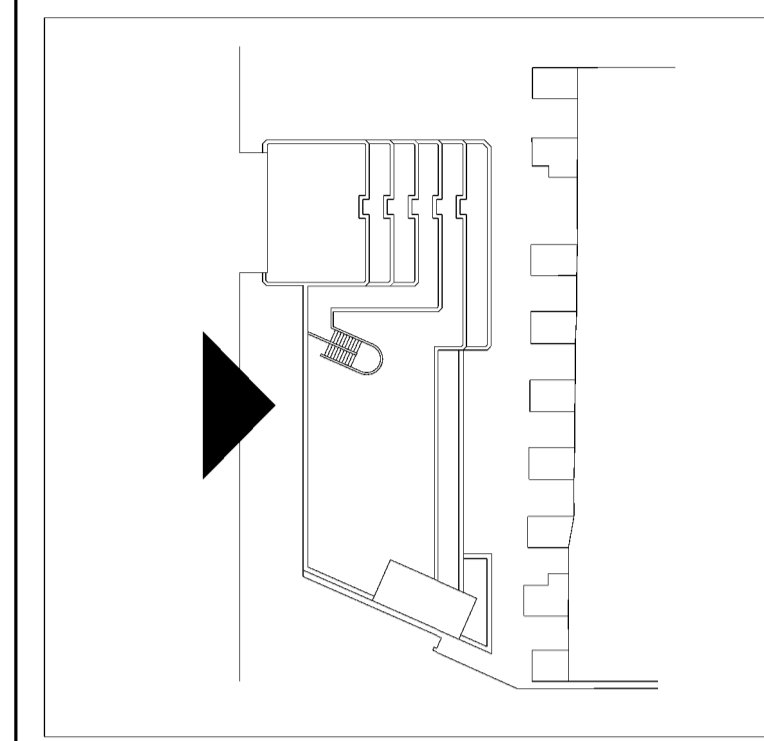
project
Thornhaugh Mews Project

client
University College London

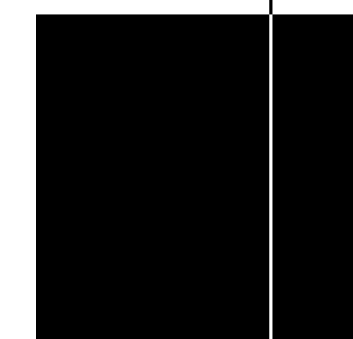
drawing status	scale	size
PLANNING	1:100	A1
drawing	job no.	
Proposed Elevation 2	15166	
	drawing no.	rev.
	0142	PL0



- Notes
1. Do not scale from this drawing
 2. Work to figured dimensions where shown
 3. Confirm dimensions on site before fabrication or construction - report any discrepancies to CA



- Materials Key
1. Aluminium curtain walling
 2. Aluminium panel, bronzed finish to match existing
 3. Concrete cladding panels
 4. Aluminium framed windows
 5. Triple glazing with integral shading mesh - type 1, light bronze
 6. Triple glazing with integral shading mesh - type 2, dark bronze
 7. Clear double glazing
 8. Aluminium grille
 9. Clear glass balustrade
 10. Powder coated, galvanised steel handrail bronzed to match existing
 11. Glass faced insulated opaque panel - type 2, dark bronze



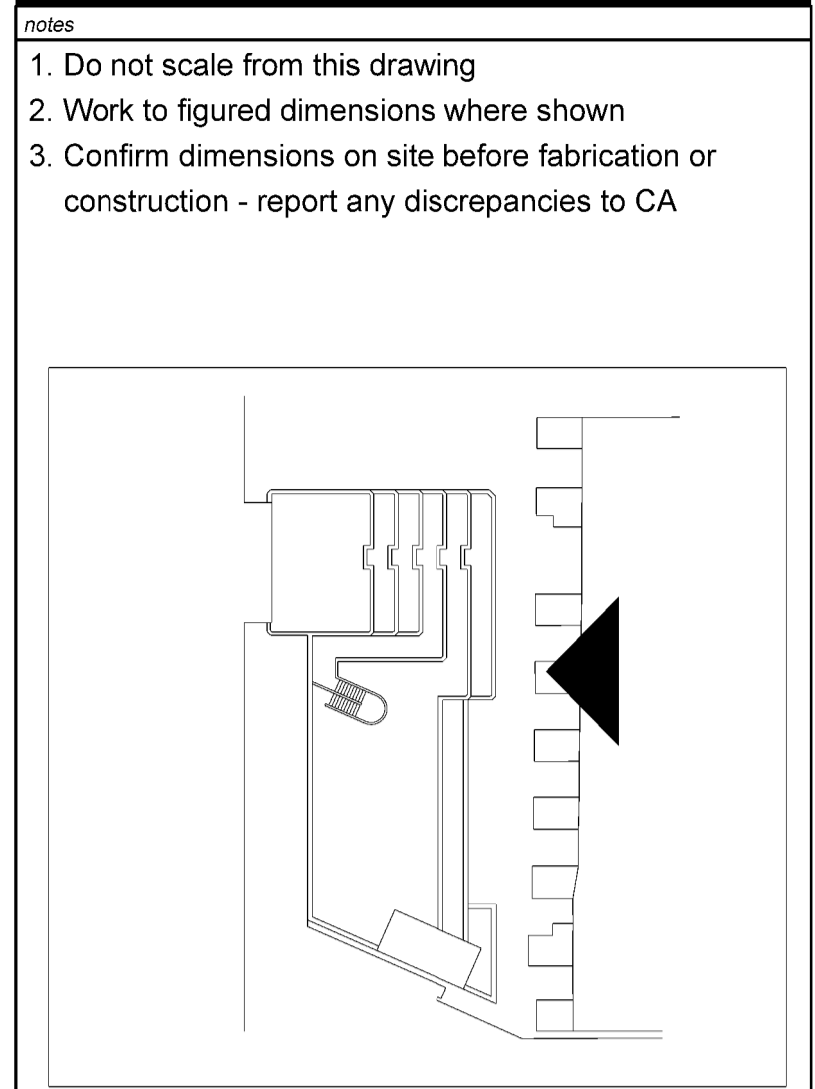
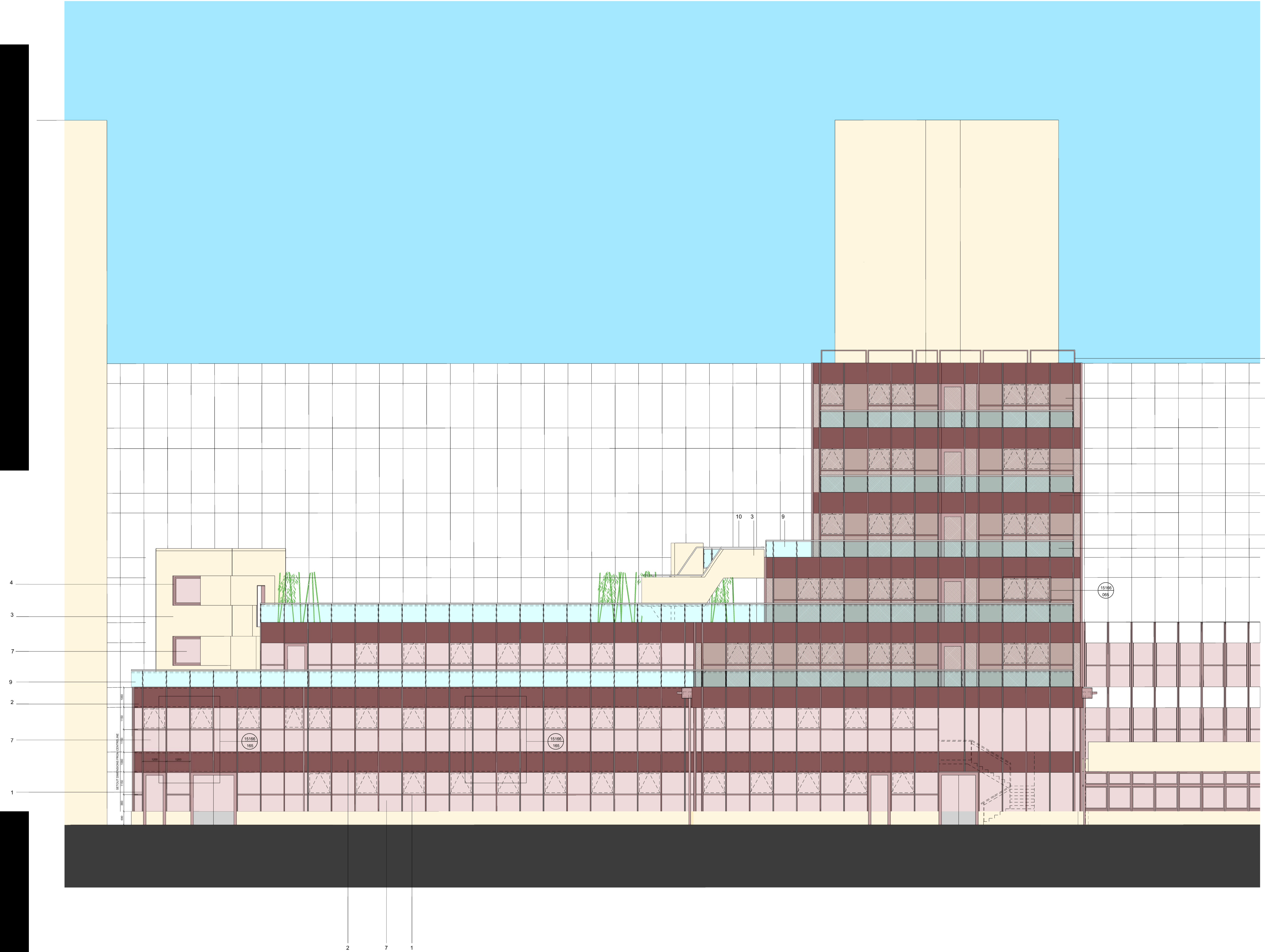
PL0: 30/09/16	First issue, amended proposals for s73 application. - Cantilever over service road reintroduced. - Spur SVI facing facade amended from sloped to stepped with openable windows & planted terraces. - Proposed escape staircase width increased by 400mm as required for fire escapes.	SS
rev	date	description
		by

Shepherd Epstein Hunter
Architecture Planning Landscape

Phoenix Yard, 65 Kings Cross Road, London WC1X 9LW
tel: 020 7841 7500 fax: 020 7841 7575
email: architecture@seh.co.uk web: www.seh.co.uk

project
Thornhaugh Mews Project
client
University College London

drawing status	scale	size
Planning	1:100	A1
drawing	job no.	
Proposed Elevation 3	15166	
	drawing no.	rev.
	0143	PL0



- Materials Key**
1. Aluminium curtain walling
 2. Aluminium panel, bronzed finish to match existing
 3. Concrete cladding panels
 4. Aluminium framed windows
 5. Triple glazing with integral shading mesh - type 1, light bronze
 6. Triple glazing with integral shading mesh - type 2, dark bronze
 7. Clear double glazing
 8. Aluminium grille
 9. Clear glass balustrade
 10. Powder coated, galvanised steel handrail bronzed to match existing
 11. Glass faced insulated opaque panel - type 2, dark bronze

PL0 30/09/16 First issue, amended proposals for a73 application.
 -Cantilever over service road reintroduced
 -Spur SW facing facade amended from sloped to stepped with operable windows & planted terraces.
 -Proposed escape staircase width increased by 400mm as required for fire escape.

rev	date	description	by
-	-	-	-

drawing amendments

Shepherd Epstein Hunter
 Architecture Planning Landscape

Phoenix Yard, 65 Kings Cross Road, London WC1X 9LW
 tel: 020 7841 7500 fax: 020 7841 7575
 email: architecture@seh.co.uk web: www.seh.co.uk

project
Thornhaugh Mews Project

client
University College London

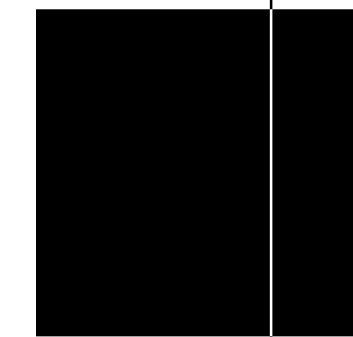
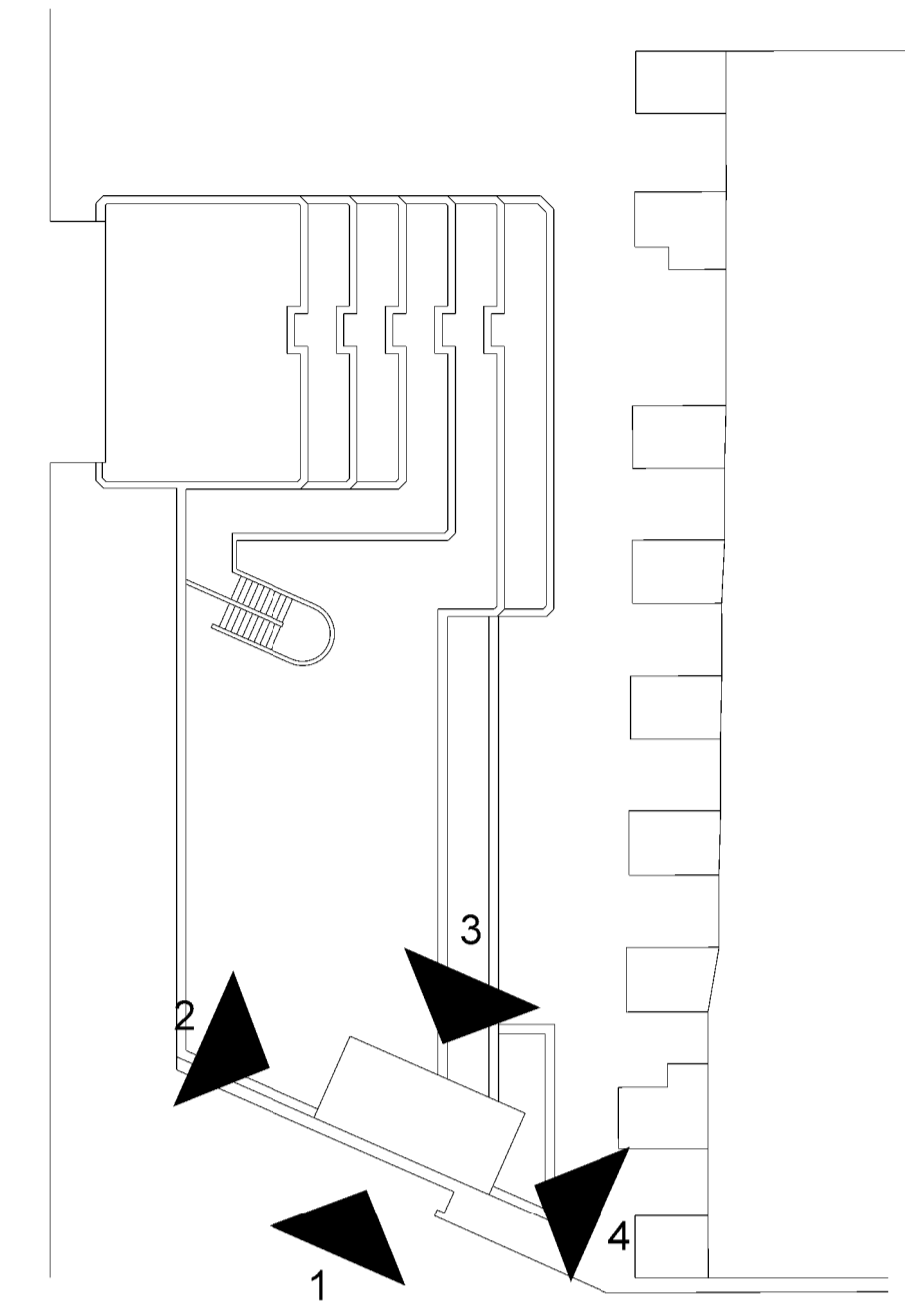
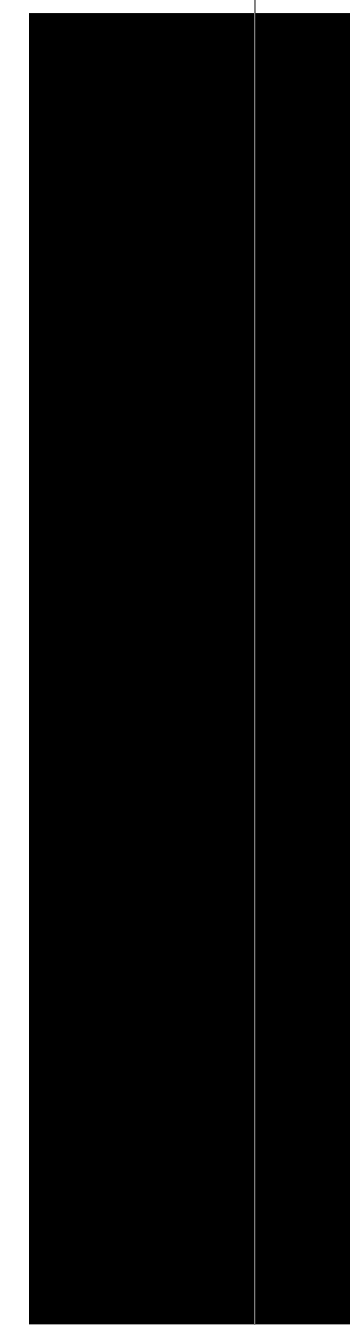
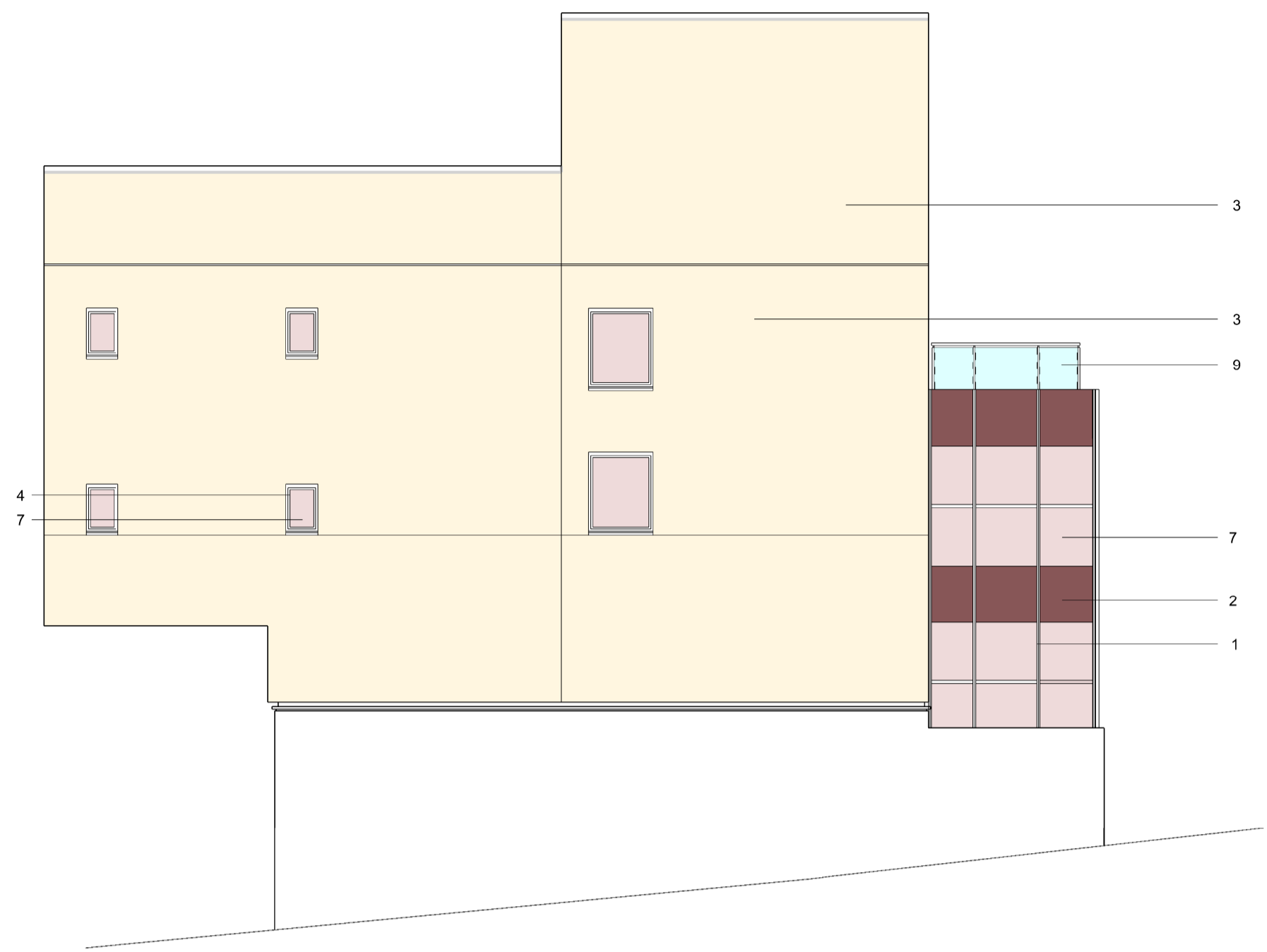
drawing status	scale	size
Planning	1:100	A1
drawing	job no.	15166
Proposed Elevation 4	drawing no.	0144
	rev.	PL0

Notes

1. Do not scale from this drawing
2. Work to figured dimensions where shown
3. Confirm dimensions on site before fabrication or construction - report any discrepancies to CA

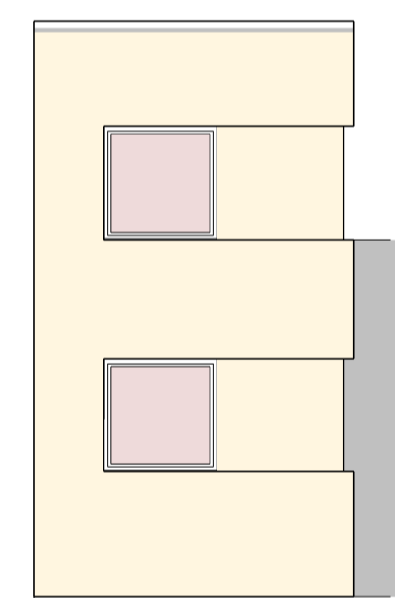
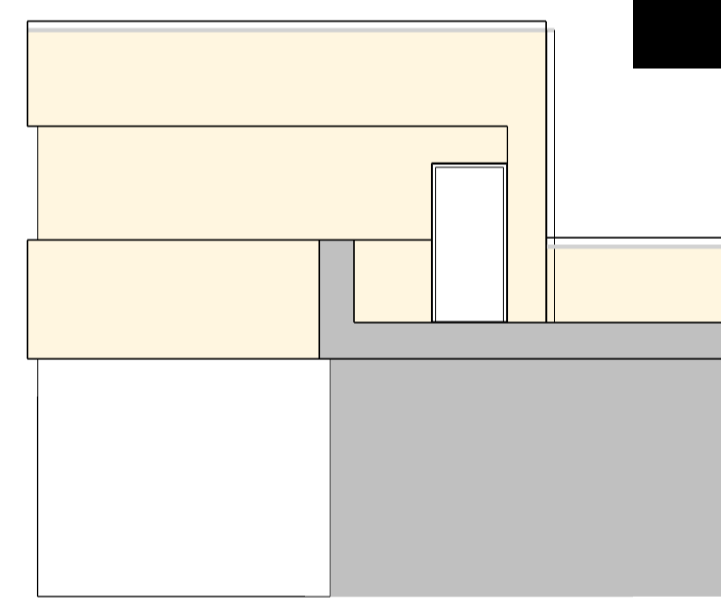
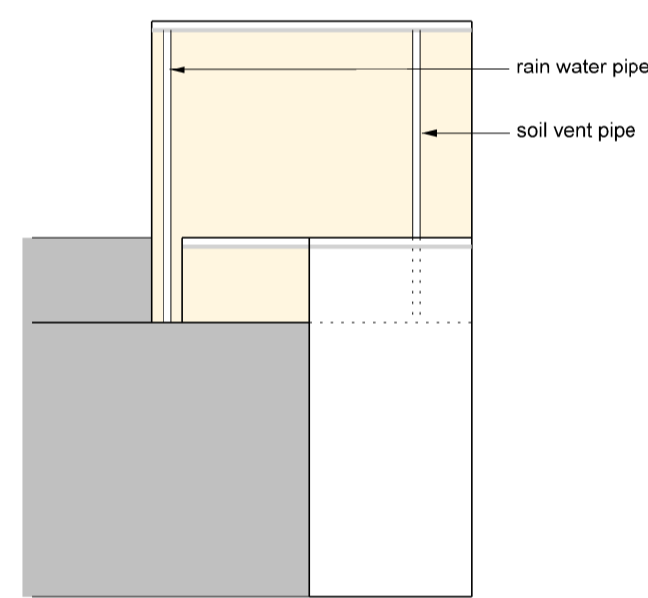
Materials Key

1. Aluminium curtain walling
2. Aluminium panel, bronzed finish to match existing
3. Concrete cladding panels
4. Aluminium framed windows
5. Triple glazing with integral shading mesh - type 1, light bronze
6. Triple glazing with integral shading mesh - type 2, dark bronze
7. Clear double glazing
8. Aluminium grille
9. Clear glass balustrade
10. Powder coated, galvanised steel handrail bronzed to match existing
11. Glass faced insulated opaque panel - type 2, dark bronze



1. Proposed Elevation 1

Key



2. Proposed Elevation 2

3. Proposed Elevation 3

4. Proposed Elevation 4

PL0	30/09/16	First issue, amended proposals for s73 application - Cantilever over service road reintroduced. - Spur SVI facing facade amended from sloped to stepped with operable windows & planted terraces. - Proposed escape staircase width increased by 400mm as required for fire escape. - Error correction to Elevations 2 and 3. Lift over run reduced to height of parapet as shown on Elevation 1 as approved scheme	SS
rev	date	description	by
		drawing amendments	

Shepherd Epstein Hunter
Architecture Planning Landscape

Phoenix Yard, 65 Kings Cross Road, London WC1X 9LW
tel: 020 7841 7500 fax: 020 7841 7575
email: architecture@seh.co.uk web: www.seh.co.uk

project
Thornhaugh Mews Project

client
University College London

drawing status	scale	size
Planning	1:100	A1
drawing	job no.	
Proposed Core Elevations	15166	
	drawing no.	rev.
	0145	PL0