

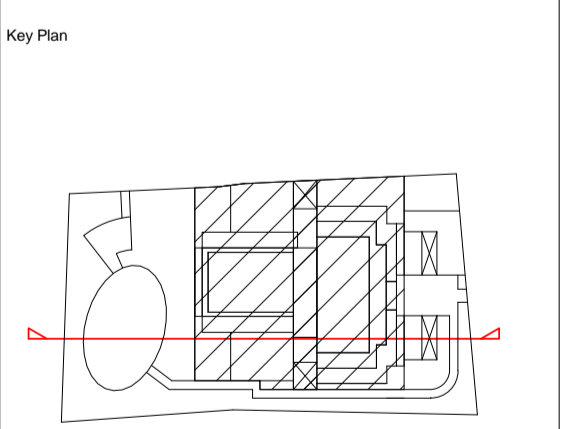
General notes:
 This drawing is copyright of KSR architects. This drawing must be read in conjunction with the Designer's Risk Assessment, specification and all other relevant documentation and drawings. KSR architects accept no liability for any expense, loss or damage of whatsoever nature and however arising from any variation made to this drawing or in the execution of the work to which it relates which has not been referred to them and their approval obtained.
 Do not scale from this drawing or the digital data, only figured dimensions are to be used. For Planning refer to linear scale.
 Check all dimensions on site prior to carrying out any works - advise of any discrepancy.
 Notes/Legends



Rev	Description	Date	Chkd
E	Tender 3	15 Aug 16	SAS
D	Tender 2	11 July 16	SAS
C	For Tender	05 June 16	SAS
B	Draft Tender	21 May 16	SAS
A	Internal Door Schedule	18 May 16	KF

© KSR architects
 Stamp

TENDER 3



KSRARCHITECTS
 KSR Architects LLP
 14 Grosvenor Street
 London W1G 0ND
 T +44 (0)20 7692 5000
 www.ksararchitects.com

Project:
29 NEW END

Title:
Section D

Date: 03/14/16	Drawn By: JR	Checked: SAS
Scale: 1:50 @ A1	Status Information	
Project Ref: 15031	Drawing No: 15031-2-114	Revision: E

1 Section D
 1:50