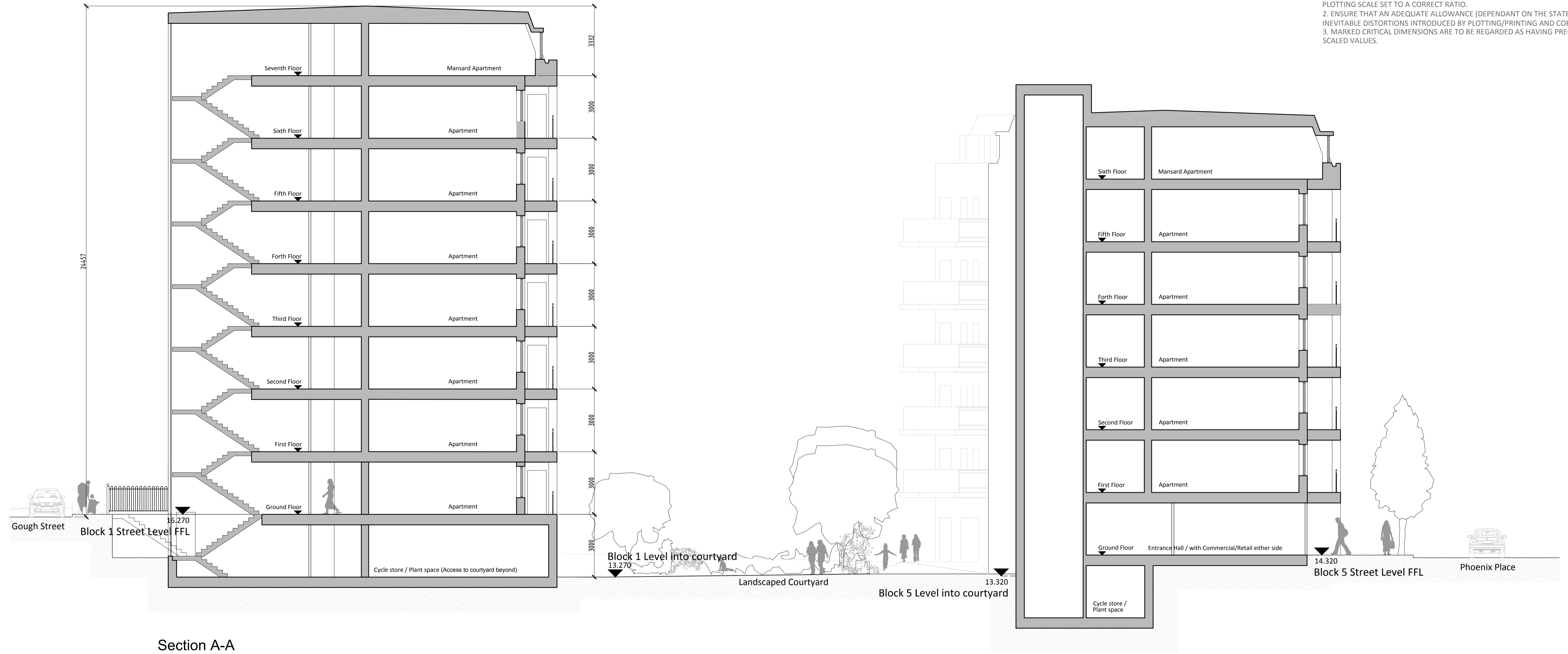


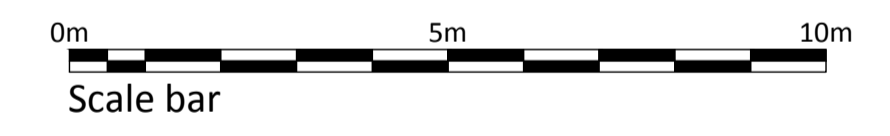
NOTE:
 THIS DRAWING HAS BEEN PRODUCED BY ELECTRONIC MEANS. SHOULD THE SCALE MEASUREMENTS BE TAKEN BY MEANS OTHER THAN ELECTRONIC (e.g. FROM A PRINTED COPY), THE FOLLOWING MUST BE TAKEN INTO CONSIDERATION BEFORE SCALING IS UNDERTAKEN:
 1. ENSURE THAT THE COPY HAS BEEN PRINTED/PLOTTED ON THE STATED SHEET SIZE WITH THE PLOTTING SCALE SET TO A CORRECT RATIO.
 2. ENSURE THAT AN ADEQUATE ALLOWANCE (DEPENDANT ON THE STATED SCALE) IS MADE FOR THE INEVITABLE DISTORTIONS INTRODUCED BY PLOTTING/PRINTING AND COPYING PROCESSES.
 3. MARKED CRITICAL DIMENSIONS ARE TO BE REGARDED AS HAVING PRECEDENCE OVER THE SCALED VALUES.



Section A-A



Key Plan
 Scale 1:500



B	Access from Block 1 to courtyard revised.	21-06-16	BPH	CMR
A	Drawing status updated	29-04-16	HJL	CMR
REV	DESCRIPTION	DATE	INIT	(CHKD)

Client
 Create Streets Ltd.
 Project
 Mount Pleasant Circus
 Title
 Section A-A

Scale 1:100@A1 Date 10.03.16
 Drawn By BPH Checked By CMR
 Project No: K150248 Drawing No: A SK111 Revision B

St Johns House 1A Knoll Rise Orpington Kent BR6 0JX
 01689 888222 orpington@calfordseaden.co.uk
 calfordseaden LLP is a Limited Liability Partnership Registered in England & Wales number OC315838
 ORPINGTON | LONDON | BIRMINGHAM | SOUTHEND-ON-SEA | WINCHESTER

calfordseaden

calfordseaden.co.uk

NEIGHBOURHOOD PLANNING