



Section 73

Minor Material Amendment Application 2016/4389/P (in relation to Application 2015/3131/P & 2016/2416/P)



COMPARISON DOCUMENT

Revision: P2
11th October 2016

Contents

Objectives	Pg.03
Ground Floor Plan - Consented.....	Pg.06
Ground Floor Plan - Proposed.....	Pg.07
Roof Plan - Consented.....	Pg.14
Roof Plan - Proposed.....	Pg.15
Section A-A - Consented.....	Pg.16
Section A-A - Proposed.....	Pg.17
Front and Rear Elevations - Consented.....	Pg.18
Front and Rear Elevations - Proposed.....	Pg.19

Appendices (As Separate Drawings)

- NMA(10)100_P4 Ground Floor Plan
- NMA(10)104_P5 Roof Plan
- NMA(10)200_P4 Section A-A
- NMA(10)300_P3 Proposed Elevations



Objectives

The purpose of this document is to highlight the proposed minor-material amendments to the Planning Application No. 2015/3131/P.

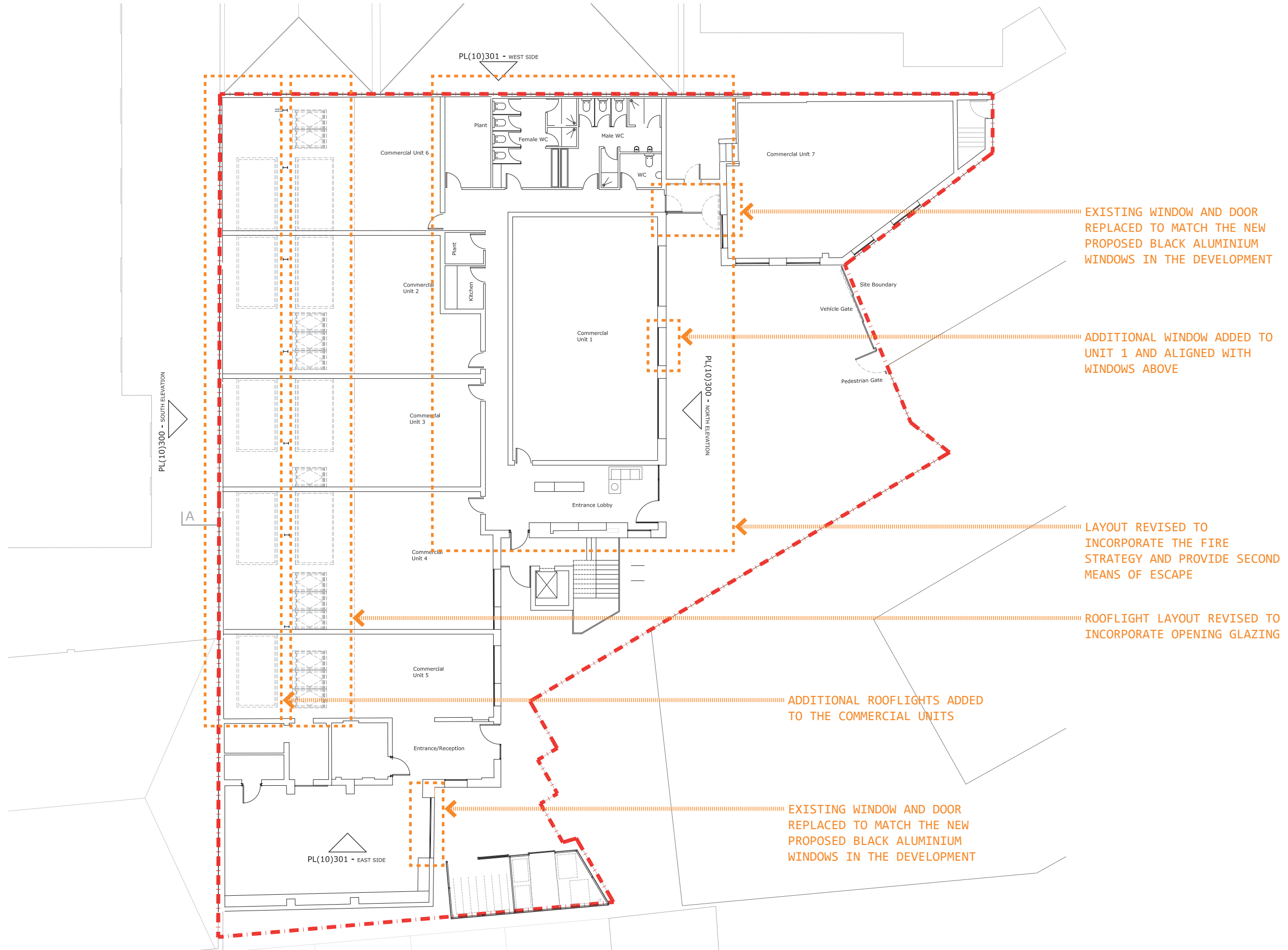
The proposed amendments are as following:

- The ground floor layout has been revised to provide a second means of escape from the commercial units in order to provide fire safety and provide additional welfare facilities.
- A new window has been provided to Commercial Unit 1 in order to provide as much light as possible.
- We have replaced the entrance door to Commercial Unit 7 to match the new proposed windows everywhere else in the building.
- The rooflights have been revised to the commercial units to provide openable glazing.
- Additional rooflights have been added to commercial units to increase the natural light to the commercial units.

Ground Floor Plan - Consented



Ground Floor Plan - Proposed





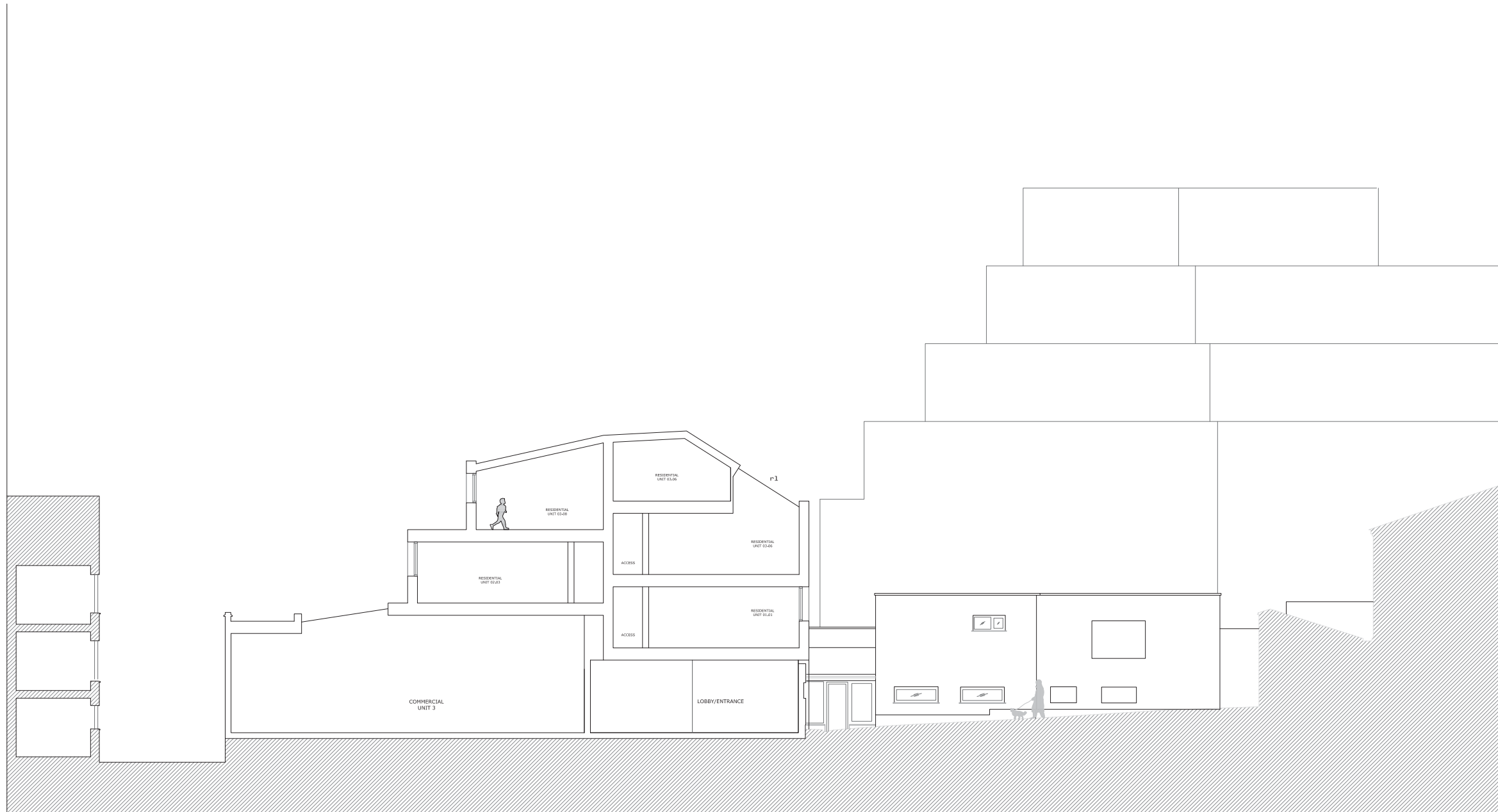
Roof Plan - Proposed



ADDITIONAL ROOFLIGHTS ADDED TO THE COMMERCIAL UNITS

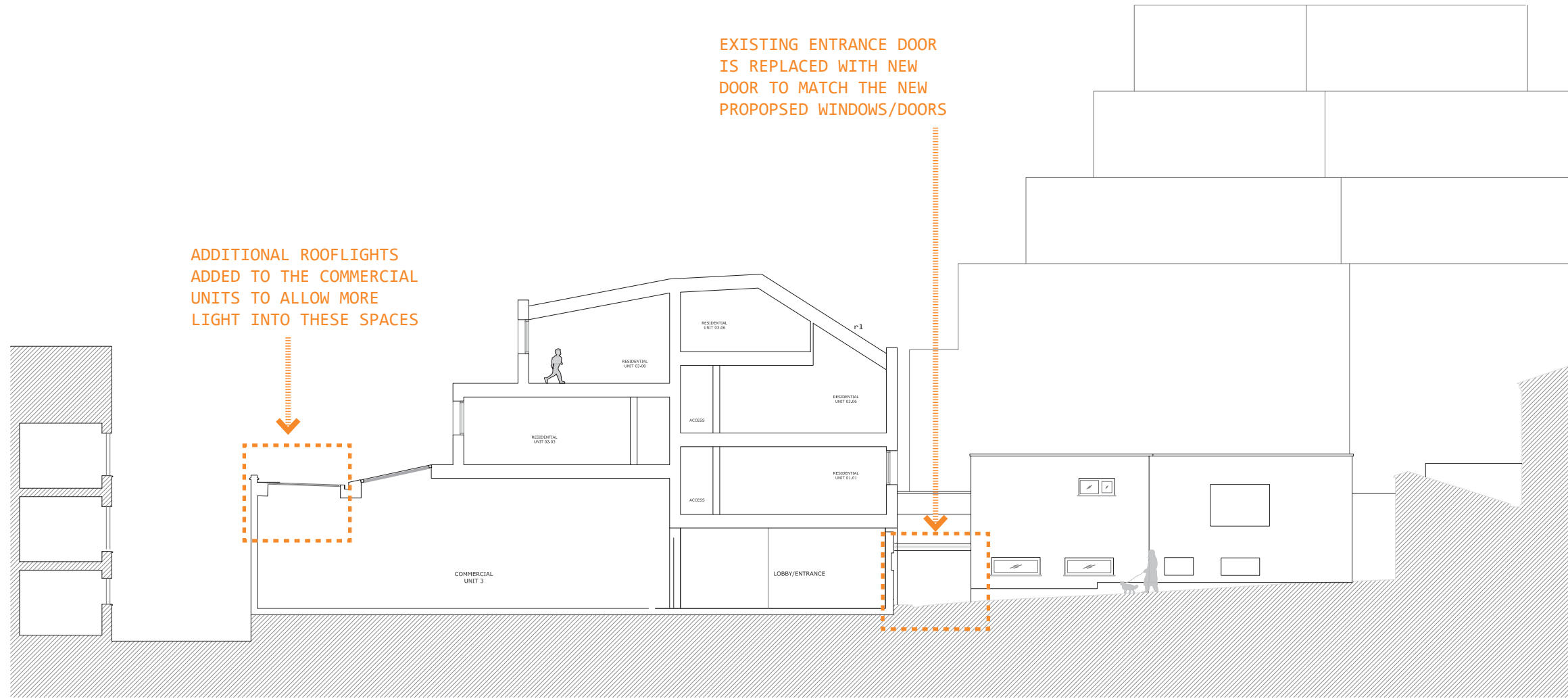
ROOFLIGHT LAYOUT REVISED TO INCORPORATE OPENING GLAZING

Section A-A - Consented



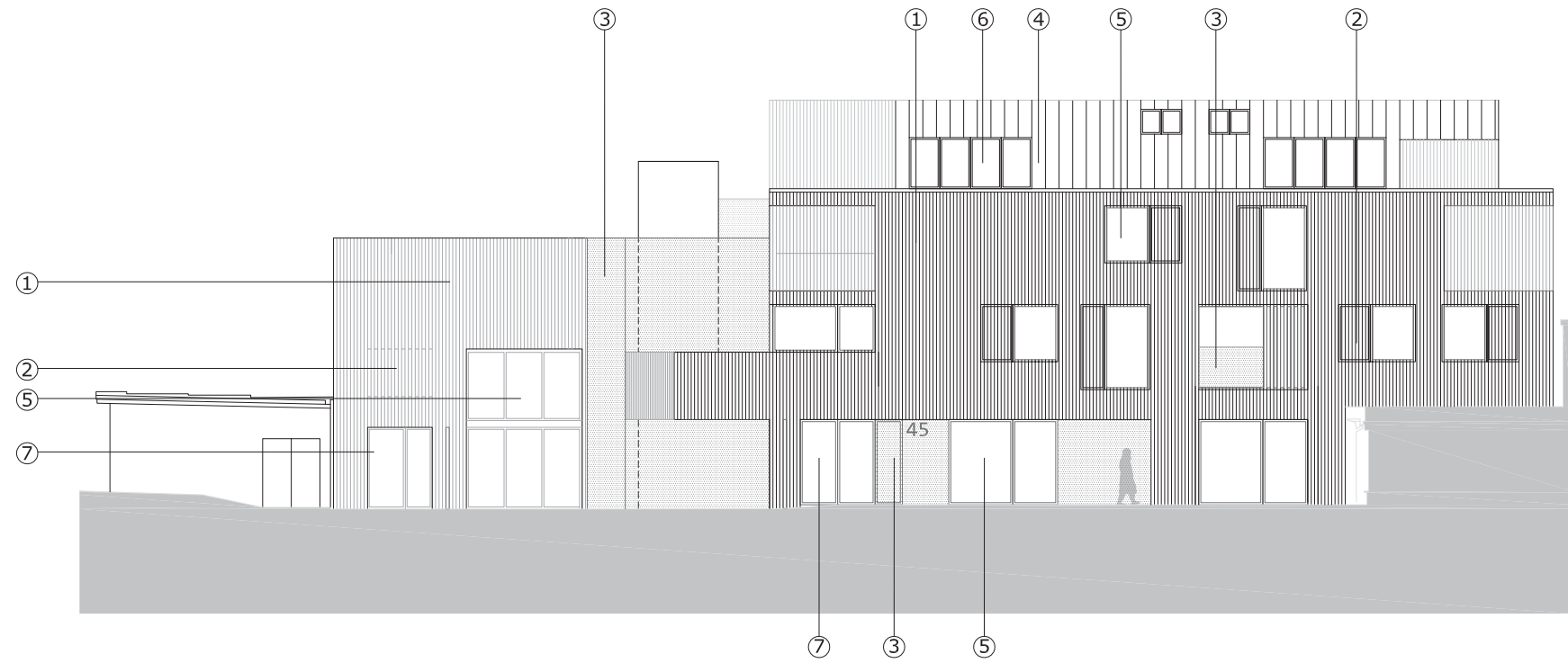
Proposed Section A-A

Section A-A - Proposed

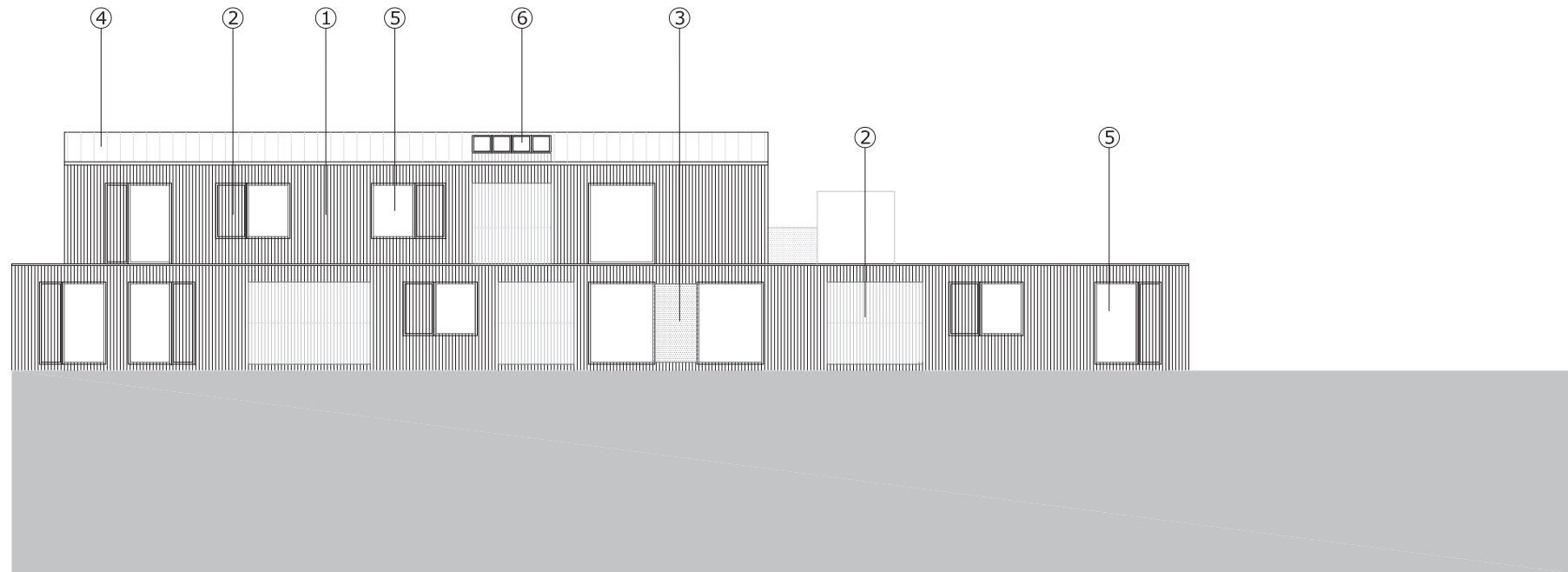


Proposed Section A-A

Front and Rear Elevations - Consented

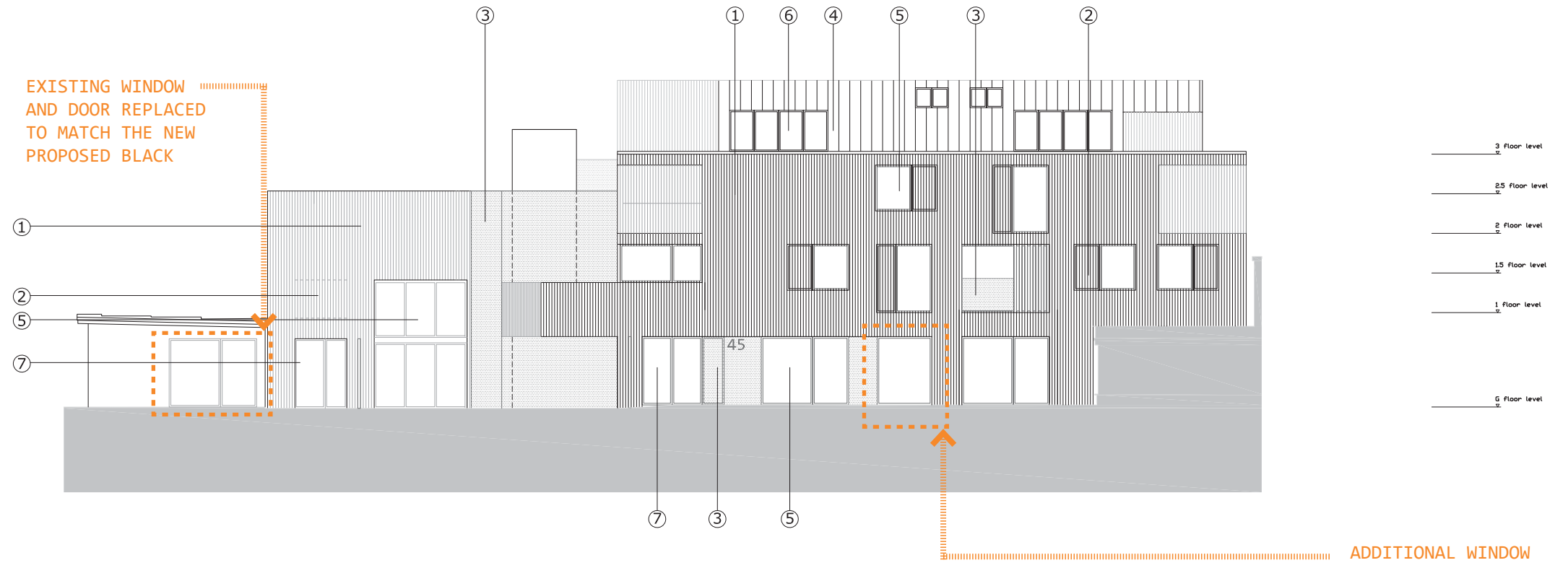


Proposed Front Elevation

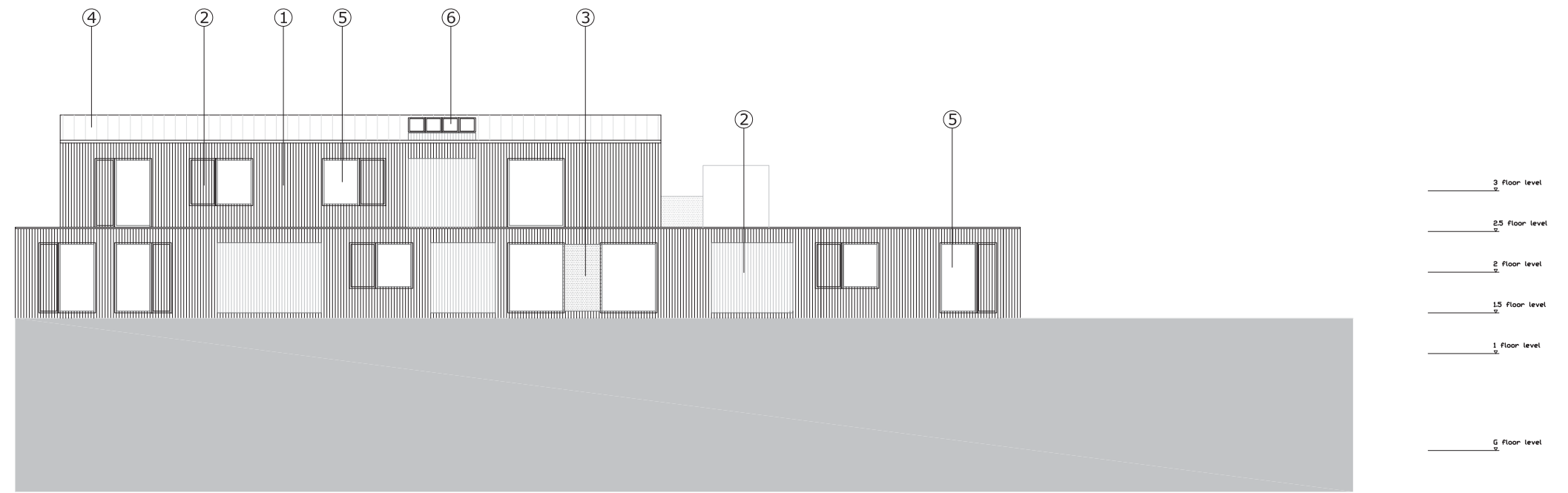


Proposed Rear Elevation

Front and Rear Elevations - Proposed



Proposed Front Elevation



Proposed Rear Elevation

