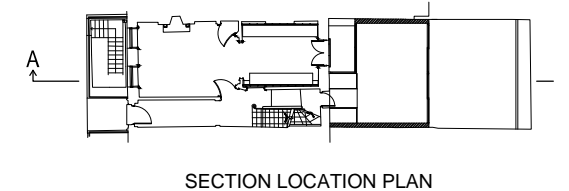
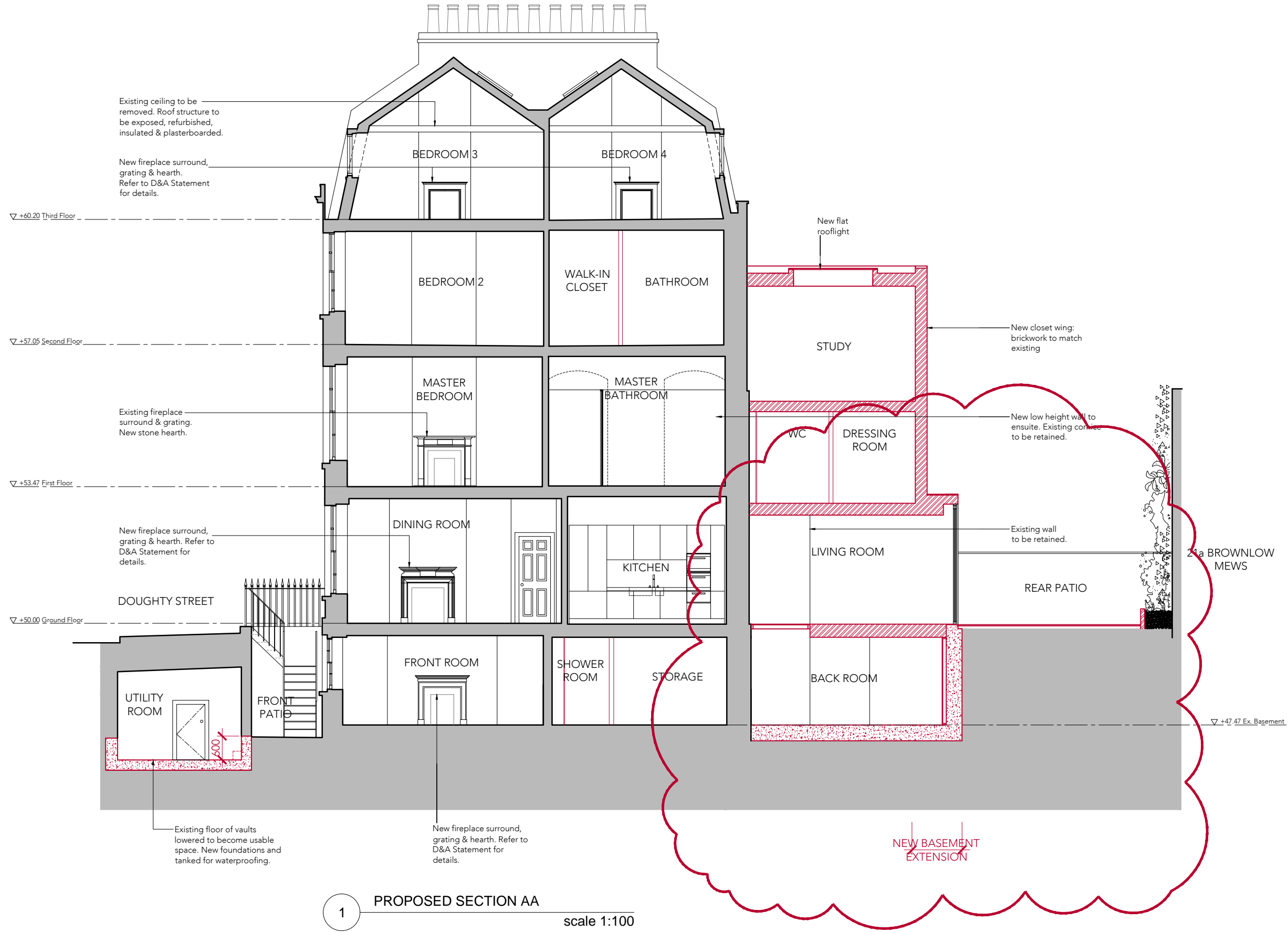


NOTE  
 DO NOT SCALE FROM THIS DRAWING, EXCEPT FOR TOWN PLANNING PURPOSES.  
 THIS DRAWING IS THE PROPERTY OF TG STUDIO AND COPYRIGHT IS RESERVED BY THEM.  
 THIS DRAWING IS ISSUED ON CONDITION THAT IT IS NOT REPRODUCED, USED OR DISCLOSED BY  
 OR TO ANY UNAUTHORIZED PERSON WITHOUT THE PRIOR CONSENT OF TG STUDIO.  
 THE AREAS ON THIS DRAWING HAVE BEEN CALCULATED FROM A CAD DRAWING AND HAVE NO  
 TOLERANCES ADDED OR SUBTRACTED.

REVISIONS	DATE
- PRE-PLANNING	18.09.2015
A PLANNING SUBMISSION	19.02.2016
B BASEMENT REVISED	23.09.2016



**TG**  
**STUDIO**  
 Architecture & Interior Design

10 RATHBONE PLACE, LONDON W1T 1HP T 020 7636 3838 F 020 7636 5659 WWW.TG-STUDIO.CO.UK

PROJECT 47 DOUGHTY STREET, LONDON WC1N 2LW

DRAWING PROPOSED SECTION AA

DATE 23.09.2016 DRAWN BY EG CHECKED BY TG

STATUS PLANNING SCALE @ A3 1:100

JOB NO. 163 DWG. NO. A-350 REV B

1 PROPOSED SECTION AA scale 1:100

