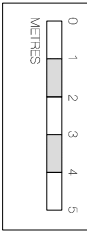
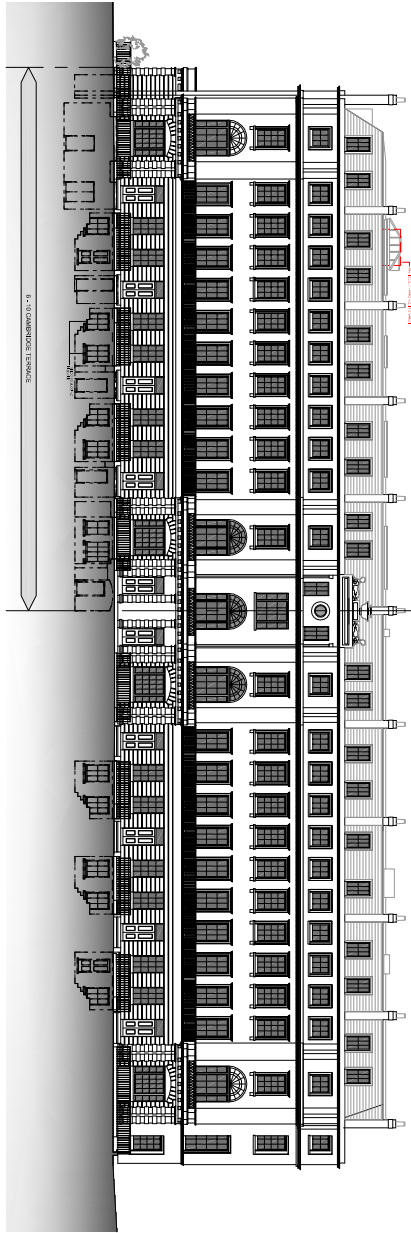
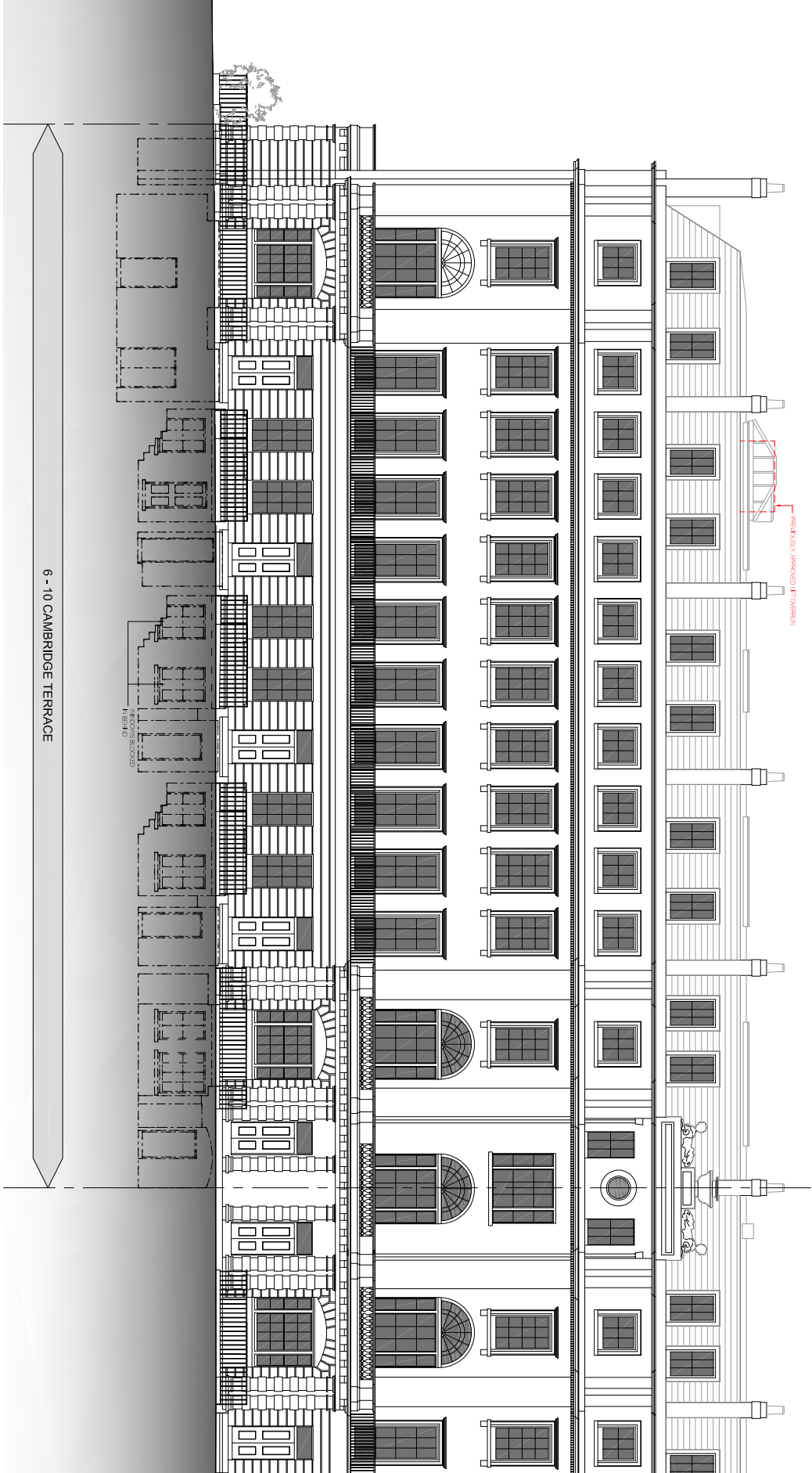


NOTES:

1. In accordance with our submissions to the Planning and Building Acts 1991, it should be noted that the information provided is for your information only and is not intended to constitute part of any other submission or information of any kind whatsoever.
2. CPC London offers Agents, Architects, Surveyors, Chartered Surveyors, Quantity Surveyors, Planning Consultants and other professionals the opportunity to work with us on a number of projects on a non-exclusive basis.
3. Information is given on behalf of our organisation only. Any information given on behalf of any other organisation or individual is not intended to be a recommendation or endorsement by CPC London and should not be relied upon without the consent of the relevant party.
4. Any information given on behalf of our organisation is not intended to be a recommendation or endorsement by CPC London and should not be relied upon without the consent of the relevant party.
5. Any information given on behalf of our organisation is not intended to be a recommendation or endorsement by CPC London and should not be relied upon without the consent of the relevant party.
6. Any information given on behalf of our organisation is not intended to be a recommendation or endorsement by CPC London and should not be relied upon without the consent of the relevant party.
7. Any information given on behalf of our organisation is not intended to be a recommendation or endorsement by CPC London and should not be relied upon without the consent of the relevant party.
8. Any information given on behalf of our organisation is not intended to be a recommendation or endorsement by CPC London and should not be relied upon without the consent of the relevant party.



NO.	DATE	DESCRIPTION

Project: Quid
 Location: 6-10 Cambridge Terrace and 1-2 Chester Gate, Regent's Park, London NW1

PROPOSED ELEVATION
 CAMBRIDGE TERRACE
 FRONTAGE

DATE: JUNE '16
 SCALE: 1:200 @ A3
 DRAWING: 639-4.001
 SHEET NO: 1 OF 1