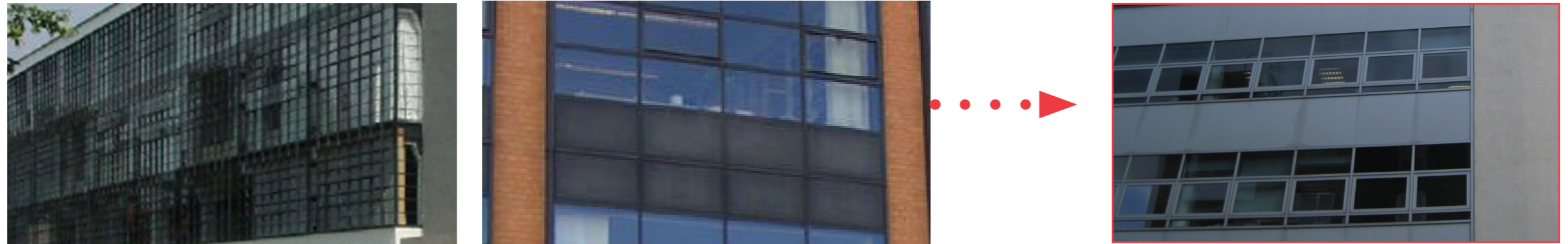


3. The Existing Building

3.4 Historic analysis - Key Traits

Curtain Walling



Windows



Entrance



Plinth

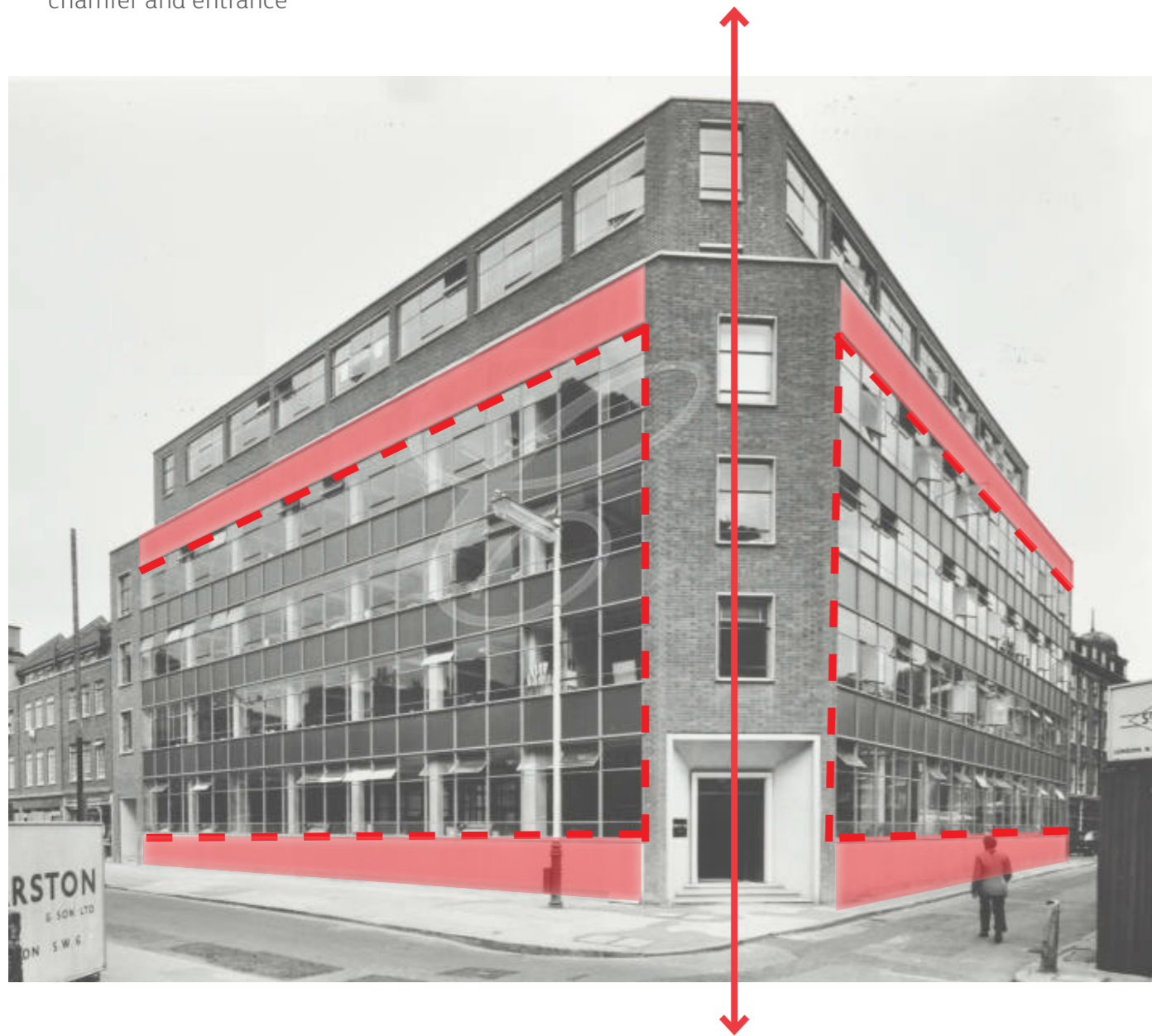


3. The Existing Building

3.5 Front Facade- analysis

Original Entrance

- Corner building with a corner entrance
- Entrance exaggerated/highlighted with sloping jams
- Corner entrance aligns with fenestration above
- Rendered plinth on the flanking wings emphasises the chamfer and entrance



Present Entrance

- Entrance shifted onto Sandland Street - confusing as the buildings name is 20 Red Lion Street
- Bias towards Sandland Street is further exaggerated by the addition of an applied stone finish and new curved windows on the Sandland Street elevation
- Plinth is lost as the whole facade is rendered.



3. The Existing Building

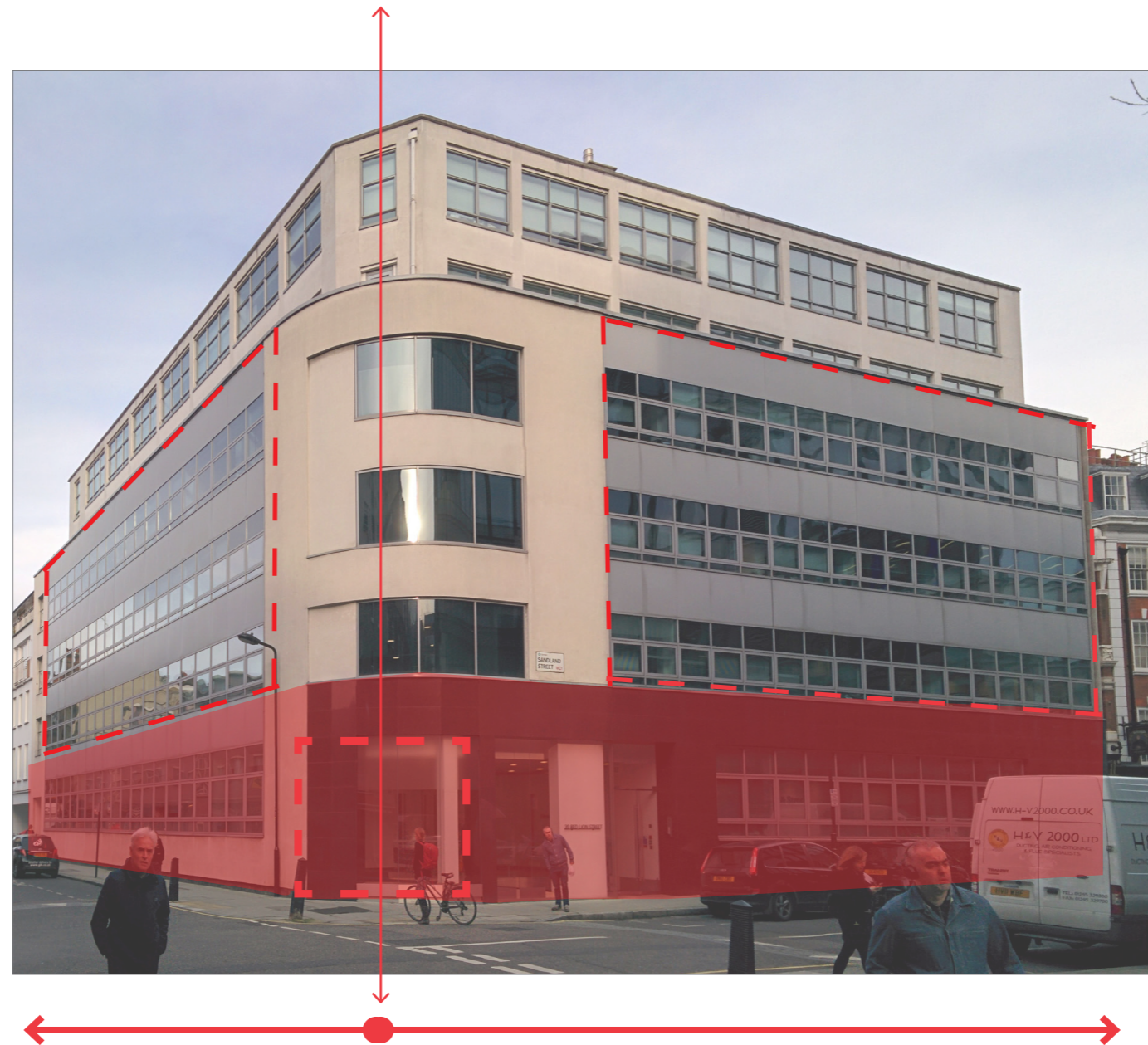
3.5 Front Facade- Proposed diagram

Windows

Curtain Walling

Plinth

Entrance



3. The Existing Building

3.6 Rear courtyard - analysis

Car Parking

- Unused parking spaces
- No access from reception to car park - access only from external stair to basement.
- Both wings of the office floors have continuous single glazed windows onto the car park

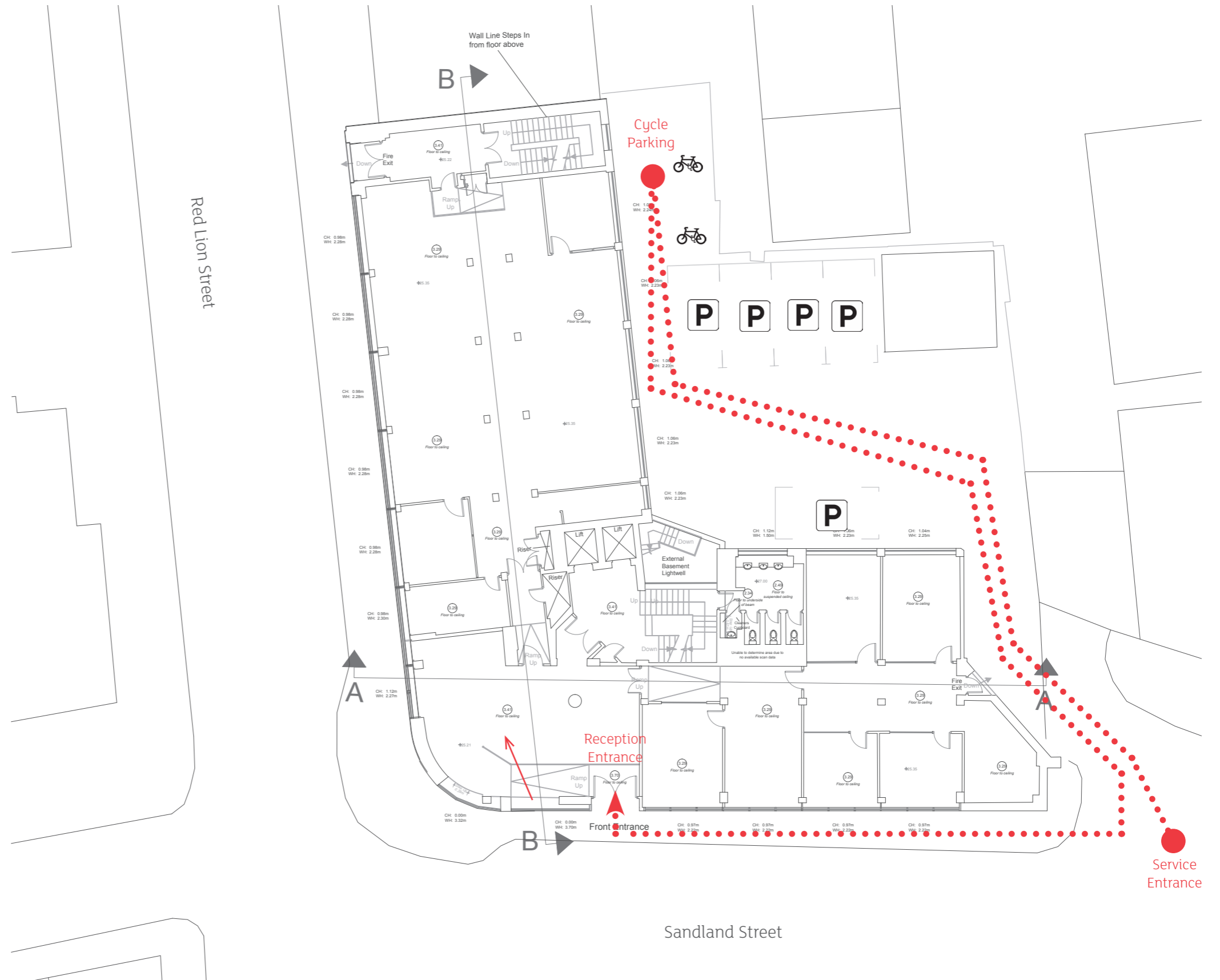
Cycle Facilities

- 16 Cycle parking spaces located in the rear car park
- No route direct route from cycle parking to reception



1. Existing cycle shelter

2. View of carpark and cycle park from staircore



3. The Existing Building

3.7 Rear facade- analysis

- Rear facade has very different fenestration and material palette compared to front facade
- Existing windows and bricks are original to the 1950s building - in the spirit of Bauhaus and Deutscher Werkbund



Calcium silicate bricks



Punched crittall windows



1. Rear facade brickwork

2. Rear facade windows

3. Rear facade from Three Cups Yard