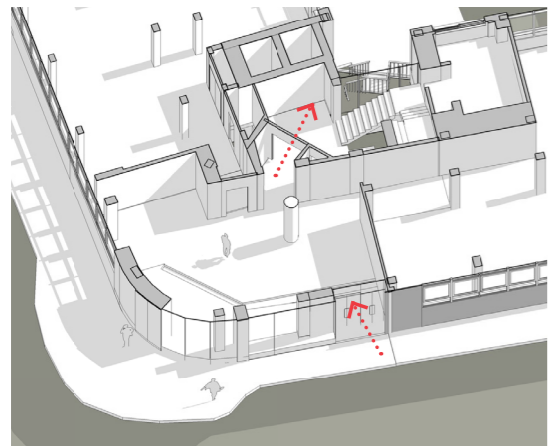
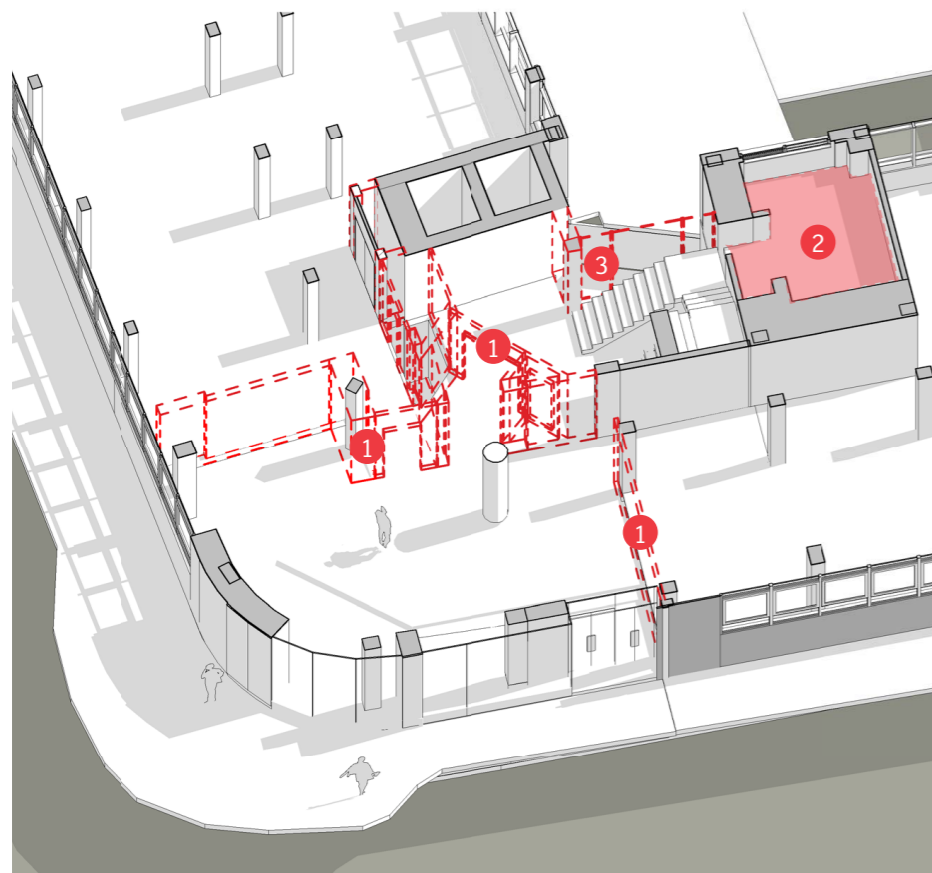


## 6. The Design Proposal

### 6.2 Key Moves - Ground Floor



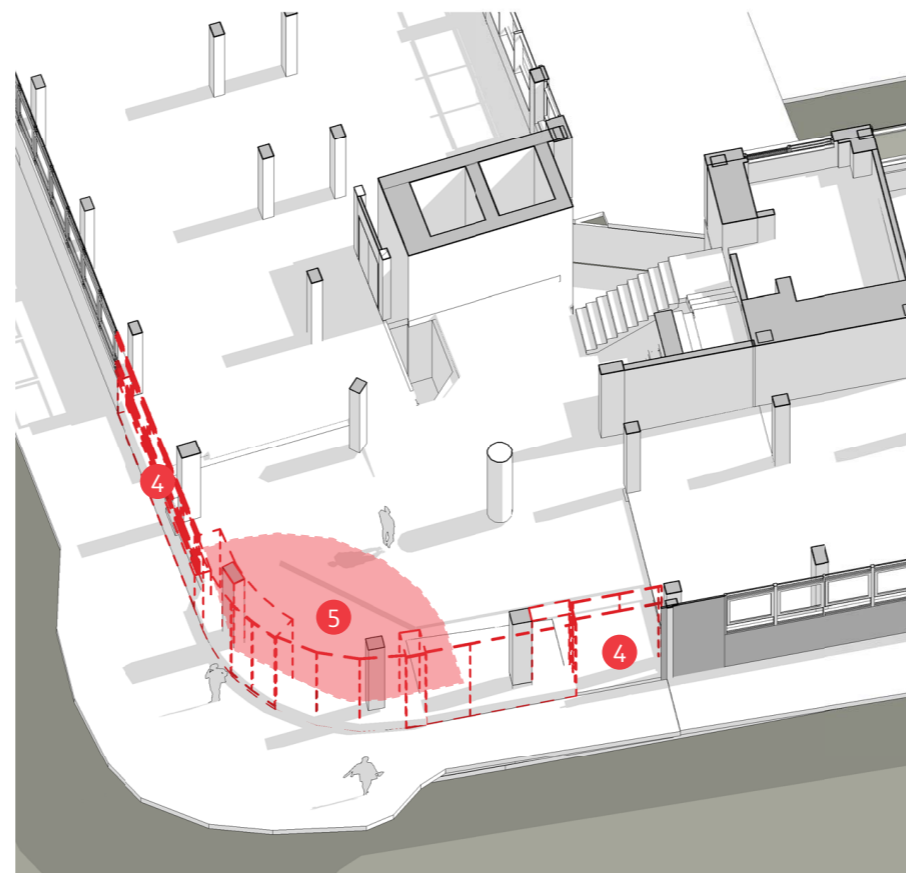
Existing



Move 1  
Remove partitions between reception, office floor and core

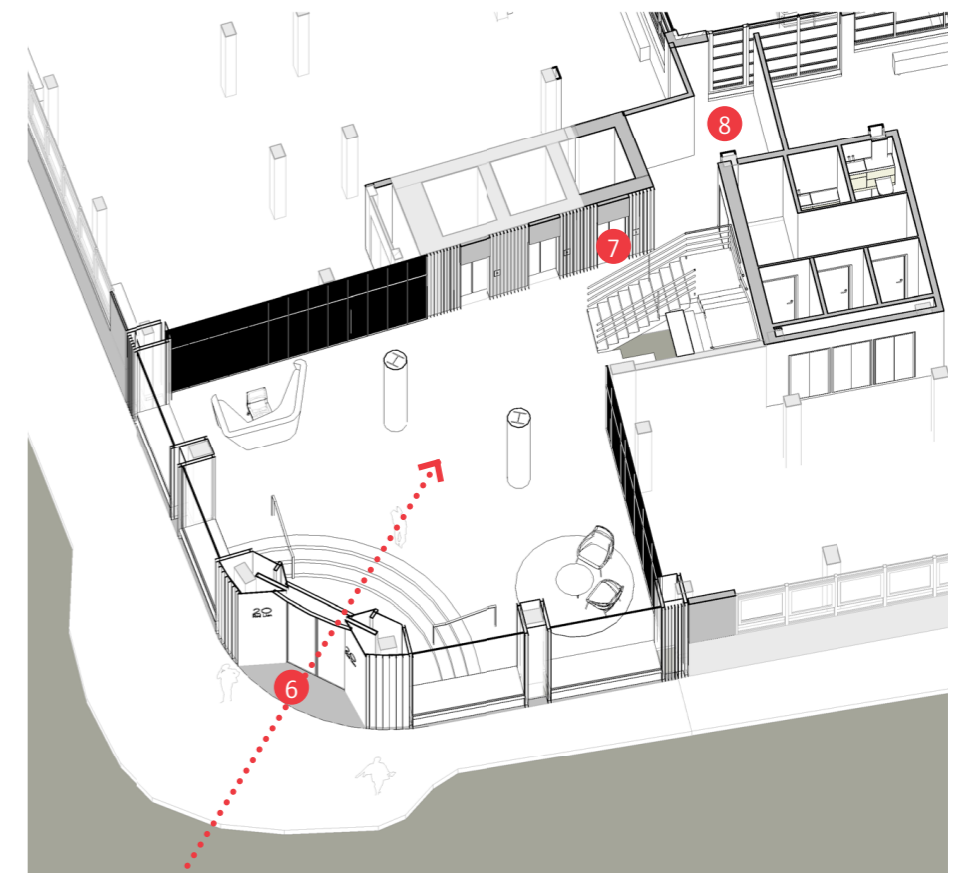
Move 2  
Remove slab in WC at half landing level - move to floor level

Move 3  
Remove exterior wall and column behind staircore



Move 4  
Remove curtain walling, including entrance doors

Move 5  
Remove slab to allow for new platform lift and steps



Move 6  
Create new corner entrance

Move 7  
Add new lift

Move 8  
Create new route to courtyard

## 6. The Design Proposal

### 6.2 Key Moves - Ground Floor

#### The Reception - Exterior

**A** New trim to Red Lion & Sandland St. facades

**B** New glazing

**C** Black fins with white backing

**D** New stone to match existing on Sandland St.

**E** Existing windows

**F** Future signage

**G** Future intercom

**H** Black metal panel

**I** White metal reveals

**J** Glazed door

**K** Existing stone



## 6. The Design Proposal

### 6.2 Key Moves - Ground Floor

#### The Reception - Exterior, Red Lion Street

**A** New trim to Red Lion & Sandland St. facades

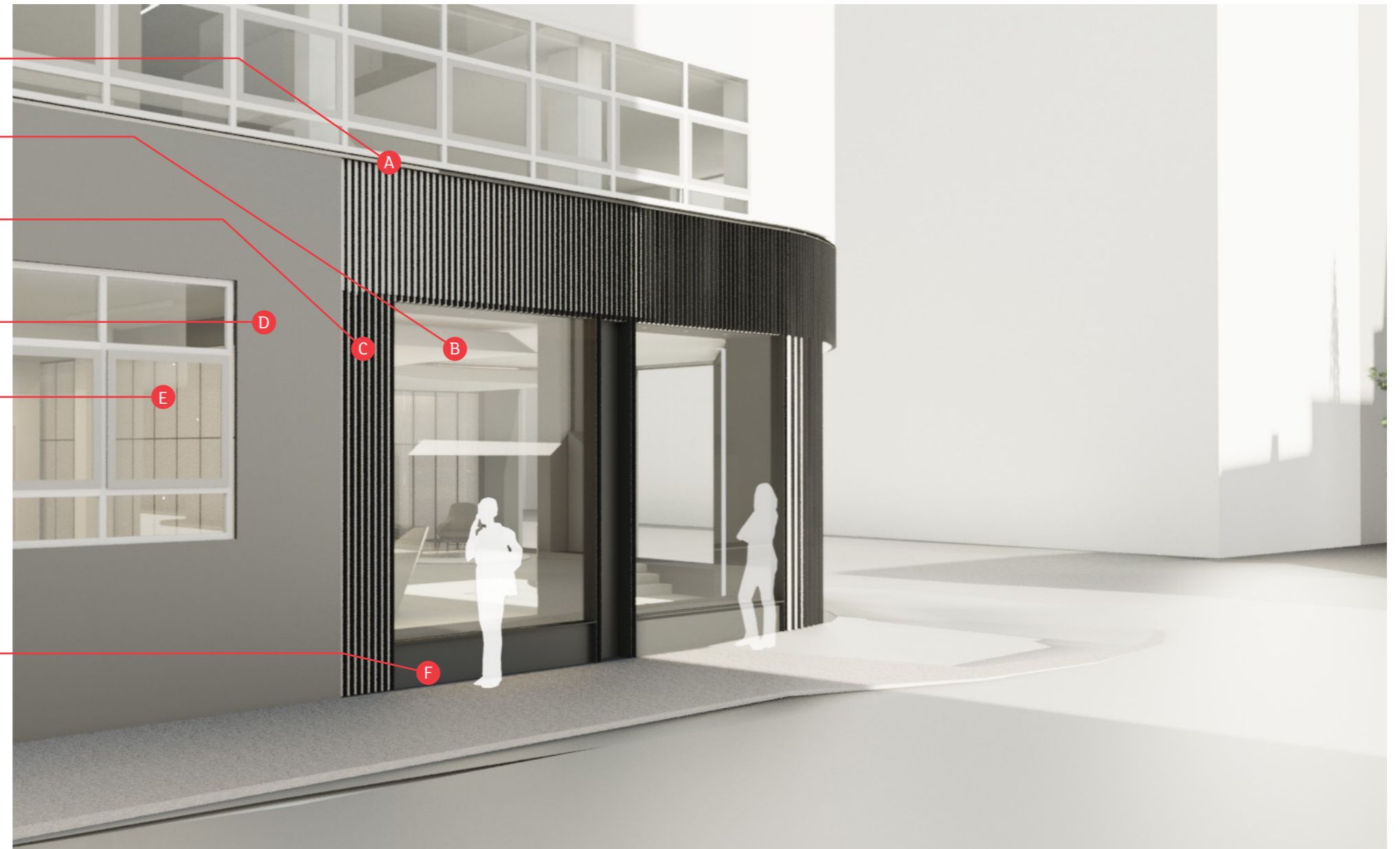
**B** New glazing

**C** Black fins with white backing

**D** New stone to match existing on Sandland St.

**E** Existing windows

**F** Black metal panel



## 6. The Design Proposal

### 6.2 Key Moves - Ground Floor

#### The Reception - Exterior, Sandland Street

**A** New trim to Red Lion & Sandland St. facades

**B** New glazing

**C** Black fins with white backing

**D** New stone to match existing on Sandland St.

**E** Existing windows

**F** Future signage

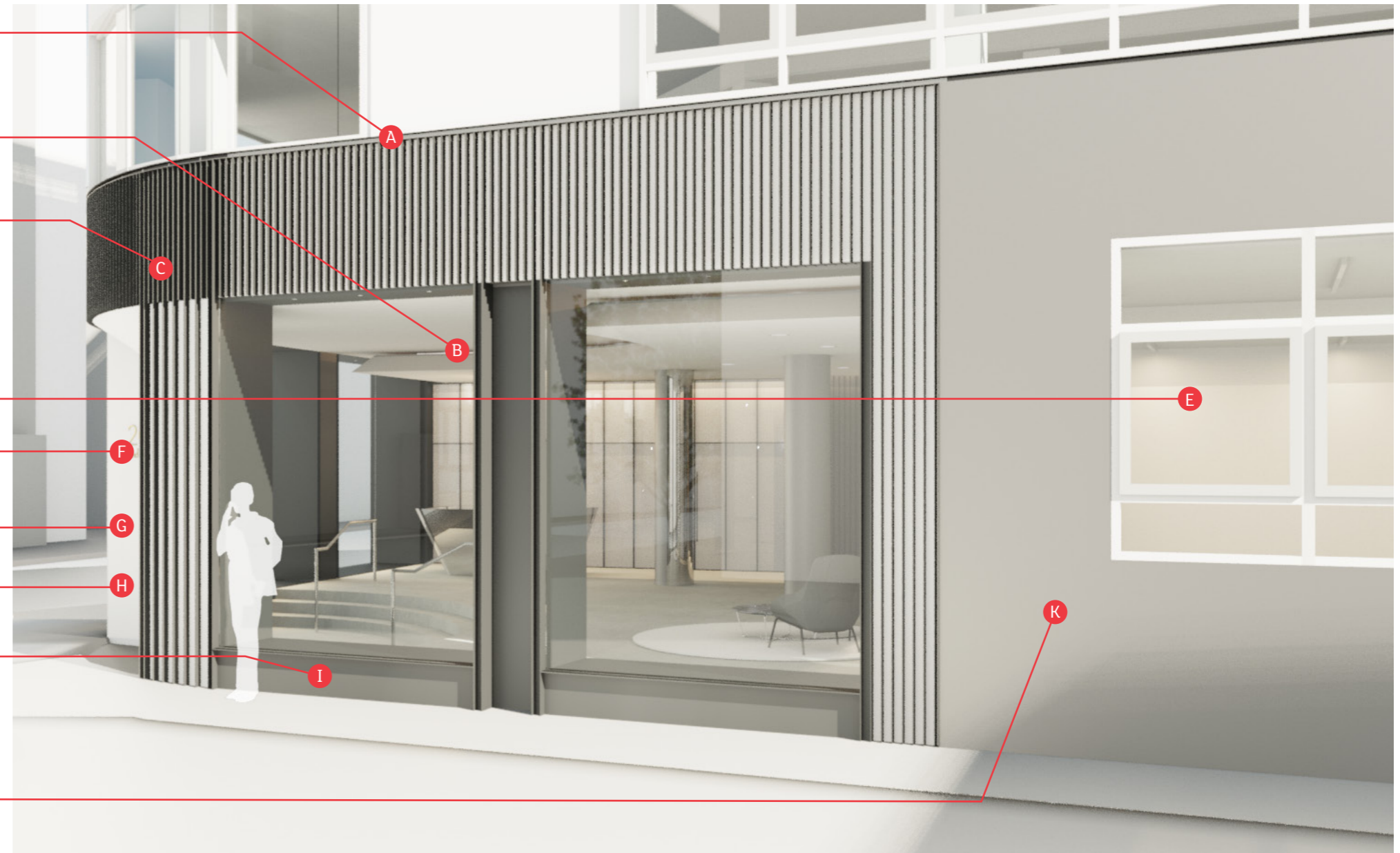
**G** Future intercom

**H** White metal reveals

**I** Black metal panel

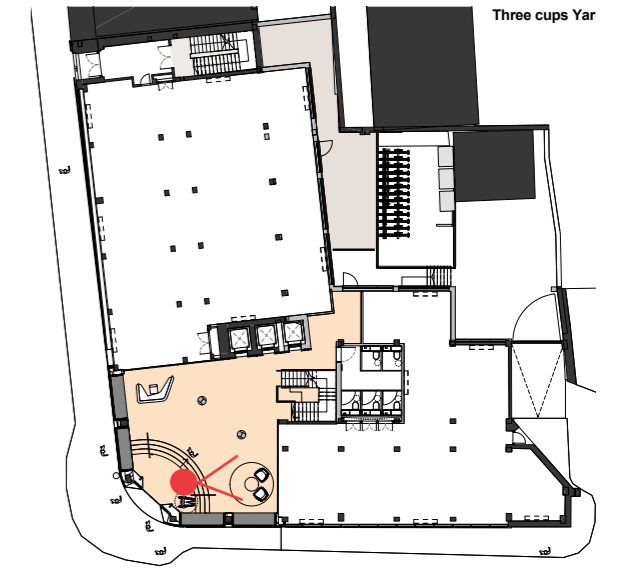
**J** Glazed door

**K** Existing stone



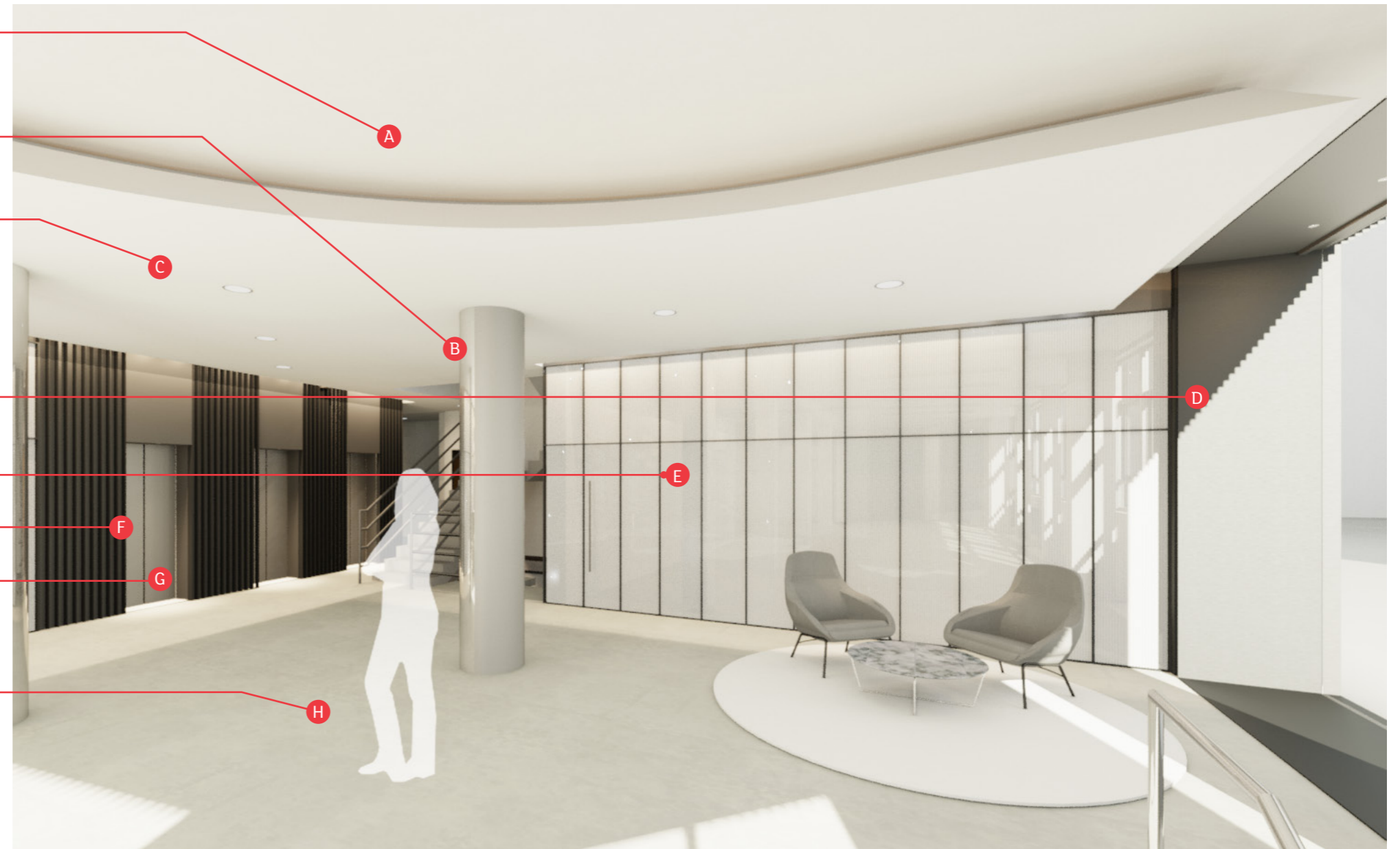
## 6. The Design Proposal

### 6.2 Key Moves - Ground Floor



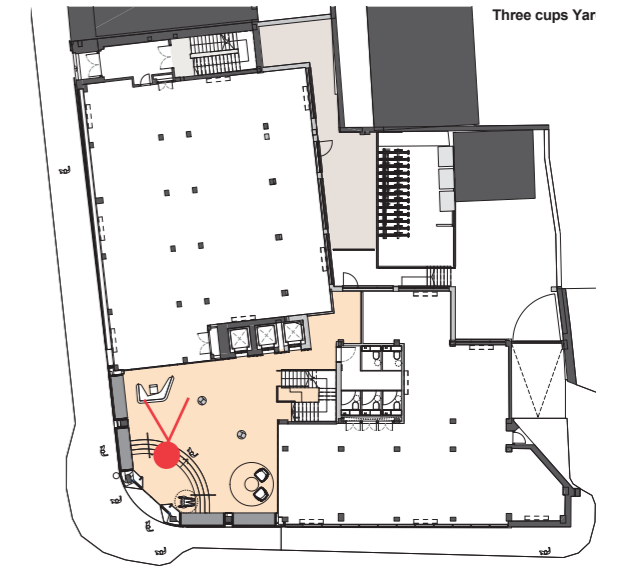
#### The Reception - Interior

- A** New plasterboard soffit
- B** Polished stainless column casing
- C** New lighting
- D** New metal panelling to window reveals
- E** Crittall type glazed partition
- F** Feature wall panelling
- G** New lift doors & reveals
- H** New floor finish



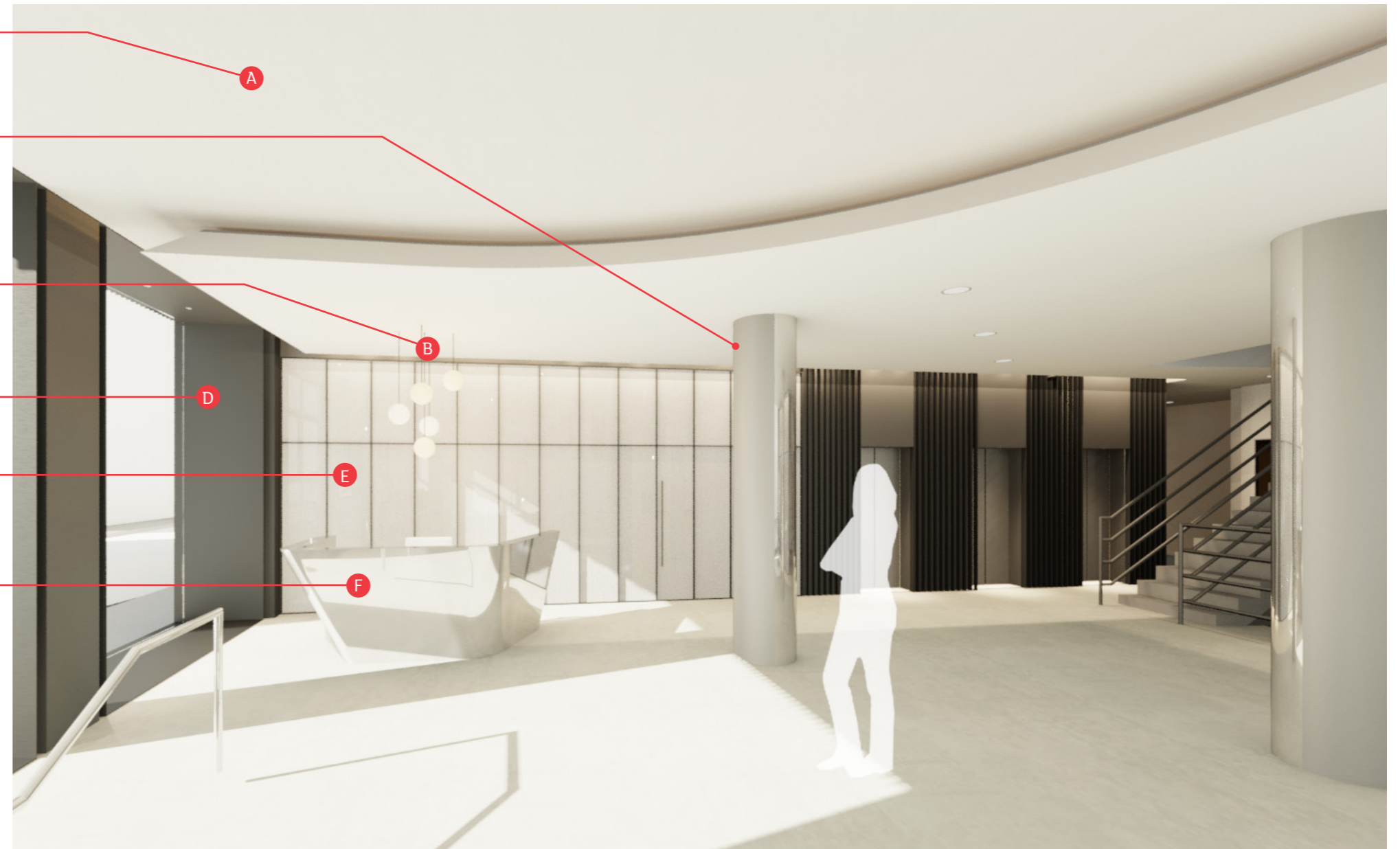
## 6. The Design Proposal

### 6.2 Key Moves - Ground Floor



#### The Reception - Interior

- A** New plasterboard soffit
- B** Polished stainless column casing
- C** New lighting
- D** New metal panelling to window reveals
- E** Crittall type glazed partition
- F** New reception desk



## 6. The Design Proposal

### 6.2 Key Moves - Ground Floor

View of new corner entrance



Historical



Existing



Proposed

