

The contractor must verify all dimensions on site before any works are undertaken, discrepancies are to be reported to the project architect/designer for clarification.

All works will be carried out in accordance with the SUPERDRUG NFOS document & are to comply with the tenants fit out guidelines following landlords approval.

MVAC, M&E layouts are indicative & must be verified with the relevant contractor before commencement of work.

All works to be carried out in accordance with the fire strategy and fire cert application schedule produced by the landlord team issued at tender.

The existing/proposed sprinkler system is to be assessed by contractor to ensure the system is in compliance with building regs part B.

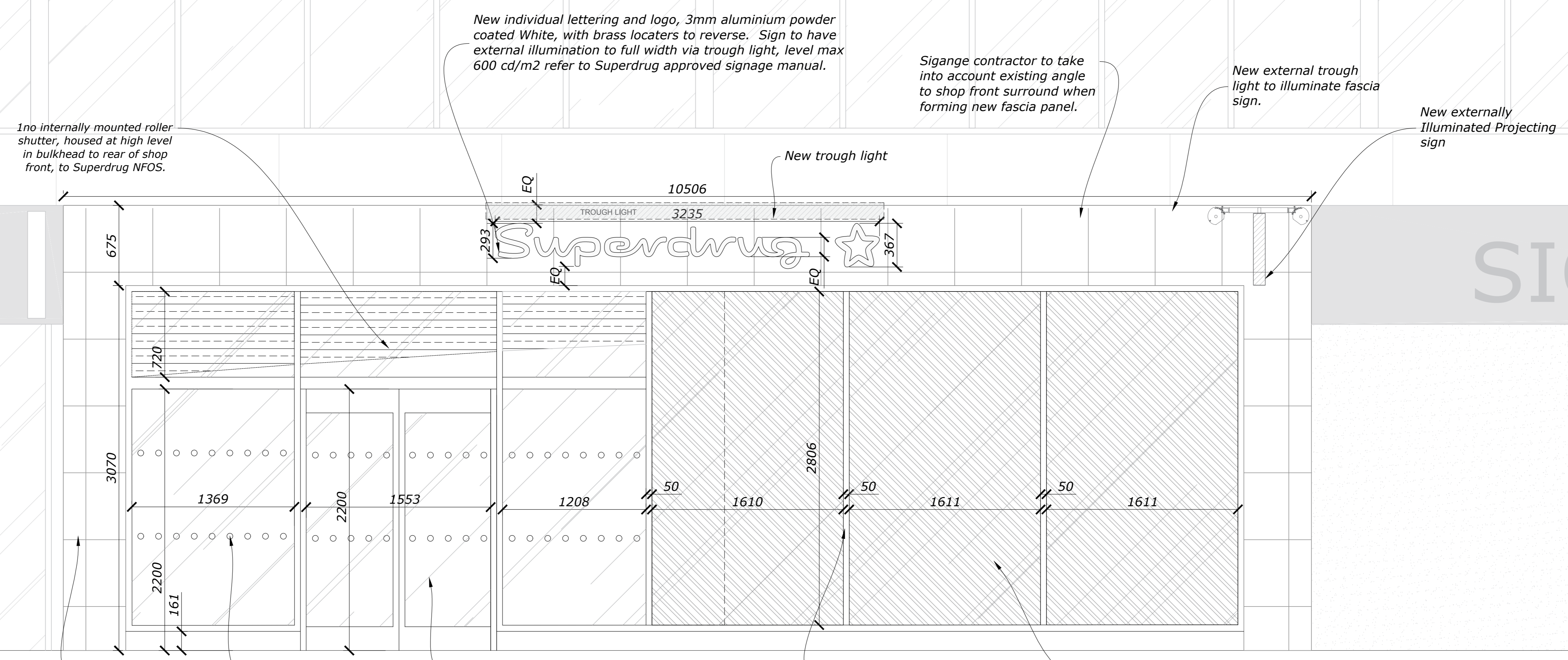
This drawing remains the property of ASKATON/SUPERDRUG & may not be reproduced in any way without prior consent.

**SCHEDULE OF RISKS**  
Standard risks and hazards normally associated with the types of work detailed on this drawing, include:

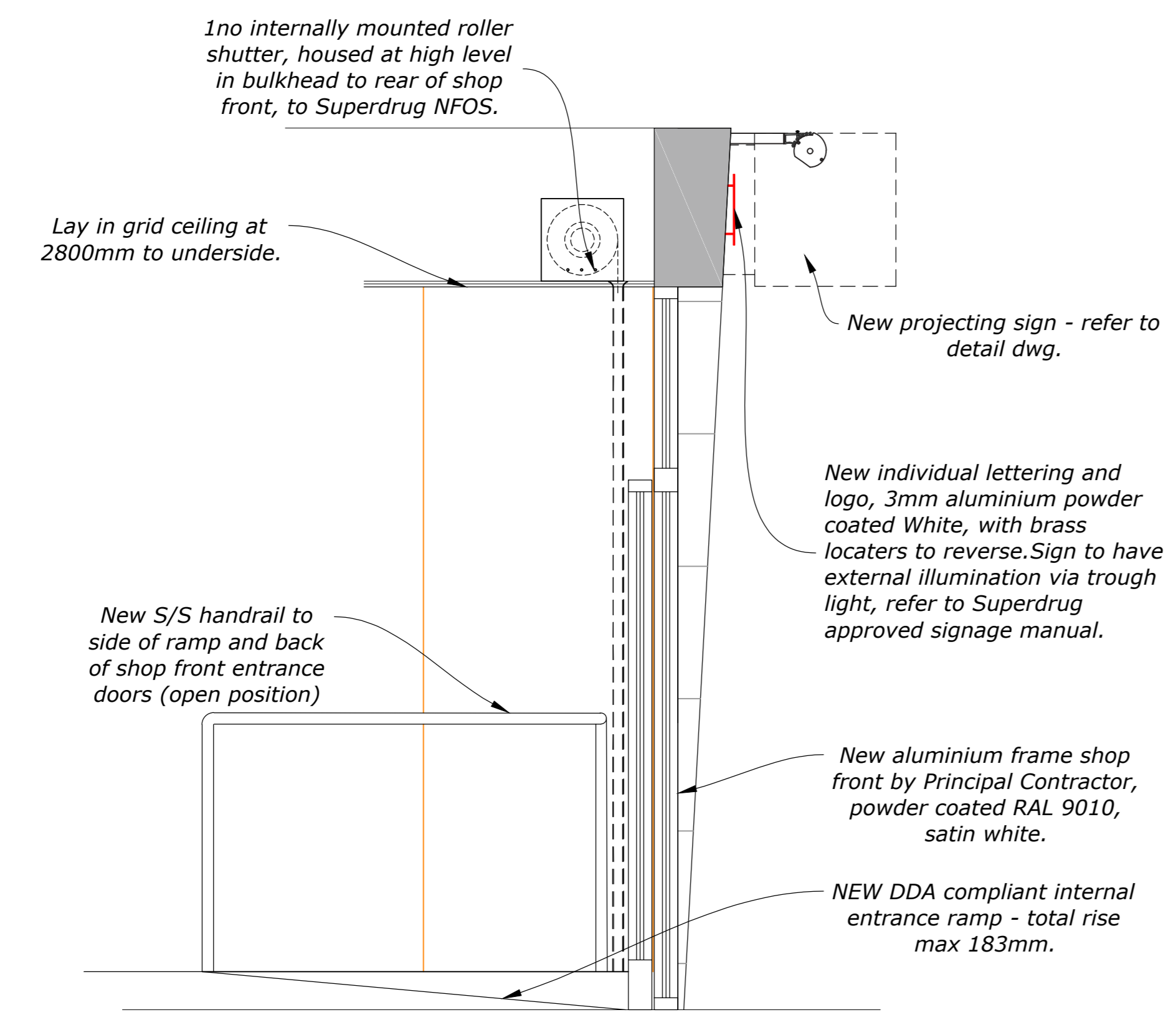
- Electrocution: M&E installation/alterations.
- Working at height: Falls from scaffolds, platforms & ladders. Falling materials.
- Noise: Use of power tools & demolition equipment.
- Dust: Use of power tools & demolition equipment.
- Suffocation: Fume inhalation from installation/alterations to incoming services, working with hazardous materials/solvents.
- Trip hazards: Loose cables & materials.
- Working in close proximity to the public.
- Risks associated with structural works will be assessed by a structural engineer.
- It is assumed that all works on this drawing will be carried out by a competent contractor working, where appropriate to an approved method statement.

SIGNAGE

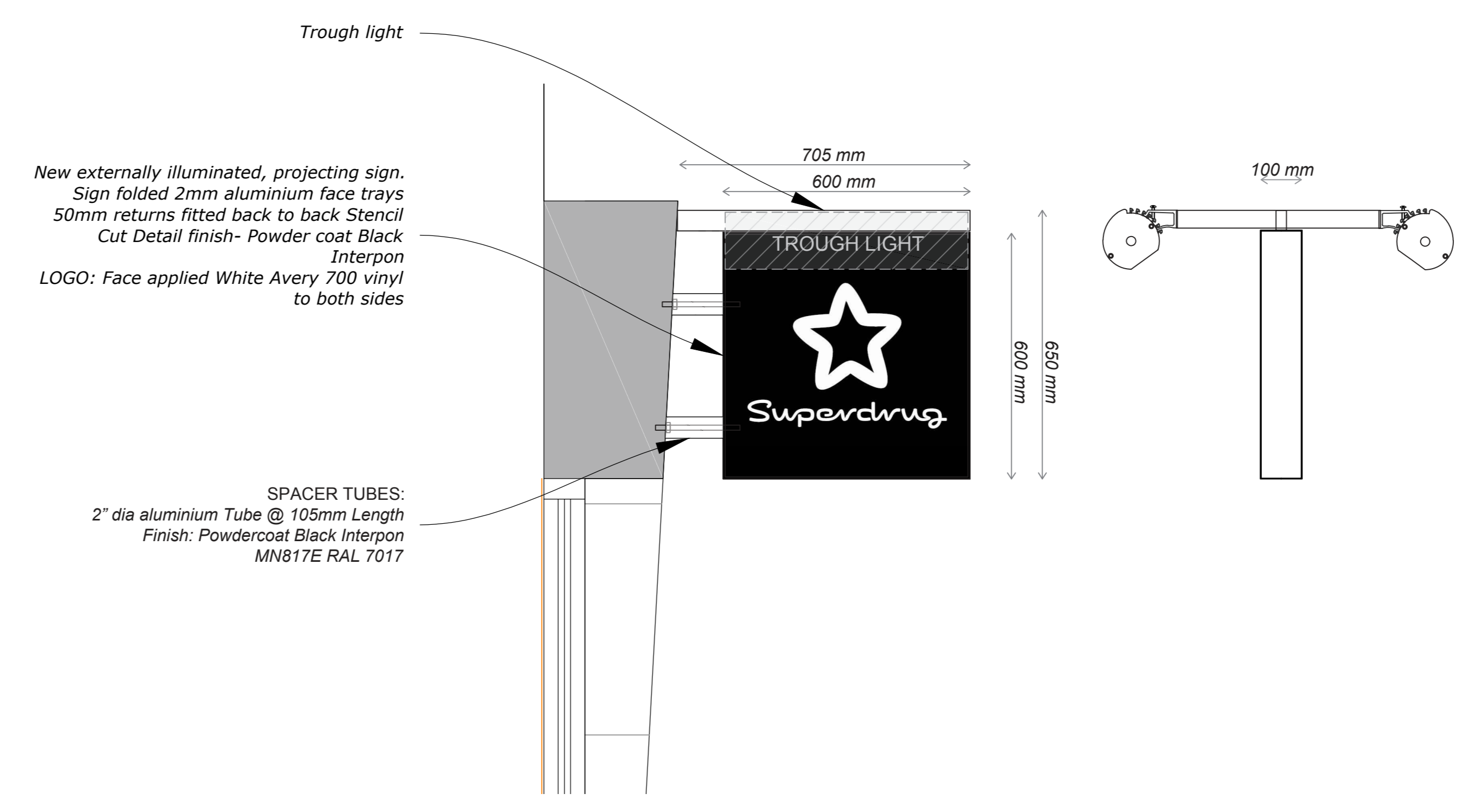
SIGNAGE



**Proposed Elevation**  
Scale 1:20



**Proposed Shop front Section**  
Scale 1:20



**Proposed Projecting Sign**  
Scale 1:10

REV	DATE	INITIALS	REVISION NOTE
A	26.09.16	LK	Updated to L3 issue
B	02.10.16	LK	Updated following Planning office advice Proposed shop front elevation added
C	11.10.16	LK	Trough light for projecting sign added

DRAWING TITLE		PROPOSED SHOP FRONT SECTION & SIGN DETAILS
DRAWING NUMBER		CPS 16 078 008
SCALE	DATE	DRAWN
AS shown @ A1	14.09.16	DL
CHECKED	*	

PROJECT  
133 CLERKENWELL ROAD  
LONDON

STATUS  
**L3**

FOR CONSTRUCTION

118 Abchurch Lane  
City  
City EC4A 3DF

101 BUCKINGHAM ONE BUSINESS PARK  
BURNLEY ROAD  
BURNLEY  
BL1 1BB  
Tel: 01252 811718  
Email: admin@superdrug.co.uk  
Web: www.superdrug.co.uk

**Superdrug**

**cube.**