

Notes

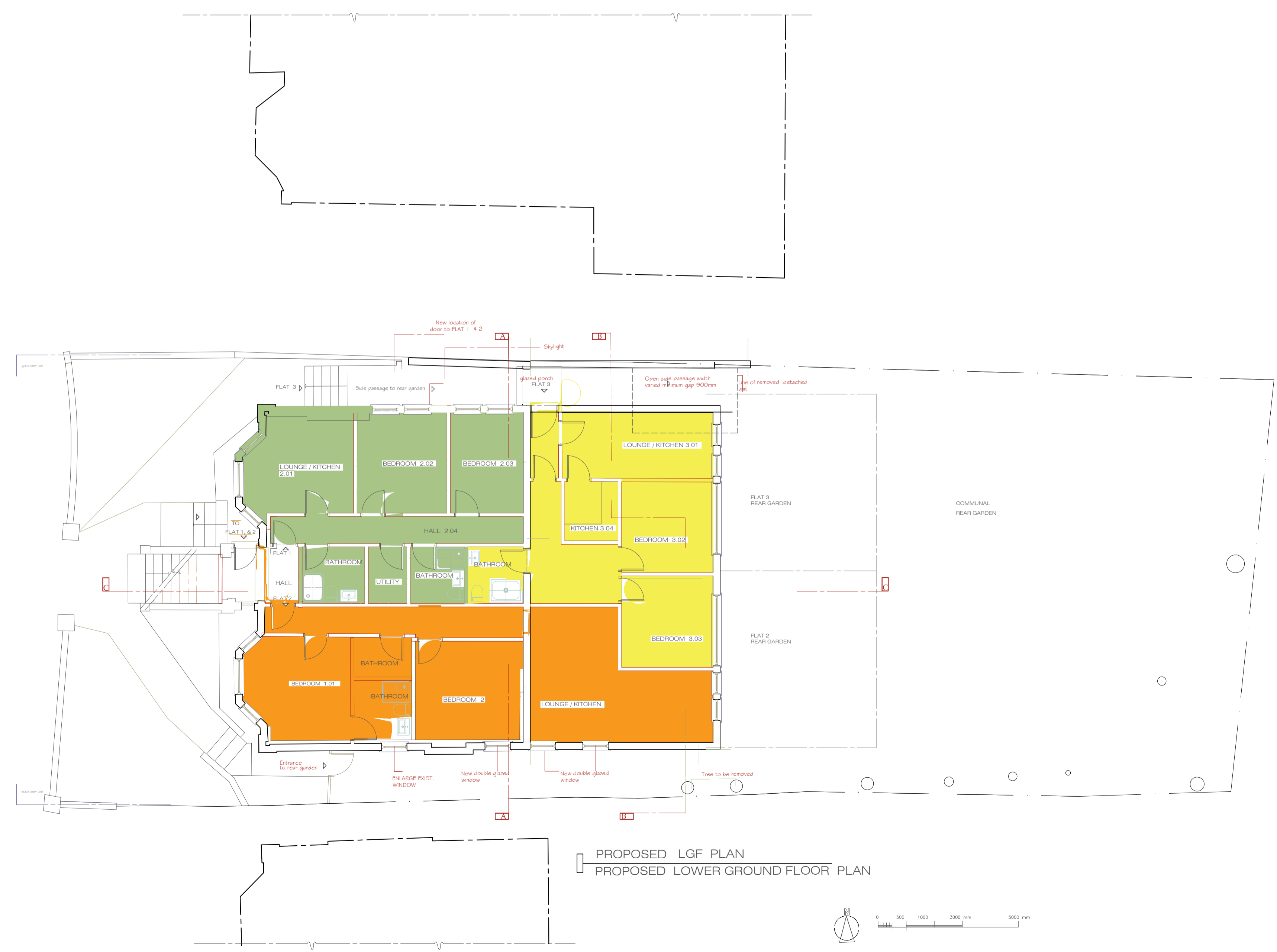
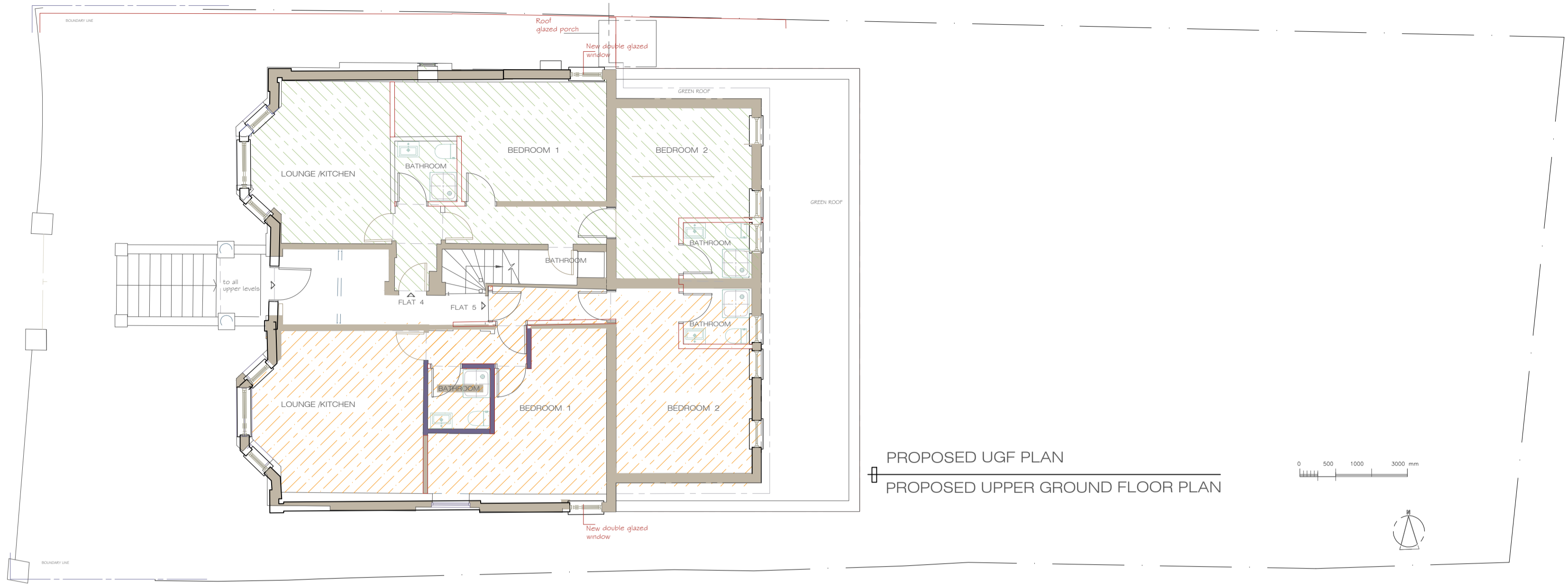
These drawings are strictly copyright and are not to be used, printed or copied in any form unless expressly permitted by ASB Architects. Any scale indicated on the drawing is only correct provided the drawing is printed at the original "Sheet Size" field. This is typically A1 or A3, printed without reduction, @ 100%

This drawing may include information shown in colour as indicated by the "Printing" field. If the drawing is received incorrectly please refer to the sender or Architects.

Do not scale from these drawings. Refer to figured dimensions only and, where these are missing or cannot be inferred from the given dimensions, refer to the Architect for instruction.

Inform the Architect as soon as possible of any discrepancies found on site.

This drawing is to be read in conjunction with the structural engineers' drawings, all other layout and detail drawings together with the Schedule of Works and Specification.



PLANNING APPLICATIONS SET  
Date 8th AUGUST 2016

REVISION
A - 13th JUNE 2016 DRAWING AMENDED
B - 14th JUNE 2016 DRAWING AMENDED
C - 15th JUNE 2016 DRAWING AMENDED
D - 21st JUNE 2016 DRAWING AMENDED
E - 26th JULY 2016 DRAWING AMENDED
F - 1st AUGUST 2016 DRAWING AMENDED
G - 4th AUGUST 2016 DRAWING AMENDED
H - 9th SEPTEMBER 2016 DRAWING AMENDED
J - 20th SEPTEMBER 2016 DRAWING AMENDED
K - 27th SEPTEMBER 2016 DRAWING AMENDED
L - 29th SEPTEMBER 2016 DRAWING AMENDED

Rev.	Date	Notes

**ASB ARCHITECTS**  
215 West End Lane West Hampstead London NW6 1XJ  
T: 020 7431 5221 F: 02074315114 E: amos@asbarchitects.com

Project **58 WEST END LANE LONDON NW6 2NE**

Drawing **PROPOSED LOWER and UPPER GROUND FLOOR PLAN**

Dwg status - Date © **MARCH 2016**

Project Ref **308 / A1** Printing -

SCALE **1: 100** Sheet size **A1**

Dwg No	Rev.
<b>40</b>	<b>L</b>