

Acoustic roof enclosure narrowed and elongated to accommodate layout of ventilation equipment.

Cill height increased to accommodate joinery design internally.

Cill height within existing facade to be lowered to increase daylighting to second floor. Proposed cill height 1200mm internally.

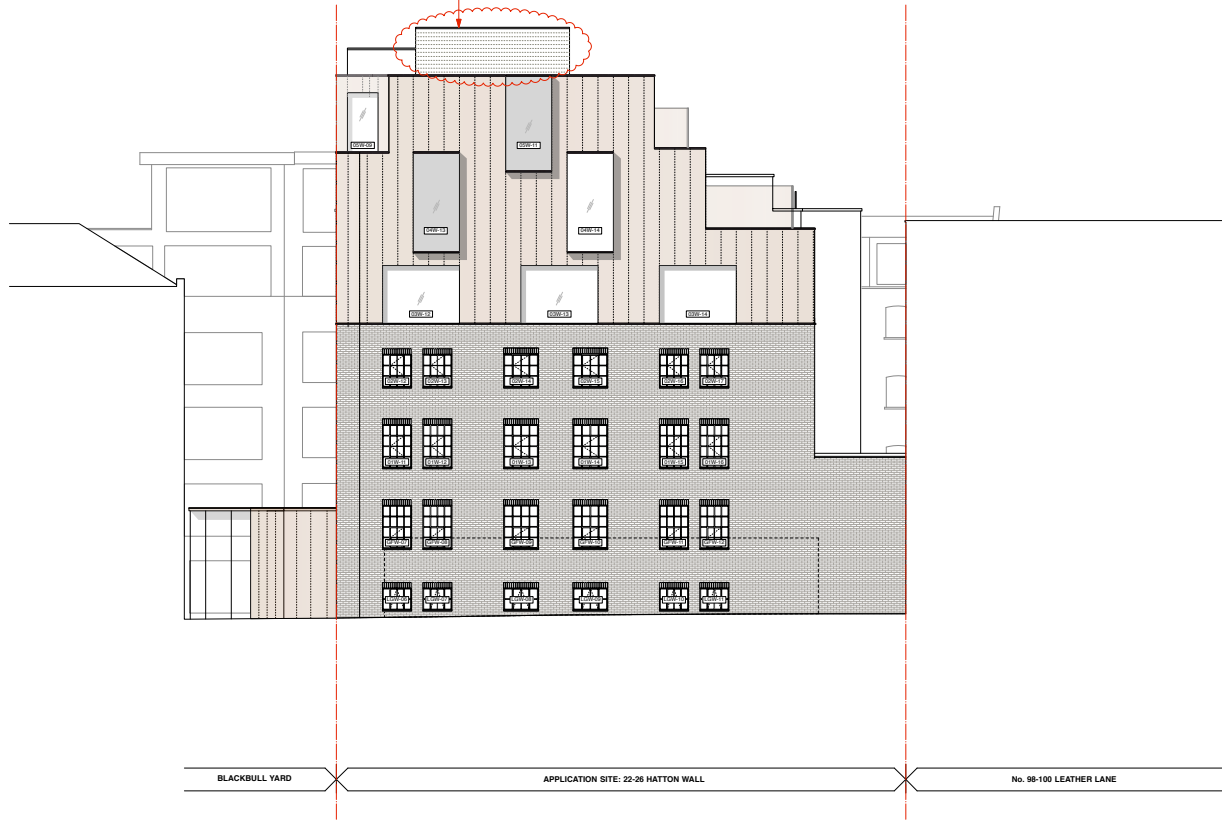


**PLANNING**

© gpad London Ltd.

PROJECT		18-26 HATTON WALL LONDON EC1N 8JH		DRAWING TITLE		FRONT ELEVATION	
CLIENT		BOULTBEE BROOKS (HATTON WALL) LLP		SCALE		1:100@A1	
DATE		MAR 16		DWG BY		DW	
CHKD.		JA		DWG NO.		435-PA-B.02	
REV.				REV.		E	
T.		020 7549 2133		Unit 1		9a Dollington Street	
F.		020 7549 2144		Clerkenwell		London EC1V 0BQ	
E.		info@gpadltd.com		www.gpadltd.com			

Acoustic roof enclosure narrowed and elongated to accommodate layout of ventilation equipment.



BLACKBULL YARD

APPLICATION SITE: 22-26 HATTON WALL

No. 98-100 LEATHER LANE

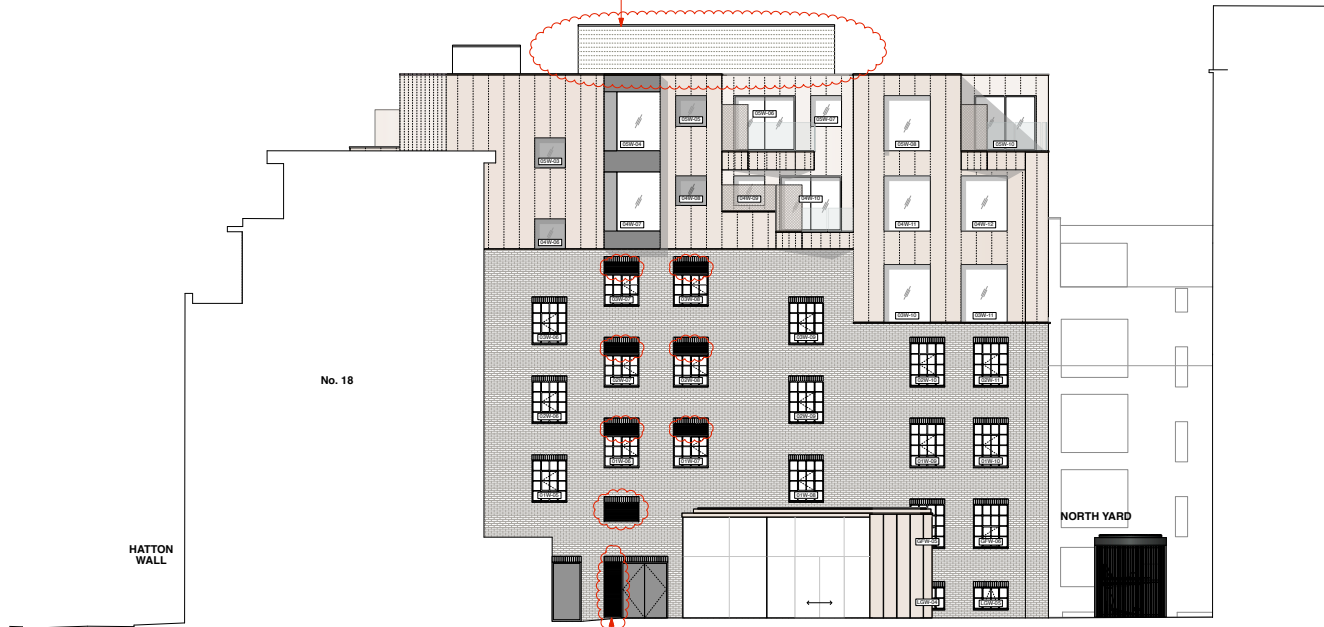
0 2m 4m 6m 8m 10m

**PLANNING**

© gpad London Ltd.

PROJECT		18-26 HATTON WALL LONDON EC1N 8JH		DRAWING TITLE		REAR ELEVATION	
CLIENT		BOULTBEE BROOKS (HATTON WALL) LLP		gpad		architecture & interior design	
SCALE	1:100@A1	DATE	MAR 16	DWG BY	DW	REV.	
CHKD.	JA	DWG NO.	435-PA-B.03			E	
				T: 020 7549 2133		Unit 1	
				F: 020 7549 2144		9a Dollington Street	
				E: info@gpadltd.com		Clerkenwell	
				W: www.gpadltd.com		London EC1V 0BQ	

Acoustic roof enclosure narrowed and elongated to accommodate layout of ventilation equipment.



Ventilation louvres introduced within east facade.  
 Louvres to be integrated within window heads and doors into residential bin store.  
 Louvres to be powder coated to match windows and doors.

See 'Assessment of External Noise Emissions from Heat Recovery Units' from SRL Acoustic Consultants attached.



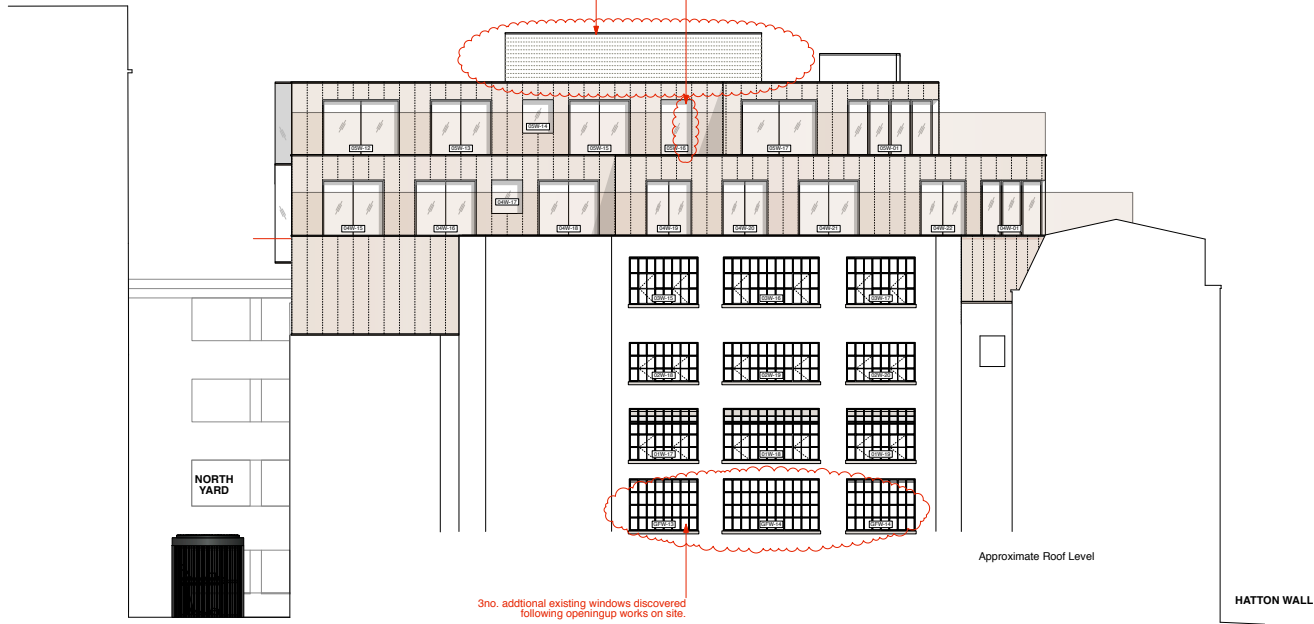
**PLANNING**

© gpad London Ltd.

PROJECT		18-26 HATTON WALL LONDON EC1N 8JH		DRAWING TITLE		EAST ELEVATION	
CLIENT		BOULTBEE BROOKS (HATTON WALL) LLP		DRAWING NO.		435-PA-B.04	
SCALE	1:100@A1	DATE	MAR 16	DWG BY	DW	REV.	E
CHKD.	JA						
T. 020 7549 2133		F. 020 7549 2144		E. info@gpadltd.com		W. www.gpadltd.com	
Unit 1 9a Dollington Street Clerkenwell London EC1V 0BQ							

Acoustic roof enclosure narrowed and elongated to accommodate layout of ventilation equipment.

Width of window OSW-16 increased to improve symmetry of facade.  
All windows align with 600mm cladding module in accordance with application for discharge of planning conditions.



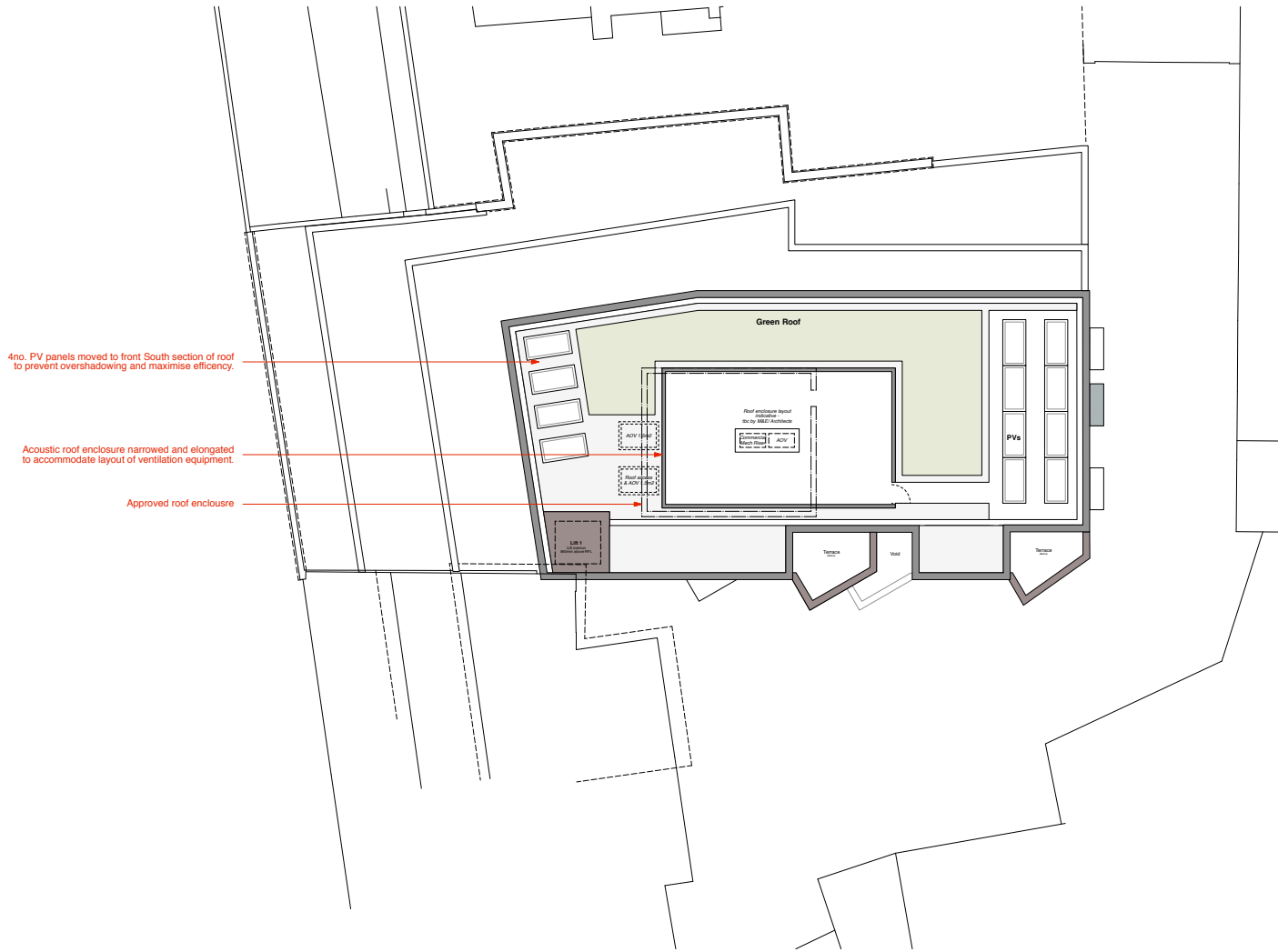
3no. additional existing windows discovered following opening up works on site.



**PLANNING**

© gpad London Ltd.

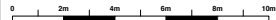
PROJECT		18-26 HATTON WALL LONDON EC1N 8JH		DRAWING TITLE		WEST ELEVATION	
CLIENT		BOULTBEE BROOKS (HATTON WALL) LLP		SCALE		1:100@A1	
DATE		MAR 16		DWG BY		DW	
REV.		JA		DWG NO.		435-PA-B.05	
						E	
				T. 020 7549 2133		Unit 1	
				F. 020 7549 2144		9a Dollington Street	
				E. info@gpadltd.com		Clerkenwell	
				W. www.gpadltd.com		London EC1V 0BQ	



4no. PV panels moved to front South section of roof to prevent overshadowing and maximise efficiency.

Acoustic roof enclosure narrowed and elongated to accommodate layout of ventilation equipment.

Approved roof enclosure



**PLANNING**

© gpad London Ltd.

PROJECT		18-26 HATTON WALL LONDON EC1N 8JH		DRAWING TITLE		ROOF PLAN	
CLIENT		BOULTBEE BROOKS (HATTON WALL) LLP		DRAWING NUMBER		435-PA-B.26	
SCALE	1:100 @ A1	DATE	MAR 16	DWG BY	DW	REV.	E
CHKD.	JA	DWG NO.		435-PA-B.26		E	
T. 020 7549 2133 F. 020 7549 2144 E. info@gpadltd.com W. www.gpadltd.com				Unit 1 9a Dollington Street Clerkenwell London EC1V 0BQ			