

Camden Core Strategy 2010-2025

Local Development Framework



If you would like this document in large print or Braille, or in another language, please contact 020 7974 5615

Find out more about this document and the LDF by visiting camden.gov.uk/ldf or by calling the LDF hotline 020 7974 5615/2043.

Forward Planning
London Borough of Camden
Town Hall Extension
Argyle Street
London WC1H 8EQ

Published November 2010.

Camden's Local Development Framework. Core Strategy 2010.

CS5. Managing the impact of growth and development

- 5.1 The overall approach of the Core Strategy, as set out in policy CS1, is to manage Camden's growth to make sure that its opportunities and benefits are delivered and sustainable development is achieved, while continuing to conserve and enhance the features that make Camden such an attractive place to live, work and visit. This flows from the Camden Community Strategy theme of a sustainable Camden that adapts to a growing population. Policy CS5 provides more information on our approach to managing the impact of growth in the borough.

CS POLICY

CS5 – Managing the impact of growth and development

The Council will manage the impact of growth and development in Camden. We will ensure that development meets the full range of objectives of the Core Strategy and other Local Development Framework documents, with particular consideration given to:

- a) providing uses that meet the needs of Camden's population and contribute to the borough's London-wide role;
- b) providing the infrastructure and facilities needed to support Camden's population and those who work in and visit the borough;
- c) providing sustainable buildings and spaces of the highest quality; and
- d) protecting and enhancing our environment and heritage and the amenity and quality of life of local communities.

The Council will protect the amenity of Camden's residents and those working in and visiting the borough by:

- e) making sure that the impact of developments on their occupiers and neighbours is fully considered;
- f) seeking to ensure development contributes towards strong and successful communities by balancing the needs of development with the needs and characteristics of local areas and communities; and
- f) requiring mitigation measures where necessary.

Making sure development achieves the objectives of the Core Strategy

- 5.2 Central to managing Camden's future growth is the need to consider not just the scale and nature of that growth, but how it is provided and the effect on those who live in the area and the borough as a whole. All development in Camden, large or small, whether located in growth areas, highly accessible locations or in other parts of the borough, should take place in accordance with all relevant policies in the Core Strategy and the other documents that form part of Camden's Local Development Framework (see paragraph 4 in the Introduction) to ensure that the Council's vision for the borough is achieved. The Council will seek to ensure that the borough's growth brings benefits and opportunities to all.
- 5.3 The second section of this Core Strategy, *Meeting Camden's needs – Providing homes, jobs and facilities*, sets out our approach to providing the land uses, infrastructure and facilities that are needed to support Camden's communities, workers and visitors. This includes places to live, work and shop, community facilities and provision for walking, cycling and public transport. The section also sets out our approach to the unique issues faced in Central London, the home to many of the uses that contribute to London's role as a capital and major international city, as well as long-established residential communities.

- 5.4 One of the key elements of managing Camden’s growth is securing the infrastructure and services needed to support Camden’s growing numbers of residents, workers and visitors. To identify the infrastructure need in the borough in future years we commissioned the Camden Infrastructure Study 2009. This work formed the basis of the schedule in Appendix 1, which set out identified key infrastructure programmes and projects including transport, utilities, emergency services, education, health and other community facilities. It gives information on the nature of each infrastructure scheme, where it will be located, who will lead on its delivery and when it is expected to be provided. As the boundaries of the growth area are relatively tightly drawn, taking in the main development opportunities, the infrastructure to support a particular growth area may be provided outside its boundary. Please see section 19 – *Delivering and monitoring the Core Strategy* for more detail on our approach to infrastructure provision. In addition, the individual sections in the Core Strategy also contain details of infrastructure requirements and provision that are relevant to that section (for example, policy CS15 on open space and policy CS11 on transport.)
- 5.5 The third section of the Core Strategy, *A sustainable and attractive Camden – Tackling climate change and improving and protecting Camden’s environment and quality of life*, focuses on making sure that growth is sustainable and properly takes into account the character of Camden and the aspects of the borough that make it such an attractive place to live, work and visit. It sets out how we intend to make Camden a low carbon, low waste borough; deal with climate change; and protect, and where possible enhance, our built environment, heritage and open spaces. It also sets out our approach to improving the safety and health of the community.
- 5.6 Our Camden Development Policies Local Development Framework document will be one of the main mechanisms by which we will seek to deliver to vision and objectives in the Core Strategy. It sets out planning policies that provide more detail of our approach to many of the matters covered in this Core Strategy. We will use Camden Development Policies alongside the Core Strategy when we determine applications for planning permission.

Protecting amenity

- 5.7 Camden’s high level of amenity – the features of a place that contribute to its attractiveness and comfort – is a major factor in the quality of life of the borough’s residents, workers and visitors and fundamental to Camden’s attractiveness and success. However, Camden’s inner London location, the close proximity of various uses and the presence of major roads and railways can mean that privacy, noise and light can be particular issues in the borough.
- 5.8 Protecting amenity is, therefore, a key part of successfully managing growth in Camden. We will expect development to avoid harmful effects on the amenity of existing and future occupiers and nearby properties or, where this is not possible, to take appropriate measures to minimise potential negative impacts. More detail and guidance on our approach to amenity is contained in Camden Development Policies policy DP26 – and our Camden Planning Guidance supplementary document. Other policies in Camden Development Policies also contribute to protecting amenity in the borough by setting out our detailed approach to specific issues, such as the impact of food, drink and entertainment uses (policy DP12), noise and vibration (policy DP28) and air quality (policy DP32)

Promoting successful communities

- 5.9 A key element to our overall strategy of managing Camden’s future growth is to ensure that the opportunities and benefits of this growth are delivered in a way that meets the needs of Camden’s residents and promotes strong and successful communities. In assessing development proposals, the Council will take into account the needs and benefits of the development alongside the individual characteristics and needs of the local area and community, and will seek to strike a balance between them. Where relevant, we will take into account the cumulative impacts of developments, or particular types of development, on local areas and communities.

Key evidence and references

- Camden Together – Camden’s Sustainable Community Strategy; 2007-2012
- The London Plan (consolidated with alterations since 2004); Mayor of London; 2008



CS14. Promoting high quality places and conserving our heritage

- 14.1 Camden does not have a single built character but is made up of many diverse areas, each with their own identity. The southern part of the borough, which forms part of Central London, is characterised by a high density built environment and complex mix of uses. The central part of the borough contains several town centres surrounded by areas of medium-density housing and some employment uses. The north of the borough is predominantly residential of a lower density with substantial open space at Hampstead Heath. Throughout the borough there are examples of Camden's unique architectural heritage, with many high quality buildings and places, old and new. This is reflected in our large number of conservation areas and listed buildings, which have been recognised for their special architectural or historic interest.
- 14.2 Our overall strategy is to sustainably manage growth in Camden so it meets our needs for homes, jobs and services in a way that conserves and enhances the features that make the borough such an attractive place to live, work and visit. Policy CS14 plays a key part in achieving this by setting out our approach to conserving and, where possible, enhancing our heritage and valued places, and to ensuring that development is of the highest standard and reflects, and where possible improves, its local area. Policy CS13 above and policy DP22 in Camden Development Policies set out our approach to ensuring that design in the borough is sustainable and that schemes include measures to minimise the effects of, and adapt to, climate change.

CS POLICY

CS14 – Promoting high quality places and conserving our heritage

The Council will ensure that Camden's places and buildings are attractive, safe and easy to use by:

- | | |
|---|---|
| <p>a) requiring development of the highest standard of design that respects local context and character;</p> <p>b) preserving and enhancing Camden's rich and diverse heritage assets and their settings, including conservation areas, listed buildings, archaeological remains, scheduled ancient monuments and historic parks and gardens;</p> | <p>c) promoting high quality landscaping and works to streets and public spaces;</p> <p>d) seeking the highest standards of access in all buildings and places and requiring schemes to be designed to be inclusive and accessible;</p> <p>e) protecting important views of St Paul's Cathedral and the Palace of Westminster from sites inside and outside the borough and protecting important local views.</p> |
|---|---|

Excellence in design

- 14.3 Camden has many special and unique places and historic and modern buildings of the highest quality. As well as preserving this rich heritage, we should also be contributing to it by making sure that we create buildings of equally high quality that will be appreciated by future generations. The design of the places and buildings that make up our local environment affects us all and our quality of life. High quality design is visually interesting and attractive but it is not just about what things look like. Good design makes places that put people first, are welcoming, feel safe and are enjoyable and easy to use for everyone, whether they are living in, working in or just passing through the borough.

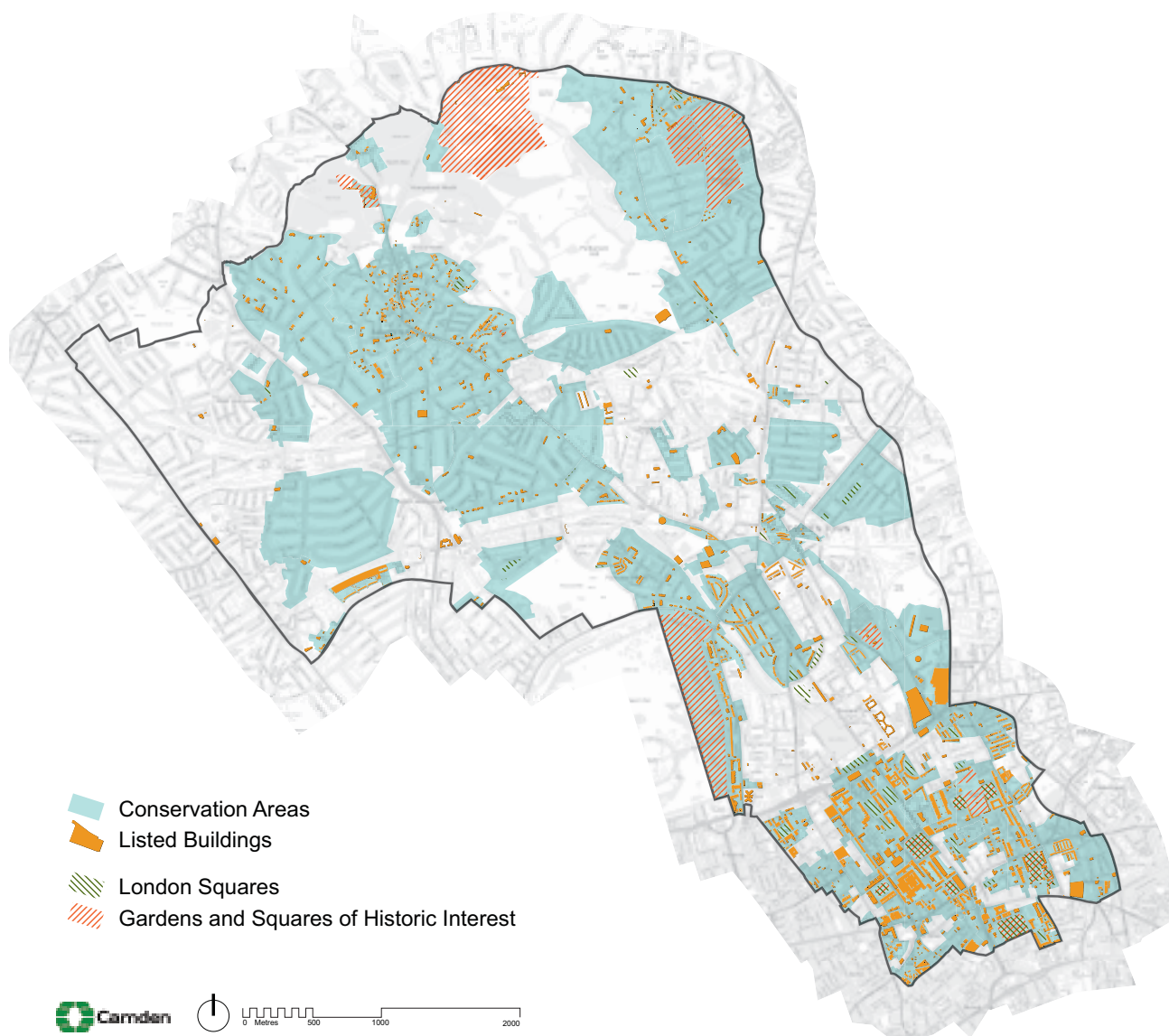


- 14.4 Development schemes should improve the quality of buildings, landscaping and the street environment and, through this, improve the experience of the borough for residents and visitors. The Council will therefore insist on high quality design throughout the borough. In accordance with government guidance in Planning Policy Statement (PPS) 1 – *Delivering Sustainable Development* we will not accept design that is considered inappropriate to its context or which fails to take opportunities to improve the character and quality of an area and the way it functions. Please see Camden Development Policies (policy DP24) for more detailed guidance on our approach to the design of new development and alterations and extensions. When assessing design, we will also take into account government/CABE guidance *By Design – Urban Design in the planning system: towards better practice* and our own Camden Planning Guidance supplementary document.
- 14.5 The Council is working with its partners to promote and celebrate excellence in design and improve public buildings, landscaping and the street environment; for example through the Camden Design Initiative, which seeks to improve public space and the built environment and encourage involvement, awareness and understanding of good design, including the bi-annual Camden Design Awards, which recognise high quality and innovative designs.
- 14.6 Good design is safe and accessible, and responds flexibly to the needs of its users. It creates buildings that have minimal negative impact on the environment, during construction and beyond. The construction and use of buildings currently accounts for around half of national carbon emissions and it is therefore vital that new and redeveloped buildings are designed to have a beneficial impact on their environment. See CS13 – *Tackling climate change through promoting higher environmental standards* and CS17 – *Making Camden a safer place* for our approach to these matters.
- 14.7 High quality design also takes account of its surroundings and what is distinctive and valued about the local area. Camden is made up of a diversity of areas, each with their own distinctive character, created by many elements such as architectural style and layout, social and economic history, landscaping and mix of uses – as summarised in the description of Camden’s character below. As Camden is a densely built-up borough where most development involves the replacement, extension or conversion of existing buildings, taking account of context and local character is particularly important. The Council will therefore expect the design of buildings and places to respond to the local area and its defining characteristics and reinforce or, if appropriate, create local distinctiveness.
- 14.8 While tall buildings offer the opportunity for intensive use, their siting and design should be carefully considered in order to not detract from the nature of surrounding places and the quality of life for those living and working around them. Applications for tall buildings will be assessed against policy CS14 and policies DP24 – *Securing high quality design* and DP25 – *Conserving Camden’s heritage* in Camden Development Policies, along with the full range of policies on mixed use, sustainability, amenity and microclimate. and other relevant policies. Effect on views, impact on local microclimate and provision of communal and private amenity space will also be important considerations.

Camden's heritage

- 14.9 Camden has a rich architectural heritage with many special places and buildings from throughout Camden's history (see map 6). 39 areas, covering much of the borough, are designated as conservation areas, recognising their special architectural or historic interest and their character and appearance. We have prepared conservation area statements, appraisals and management strategies that provide further guidance on the character of these areas. We will take these documents into account as material considerations when we assess applications for planning permission and conservation area consent in these areas.
- 14.10 Over 5,600 buildings and structures in Camden are nationally listed for their special historical or architectural interest, and 53 of the borough's squares are protected by the London Squares Preservation Act 1931. In addition, 14 open spaces in Camden are on English Heritage's Register of Parks and Gardens of Special Historic Interest. The Council will consult with English Heritage over proposals affecting these parks and gardens. We also encourage the restoration and management of Parks and Gardens of Special Historic Interest and London Squares to enhance their value. Camden also has a generally well-preserved archaeological heritage, with 13 identified archaeological priority areas, although this can be vulnerable to modern development and land use.

Map 6: Heritage



This map is based on Ordnance Survey Material with the permission of Ordnance Survey on behalf of the Controller of Her Majesty's Stationery Office ©. Unauthorised reproduction infringes Crown copyright and may lead to prosecution or civil proceedings. Licence number LA100019728, year 2010.

- 14.11 We have a responsibility to preserve and, where possible, enhance our heritage of important areas and buildings. Policy DP25 in Camden Development Policies provides more detailed guidance on the Council's approach to protecting and enriching the range of features that make up our built heritage.
- 14.12 Architectural detail, materials, colour and structures such as walls can make a significant contribution to the appearance of an area, but can often be altered without the need for planning permission. Cumulatively, many minor building works can gradually erode the quality of an area and undermine the quality of conservation areas. We will therefore make use of 'Article 4 Directions' in appropriate locations to bring some minor works under planning control. We are intending to introduce such measures in the conservation areas of Belsize, Hampstead, and Swiss Cottage, where loss of historic character through cumulative change is apparent. Primrose Hill conservation area already benefits from a comprehensive Article 4 Direction, which has helped to retain its high quality historic character.

Landscaping and public realm

- 14.13 The quality of our streets and public spaces affects the quality of all our lives. We enjoy being in and passing through attractive, clean and well-maintained places, but are discouraged from walking in and through areas with a poor environment. An enhanced public realm should integrate transport and land use, contribute to improved walking and cycling environments, respect and reinforce local identity and character, attract people to the area and encourage the use of streets and public spaces to create diverse, vibrant and lively places.
- 14.14 The Council is committed to improving Camden's streets and public spaces and has carried out many improvement schemes with many more ongoing and planned. We have produced a Camden Streetscape Design Manual to raise the standard of street works throughout the borough. This sets standards for our own works and provides guidance for other agencies. It encourages respect for local character and promotes high quality, clutter-free design to make streets and public places that are safe and easy to use for all.
- 14.15 A number of studies on streets and spaces have been produced, particularly for the south of the borough (e.g. Bloomsbury, King's Cross and St Giles/Tottenham Court Road). These have been commissioned and funded by a range of organisations (including TfL, LDA, Design for London and UCL) sometimes in partnership with the Council. It is procedurally difficult for the Council to adopt these non-statutory documents as formal planning or other guidance. We will therefore look to draw on the best of this work to create a long-term vision for these areas, emphasising local character and providing a high quality environment for walking, which is formally agreed by the Council.
- 14.16 In order to improve the environment for walking in the borough, Camden is committed to the 'Legible London' concept which aims to improve how easily pedestrians can understand the layout of the capital and find their way around by introducing clear and consistent signage and maps. The programme has begun in Covent Garden and Bloomsbury, and future schemes are anticipated around the borough. Camden has also established a 'Place Shaping Board' to consider the most appropriate ways to shape the services, facilities, infrastructure and public realm to meet the needs of current and future populations (see section 4 – *Delivering and Monitoring the Core Strategy*).
- 14.17 Further information on measures being taken by the Council and its partners to improve the quality of our streets and public places is included in CS2 – *Growth areas*, CS8 – *Promoting Camden's centres and shops*, CS11 – *Promoting sustainable and efficient travel*, CS15 – *Protecting and improving our parks and open spaces and encouraging biodiversity*, and CS17 – *Making Camden a safer place*.
- 14.18 High quality landscaping plays an important role in the attractiveness and character of our surroundings. It can improve the setting of buildings, bring trees and other greenery into built-up areas to relieve the hard landscaping and provide shade, and provide habitats for wildlife. The Council will expect development schemes to provide a high standard of landscaping and boundary features, such as walls and fences. We will encourage appropriate use of landscaping in the form of 'green roofs', 'brown roofs' and 'green walls' which have a number of environmental benefits (e.g. in providing wildlife habitats, in helping to cool and insulate buildings and in retaining water, helping to

reduce flooding), as well as being visually attractive. More detail on our approach to landscaping is set out in the Council's Camden Planning Guidance supplementary document and policy DP22 in Camden Development Policies.

Access

- 14.19 Good access benefits everyone. However, many people are disadvantaged by poor access to facilities and vulnerable and disadvantaged groups, such as the elderly and disabled people, can be particularly affected. Poor access can be caused by difficulties in reaching facilities or by difficulties in using the facilities themselves. The Council requires new buildings and spaces to be inclusive and accessible to all. As accessibility is influenced by perceptions as well as physical factors, buildings should also be designed to appear, as well as be, fully accessible. The Council will require Design and Access Statements for developments to show how the principles of inclusive design, ensuring access for all, have been integrated into the proposed development, and how inclusion will be maintained and managed.
- 14.20 Making roads and pavements and the spaces between buildings fully accessible is as important as making the buildings themselves accessible. The Council will seek improvements for all pedestrians to ensure good quality access and circulation arrangements, including improvement to existing routes and footways. The Camden Streetscape Design Manual and our Camden Planning Guidance supplementary document provide more detailed guidance on this issue.

Views

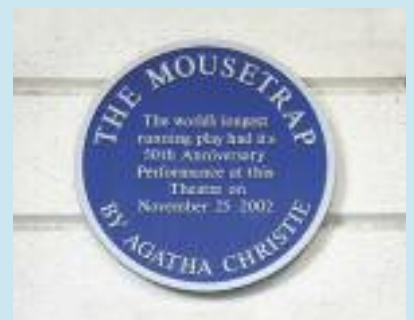
- 14.21 A number of London's most famous and valued views originate in, or extend into, Camden. These are:
- views of St Paul's Cathedral from Kenwood, Parliament Hill and Primrose Hill;
 - views of the Palace of Westminster from Primrose and Parliament Hills; and
 - background views of St Paul's from Greenwich and Blackheath.
- 14.22 The Council will protect these views in accordance with London-wide policy and will resist proposals that would harm them. Where existing buildings that affect a view are redeveloped it is expected that any replacement building will be of a height that does not harm the view. The current framework for protecting these views is set by the London Plan (policies 4B.16 – 4B.18) and the Mayor's London View Management Framework supplementary planning guidance.
- 14.23 The Council will also consider the impact of a scheme, in terms of the townscape, landscape and skyline, on the whole extent of a view ('panorama'), not just the area in the view corridor. Developments should not detract from the panorama as a whole and should fit in with the prevailing pattern of buildings and spaces. They should seek to avoid buildings that tightly define the edges of the viewing corridors and not create a crowding effect around the landmark.
- 14.24 The Council will also seek to protect locally important views that contribute to the interest and character of the borough. These may include:
- views of and from large public parks and open spaces, such as Hampstead Heath, Kenwood Estate, Primrose Hill and Regent's Park, including panoramic views, as well as views of London Squares and historic parks and gardens;
 - views relating to Regent's Canal;
 - views into and from conservation areas; and
 - views of listed and landmark buildings and monuments and statutes (for example, Centrepoint, St Stephen's, Rosslyn Hill and St George's, Bloomsbury).
- 14.25 We will seek to ensure that development is compatible with such views in terms of setting, scale and massing and will resist proposals that we consider would cause harm to them. Development will not generally be acceptable if it obstructs important views or skylines, appears too close or too high in relation to a landmark or impairs outlines that form part of the view. Further guidance on important local views is set out in our supplementary planning documents, for example in individual conservation area statements, appraisals and management strategies and the Planning Framework for the Tottenham Court Road Station and St Giles High Street Area.

Camden's character

Camden is characterised by a great richness and variety in its built and natural environment, with a valuable heritage of local, national and international significance. The following section describes the places, buildings and features that give Camden its distinctive character.

The southern part of the borough is where most of Camden's future growth will take place. It forms part of Central London and has a richly varied and dense character. The planned Georgian streets and squares (e.g. Bedford, Russell, Fitzroy) of Bloomsbury are evidence of the early expansion of London in a form that was architecturally groundbreaking. Modest mews developments to the rear of the terraces contrast in scale and are a particularly characteristic type here and elsewhere in the borough. Regents Park and Nash's 1820s residential development sit at the south western boundary of the borough, contrasting with the earlier Georgian developments in the area.

King's Cross and Euston are parts of the borough that are expected to experience the most change and development over the next fifteen years. Railways have had a significant impact on the appearance of the borough from the 19th century to the present day. These brought monumental architecture and inward migration to the borough and their viaducts, cuttings, tunnels and buildings still affect the shape of development in many parts of Camden, in particular to the north of Euston Road. King's Cross was the largest station in England when it opened and is the earliest great London terminus still intact in its original form. St Pancras (by George Gilbert Scott), now the new London terminus for Eurostar, can claim to be Britain's most impressive station in terms of both architecture and engineering and the station's dramatic roof line forms an important local landmark. Euston station, its ancillary accommodation and railway lines have a major impact on the nature of its surroundings and its future redevelopment will create opportunities to improve the local environment and links between neighbouring areas.





The Inns of Court were some of the earliest establishments in the southern part of the borough. The historic buildings, courtyards and squares of Lincoln's Inn and Gray's Inn give a distinctive atmosphere to this part of Camden, and create oases away from surrounding busy roads. Camden's Central London area also contains Seven Dials with its unusual star-shaped street layout and sundial pillar and the brick, semi-industrial buildings and intimate spaces of Hatton Garden, which were developed in the 19th century to house the workshops and offices of the jewellery trade. The area remains an internationally significant jewellery quarter.

Camden is home to a large number of further education establishments and most are located in the southern part of the borough, including the University of London, London School of Tropical Medicine, Central St Martin's College of Art and Design and the Royal Academy of Dramatic Art. These play a significant role in shaping the character and appearance of this part of the borough. The south of the borough also houses a number of nationally important hospitals and medical research institutions, including Great Ormond Street Hospital, the National Hospital for Neurology and Neurosurgery and the Wellcome Trust.



The town centres of Camden Town, Kentish Town and Kilburn High Road are key elements in **the central part of the borough**. These centres developed in a piecemeal fashion along historic routes into London. They are now marked by continuous, close grained development with commercial units at ground floor level on either side of the road, with terraced housing of a similar density on the streets to the east and west, and little open space. Buildings types are generally consistent in appearance, and public houses are frequent landmarks, which echo the original inns and travellers rests along the historic routes. There is a narrow range of scale and height, and dwellings usually have small gardens to front and rear. Camden Town is strongly characterised by its markets and entertainment. These create a strong draw for tourists and influence the style and appearance of development, which is in many cases colourful and individual.

The areas between these major roads and town centres are characterised by speculative, residential development from the mid to late 19th century for the then new middle classes. These show a variety of distinctive architectural forms and scales, with detached and semi-detached houses in classical Italianate form in Belsize and an eclectic variety of styles including neo-Gothic, Queen Anne, Domestic Revival, Arts & Crafts in Fitzjohns/Netherhall, Redington/Frognaal and South Hampstead/Swiss Cottage. Gospel Oak, West Hampstead and the southern parts of Dartmouth Park were developed to a higher density with terraced houses, smaller gardens and have a more urban feel than Camden's other residential areas.

Social housing schemes are also an important element in the borough's built environment. St Andrews House on Saffron Hill is the oldest surviving public housing block in London whilst early 20th century examples include the London County Council's Bourne Estate on Leather Lane. The LLC's Ossulston Estate is considered the most important inner-city estate of the inter-war period. Post-war examples illustrate an architecturally ambitious programme of housing schemes by Camden Council following its creation in 1965, many of which are listed. The characteristic form was a megastructure of stepped terraces. This low rise, high density approach reflected traditional terraced housing, but provided light, privacy and private open space for all levels of accommodation. Examples are Brunswick Centre, and the estates of Fleet Road, Alexandra Road, Maiden Lane and Highgate New Town.

The Regent's Canal runs through the centre of the borough. Although it is often hidden from surrounding areas, it provides an area of nature conservation interest and amenity space along its course through King's Cross and Camden Town to Regent's Park.

The northern part of the borough benefits from the presence of the large open space of Hampstead Heath, which provides amenity and leisure space, a verdant setting to the surrounding development and famous views across London. Hampstead and Highgate are derived from medieval hamlets and have clearly defined village centres which reflect their origins. They have a variety of building types from cottages and terraces to detached houses and grand residences, with a generally densely packed, high quality urban grain of a range of styles, scales and ages. Both areas contain many high quality, architect-designed houses from the 19th and 20th centuries, many of which have become important parts of the local heritage and are listed for their national significance.



Key evidence and references

- Conservation Area Statements/Appraisals/Management Strategies; London Borough of Camden; various dates
- Camden Walking Plan Second Edition 2006
- Camden Streetscape Design Manual 2005
- Planning Policy Guidance 16 – Archaeology and planning; DETR; 1990
- Conservation Principles, Policies and Guidance, English Heritage, 2008
- By Design: Urban Design in the Planning System – Towards Better Practice; DETR/CABE; 2000
- Planning Policy Statement 1 – Delivering Sustainable Development; ODPM; 2005
- Planning Policy Statement 5 – Planning for the Historic Environment; CLG; 2010
- Planning Policy Guidance 15 – Planning and the Historic Environment; DoE; 1994
- The London Plan (consolidated with Alterations since 2004); Mayor of London; 2008
- London View Management Framework Supplementary Planning Guidance; Mayor of London; 2007
- Sustainable design, climate change and the built environment; CABE Briefing; 2007
- Easy Access to Historic Buildings, English Heritage, 2004
- Easy Access to Historic Landscapes, English Heritage, 2005
- Seeing History in the View: Methodology for assessing the heritage value within views, English Heritage, 2008
- Guidance on Tall Buildings, English Heritage/CABE, 2007



Camden Development Policies 2010-2025

Local Development Framework



**If you would like this document in large print
or Braille, or in another language, please
contact 020 7974 5615**

Find out more about this document and the LDF by visiting camden.gov.uk/ldf
or by calling the LDF hotline 020 7974 5615/2043.

Forward Planning
London Borough of Camden
Town Hall Extension
Argyle Street
London WC1H 8EQ

Published November 2010.

Camden's Local Development Framework. Development Policies.

Improving and protecting our environment and quality of life

DP24. Securing high quality design

- 24.1 Core Strategy policy CS14 – *Promoting high quality places and conserving our heritage* sets out the Council’s overall strategy on promoting high quality places, seeking to ensure that Camden’s places and buildings are attractive, safe, healthy and easy to use and requiring development to be of the highest standard of design that respects local context and character. Camden has a unique and rich built and natural heritage, with many areas with their own distinct character, created by a variety of elements including building style and layout, history, natural environment including open spaces and gardens, and mix of uses. We have a duty to respect these areas and buildings and, where possible, enhance them when constructing new buildings and in alterations and extensions.
- 24.2 Policy DP24 contributes to implementing the Core Strategy by setting out our detailed approach to the design of new developments and alterations and extensions. These principles will ensure that all parts of Camden’s environment are designed to the highest possible standards and contribute to providing a healthy, safe and attractive environment.
- 24.3 The Core Strategy also sets out our approach to other matters related to design, such as tackling climate change through promoting higher standards (CS13), the importance of community safety and security (CS17) and protecting amenity from new development (CS5). Further guidance on design is contained in our Camden Planning Guidance supplementary document.

DP POLICY

DP24 – Securing high quality design

The Council will require all developments, including alterations and extensions to existing buildings, to be of the highest standard of design and will expect developments to consider:

- | | |
|---|--|
| <ul style="list-style-type: none"> a) character, setting, context and the form and scale of neighbouring buildings; b) the character and proportions of the existing building, where alterations and extensions are proposed; c) the quality of materials to be used; d) the provision of visually interesting frontages at street level; | <ul style="list-style-type: none"> e) the appropriate location for building services equipment; f) existing natural features, such as topography and trees; g) the provision of appropriate hard and soft landscaping including boundary treatments; h) the provision of appropriate amenity space; and i) accessibility. |
|---|--|



Promoting good design

- 24.4 The Council is committed to design excellence and a key strategic objective of the borough is to promote high quality, sustainable design. This is not just about the aesthetic appearance of the environment, but also about enabling an improved quality of life, equality of opportunity and economic growth. We will therefore apply policy DP24 to ensure that all developments throughout the borough, including alterations and extensions to existing buildings, are of the highest standard of design. In accordance with government guidance in Planning Policy Statement (PPS) 1 – *Delivering Sustainable Development* we will not accept design that is inappropriate to its context or which fails to take opportunities to improve the character and quality of an area and the way that it is used by residents and visitors.
- 24.5 Camden is a densely built-up borough where most development involves the replacement, extension or conversion of existing buildings. Design should respond creatively to its site and its context. This concerns both smaller-scale alterations and extensions and larger developments, the design and layout of which should take into account the pattern and size of blocks, open spaces, gardens and streets in the surrounding area (the ‘urban grain’).
- 24.6 The Council seeks to encourage outstanding architecture and design, both in contemporary and more traditional styles. Innovative design can greatly enhance the built environment and, unless a scheme is within an area of homogenous architectural style that is important to retain, high quality contemporary design will be welcomed. When assessing design, we will take into account government/CABE guidance *By Design – Urban Design in the planning system: towards better practice* and our own Camden Planning Guidance supplementary document.
- 24.7 Development should consider:
- the character and constraints of its site;
 - the prevailing pattern, density and scale of surrounding development;
 - the impact on existing rhythms, symmetries and uniformities in the townscape;
 - the compatibility of materials, their quality, texture, tone and colour;
 - the composition of elevations;
 - the suitability of the proposed design to its intended use;
 - its contribution to public realm, and its impact on views and vistas; and
 - the wider historic environment and buildings, spaces and features of local historic value.
- 24.8 Buildings should be designed to be as sustainable as possible. Environmental design and construction measures are set out in Policy DP22 – *Promoting sustainable design and construction*. Sustainable development also embraces principles of social sustainability which can be addressed by new development which:
- provides comfortable, safe, healthy and accessible space for its users;
 - is fit for purpose and can accommodate future flexibility of use;
 - provides a mix of uses and types of accommodation and provides for a range of needs within the community; and
 - provides sufficient amenity space for the promotion of health and wellbeing.



- 24.9 The re-use of existing buildings preserves the 'embodied' energy expended in their original construction, minimises construction waste and reduces the use of new materials. Many historic buildings display qualities that are environmentally sustainable and have directly contributed to their survival, for example the use of durable, natural, locally sourced materials, 'soft' construction methods, good room proportions, natural light and ventilation and ease of alteration. The retention and adaptation of existing buildings will be encouraged.
- 24.10 Due to the dense nature of Camden with extensive range and coverage of heritage assets, such as conservation areas, numerous listed buildings and five strategic views and two background views crossing the borough, the Council does not consider that it is practical to identify broad areas either suitable, or not suitable, for tall buildings. In the borough, a site may be suitable for a tall building while adjacent sites are not, due to impact on either views, conservations areas or listed buildings. Indeed, in some cases, suitability for a tall building differs across a single site. Given Camden's strategic environmental characteristics, the entire borough is considered as being within the 'sensitive' category, as defined by the English Heritage/CABE Guidance on Tall Buildings (2007). Tall building proposals in Camden will therefore merit detailed design assessments. As part of the revision of the Camden Planning Guidance SPD further clarity will be provided on tall buildings and design issues in Camden.

Respecting local character

- 24.11 Given the highly built-up nature of Camden, careful consideration of the characteristics of a site, features of local distinctiveness, and the wider context is needed in order to achieve high quality development which integrates into its surroundings.
- 24.12 In order to best preserve and enhance the positive elements of local character within the borough, we need to recognise and understand the factors that create it. Designs for new buildings, and alterations and extensions, should respect the character and appearance of the local area and neighbouring buildings. Within areas of distinctive character, development should reinforce those elements which create the character. Where townscape is particularly uniform attention should be paid to responding closely to the prevailing scale, form and proportions and materials. In areas of low quality or where no pattern prevails, development should improve the quality of an area and give a stronger identity.
- 24.13 Development should not undermine any existing uniformity of a street or ignore patterns or groupings of buildings. Overly large extensions can disfigure a building and upset its proportions. Extensions should therefore be subordinate to the original building in terms of scale and situation unless, exceptionally, it is demonstrated that this is not appropriate given the specific circumstances of the building. Past alterations or extensions to surrounding properties should not necessarily be regarded as a precedent for subsequent proposals for alterations and extensions.
- 24.13 Design and Access statements should include an assessment of local context and character, and set out how the development has been informed by, and responds to it. We have prepared a series of Conservation Area Statements, Appraisals and Management Plans which describe the character and appearance of individual conservation areas and set out how the Council considers each can be conserved and enhanced. These should be used by developers to inform their understanding of the special character of the area, and we will take these into account when assessing development proposals in conservation areas. Development Policy DP25 – *Conserving Camden's heritage* provides further guidance on the preservation and enhancement of the historic environment.

Detailing and materials

- 24.15 Architectural detailing should be carefully integrated into a building. In new development, detailing should be carefully considered so that it conveys quality of design and creates an attractive and interesting building. Architectural features on existing buildings, such as cornices, mouldings, architraves, porches and chimneys should be retained wherever possible, as their loss can harm a building by eroding its detailing. The insensitive replacement of windows and doors and the cladding and painting of masonry can also spoil the appearance of buildings and can be particularly damaging if the building forms part of a uniform group.
- 24.16 Schemes should incorporate materials of an appropriately high quality. The durability and visual attractiveness of materials will be carefully considered along with their texture, colour and compatibility with existing materials. Alterations and extensions should be carried out in materials that match the original or neighbouring buildings, or, where appropriate, in materials that complement or enhance a building or area.

Contributing to the street frontage

- 24.17 Buildings should be visually interesting at street level, with entrances and windows used to create active frontages, which allow overlooking of public areas, provide a sense of vitality and contribute to making Camden a safer place (see Core Strategy policy CS17). Ground floors should be occupied by active uses and should not turn their back on streets and other public spaces.

Incorporating building services equipment

- 24.18 Building services equipment, such as air cooling, heating, ventilation and extraction systems, lift and mechanical equipment, as well as fire escapes, ancillary plant and ducting should be contained within the envelope of a building or be located in a visually inconspicuous position.

Responding to natural features

- 24.19 New developments should respond to the natural assets of a site and its surroundings, such as slopes and height differences, trees and other vegetation. Extensions and new developments should not cause the loss of any existing natural habitats, including private gardens. Core Strategy policy CS15 – *Protecting and improving our parks and open spaces and encouraging biodiversity* provides further guidance on nature conservation in Camden and the Council's strategy for trees.
- 24.20 Development within rear gardens and other undeveloped areas can often have a significant impact upon the amenity and character of an area. Gardens help shape their local area, provide a setting for buildings and can be important visually. Therefore they can be an important element in the character and identity of an area (its 'sense of place'). We will resist development that occupies an excessive part of a garden, and where there is a loss of garden space which contributes to the character of the townscape.
- 24.21 Development will not be permitted which fails to preserve or is likely to damage trees on a site which make a significant contribution to the character and amenity of an area. Where appropriate the Council will seek to ensure that developments make adequate provision for the planting and growth to maturity of large trees.





Incorporating Landscaping

24.22 As with buildings, consideration of context is essential in the design of new hard and soft landscaping. Hard landscape elements (surfaces, boundary treatments etc), and the materials from which they are made, play a significant role in defining the character and attractiveness of a site or area and reinforcing local distinctiveness. New planting can contribute to the attractiveness of a development, soften and balance the impact of buildings and contribute to the biodiversity value of a site. Effective maintenance is often essential to the success of soft landscaping (shrubs, grass etc) and, where appropriate, the Council will expect planting plans to be accompanied by a maintenance schedule. New hard and soft landscaping should be of high quality and should positively respond to its local character.

Providing amenity space

24.23 Private outdoor amenity space can add significantly to resident's quality of life and applicants are therefore encouraged to explore all options for the provision of new private outdoor space. Gardens, balconies and roof terraces are greatly valued and can be especially important for families. However, the densely built up nature of the borough means that the provision of private amenity space can be challenging, and the Council will require that the residential amenity of neighbours be preserved, in accordance with policy DP26 – *Managing the impact of development on occupiers and neighbours* and Core Strategy policy CS5 – *Managing the impact of growth and development*.

Accessibility

24.24 In line with policy DP29 – *Improving access* the Council will expect all buildings and places to meet the highest practicable standards of access and inclusion. Any adaptation of existing buildings must therefore address this issue and respond to access needs whilst ensuring that alterations are sympathetic to the building's character and appearance. Policy DP25 – *Conserving Camden's heritage* provides further guidance on providing access to listed buildings.

Key evidence and references

- By Design: Urban Design in the Planning System – Towards Better Practice; DETR/CABE; 2000
- Planning Policy Statement (PPS) 1 – Delivering Sustainable Development, 2005
- Planning Policy Statement (PPS) 12 – Local Spatial Planning, 2008
- Making design policy work, CABE; 2005
- The London Plan (consolidated with alterations since 2004); Mayor of London; 2008
- Building in Context, CABE/English Heritage, 2002
- Tree and Woodland Framework for London, Mayor of London, 2005

DP26. Managing the impact of development on occupiers and neighbours

- 26.1 Camden's Core Strategy seeks to sustainably manage growth so that it takes place in the most appropriate locations and meets our needs while continuing to conserve and enhance the features that make Camden such an attractive place to live, work and visit (see policy CS1). Promoting and protecting high standards of amenity is a key element in this and will be a major consideration when the Council assesses development proposals. Core Strategy policies CS5 – *Managing the impact of growth and development* and CS14 – *Promoting high quality places and conserving our heritage* set out our overall approach to protecting the amenity of Camden's residents, workers and visitors, a major factor in people's quality of life. Policy DP26 contributes to the implementation of the Core Strategy by making sure that the impact of a development on occupiers and neighbours is fully considered.

DP POLICY

DP26 – Managing the impact of development on occupiers and neighbours

The Council will protect the quality of life of occupiers and neighbours by only granting permission for development that does not cause harm to amenity. The factors we will consider include:

- a) visual privacy and overlooking;
- b) overshadowing and outlook;
- c) sunlight, daylight and artificial light levels;
- d) noise and vibration levels;
- e) odour, fumes and dust;
- f) microclimate;
- g) the inclusion of appropriate attenuation measures.

We will also require developments to provide:

- h) an acceptable standard of accommodation in terms of internal arrangements, dwelling and room sizes and amenity space;
- i) facilities for the storage, recycling and disposal of waste;
- j) facilities for bicycle storage; and
- k) outdoor space for private or communal amenity space, wherever practical.

- 26.2 Development should avoid harmful effects on the amenity of existing and future occupiers and to nearby properties. When assessing proposals the Council will take account the considerations set out in policy DP26. The Council's Camden Planning Guidance supplementary document contains detailed guidance on the elements of amenity.

Visual privacy, overlooking, overshadowing, outlook, sunlight and daylight

- 26.3 A development's impact on visual privacy, overlooking, overshadowing, outlook, access to daylight and sunlight and disturbance from artificial light can be influenced by its design and layout, the distance between properties, the vertical levels of onlookers or occupiers and the angle of views. These issues will also affect the amenity of the new occupiers. We will expect that these elements are considered at the design stage of a scheme to prevent potential negative impacts of the development on occupiers and neighbours. To assess whether acceptable levels of daylight and sunlight are available to habitable spaces, the Council will take into account the standards recommended in the British Research Establishment's *Site Layout Planning for Daylight and Sunlight – A Guide to Good Practice (1991)*.

Artificial lighting levels

- 26.4 Lighting creates a sense of safety and can enable activities in the evenings and at night. It can be used to highlight landmark buildings and add vitality to our streets. Lighting can increase the potential for natural surveillance and, where used correctly, can reduce the opportunity for criminal activity and increase the likelihood of it being challenged and/or reported. However, poorly designed internal and external lighting or lighting that operates for an excessive period of time is a form of pollution that can harm the quality of life for those living nearby, affect wildlife and waste energy. Camden's dense character means that light pollution can be a bigger problem in the borough than in lower density areas where uses are not so close together. For example, lighting from conservatories can affect neighbours living above, as well as to the sides and rear, and the lighting of advertisements can affect people living nearby. Glare and light spillage from poorly designed lighting can make it less easy to see things at night and effect wildlife as well as people. Lighting should only illuminate the intended area and not affect or impact on its surroundings. Schemes involving floodlighting and developments in sensitive areas, such as adjacent to sites of nature conservation importance, should employ a specialist lighting engineer accredited by the Institute of Lighting Engineers to ensure that artificial lighting causes minimal disturbance to occupiers and wildlife. For further details on lighting and occupiers and biodiversity please see our Camden Planning Guidance supplementary document.

Noise and vibration

- 26.5 Noise/vibration pollution has a major effect on amenity and health and can be a particularly significant issue in Camden given the borough's dense urban nature. More detail on how to prevent disturbance from noise and vibration, including the requirement for mitigation measures can be found in policy DP28.

Odours, fumes and dust

- 26.6 Camden suffers from extremely poor air quality which has a harmful impact on health and the environment. More detail on how the Council is tackling poor air quality can be found in policy DP32. Camden Planning Guidance provides information on how developments should be designed to prevent occupants from being exposed to air pollution, including mitigation measures.





26.7 Odours, fumes and dust can be generated from commercial cooking, industrial process and construction and demolition. We will require all development likely to generate odours to prevent them from being a nuisance by installing appropriate extraction equipment and other mitigation measures. Further details on mitigation measures and where extraction equipment should be located can be found in Camden Planning Guidance. Further details on limiting noise from extraction equipment can be found in DP28. The Council will limit the disturbance from dust due to construction and demolition by expecting developers and their contractors to follow the London Councils' Best Practise Guidance *The control of dust and emissions from construction and demolition*. We will also expect developers to sign up to the Considerate Constructors Scheme. Details of how these will be implemented should be provided in a Construction Management Plan. Please see below for further details on Construction Management Plans.

Microclimate

26.8 Developments, especially when large, can alter the local climate. For example, a light coloured building that reflects heat will stay cool on the inside and the outside, whereas a dark building will absorb heat during the day to raise internal temperatures and slowly release this heat as the temperature cools, keeping the local air temperature warmer. Buildings can also affect the flow of air and cause wind tunnels. All developments should consider local topography and the local microclimate in their design. Developments large enough to alter the local climate will be required to submit a statement demonstrating how the design has considered local conditions. Detail of what is expected in such a statement can be found in the Camden Planning Guidance.

Attenuation measures and Construction Management Plans

26.9 Most potential negative effects of a development can be designed out or prevented through mitigation measures. For example, appropriately located and insulated extraction equipment can prevent nuisance caused by strong odours and fumes. An air tight building with mechanical ventilation and good insulation can make living adjacent to railways and busy roads acceptable with regards to noise, vibration and internal air quality. We will require any attenuation measures to be identified prior to planning permission being granted and secured for the lifetime of the development.

26.10 Disturbance from development can also occur during the construction phase. Measures required to reduce the impact of demolition, excavation and construction works must be outlined in a Construction Management Plan. We will require Construction Management Plans to identify the potential impacts of the construction phase of the development and state how any potential negative impacts will be mitigated. Construction Management Plans may be sought for:

- major developments;
- basement developments;
- developments involving listed buildings or adjacent to listed buildings;
- developments that could affect wildlife;
- developments on sites with poor or limited access; and
- developments that could cause significant disturbance due to their location or the anticipated length of the, demolition, excavation or construction period.

For further details on construction management plans please refer to our Camden Planning Guidance supplementary. Please see policy DP27 for more on our approach to basements.

Standards of accommodation

26.11 The size of a dwelling and its rooms, as well as its layout, will have an impact on the amenity of its occupiers. Residential standards and guidance are contained in our Camden Planning Guidance supplementary document. Policy DP6 outlines our approach to Lifetime Homes and further detail can be found in Camden Planning Guidance. Details on our approach to providing facilities for waste and for bicycle storage can also be found in Camden Planning Guidance. Details on our requirements for the provision of cycle parking can be found in DP18 – *Parking standards and limiting the availability of car parking*.

26.12 Outdoor amenity space provides an important resource for residents, which is particularly important in Camden given the borough's dense urban environment. It can include private provision such as gardens, courtyards and balconies, as well as communal gardens and roof terraces. The Council will expect the provision of gardens in appropriate developments, and particularly in schemes providing larger homes suitable for families. However, we recognise that in many parts of the borough this will not be realistic or appropriate. In these locations, the provision of alternative outdoor amenity space, for example, balconies, roof gardens or communal space will be expected. These amenity spaces should be designed to limit noise and disturbance of other occupiers and so not to unacceptably reduce the privacy of other occupiers and neighbours.

Key evidence and references

- Air Quality Action Plan 2009-13
- Camden's Noise Strategy, 2002
- Planning Policy Guidance (PPG) 24: Planning and Noise
- The London Plan (consolidated with alterations since 2004); Mayor of London; 2008
- Cleaning London's Air: The Mayor's Air Quality Strategy (2002)
- Souder City – The Mayor's Ambient Noise Strategy; Mayor of London; 2004
- Institution of Lighting Engineers web-site, <http://www.ile.org.uk>