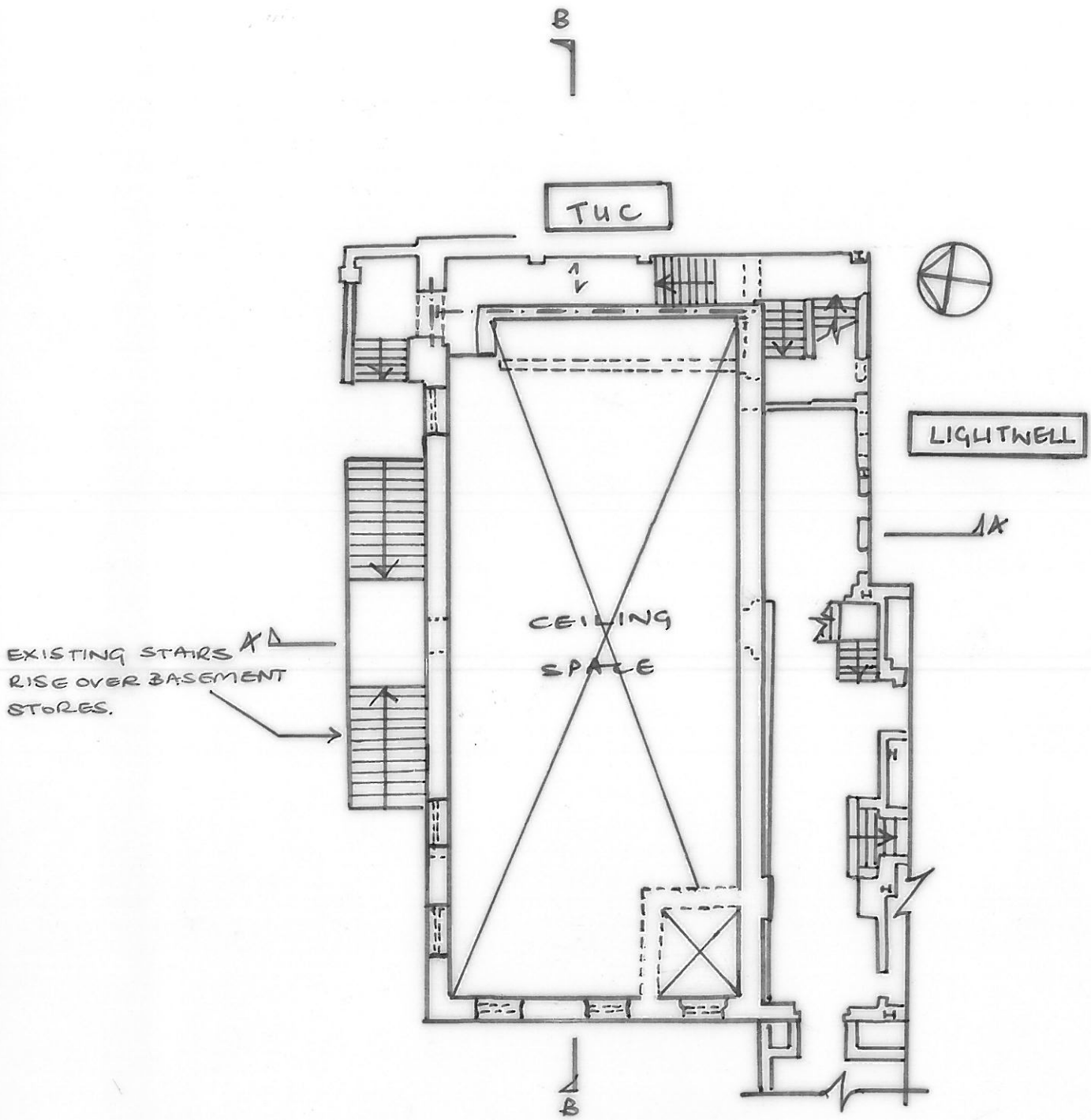


FOR NOTES REFER TO ABA
DRAWING 1721/30/111.



PART PLAN AT STREET LEVEL
(~1:200)

-	18/8/16	ISSUED FOR INFORMATION	AM
---	---------	------------------------	----

date AUG '16	drawn AM	checked TB	scale (original - A4) 1:200	Alan Baxter 75 Cowcross Street London EC1M 6EL tel 020 7250 1555 email aba@alanbaxter.co.uk www.alanbaxter.co.uk
job THE BLOOMSBURY HOTEL	dwg. EXISTING STRUCTURE PART PLAN - TAVISTOCK ROOM, STREET LEVEL	drg. no. 1721/30/112	rev. -	