

EXISTING PARTITION,
SHOWN INDICATIVELY &
ASSUMED NONSTRUCTURAL

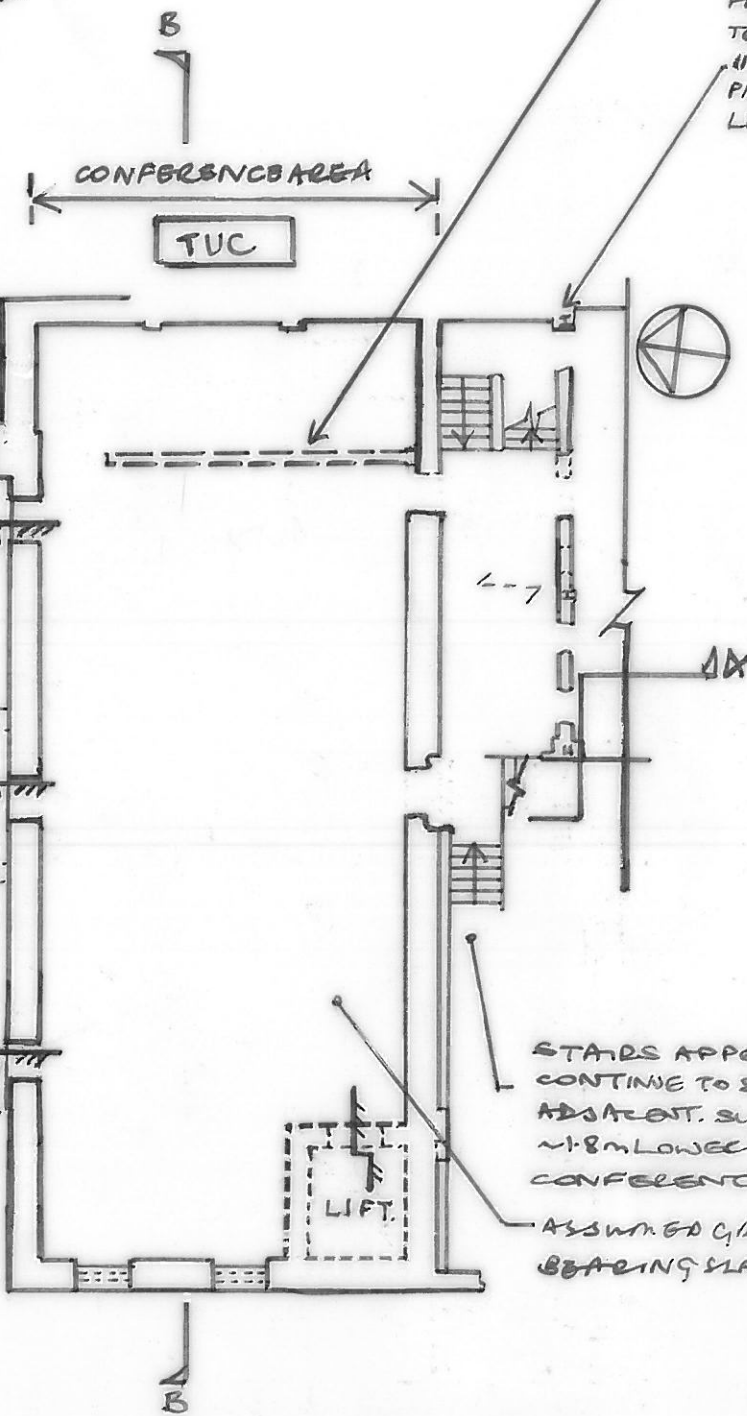
ASSUMED STEEL
FRAME APPEARS TO
TRANSFER LOADS
INTO MASONRY
PIERS AT BASEMENT
LEVEL.

NOTES:

1. THIS DRAWING IS TO BE READ IN CONJUNCTION WITH ALL RELEVANT ARCHITECT'S & ENGINEER'S DRAWINGS.
2. DO NOT SCALE FROM THIS DRAWING.
3. THE INFORMATION ON THIS DRAWING HAS BEEN BASED ON:
 - ABA SITE VISIT, AUG 2016.
 - LONDON BOROUGH OF CAMDEN PLANNING APPLICATION FORM PL/9501711, SEPT 1995
 - LONDON BOROUGH OF CAMDEN PLANNING APPLICATION FORM PSX 0204 063, JAN 2001
 - ARCHITECT'S JOURNAL ARTICLE: 'MODERNISING MODERNISM', J DUNNETT, APRIL 1990.
 AND HAS NOT BEEN CONFIRMED USING OPENING UP WORKS.

ASSUMED EXTENT OF PAYEMENT VAULTS.

EXISTING STORES



STAIRS APPEAR TO CONTINUE TO SUBBASEMENT ABOVE. SUBBASEMENT ~1.8m LOWER THAN THE CONFERENCE AREA.

ASSUMED C/20 MPA BEARING SLAB.

PART PLAN AT CONFERENCE LEVEL
(~1:200)

-	19/8/16	ISSUED FOR INFORMATION	AM
---	---------	------------------------	----

date Aug '16	drawn AM	checked TB	scale (original - A4) 1:200	Alan Baxter 75 Cowcross Street London EC1M 6EL tel 020 7250 1555 email aba@alanbaxter.co.uk www.alanbaxter.co.uk
job THE BLOOMSBURY HOTEL	dwg. EXISTING STRUCTURE PART PLAN - TAVISTOCK ROOM, CONFERENCE LEVEL.	drg. no. 1721/30/111	rev. -	