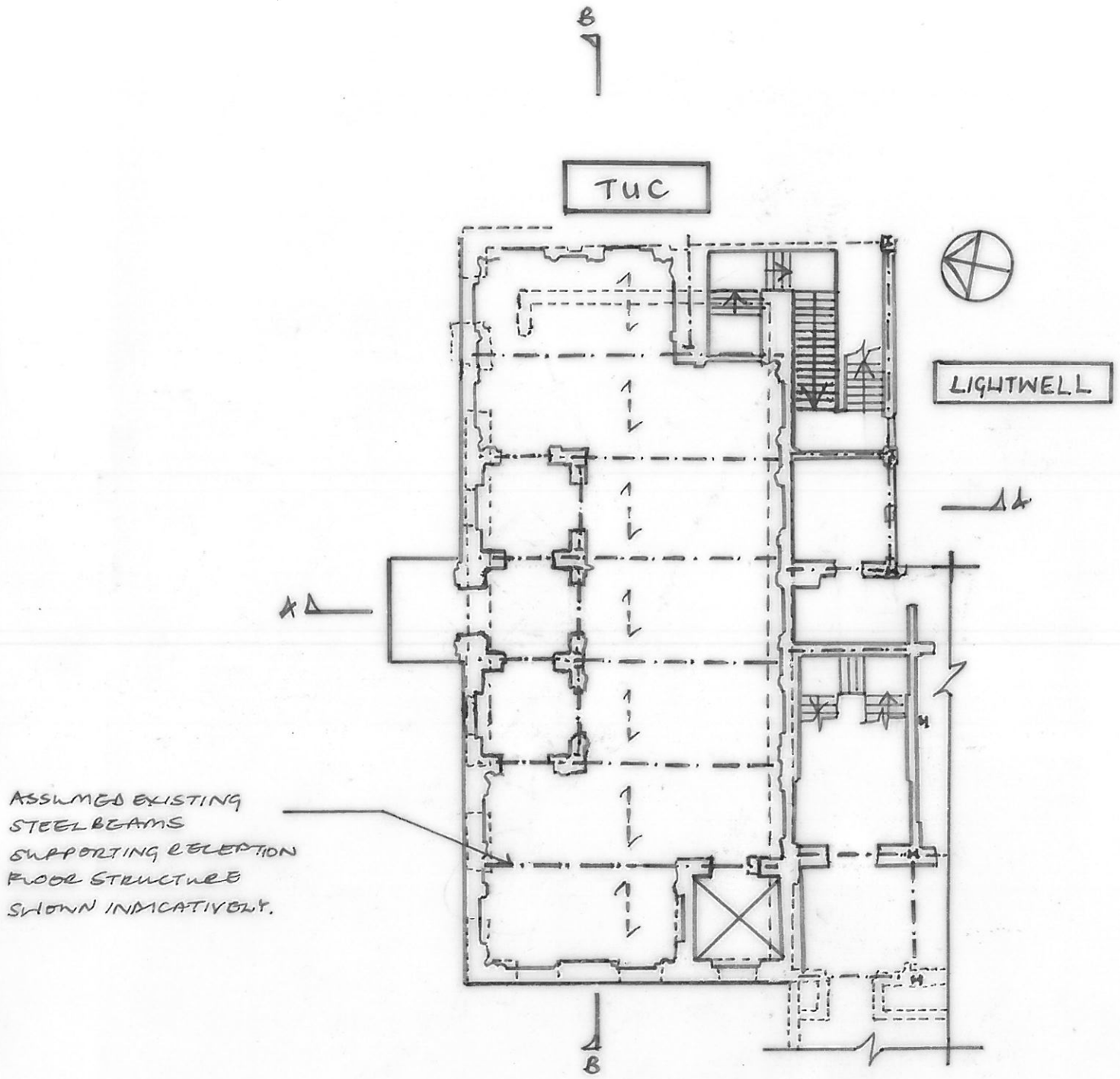


FOR NOTES REFER TO ABA
DRAWING 1721/30/111.



ASSUMED EXISTING
STEEL BEAMS
SUPPORTING RECEPTION
FLOOR STRUCTURE
SHOWN INDICATIVELY.

PART PLAN AT RECEPTION LEVEL
(~ 1:200)

- 19/8/16 ISSUED FOR INFORMATION mm

date Aug '16	drawn mm	checked TB	scale (original - A4) 1:200	Alan Baxter	
job THE BLOOMSBURY HOTEL	dwg. EXISTING STRUCTURE PART PLAN - TANSTOCK ROOM, RECEPTION LEVEL		drg. no. 1721/30/113	rev. -	75 Cowcross Street London EC1M 6EL tel 020 7250 1555 email aba@alanbaxter.co.uk www.alanbaxter.co.uk