

Our query relates to the North and South core area windows which run vertically from Level 1 to Level 33 in one continuous strip (shown on attached elevation Drawing No. (25) 025).

The continuous window strip is held and framed by the existing concrete structure either side. The below close up of the window in plan can be directly compared to the proposal.

The plan below demonstrates that the window element and flashings beside it are aligned with the face of the existing concrete and the existing concrete reveal remains visible and is shown in the attached approved drawing (Drawing No. (25) 131).



Fig 1: Window in plan

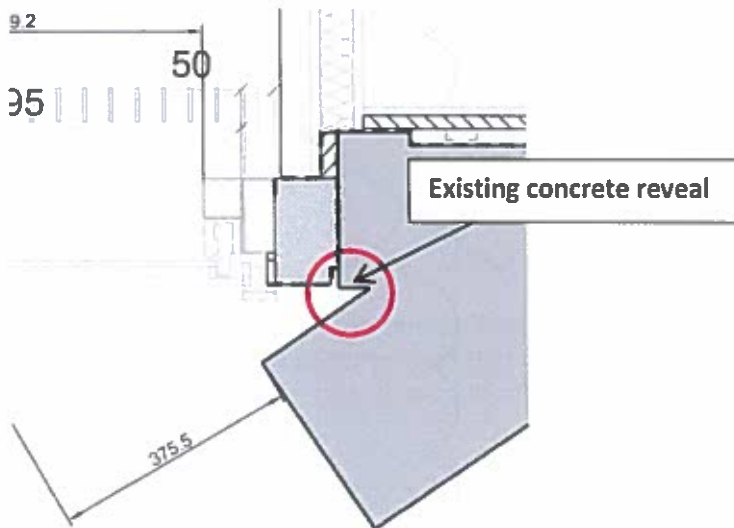


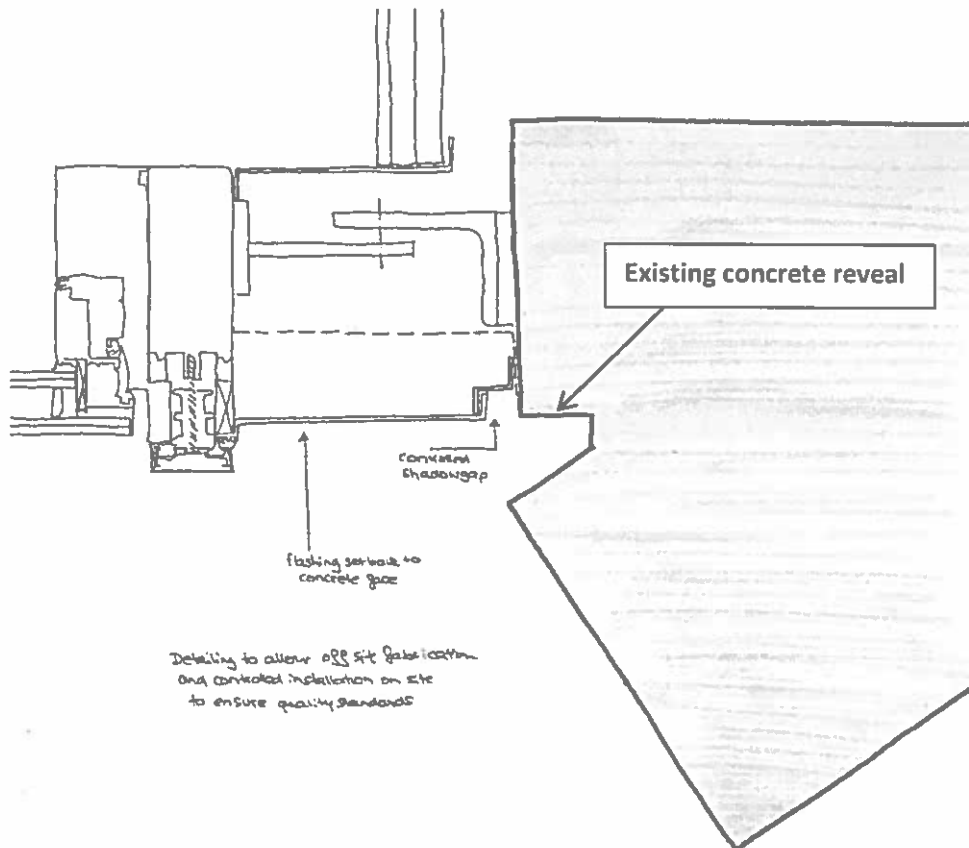
Fig 2: close up of detail in question (attached Drawing No. (25) 131)

The approved detail shown in (25) 131 cannot be achieved technically due to the variances in the concrete line and level throughout levels 1 to 33. It would not be possible to keep a uniform silicone sealant joint between the window frame and the existing concrete.

We have therefore produced the below design solution which is very similar to the approved scheme that will allow for buildable fit out of the windows.

Proposal

The variances in the concrete line and level between the floors will be overcome with the use of a controlled shadow gap, keeping a uniform visible gap throughout levels 1 to 33. This will replace the silicone joint as shown in the below detail. The existing concrete reveal will remain visible and the outside face of the window will remain aligned with the existing concrete reveal as per the approved detail.



We believe the option detailed above presents a way to deliver the windows in a way as close to the approved scheme as possible. Please can LB Camden confirm that this is acceptable. We will be issuing a listed building consent in respect of this detail following feedback from officers.