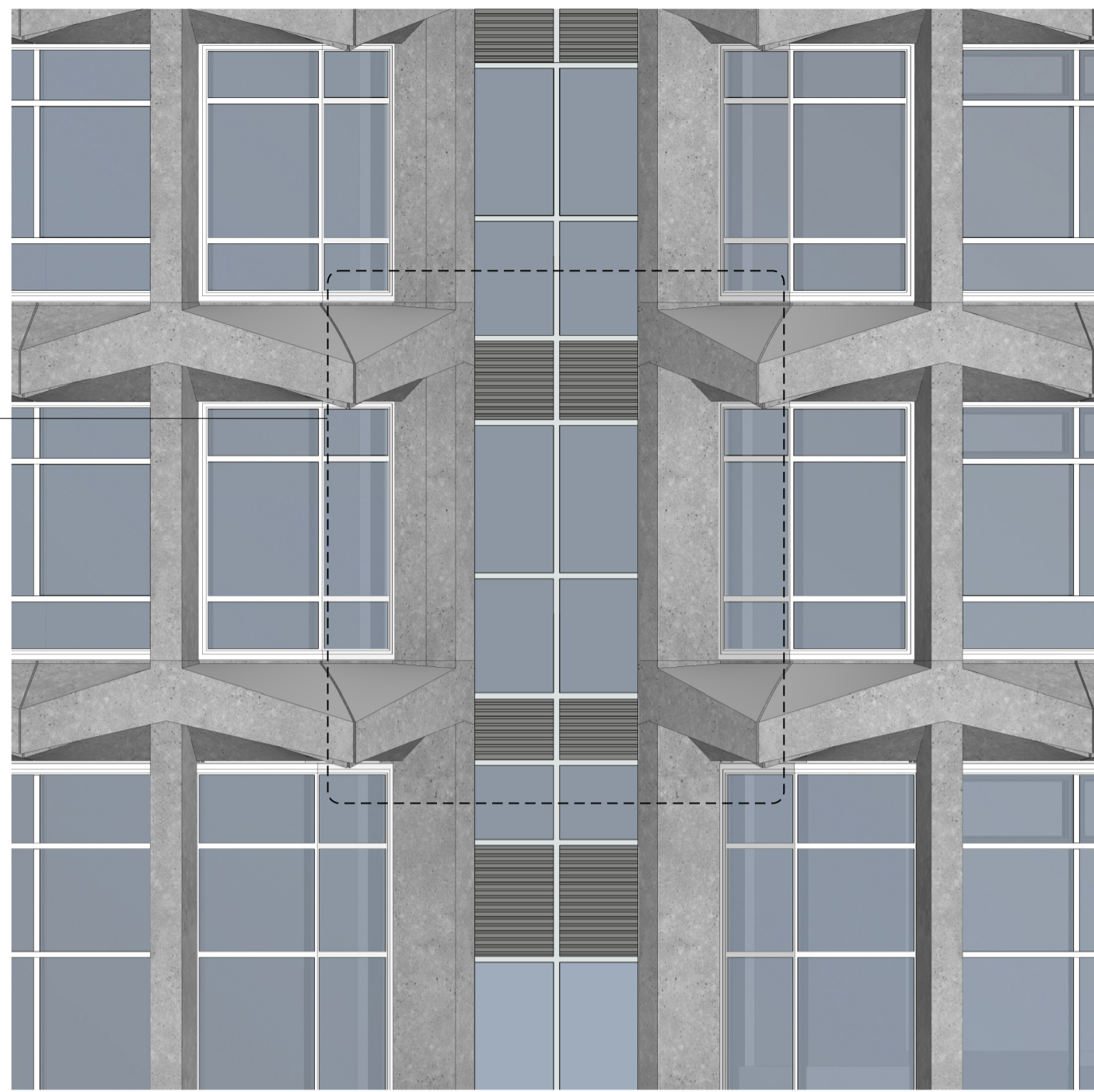
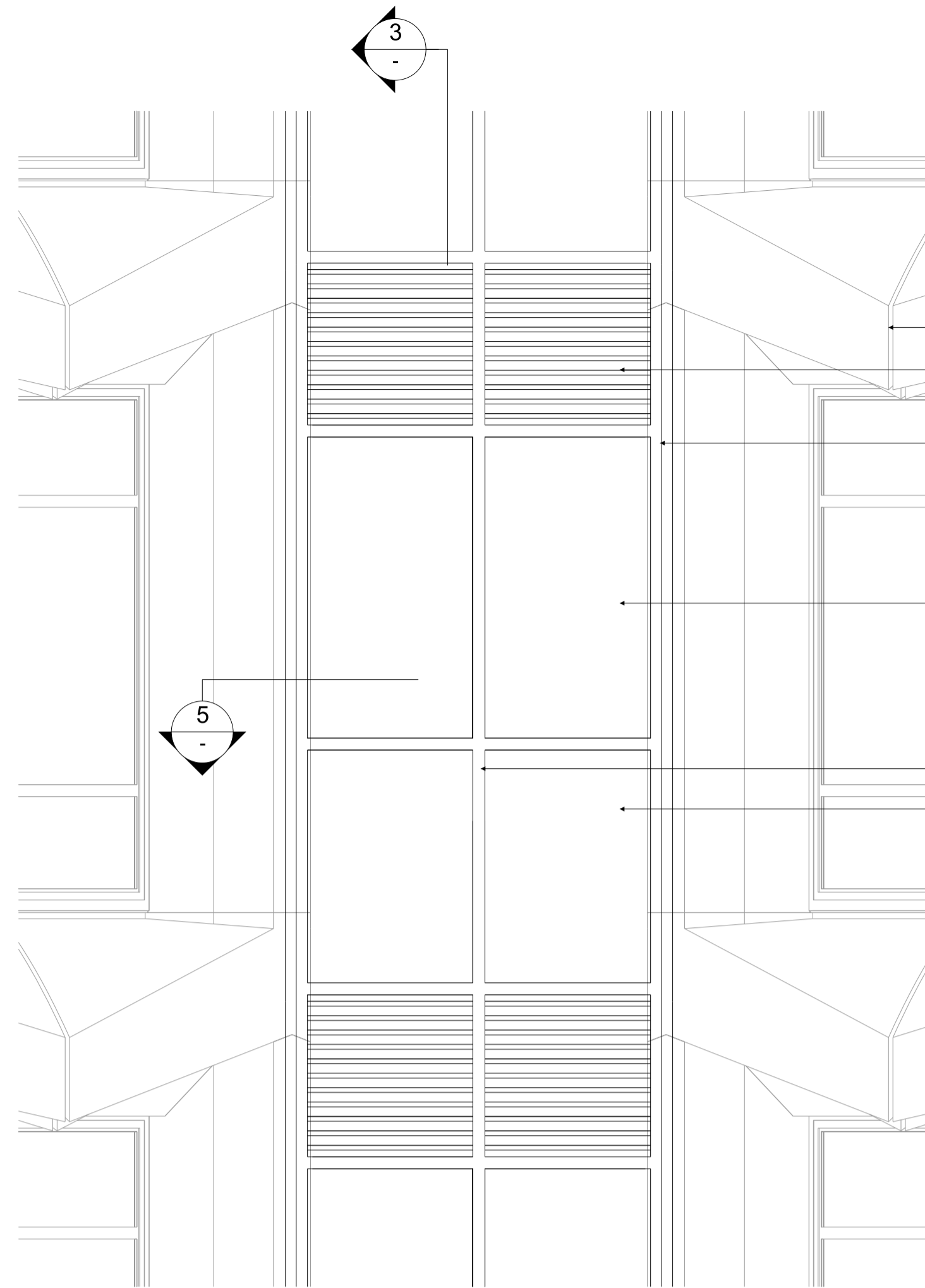


**WINDOW TYPE
WT-Q**

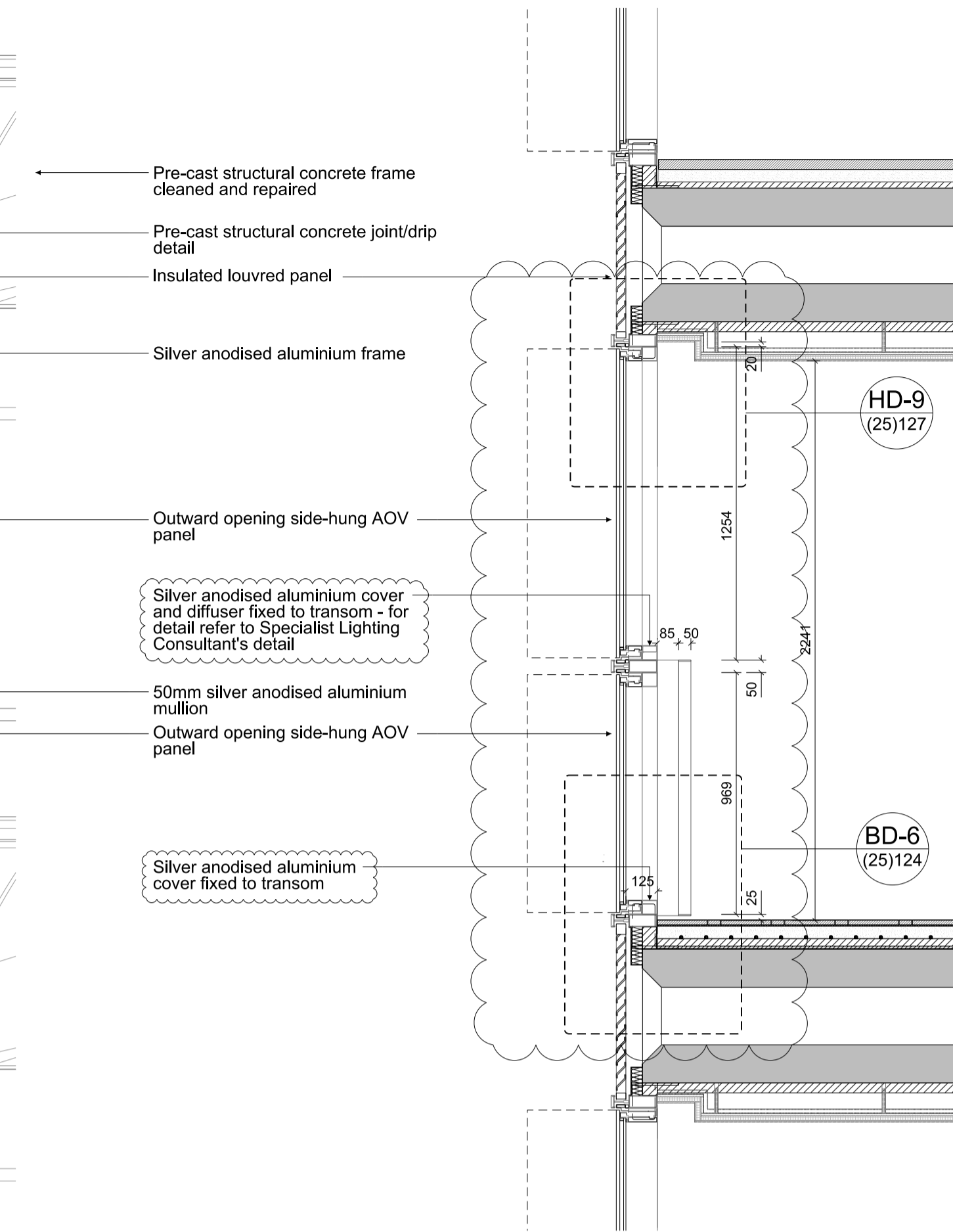
Notes
The cladding configuration shown is based on structural dimensions taken from the original design drawings. Structural dimensions are subject to confirmation by site survey.
For applicability of fritting please refer to the window schedule for each individual window number.
To be read in conjunction with Wintech's cladding specification.



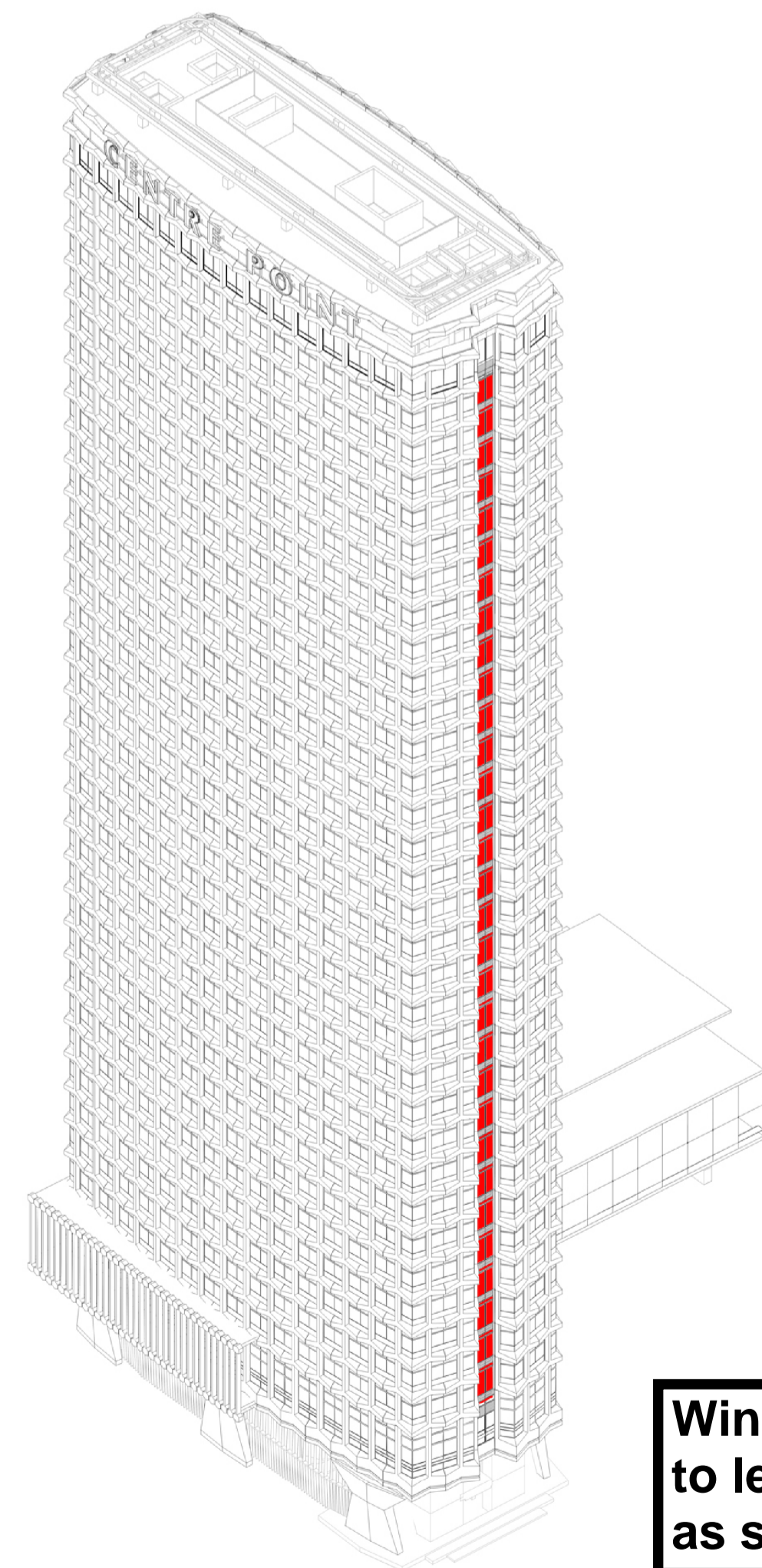
1 TYPICAL END BAY CONTEXT ELEVATION 1:50



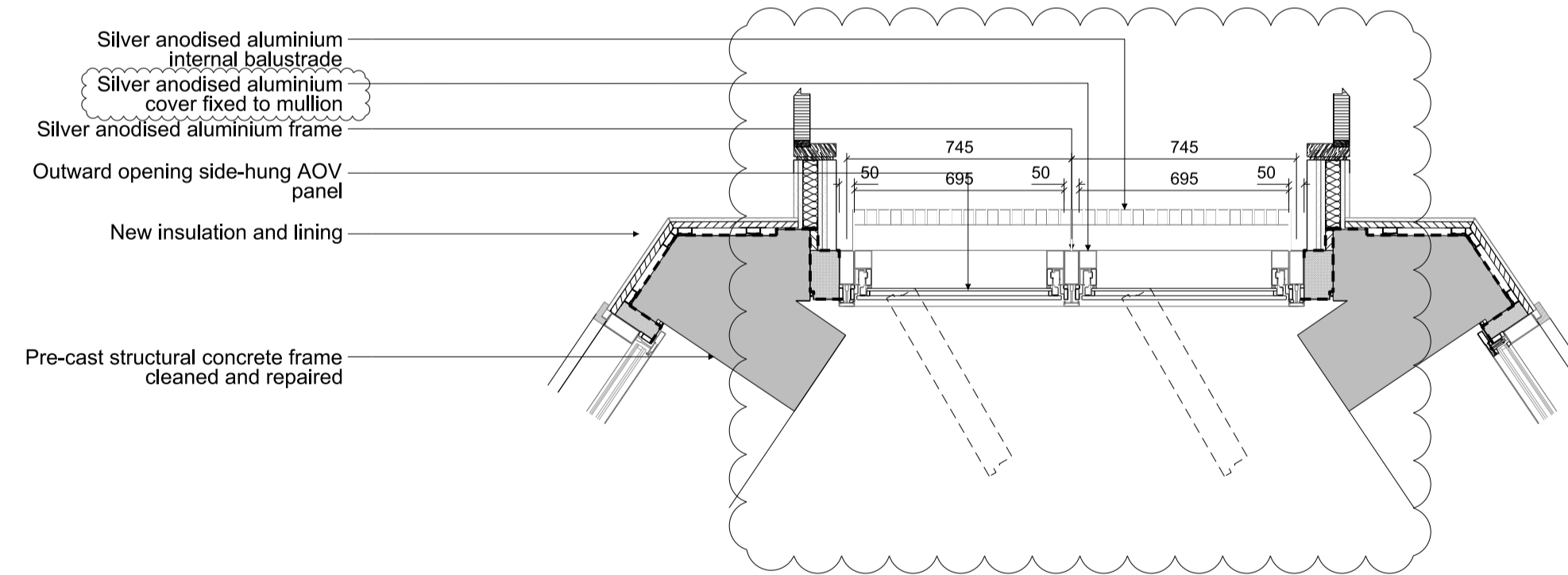
2 TYPICAL END BAY ELEVATION 1:20



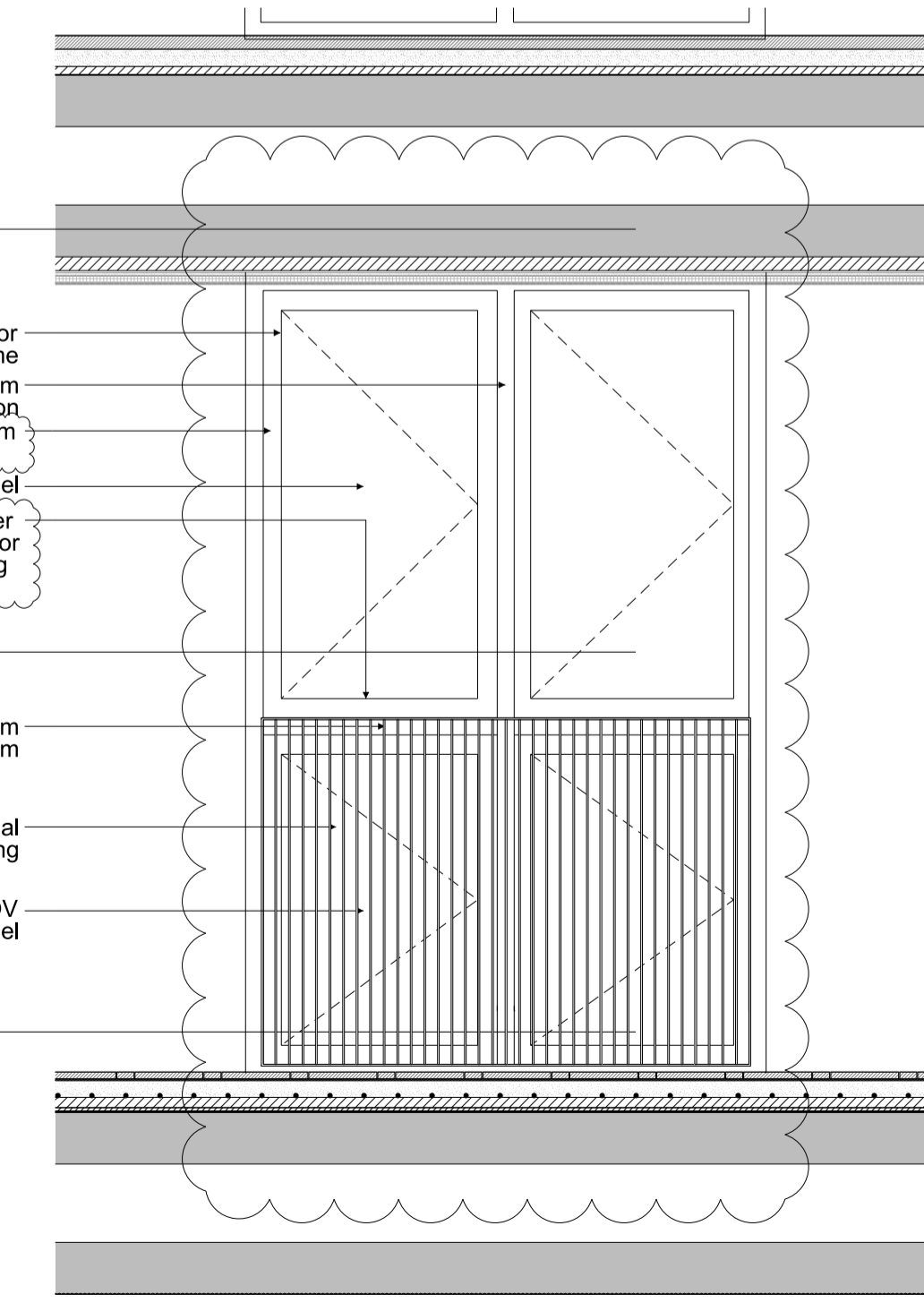
3 TYPICAL END BAY SECTION 1:20



4 LOCATION ISOMETRIC



5 TYPICAL END BAY PLAN 1:20 THROUGH AOV



7 TYPICAL END BAY INTERNAL ELEVATION 1:20

Drawing No: (25)025 Elevation showing window type in question. This window is present on the North and South Elevations of Centre Point

Window runs vertically from level 1 to level 33 in one continuous strip as shown here

F	16.12.13	Cover and diffuser added	PG	AS
E	26.09.13	Floor buildup updated	PG	AS
D	30.04.13	Smoke vent updated	AS	AS
C	04.12.12	Cladding Construction Issue	AS	AS
B	31.08.12	Stage D	AS	AS
A	01.06.12	Tender Issue	TG	AS
-	22.05.12	Draft Tender Issue	TG	AS

Rev	Date	Reason	By	Ckd
-----	------	--------	----	-----

CONRAN+ PARTNERS
Architects Designers

LONDON OFFICE
Conran Building,
22 Shad Thames,
London SE1 2YU
Telephone +44 (0) 20 7403 8899
Email cp@conran.com

Project: Centre Point
Client: Almacantar
Drawing title: WT-Q
Typical Floor End Bay
Scale 1: 50/20@A1 Date: May 2012 Drawn by: TG
Project number: 2332 Drawing No: (25)025 Rev: F
Status: CONSTRUCTION Checked by: AS