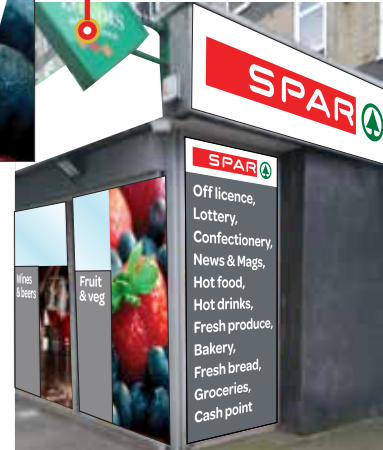




Regent's Park

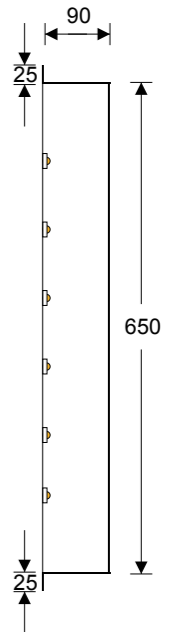


**EXISTING PROJECTION BOX NEEDS TO BE REMOVED**

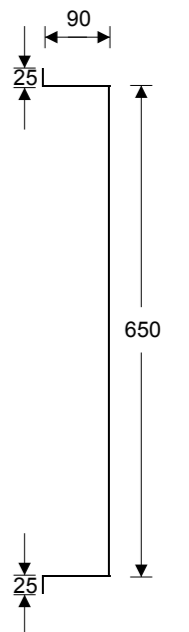




**Fascia profile @ 1:10**



**Side fascia profile @ 1:10**



**1 Spar Standard Fascia: 11200 x 700 x 90mm c/w 25mm up & downstand**  
**FASCIA:** Fabricated aluminium trays 90mm returns  
**COLOUR:** Powder coated RAL9003 60% GLOSS  
**SPEC:** Fret cut SPAR logo to face of panel, backed in opal acrylic, with translucent vinyl to face  
**LIGHTING:** White LED illumination through face of logo  
**VINYL:** Grey retailer location text to face of panel  
**UP & DOWNSTAND:** 25mm

**2 Spar Standard Fascia: 2300 x 700 x 90mm c/w 25mm up & downstand**  
**FASCIA:** Fabricated aluminium trays 90mm returns  
**COLOUR:** Powder coated RAL9003 60% GLOSS  
**LIGHTING:** None  
**VINYL:** Spar logo



**GRAPHICS TO COVER EXISTING SHELVING/RACKING**

**3 EXTERNAL WINDOW GRAPHICS**  
**SPEC:** Grey adhesive vinyl  
**GRAPHICS:** Digitally printed direct to grey adhesive vinyl c/w gloss overlamine  
**QUANTITY:** 6no.  
**SIZES:** As shown  
**FIX:** Apply direct to face of window via adhesive

**4 EXTERNAL WELCOME TOWER**  
**SPEC:** Grey adhesive vinyl  
**GRAPHICS:** Digitally printed direct to grey adhesive vinyl c/w gloss overlamine  
**SIZE:** 810 x 2300mm  
**FIX:** Apply direct to face of window via adhesive

**5 COMMODITY BOARD**  
**SPEC:** Flat ACM panel  
**GRAPHICS:** Digitally printed direct to grey adhesive vinyl c/w gloss overlamine applied to panel  
**SIZE:** 1150 x 2580mm  
**FIX:** Face fixed





All designs and specifications are copyright of Brand Consortia Ltd.  
All rights reserved.  
Reproduction of these images in whole or in part without the written consent of Brand Consortia Ltd is strictly prohibited. Any Breaches may result in legal action.

VINYL  Colour  Colour  
 Colour

RAL  Colour  Colour

Any obstructions to the signage, CCTV, Alarm boxes etc must be relocated by the retailer prior to the installation of any signage.



**Photograph's of completed works (11-03-2016)**



**SPAR**

**SPAR**

Off licence,  
Confectionery,  
News & Mags,  
Hot food,  
Hot drinks,  
Fresh produce,  
Bakery,  
Fresh bread,  
Groceries,  
Cash point

**POST OFFICE**

**SPAR**

Regent's Park

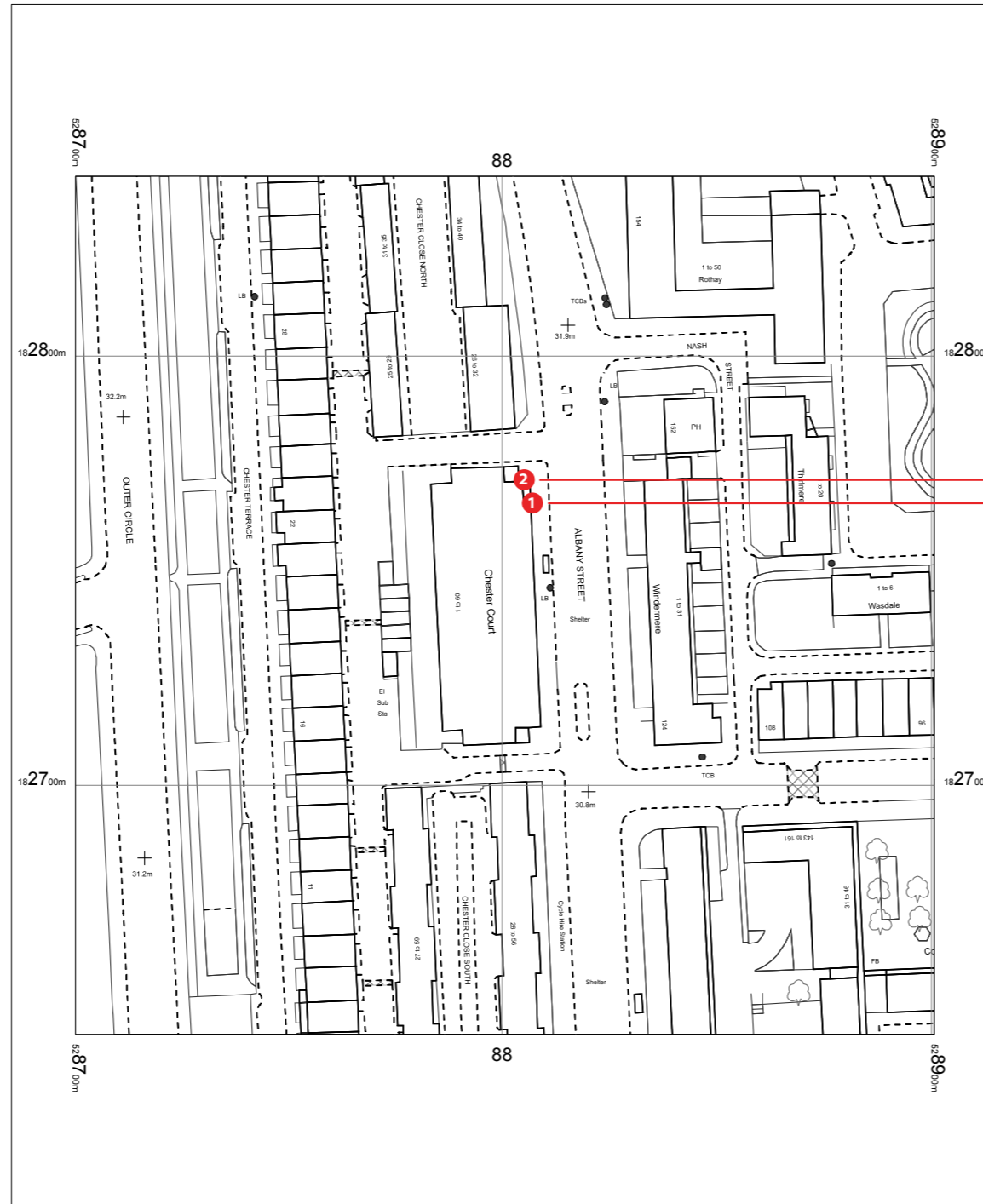
Open  
Monday - Friday  
9am - 5pm  
Saturday  
9am - 5pm

**ID PHOTOS Here**

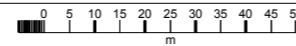
All designs and specifications are copyright of Brand Consortia Ltd. All rights reserved. Reproduction of these images in whole or in part without the written consent of Brand Consortia Ltd is strictly prohibited. Any Breaches may result in legal action.

VINYL  Colour  Colour ..... RAL  Colour  Colour

Any obstructions to the signage, CCTV, Alarm boxes etc must be relocated by the retailer prior to the installation of any signage.



SPAR SIDE FASCIA  
SPAR MAIN FASCIA



9 & 10 Chester Court  
Albany Street  
London  
NW1 4BU

OS MasterMap 1250/2500/10000 scale  
12 May 2016, ID: MDP-00527706  
www.malcolmhughes.co.uk

1:1250 scale print at A4, Centre: 528801 E, 182742 N

©Crown Copyright and database rights 2016 OS  
100019980



**MALCOLM HUGHES**  
**LAND SURVEYORS**  
Chartered Land Surveyors

Tel: 0161 926 0650

VINYL  Colour  Colour

RAL  Colour  Colour

Any obstructions to the signage, CCTV, Alarm boxes etc must be relocated by the retailer prior to the installation of any signage.