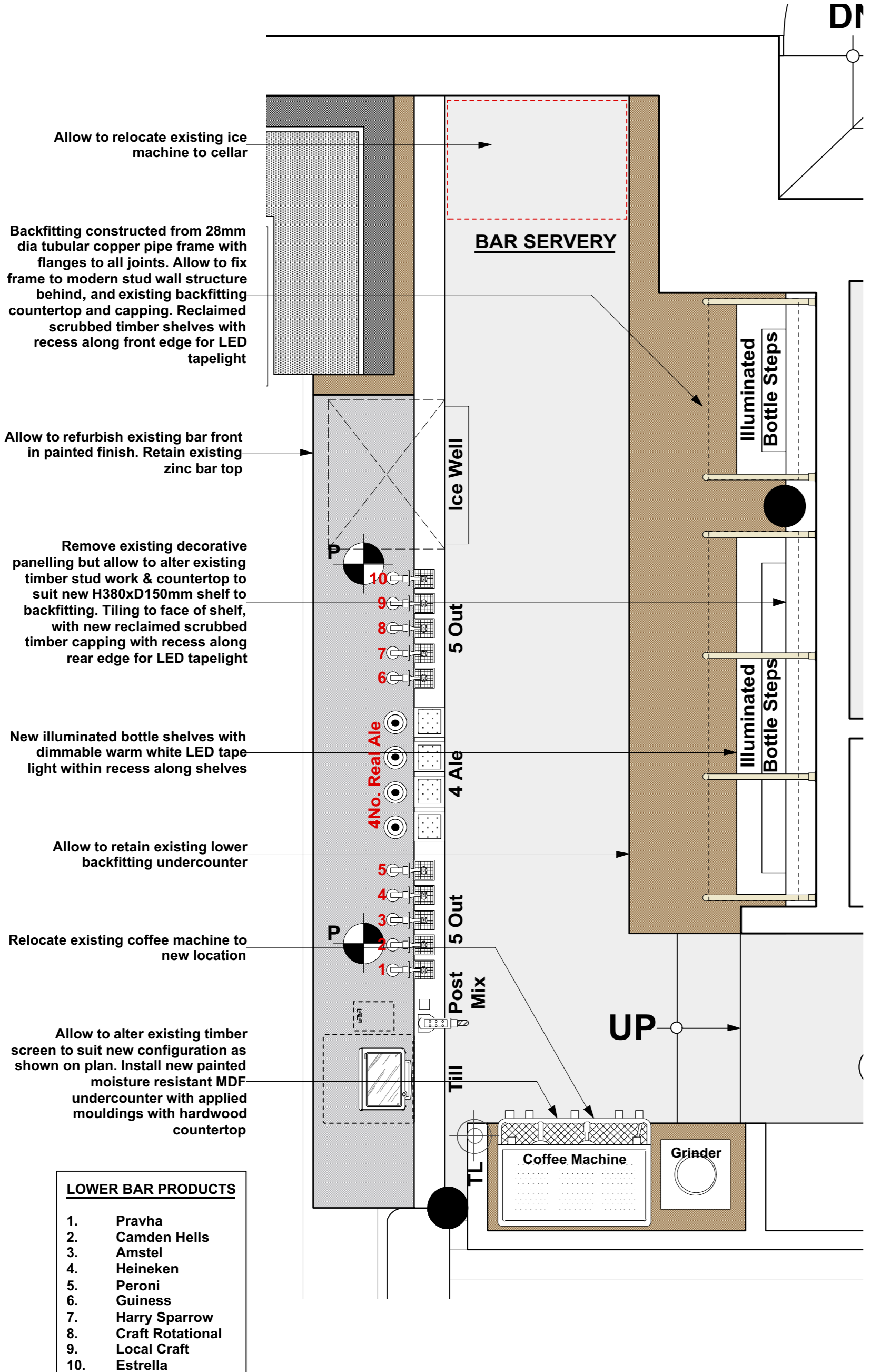


Rev 02 - 09.09.16 - OW
Plan updated to suit on site dimensions,
and general revisions made throughout

Rev 03 - 13.09.16 - OW
Lower bar products added

Rev 03 - 13.09.16 - OW
Revisions made to copper frame
following information from contractor

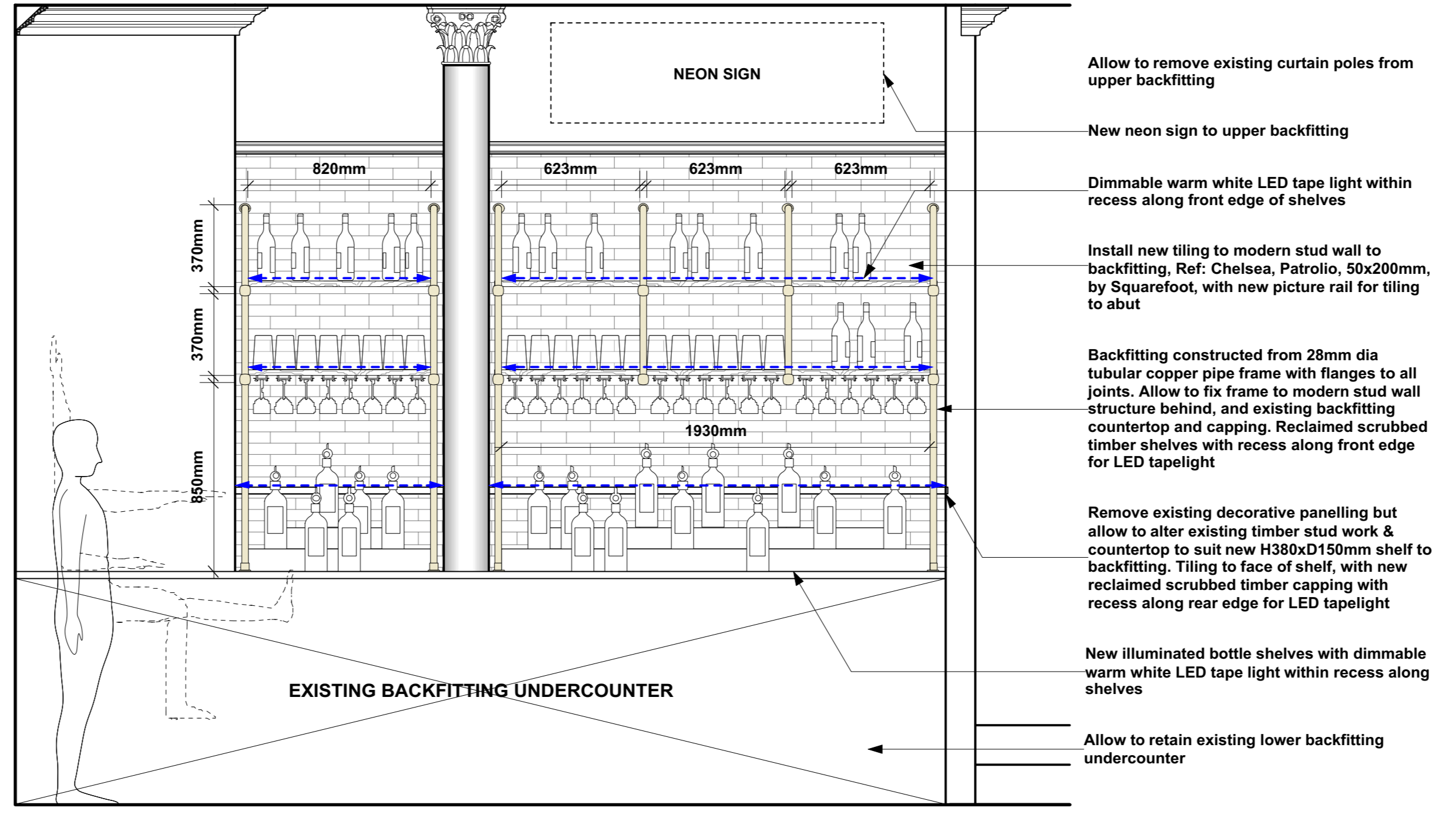
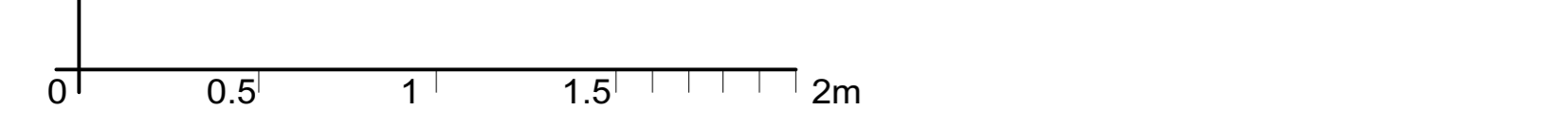
NOTES & REVISIONS :
CONTRACTORS MUST VERIFY ALL DIMENSIONS ON
SITE BEFORE COMMENCING ANY WORK. FIGURED
DIMENSIONS TO TAKE PRECEDENCE OVER SCALED
DIMENSIONS. CONTRACTORS MUST NOT SCALE
FROM THIS DRAWING UNLESS EXPRESS INSTRUCTIONS
ARE GIVEN BY SAMPSON ASSOCIATES. THE COPYRIGHT
OF THIS DRAWING IS RESERVED. THE DRAWING MUST
NOT BE DISCLOSED WITHOUT AUTHORITY.



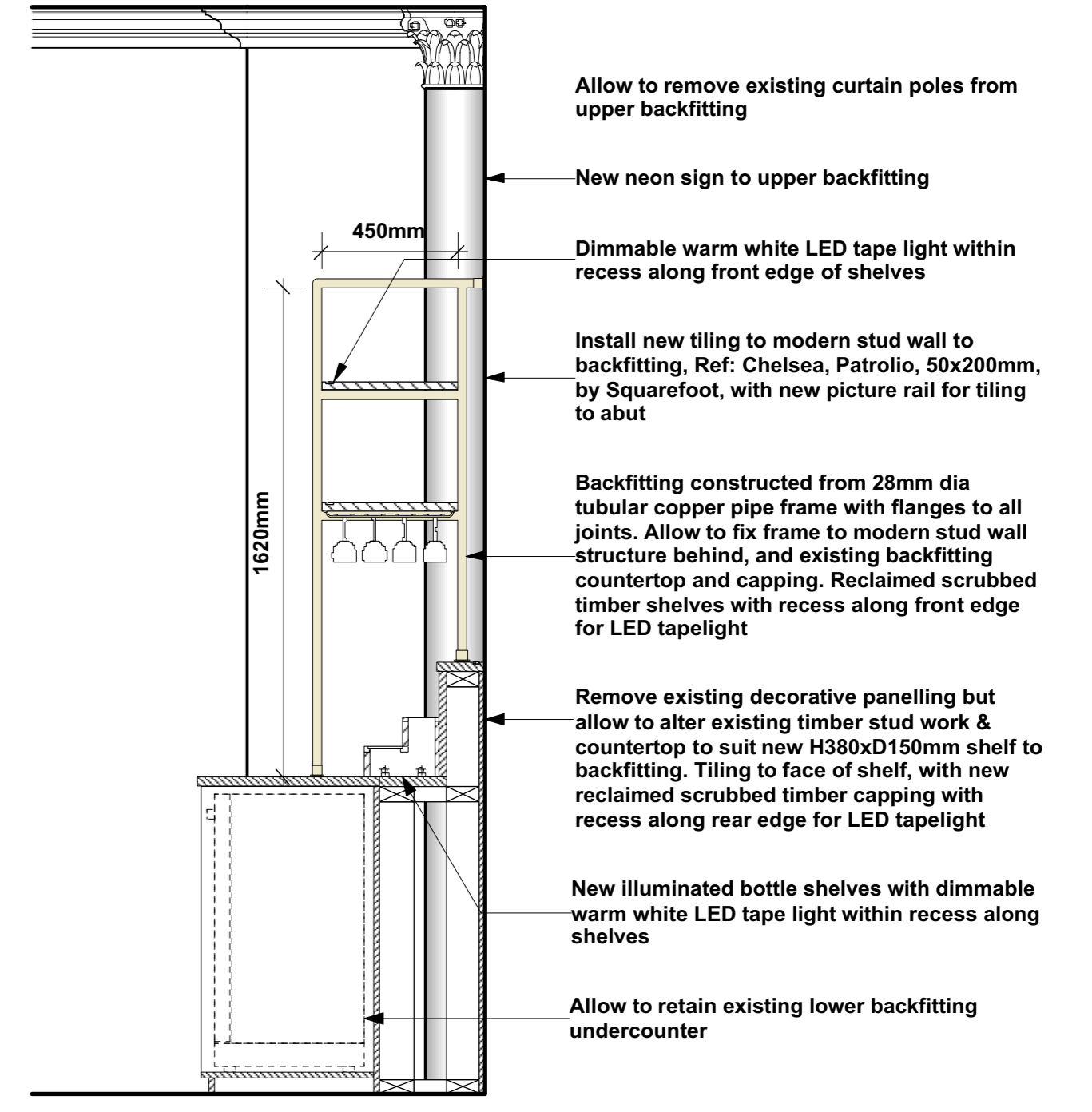
1 GROUND FLOOR LOWER BAR PLAN
Scale: 1:20



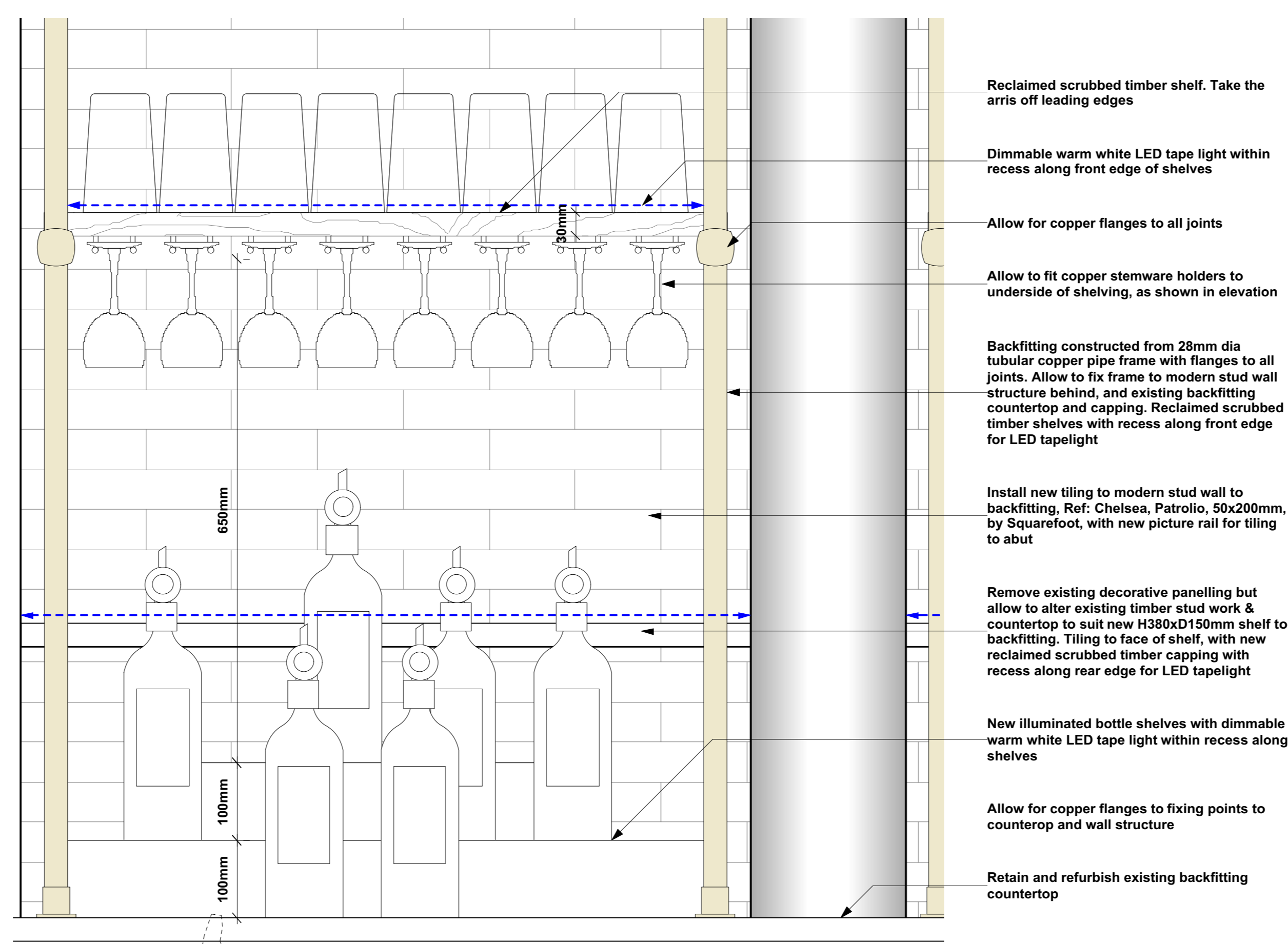
C GF LOWER BAR FRONT



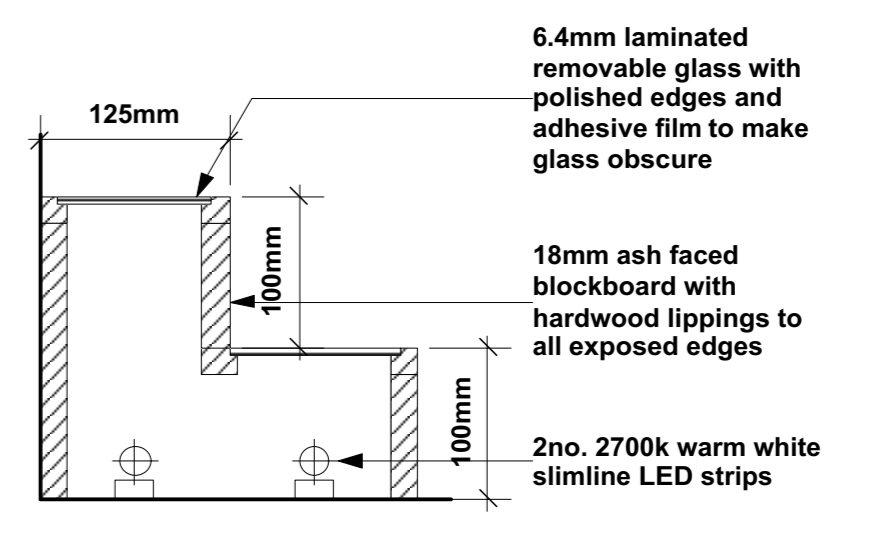
A GF BACKFITTING ELEVATION A
Scale: 1:20



B GF BACKFITTING SECTION
Scale: 1:20



D PIPE SHELVING DETAIL D
Scale: 1:5



F BOTTLE STEP DETAIL
Scale: 1:5

NOTE: Blue dotted line indicates LED tape light locations

CLIENT:	GREENE KING PUB COMPANY	DRAWN BY:	OW
SITE:	ASSEMBLY HOUSE, KENTISH TOWN	SCALE @ A1:	AS STATED
DRAWING TITLE:	PROPOSED BAR & BACKFITTING DETAILS	DATE:	2726-14-03

SAMPSON ASSOCIATES
ARCHITECTS & INTERIOR DESIGNERS
403/8, THE BISCUIT FACTORY,
TOWER BRIDGE BUSINESS COMPLEX, 100 CLEMENTS ROAD, LONDON SE16 4DG.
TEL: +44(0)20 7394 8850 FAX: +44(0)20 7394 8851 E-MAIL: info@sampsonassociates.co.uk