

# CONDOC ISSUE

- NOTES:
1. This drawing is to be read in conjunction with all relevant Architects and Engineers drawings.
  2. All levels quoted are in metres A.O.D.
  3. This drawing to be read in conjunction with the landscape drawing NCA FHM13.LS04

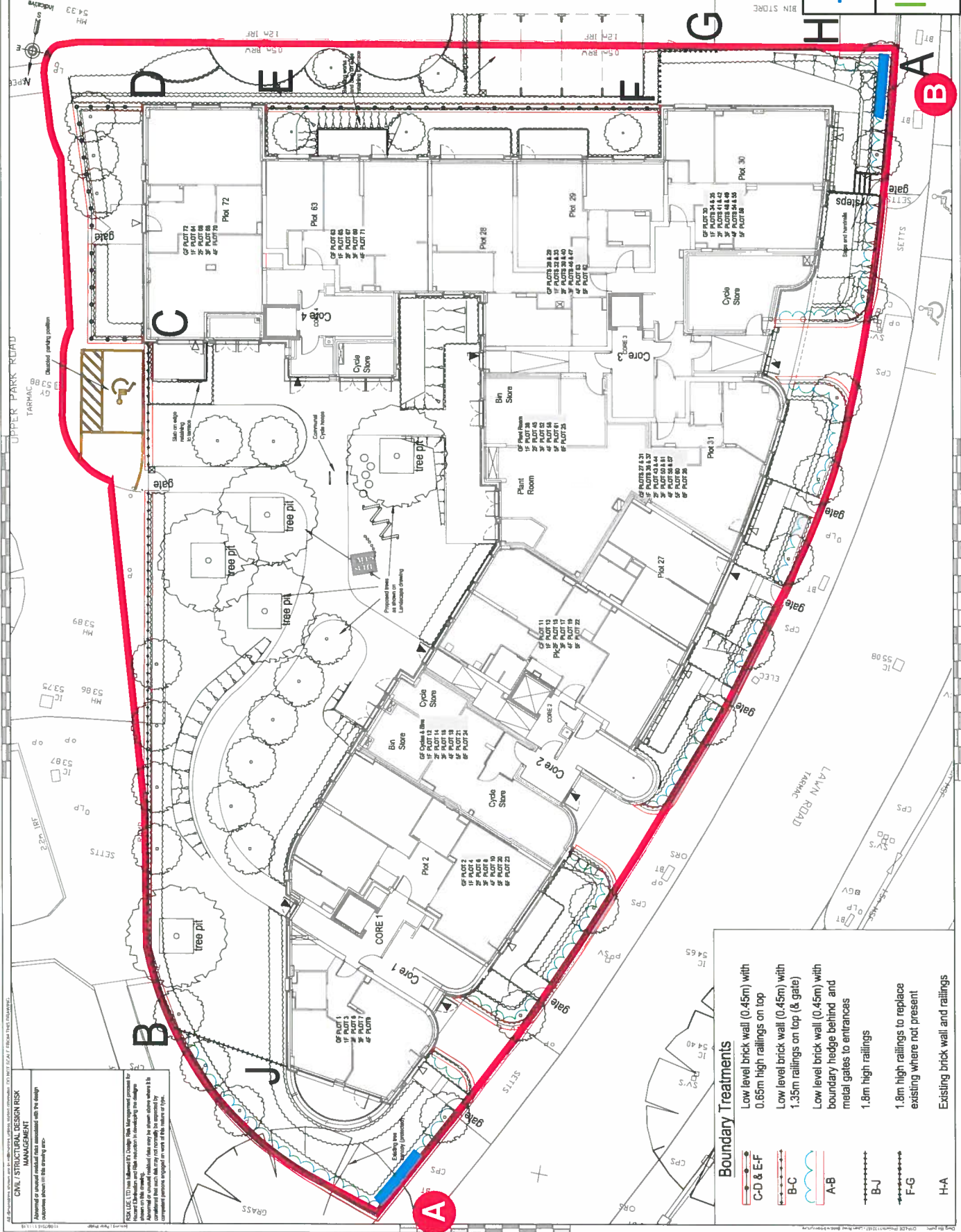
NO	DESCRIPTION	DATE	BY	DATE
1	ISSUED FOR CONDOC ISSUE	11/01/15		
2	Landscaping to be read in conjunction with the landscape drawing NCA FHM13.LS04	11/01/15		
3	Proposed to be read in conjunction with the landscape drawing NCA FHM13.LS04	11/01/15		
4	Proposed to be read in conjunction with the landscape drawing NCA FHM13.LS04	11/01/15		
5	Proposed to be read in conjunction with the landscape drawing NCA FHM13.LS04	11/01/15		
6	Proposed to be read in conjunction with the landscape drawing NCA FHM13.LS04	11/01/15		
7	Proposed to be read in conjunction with the landscape drawing NCA FHM13.LS04	11/01/15		
8	Proposed to be read in conjunction with the landscape drawing NCA FHM13.LS04	11/01/15		
9	Proposed to be read in conjunction with the landscape drawing NCA FHM13.LS04	11/01/15		
10	Proposed to be read in conjunction with the landscape drawing NCA FHM13.LS04	11/01/15		
11	Proposed to be read in conjunction with the landscape drawing NCA FHM13.LS04	11/01/15		
12	Proposed to be read in conjunction with the landscape drawing NCA FHM13.LS04	11/01/15		
13	Proposed to be read in conjunction with the landscape drawing NCA FHM13.LS04	11/01/15		
14	Proposed to be read in conjunction with the landscape drawing NCA FHM13.LS04	11/01/15		
15	Proposed to be read in conjunction with the landscape drawing NCA FHM13.LS04	11/01/15		
16	Proposed to be read in conjunction with the landscape drawing NCA FHM13.LS04	11/01/15		
17	Proposed to be read in conjunction with the landscape drawing NCA FHM13.LS04	11/01/15		
18	Proposed to be read in conjunction with the landscape drawing NCA FHM13.LS04	11/01/15		
19	Proposed to be read in conjunction with the landscape drawing NCA FHM13.LS04	11/01/15		
20	Proposed to be read in conjunction with the landscape drawing NCA FHM13.LS04	11/01/15		
21	Proposed to be read in conjunction with the landscape drawing NCA FHM13.LS04	11/01/15		
22	Proposed to be read in conjunction with the landscape drawing NCA FHM13.LS04	11/01/15		
23	Proposed to be read in conjunction with the landscape drawing NCA FHM13.LS04	11/01/15		
24	Proposed to be read in conjunction with the landscape drawing NCA FHM13.LS04	11/01/15		
25	Proposed to be read in conjunction with the landscape drawing NCA FHM13.LS04	11/01/15		
26	Proposed to be read in conjunction with the landscape drawing NCA FHM13.LS04	11/01/15		
27	Proposed to be read in conjunction with the landscape drawing NCA FHM13.LS04	11/01/15		
28	Proposed to be read in conjunction with the landscape drawing NCA FHM13.LS04	11/01/15		
29	Proposed to be read in conjunction with the landscape drawing NCA FHM13.LS04	11/01/15		
30	Proposed to be read in conjunction with the landscape drawing NCA FHM13.LS04	11/01/15		
31	Proposed to be read in conjunction with the landscape drawing NCA FHM13.LS04	11/01/15		
32	Proposed to be read in conjunction with the landscape drawing NCA FHM13.LS04	11/01/15		
33	Proposed to be read in conjunction with the landscape drawing NCA FHM13.LS04	11/01/15		
34	Proposed to be read in conjunction with the landscape drawing NCA FHM13.LS04	11/01/15		
35	Proposed to be read in conjunction with the landscape drawing NCA FHM13.LS04	11/01/15		
36	Proposed to be read in conjunction with the landscape drawing NCA FHM13.LS04	11/01/15		
37	Proposed to be read in conjunction with the landscape drawing NCA FHM13.LS04	11/01/15		
38	Proposed to be read in conjunction with the landscape drawing NCA FHM13.LS04	11/01/15		
39	Proposed to be read in conjunction with the landscape drawing NCA FHM13.LS04	11/01/15		
40	Proposed to be read in conjunction with the landscape drawing NCA FHM13.LS04	11/01/15		
41	Proposed to be read in conjunction with the landscape drawing NCA FHM13.LS04	11/01/15		
42	Proposed to be read in conjunction with the landscape drawing NCA FHM13.LS04	11/01/15		
43	Proposed to be read in conjunction with the landscape drawing NCA FHM13.LS04	11/01/15		
44	Proposed to be read in conjunction with the landscape drawing NCA FHM13.LS04	11/01/15		
45	Proposed to be read in conjunction with the landscape drawing NCA FHM13.LS04	11/01/15		
46	Proposed to be read in conjunction with the landscape drawing NCA FHM13.LS04	11/01/15		
47	Proposed to be read in conjunction with the landscape drawing NCA FHM13.LS04	11/01/15		
48	Proposed to be read in conjunction with the landscape drawing NCA FHM13.LS04	11/01/15		
49	Proposed to be read in conjunction with the landscape drawing NCA FHM13.LS04	11/01/15		
50	Proposed to be read in conjunction with the landscape drawing NCA FHM13.LS04	11/01/15		

**RSK**  
LAND DEVELOPMENT ENGINEERING LTD  
14, Grosvenor Road, London, W1A 3AB  
Tel: +44 (0) 20 7492 2000  
Fax: +44 (0) 20 7492 2001  
Email: info@rsk.co.uk  
www.rsk.co.uk

**Fairview**  
Landscape Architecture  
14, Grosvenor Road, London, W1A 3AB  
Tel: +44 (0) 20 7492 2000  
Fax: +44 (0) 20 7492 2001  
Email: info@fairview.co.uk  
www.fairview.co.uk

New Adverts  
marked  
with a blue line

**limegreen**  
design



**Boundary Treatments**

- Low level brick wall (0.45m) with 0.65m high railings on top
- Low level brick wall (0.45m) with 1.35m railings on top (& gate)
- Low level brick wall (0.45m) with boundary hedge behind and metal gates to entrances
- 1.8m high railings
- 1.8m high railings to replace existing where not present
- Existing brick wall and railings

**Legend:**

- C-D & E-F
- B-C
- A-B
- B-J
- F-G
- H-A

**CIVIL / STRUCTURAL DESIGN RISK MANAGEMENT**

Approved as shown. All structural design and construction shall be in accordance with the design and construction details in this drawing.

RSK LDC, LTD has been issued a Design Risk Management Certificate. This certificate allows RSK LDC, LTD to provide design services to clients who are not members of the Institution of Structural Engineers (IStructE). RSK LDC, LTD is not a member of IStructE. RSK LDC, LTD is not a member of the Institution of Civil Engineers (ICE). RSK LDC, LTD is not a member of the Institution of Mechanical Engineers (IMechE). RSK LDC, LTD is not a member of the Institution of Chemical Engineers (IChemE). RSK LDC, LTD is not a member of the Institution of Mining Engineers (IMinE). RSK LDC, LTD is not a member of the Institution of Electrical Engineers (IEE). RSK LDC, LTD is not a member of the Institution of Surveyors (RICS). RSK LDC, LTD is not a member of the Institution of Chartered Accountants (ICAEW). RSK LDC, LTD is not a member of the Institution of Financial Accountants (IFAC). RSK LDC, LTD is not a member of the Institution of Management Accountants (IMA). RSK LDC, LTD is not a member of the Institution of Estate Agents (EA). RSK LDC, LTD is not a member of the Institution of Surveyors (RICS). RSK LDC, LTD is not a member of the Institution of Chartered Accountants (ICAEW). RSK LDC, LTD is not a member of the Institution of Financial Accountants (IFAC). RSK LDC, LTD is not a member of the Institution of Management Accountants (IMA). RSK LDC, LTD is not a member of the Institution of Estate Agents (EA).



Height of logo  
951mm

Height of letters  
922mm

Height of letters  
386mm

Height of letters  
271.7mm

Height of logo  
976mm

**A**



Height of logo  
791mm

Height of letters  
817mm

Height of letters  
240mm

Height of logo  
813mm

**B**

Thirty2 - Lawn Road hoarding ads	Material: <b>Mesh PVC</b>
Size: Banner A (w) 5.0 m x (h) 15.4 m	Colours deep red, grey, white +4 colour images
Size: Banner B (w) 5 m x (h) 12.8 m	
<b>limegreen</b> design	

Fairview Ltd Fairview Ltd Fairview Ltd

thirty2

NOW SELLING

FOR MORE INFORMATION  
PLEASE CALL  
0808 271 3698

PRESTIGE  
Fairview

LAWN ROAD

A mix of 1 and 2 bedroom apartments available on a shared ownership basis

For your interest today  
0800 9749  
www.fairview.co.uk



thirty2

NOW SELLING

FOR MORE INFORMATION PLEASE CALL 0808 271 3698

PRESTIGE  
Felix's View