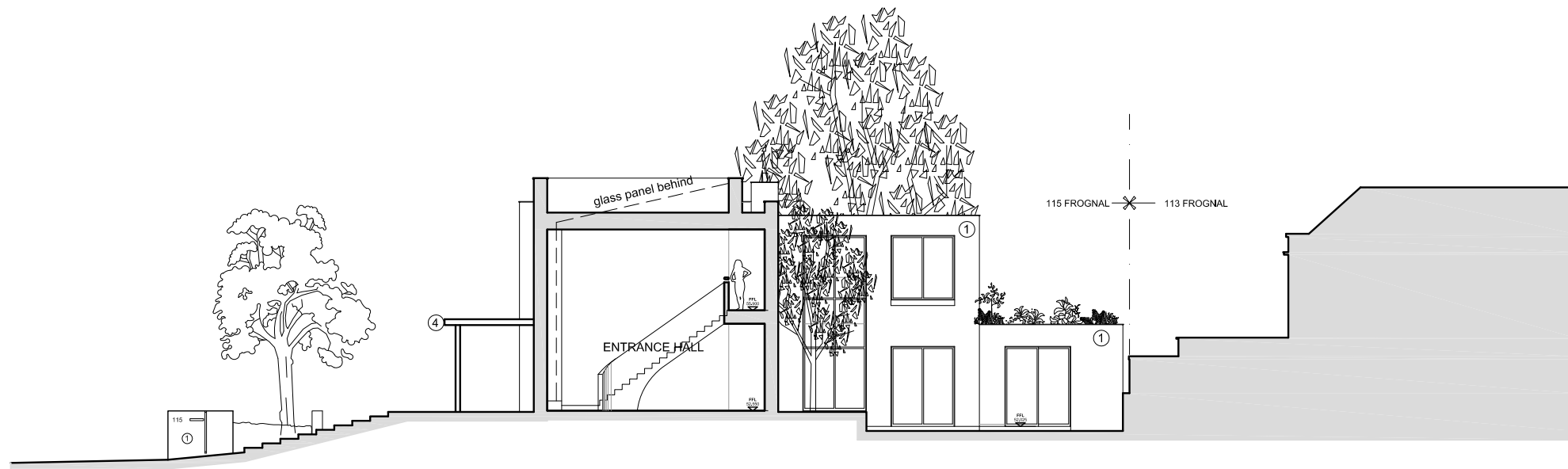
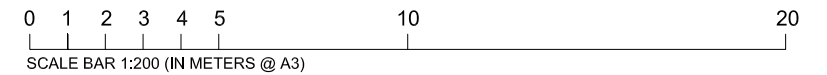


- ① FACING BRICK
- ② STONE
- ③ ZINC
- ④ METAL
- ⑤ GLASS PANEL
- ⑥ TIMBER

WEST ELEV. / SECTION B-B 1
 SCALE 1:200 @ A3 FRG-P-302



SECTION A-A 2
 SCALE 1:200 @ A3 FRG-P-302



general notes
THIS DRAWING IS COPYRIGHT OF STUDIO MARK RUTHVEN. THIS DRAWING MUST BE READ IN CONJUNCTION WITH THE DESIGNER'S RISK ASSESSMENT, SPECIFICATION AND ALL OTHER RELEVANT DOCUMENTATION AND DRAWINGS. STUDIO MARK RUTHVEN ACCEPTS NO LIABILITY FOR ANY EXPENSE, LOSS OR DAMAGE OF WHATSOEVER NATURE AND HOWEVER ARISING FROM ANY VARIATION MADE TO THIS DRAWING OR IN THE EXECUTION OF THE WORK TO WHICH IT RELATES WHICH HAS NOT BEEN REFERRED TO THEM AND THEIR APPROVAL OBTAINED.
FOR THE PURPOSE OF CONSTRUCTION DO NOT SCALE FROM THIS DRAWING OR THE COMPUTER DIGITAL DATA. ONLY FIGURED DIMENSIONS ARE TO BE USED.
IF IN DOUBT ASK.
purpose of issue
PLANNING

notes

project name		115 FROGNAL LONDON NW3		StudioMarkRuthven architecture	
drawing title		PROPOSED WEST ELEV./SECTION B-B AND SECTION A-A		92 Prince of Wales Road, London, NW5 2NE 11 & 13 Patwell Street, Bruton, BA10 0EQ T 020 7485 0050	
rev	notes	date	by	checked	scale
					1:200 @ A3
					date 30.09.16
					project ref. FRG
					drawing no. FRG-P-302
					revision -
* for construction do not scale from this drawing.		* check all dimensions on site.			
drawn by PW		checked MR			