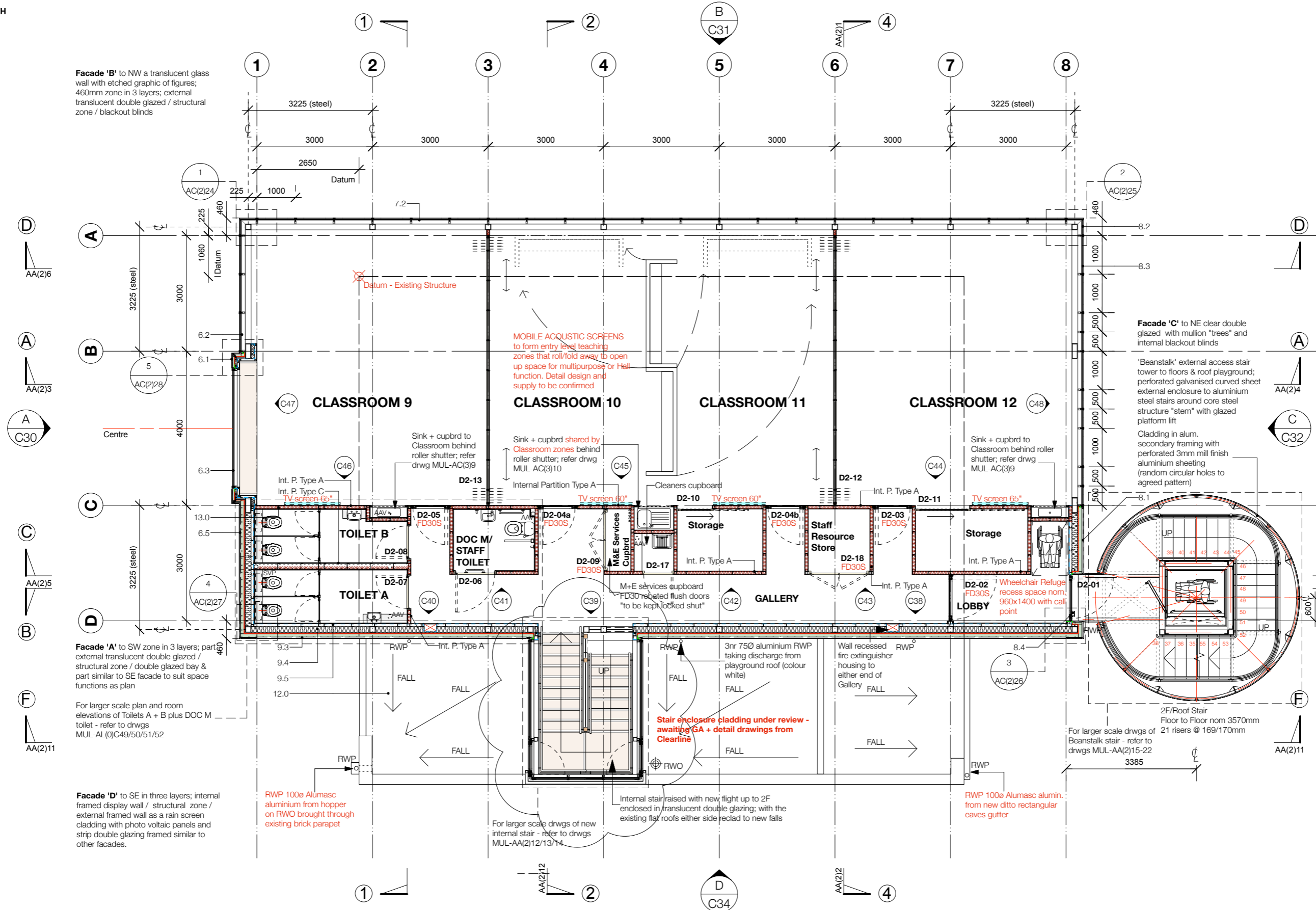




Facade 'B' to NW a translucent glass wall with etched graphic of figures; 460mm zone in 3 layers; external translucent double glazed / structural zone / blackout blinds



Facade 'A' to SW zone in 3 layers; part external translucent double glazed / structural zone / double glazed bay & part similar to SE facade to suit space functions as plan

For larger scale plan and room elevations of Toilets A + B plus DOC M toilet - refer to drwgs MUL-AL(0)C49/50/51/52

Facade 'D' to SE in three layers; internal framed display wall / structural zone / external framed wall as a rain screen cladding with photo voltaic panels and strip double glazing framed similar to other facades.

RWP 100 Aluasc aluminium from hopper on RWO brought through existing brick parapet

For larger scale drwgs of new internal stair - refer to drwgs MUL-AA(2)12/13/14

Internal stair raised with new flight up to 2F enclosed in translucent double glazing; with the existing flat roofs either side reclad to new falls

RWP 100 Aluasc alumin. from new ditto rectangular eaves gutter

For larger scale drwgs of Beanstalk stair - refer to drwgs MUL-AA(2)15-22

Internal Partition Type - A
 - 12.5mm Gyproc Soundbloc
 - 70mm Gypframe 50 'C' metal studs
 - 65mm Isover Acoustic Partition Roll insulation between studs
 - 12.5mm Gyproc Soundbloc

Internal Partition Type - C
 - 12.5mm Moisture resistant board
 - 142mm Gypframe 50 'C' metal studs
 - 65mm Isover Acoustic Partition Roll insulation between studs
 - 12.5mm Moisture resistant board

THIS DRAWING IS COPYRIGHT.
 DIMENSIONS SHOULD NOT BE SCALED FROM THE DRAWINGS FIGURED DIMENSIONS TO BE USED & CHECKED ON SITE PRIOR TO START OF ANY WORK

REVISIONS	Date	Ini	Chk'd
A Update for construction; disabled toilet; storage cupboards	19-10-15	NB	
B External glazing profiles + depth increased to 135mm zone; Energain boards to walls of Hall + cupbrds; Beanstalk updated	22-10-15	NB	
C Notes; grid	23-10-15	NB	
D Doors D2-02/03/05/09; Acoustic doors; widths of passages; internal partitions; notes generally; external wall thickness/insulation; internal stair; toilet waste; beanstalk	11-11-15	NB	
E Wheelchair Refuge	11-11-15	AB	
F Staff Resource Store; Cleaners Cupbrd; sinks to classrooms; Beanstalk cladding	25-11-15	NB	
G External stair developed in detail to SEs drwgs; remove internal S.G. doors; remove Energain; glazing + cladding	07-01-16	NB/AB	
H Classroom sinks; Elev D wall insulation; toilets	16-02-16	NB	
J Glazing + cladding to NET details	03-03-16	NB	
K Beanstalk stair cladding + width	10-03-16	NB	
L Partitions+doors to Classrooms; fire extinguishers; columns to stair	24-05-16	NB	
M Fire door D2-02; internal stairs; remove partition Type B; beanstalk; SP/AAV locations; Elev A+D 15mm void for truss plates	12-07-16	NB	

Job: Mulberry - Proposed Alterations
Client: The Mulberry House School
Title: Second Floor Plan : Proposed
 Scale: 1:100 @ A3
 Drawing No: MUL-AL(0)C18
 Rev: M
 Drawn by: NB/AB
 Date: 12/07/2016

For 1:50 scale assembly drawings of 2F Proposed plan - refer to drwgs MUL-AL(0)C35 + C36

Second Floor Plan : Proposed New Accommodation

Scale 1:100 For key notes refer drawing MUL-AL(0)C01

