



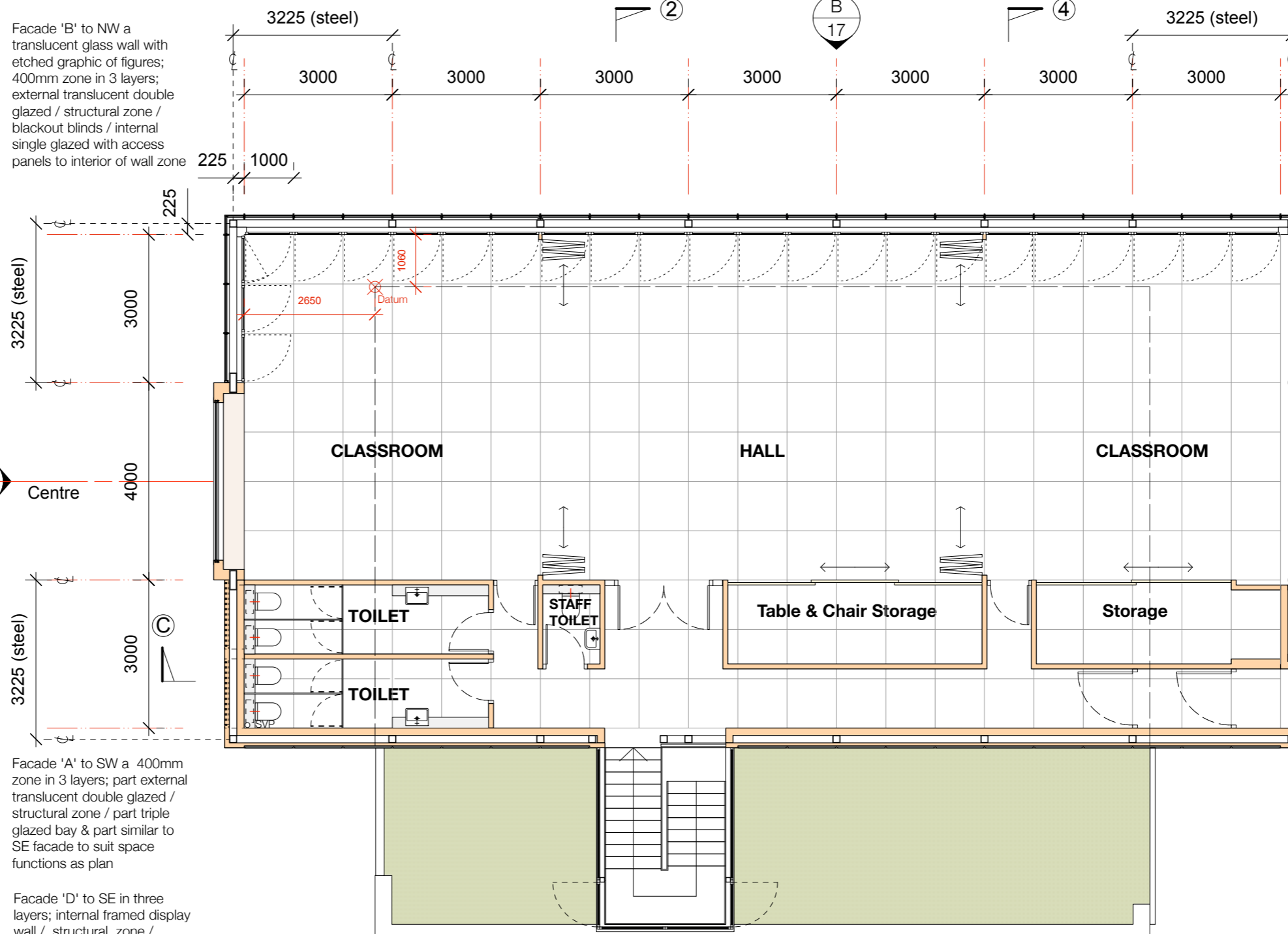
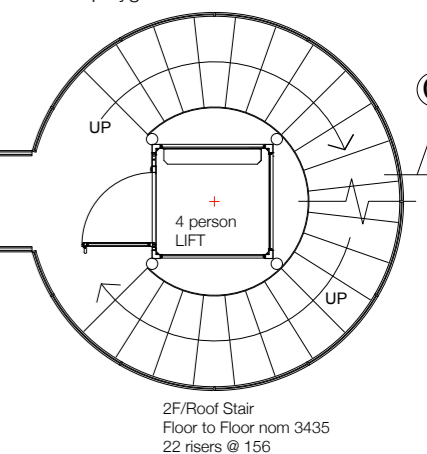
THIS DRAWING IS COPYRIGHT:
 DIMENSIONS SHOULD NOT BE SCALED FROM THE
 DRAWINGS FIGURED DIMENSIONS TO BE USED &
 CHECKED ON SITE PRIOR TO START OF ANY WORK

REVISIONS	Date	Ini
A	13-8-15	AB/NB
Column location; facades A+C modified; c/l dimensions; internal stair enclosure; external stair		
B	24-8-15	AB/NB
Update internal + external stair risers; internal windows; lift structure; note for PA		
C	27-8-15	AB/NB
Lift + Beanstalk; update steel to SE info; bay window		
D	2-9-15	AB/NB
Update steel to SE info; graphics; toilet SVP		

Facade 'C' to NE clear double glazed with "trees" and internal blackout blinds

'Beanstalk' stair tower; translucent polycarbonate curved sheet external enclosure to galvanised steel spiral stairs around core steel structure "stem" with glazed platform lift

External principal access to floors & roof playground.



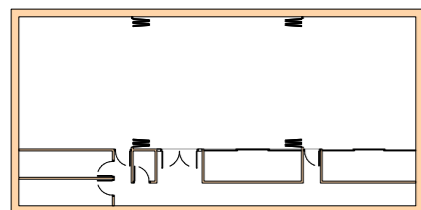
Facade 'B' to NW a translucent glass wall with etched graphic of figures; 400mm zone in 3 layers; external translucent double glazed / structural zone / blackout blinds / internal single glazed with access panels to interior of wall zone

Facade 'A' to SW a 400mm zone in 3 layers; part external translucent double glazed / structural zone / part triple glazed bay & part similar to SE facade to suit space functions as plan

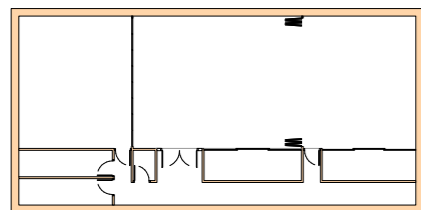
Facade 'D' to SE in three layers; internal framed display wall / structural zone / external framed wall similar to other facades with photo voltaic panels and strip double glazing

Internal stair raised with new flight up to 2F enclosed in translucent double glazing; with the existing flat roofs either side reclad to form meadow flower green roofs

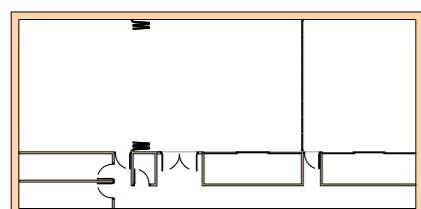
SPACE ARRANGEMENTS



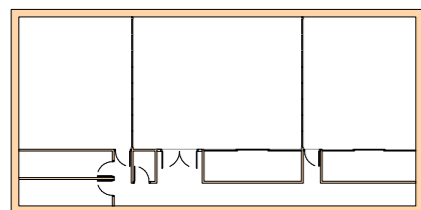
Full open large Hall



SW Classroom with two thirds Hall



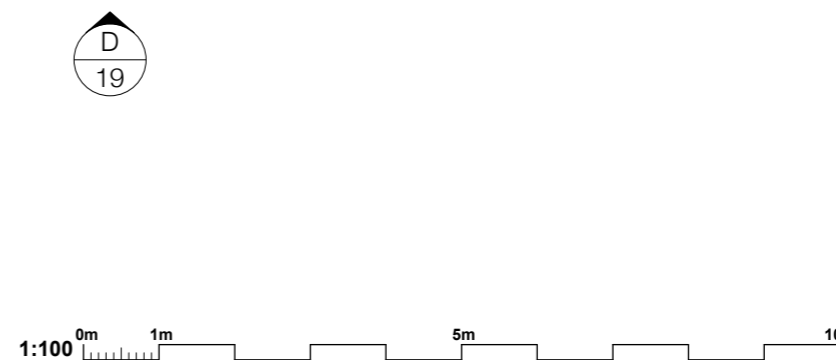
NE Classroom with two thirds Hall



Two Classrooms with small Hall

Second Floor Plan : Proposed New Accommodation

Scale 1:100



Job: Mulberry - Proposed Alterations
Client: The Mulberry House School
Title: Second Floor Plan : Proposed

Scale: 1:100 @ A3
 Drawing No: **MUL-AL(0)11**
 Rev: **D**
 Drawn by: NB/AB
 Date: 2/9/2015